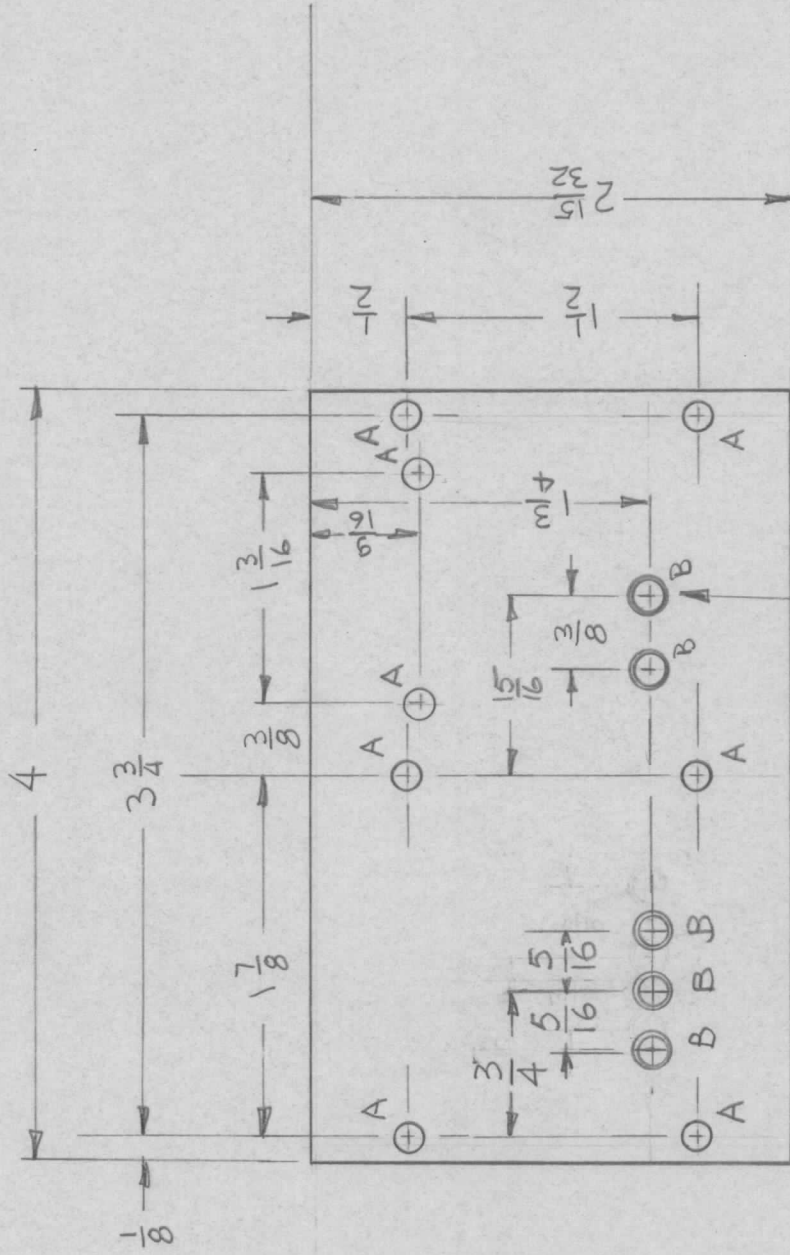


REVISIONS

APPLICATION

QTY	MODEL USED ON	ASS'Y NO.	LTR	DESCRIPTION	DATE	E.M.N.NO	DRAFT	CHKD	APPD
1	AX5176	AX5180	Ø	ORIGINAL RELEASE	11/30/73		DV		
			A	DIM 3/4 WAS 15/16 & 5/16 WAS 3/8	1-3-75	21194	GDL	A	A



CHAMFER THIS SIDE ONLY  
ON ALL "B" HOLES.

A ~ 3/4 DIA 8 REQ'D  
B ~ .159 DIA 5 REQ'D.

REQ'D	ITEM	PART NUMBER	DESCRIPTION	SYM.
LIST OF MATERIAL				
THE TECHNICAL MATERIEL CORP. MAMARONECK, NEW YORK				
PLATE, FEEDTHRU				
UNLESS OTHERWISE SPECIFIED DIMENSIONS ARE IN INCHES AND INCLUDE CHEMICALLY APPLIED OR PLATED FINISHES				
DECIMALS	FRACTIONS			
.X ± .05	TOLS. 1/64			
.XX ± .01	ANGLES 0°-30'			
.XXX ± .005				
MATERIAL .061				
ALUM 5052 H32				
FINISH 5404 VEL IRID				
FINAL APPROVAL	DATE	DATE		
MECH. DES.	DATE	DATE		
ELECT. DES.	DATE	DATE		
CHECKED	DATE	DATE		
DRAWN	DATE	DATE		

NOTICE TO PERSONS RECEIVING THIS DRAWING		SIZE	CODE IDENT. NO.	DWG NO.	ISSUE
THE TECHNICAL MATERIEL CORPORATION claims proprietary right in the material disclosed hereon. This drawing is issued in confidence for engineering information only and may not be reproduced or used to manufacture anything shown hereon without permission from THE TECHNICAL MATERIEL CORPORATION to the user. This drawing is loaned for mutual assistance and is subject to recall at any time.		A	82679	MSG474	A
SCALE	SHEET	OF			