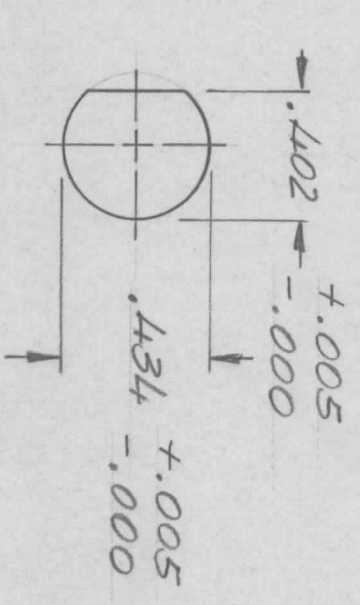
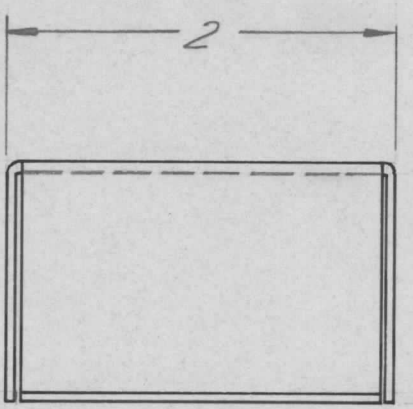
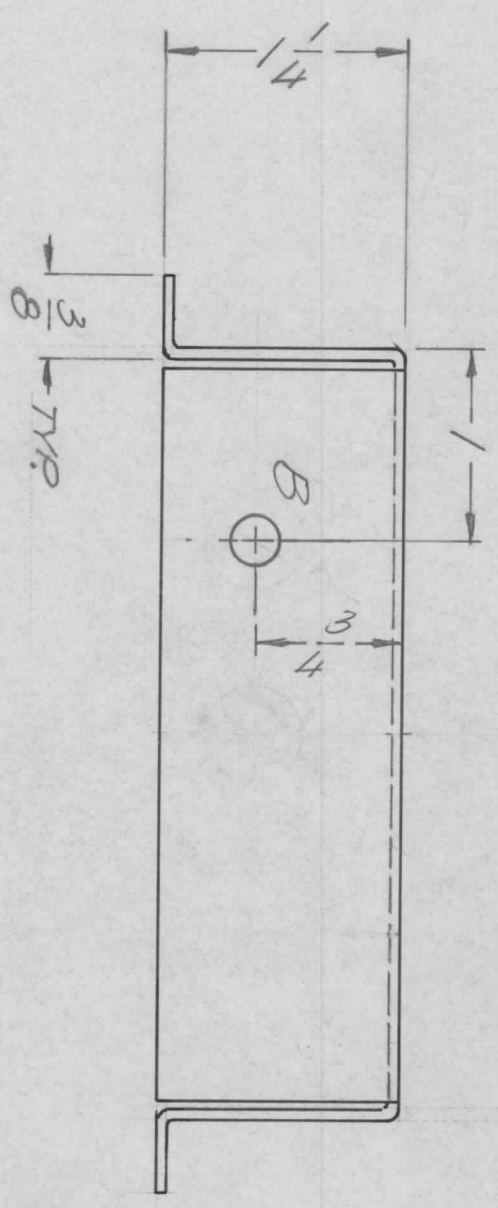
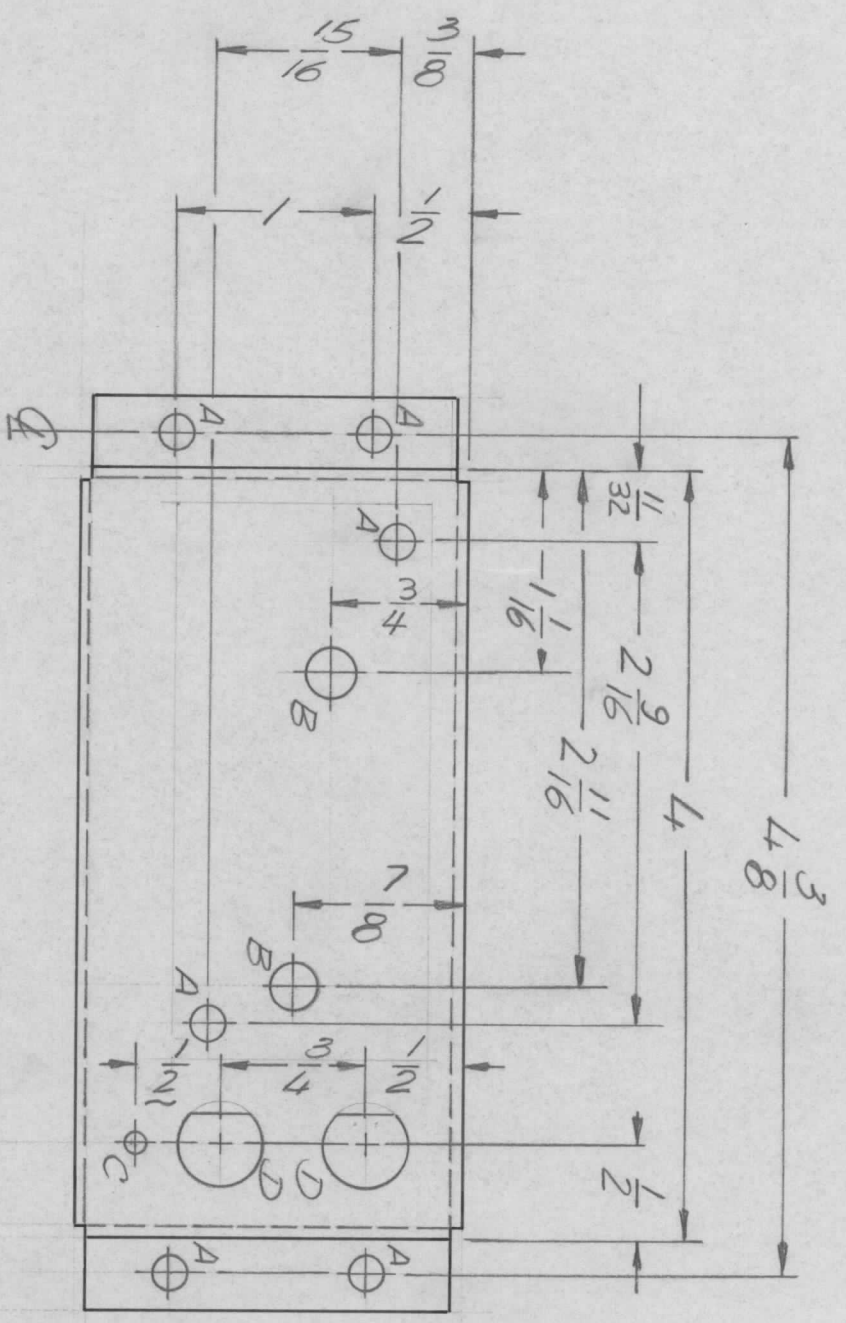


REVISIONS							
EM.N. NO.	DRAFT	CHKD	ZONE	LTR	DESCRIPTION	DATE	APPROVED
	A.			Ø	ORIGINAL RELEASE FOR PROD	3/23/73	



D DETAIL

HOLE DESCRIPTION REQ.

- A - 11/64 DIA - 6
- B - 1/4 DIA - 3
- C - 7/64 DIA. - 1
- D - SEE DETAIL - 2

REF. LD 2542

REQ'D ITEM	PART NUMBER	DESCRIPTION	SYM.
F.B.		THE TECHNICAL MATERIEL CORP. MAMARONECK, NEW YORK	

QTY / UNIT	MODEL USED ON	ASS'Y NO.
1	KIT 375	AX746
APPLICATION		
CODE		

NOTICE TO PERSONS RECEIVING THIS DRAWING
 THE TECHNICAL MATERIEL CORPORATION claims proprietary right in the material disclosed hereon. This drawing is issued in confidence for engineering information only and may not be reproduced or used to manufacture anything shown hereon without permission from THE TECHNICAL MATERIEL CORPORATION to the user. This drawing is loaned for mutual assistance and is subject to recall at any time.

DECIMALS	TOLS.	FRACTIONS	ANGLES	DATE
.X ± .05		1/64		3/19/73
.XX ± .01				3/27/73
.XXX ± .005		0° .30'		

MATERIAL .064 ALUMI

5052 H32

FINISH SL404

YEL. IRIDITE

SIZE	CODE IDENT. NO.	DWG NO.	ISSUE
B	82679	MIS 6458	Ø

17MMH2 SWITCHING BOX

SCALE 1:1