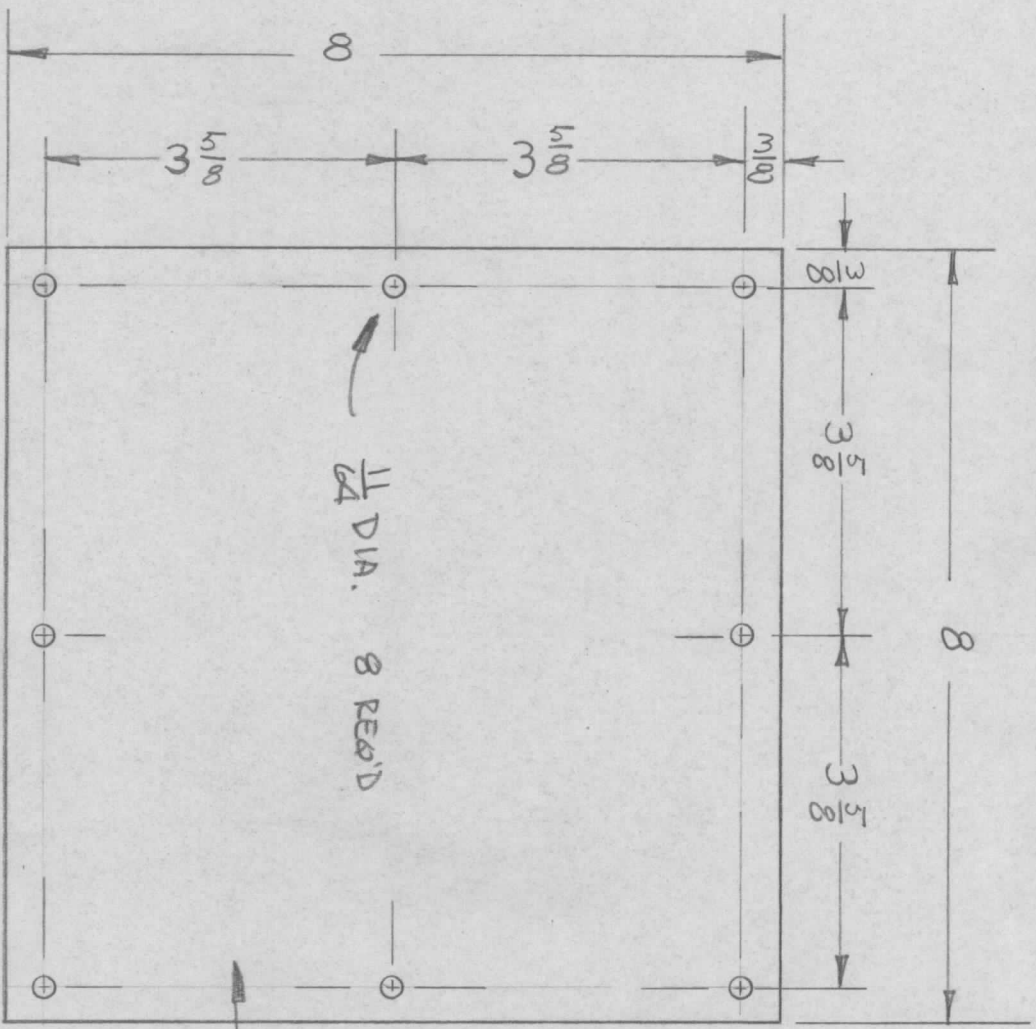


| REVISIONS | | | | DATE | APPROVED |
|-----------|-------|------|------|------|-----------------------------|
| EM.N. NO. | DRAFT | CHKD | ZONE | LTR | DESCRIPTION |
| | CL | | | Ø | ORIG RELEASE FOR PRODUCTION |
| | | | | | 2-19-73 |



MARK TMC PART NUMBER
1/8 HIGH GOTHIC WITH LATEST
REVISION LETTER

5 ROUNDS ALL CORNERS

FINISH:
S404 YEL IRID.
S114 ZINC CHROMATE
S520 BLUE GREY TEXTURED VINYL
OR PER CUSTOMERS SPECS.

| | | | | |
|---------------|---|-------------|-----------|--------|
| QTY / UNIT | 1 | HEFTA-5KJ | ASS'Y NO. | AX5148 |
| MODEL USED ON | | APPLICATION | | |
| CODE | | | | |

NOTICE TO PERSONS RECEIVING THIS DRAWING
THE TECHNICAL MATERIEL CORPORATION claims proprietary right in the material disclosed hereon. This drawing is issued in confidence for engineering information only and may not be reproduced or used to manufacture anything shown hereon without permission from THE TECHNICAL MATERIEL CORPORATION to the user. This drawing is loaned for mutual assistance and is subject to recall at any time.

| | | | |
|-----------|-------------|-----------|----------|
| DECIMALS | .X ± .05 | FRACTIONS | 1/64 |
| | .XX ± .01 | ANGLES | 0° - 30' |
| | .XXX ± .005 | | |
| MATERIAL | .064 ALUH | | |
| FINISH | 5052-H32 | | |
| SEE NOTES | | | |

| REQ'D ITEM | PART NUMBER | DATE |
|------------|-------------|-----------|
| | | 8 FEB 73 |
| | | 8 FEB 73 |
| | | 10 JAN 73 |

| LIST OF MATERIAL | | | | SYM. |
|------------------|-----------------|--|-------|------|
| REQ'D ITEM | PART NUMBER | DESCRIPTION | DATE | |
| | | THE TECHNICAL MATERIEL CORP. MAMARONECK, NEW YORK | | |
| | | COVER, COUPLER | | |
| SIZE | CODE IDENT. NO. | DWG NO. | ISSUE | |
| B | 82679 | MS6432 | Ø | |
| SCALE | | | SHEET | OF |