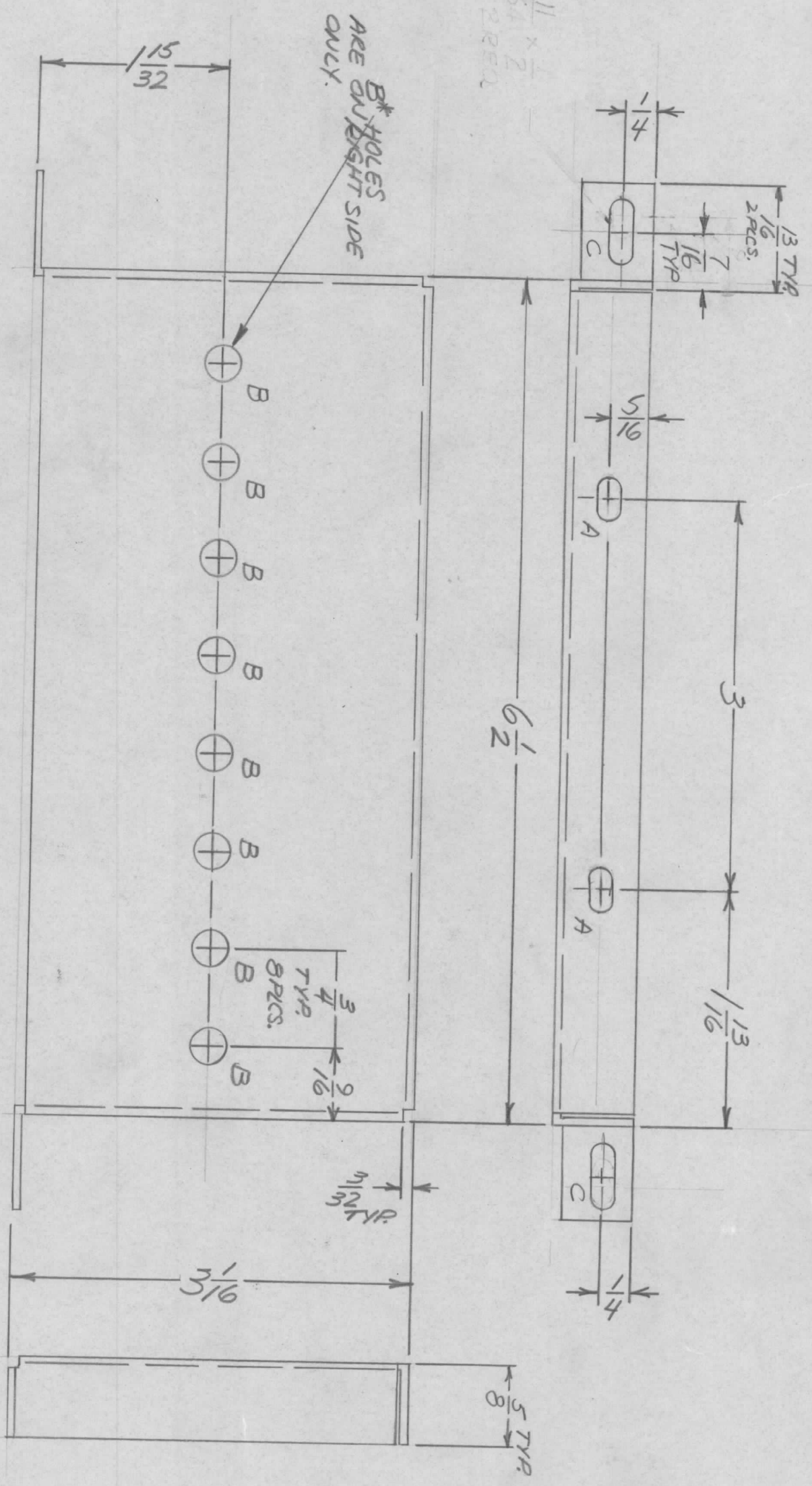


A HOLES - 11/64 X 11/32 SLOT - 2 REQ.  
 \* B HOLES - 1/4 DIA - 8 REQ.  
 C HOLES 11/64 X 1/2 SLOT 2 REQ.



EM.N. NO.	DRAFT	CHKD	ZONE	LTR	DESCRIPTION	DATE	APPROVED
21341	DV	gdl		A	ORIGINAL RELEASE FOR PRODUCTION	10/26/73	
				A	2" C" HOLES RELOCATED	1-26-76	OK

MSG419-1	AS SHOWN	LEFT SIDE
MSG419-2	MIRROR IMAGE	RIGHT SIDE

1 EACH	TM 125	MODEL USED ON	ASSY NO.
APPLICATION		CODE	

DECIMALS	FRACTIONS
X ± .05	1/64
.XX ± .01	ANGLES
.XXX ± .005	0° - 30°

UNLESS OTHERWISE SPECIFIED DIMENSIONS ARE IN INCHES AND INCLUDE CHEMICALLY APPLIED OR PLATED FINISHES	
FINAL APPROVAL	DATE
MECH. DES.	DATE
ELECT. DES.	DATE
CHECKED	DATE
DRAWN	DATE

REQ'D ITEM	PART NUMBER	DESCRIPTION	SYM.
LIST OF MATERIAL			
THE TECHNICAL MATERIEL CORP.			
MAMARONECK, NEW YORK			
SIZE	CODE IDENT. NO.	DWG NO.	ISSUE
B	82679	MSG419	A

NOTICE TO PERSONS RECEIVING THIS DRAWING  
 THE TECHNICAL MATERIEL CORPORATION claims proprietary right in the material disclosed hereon. This drawing is issued in confidence for engineering information only and may not be reproduced or used to manufacture anything shown hereon without permission from THE TECHNICAL MATERIEL CORPORATION to the user. This drawing is loaned for mutual assistance and is subject to recall at any time.

MATERIAL  
 .051 ALUM.  
 S052-H32  
 FINISH  
 S404 YEL. IRONE

0. POSE  
 ALPETACCIA

COVER, PC BOARDS  
 SCALE 1/16" = 1"