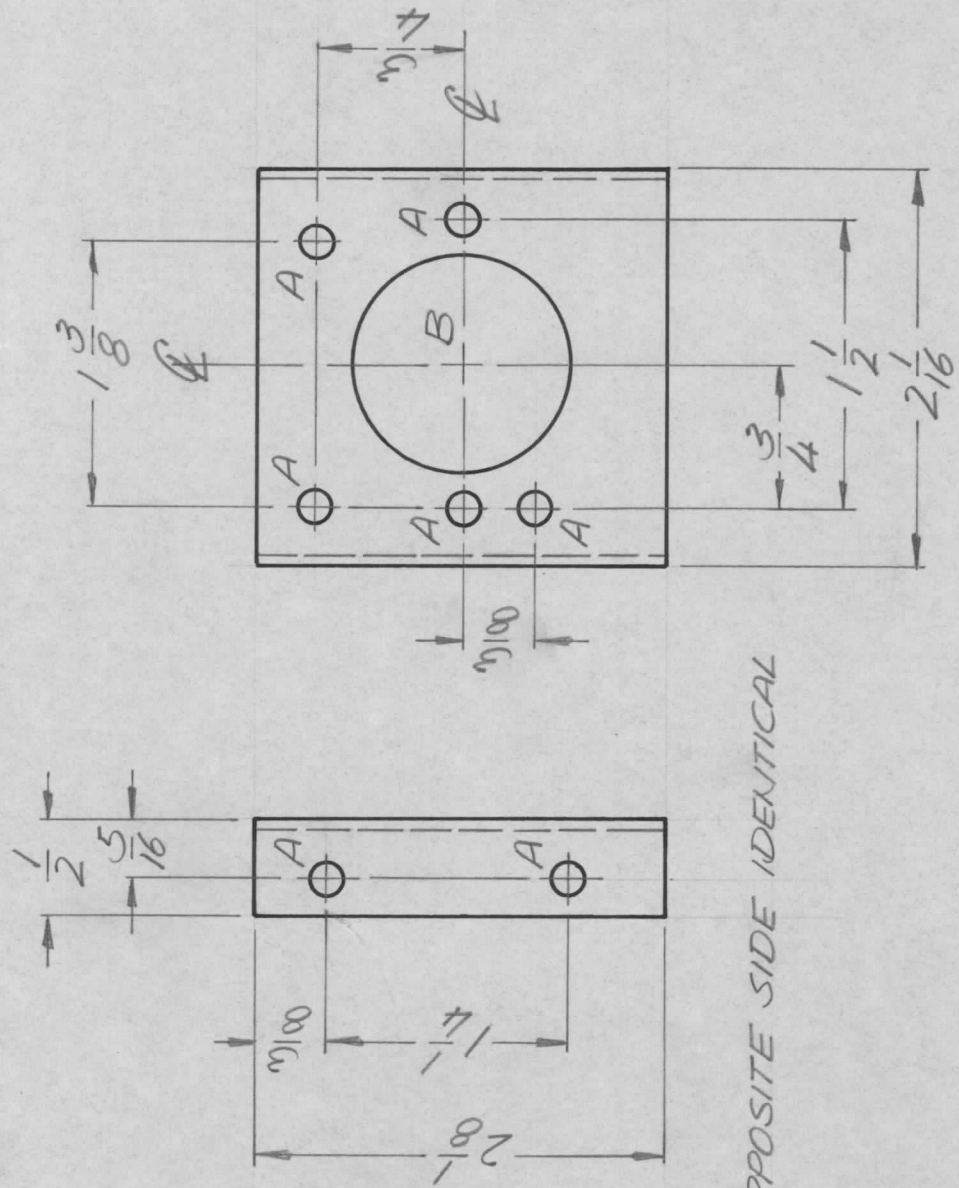


REVISIONS

APPLICATION

| | | | | | | | | | |
|-----|---------------|-----------|-----|------------------|----------|----------|-------|------|------|
| QTY | MODEL USED ON | ASS'Y NO. | LTR | DESCRIPTION | DATE | E.M.N.NO | DRAFT | CHKD | APPD |
| 1 | RSU-1 | | Ø | ORIGINAL RELEASE | 11-21-72 | EJ | | | |



OPPOSITE SIDE IDENTICAL

HOLE DESCRIPTION REQ.

- A — 11/64 DIA. — 9
- B — 1/8 DIA — 1

REF. LD 2524

| | | | | | |
|-------------------------------------------------------------------------------------------------------|-----------------------|------------------|--------------|------------------------------------------------------|------|
| UNLESS OTHERWISE SPECIFIED DIMENSIONS ARE IN INCHES AND INCLUDE CHEMICALLY APPLIED OR PLATED FINISHES | | REQ'D ITEM | PART NUMBER | DESCRIPTION | SYM. |
| DECIMALS .X ± .05 .XX ± .01 .XXX ± .005 | | O. POSE | | | |
| FRACTIONS 1/64 | | LIST OF MATERIAL | | | |
| TOLS. ANGLES ° .30' | | FINAL APPROVAL | DATE | THE TECHNICAL MATERIEL CORP. MAMARONECK, NEW YORK | |
| MATERIAL 5052 H32 .064 ALUM. | | MECH. DES. ALP. | DATE | BRKT. SOCKET MTG STANDARD | |
| FINISH S404 YELLOW IRIDITE | | ELECT. DES. | DATE | | |
| | | CHECKED | DATE | | |
| | | DRAWN GE | DATE 9/27/72 | | |
| SIZE A | CODE IDENT. NO. 82679 | DWG NO. MS6394 | | ISSUE Ø | |
| SCALE 1:1 | | SHEET | | OF | |

NOTICE TO PERSONS RECEIVING THIS DRAWING
THE TECHNICAL MATERIEL CORPORATION claims proprietary right in the material disclosed hereon. This drawing is issued in confidence for engineering information only and may not be reproduced or used to manufacture anything shown hereon without permission from THE TECHNICAL MATERIEL CORPORATION to the user. This drawing is loaned for mutual assistance and is subject to recall at any time.