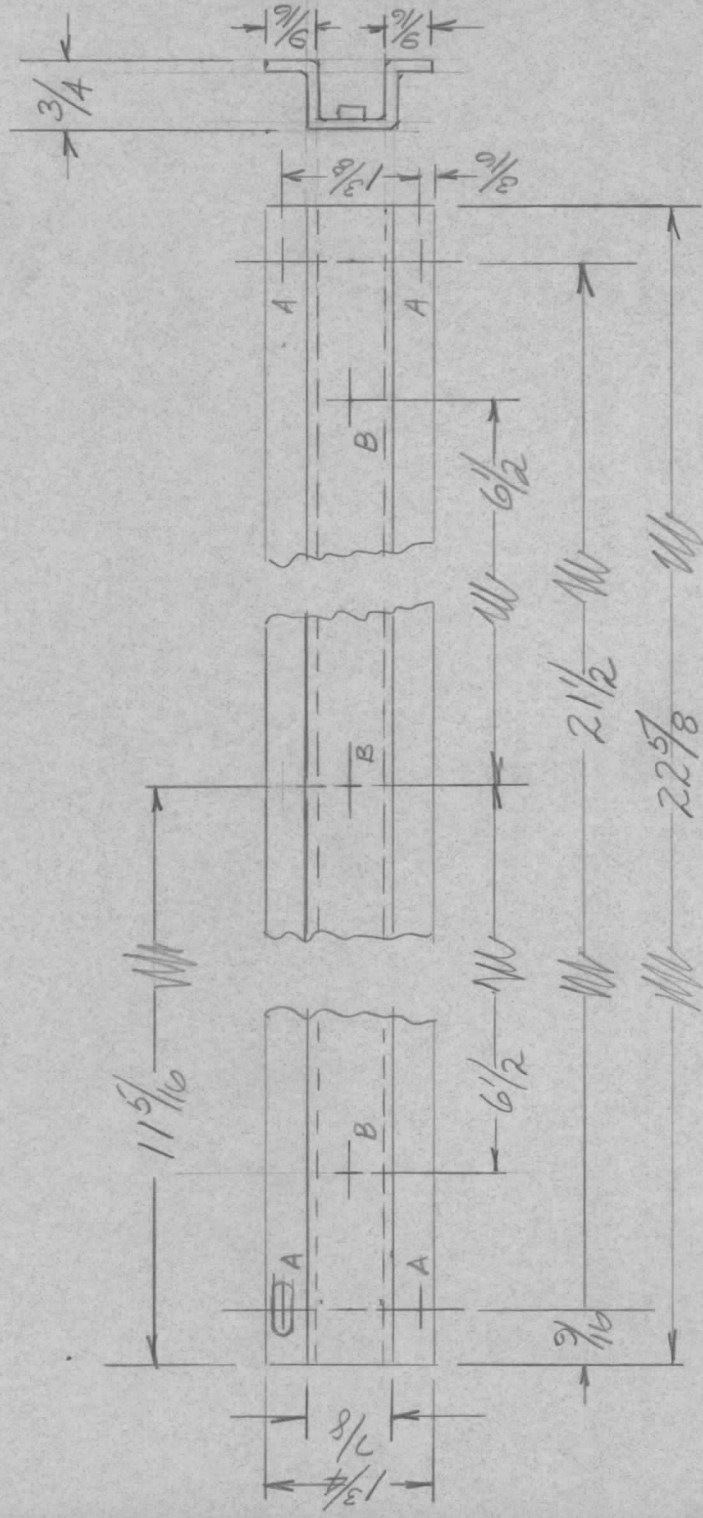


APPLICATION

REVISIONS

QTY	MODEL USED ON	ASSY NO.	LTR	DESCRIPTION	DATE	E.M.N.NO	DRAFT	CHKD	APPD
			Ø	ORIG RELEASE FOR PROD	1/13/72		CV		



A - $\frac{3}{16} \times \frac{1}{2}$ SLOT A REQD

B .251-.254 D.HOLE 3 R B O D
(FOR NT 129-1032-6)

MATL $\frac{1}{8}$ ALUM - 5052-H32 FORGED
OR $\frac{1}{8}$ EXTRUDED

REQ'D ITEM	PART NUMBER	DESCRIPTION	SYM.
LIST OF MATERIAL			
THE TECHNICAL MATERIEL CORP. MAMARONECK, NEW YORK			
CHANNEL, SUPT.			
SIZE	CODE IDENT. NO.	DWG NO.	ISSUE
A	82679	M56297	Ø
SCALE	SHEET	OF	

UNLESS OTHERWISE SPECIFIED
DIMENSIONS ARE IN INCHES
AND INCLUDE CHEMICALLY APPLIED
OR PLATED FINISHES

DECIMALS
.X ± .05 TOLS. 1/64
.XX ± .01 ANGLES 0°-30'
.XXX ± .005

MATERIAL $\frac{1}{8}$ ALU
5052-H32

FINISH
5404 YEL IRID

FINAL APPROVAL	DATE
<i>[Signature]</i>	6/26/71
MECH. DES.	DATE
<i>[Signature]</i>	6/26/71
ELECT. DES.	DATE
CHECKED	DATE
DRAWN	DATE
AC	1/15/67

NOTICE TO PERSONS RECEIVING THIS DRAWING

THE TECHNICAL MATERIEL CORPORATION claims proprietary right in the material disclosed hereon. This drawing is issued in confidence for engineering information only and may not be reproduced or used to manufacture anything shown hereon without permission from THE TECHNICAL MATERIEL CORPORATION to the user. This drawing is loaned for mutual assistance and is subject to recall at any time.