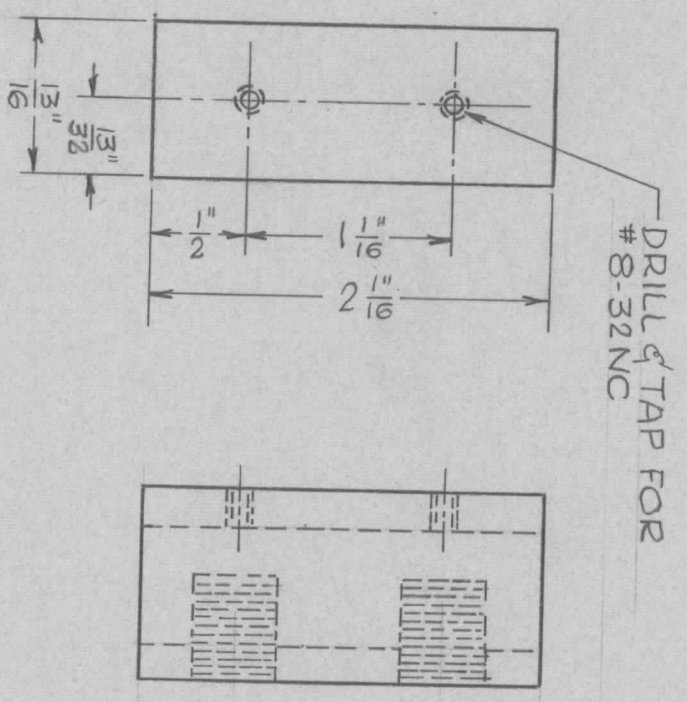


REVISIONS				
LTR	DESCRIPTION	DATE	DRAFT	CHECKED
				APPD



SPA-250 ILSCO LUG

QTY REQ	ITEM	PART NO.	MANUFACTURER	DESCRIPTION	SYM
				THE TMC SYSTEMS AND POWER CORPORATION SPRINGFIELD, VIRGINIA	
				MODIFIED CABLE LUG	
				AX 750	
				USED ON	
				APPLICATION	

UNLESS OTHERWISE SPECIFIED DIMENSIONS ARE IN INCHES AND INCLUDE CHEMICALLY APPLIED OR PLATED FINISHES REMOVE ALL BURRS AND SHARP EDGES.	DRAWN FERNANDEZ	DATE 2/21/73
TOLERANCES ON FRACTIONS ANGLES DECIMALS	CHECKED	DATE
MATERIAL	D. ENG.	DATE
FINISH	P. ENG. epb	DATE 21Feb73
	P. MGR.	DATE
	CHIEF ENG. DEPT.	DATE

SIZE B	CODE IDENT NO. 24146	DWG. NO. MS6161	REV
SCALE FULL			

NOTICE TO PERSONS RECEIVING THIS DRAWING
 THE TMC SYSTEMS AND POWER CORPORATION claims proprietary right in the material disclosed hereon. This drawing is issued in confidence for engineering information only and may not be reproduced or used to manufacture anything shown hereon without permission from THE TMC SYSTEMS AND POWER CORPORATION to the user. This drawing is loaned for mutual assistance and is subject to recall at any time.