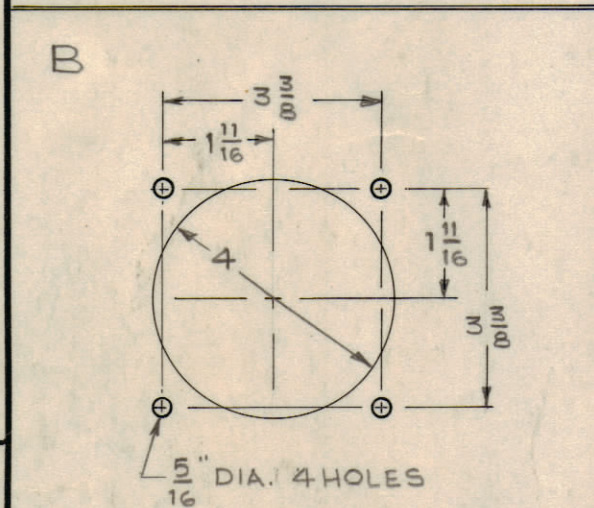
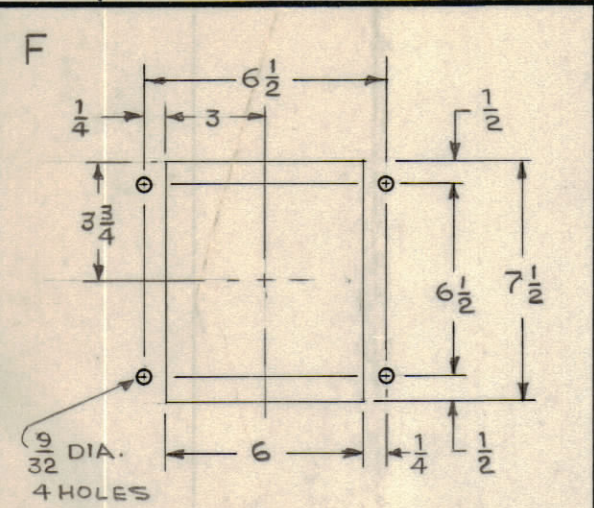
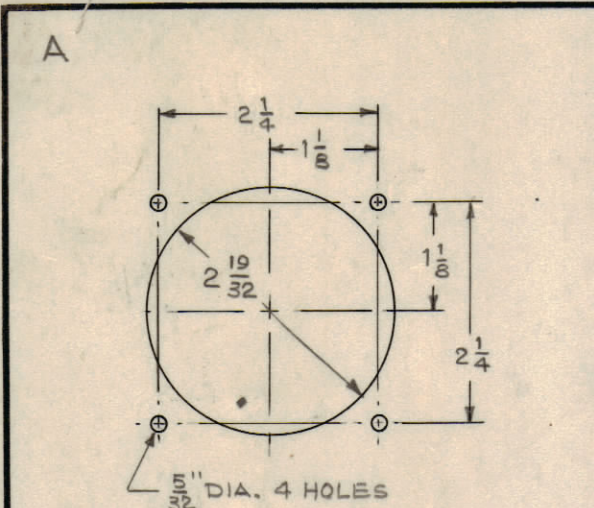
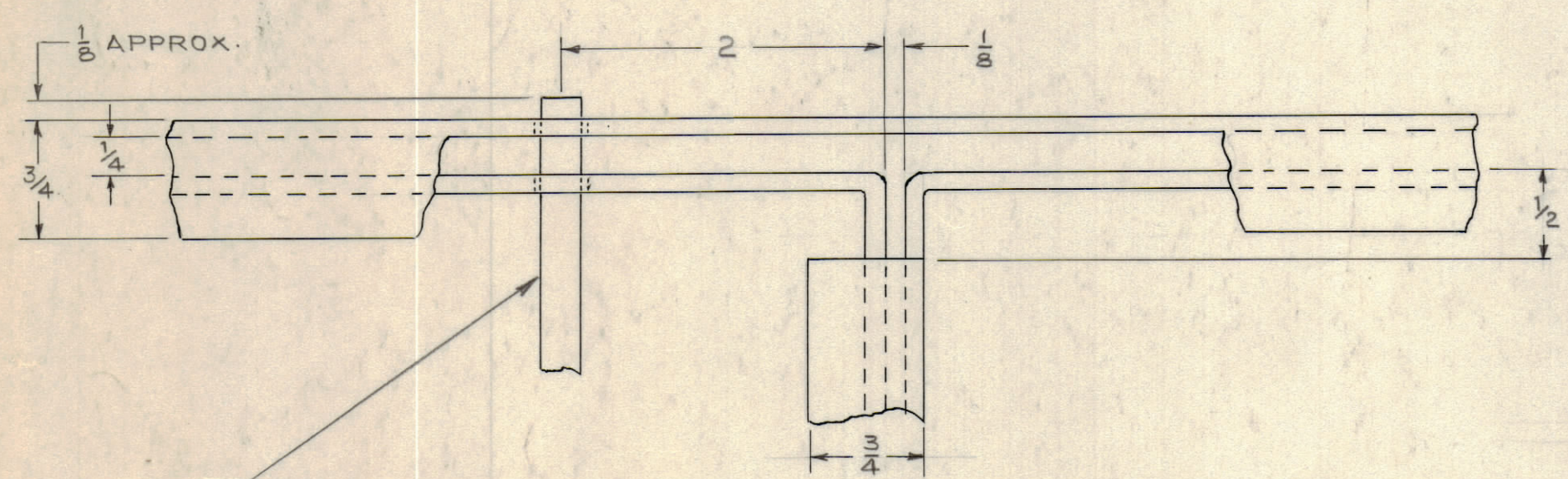
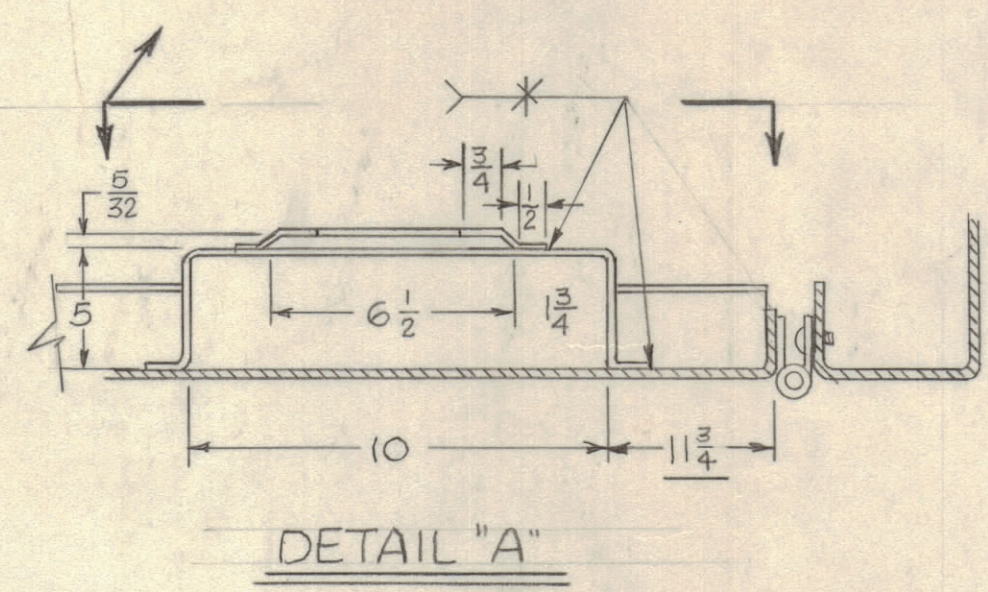
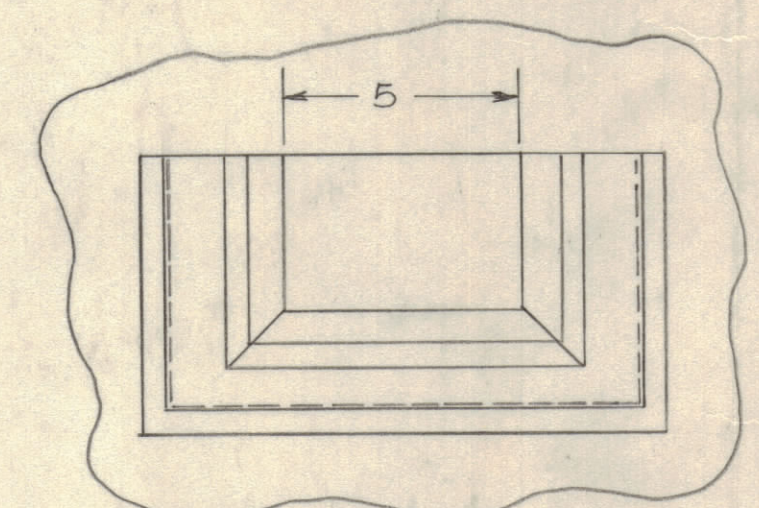
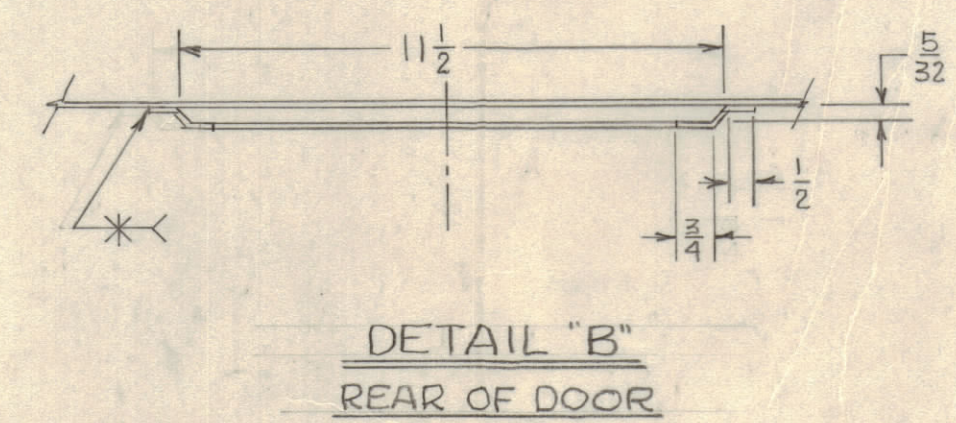
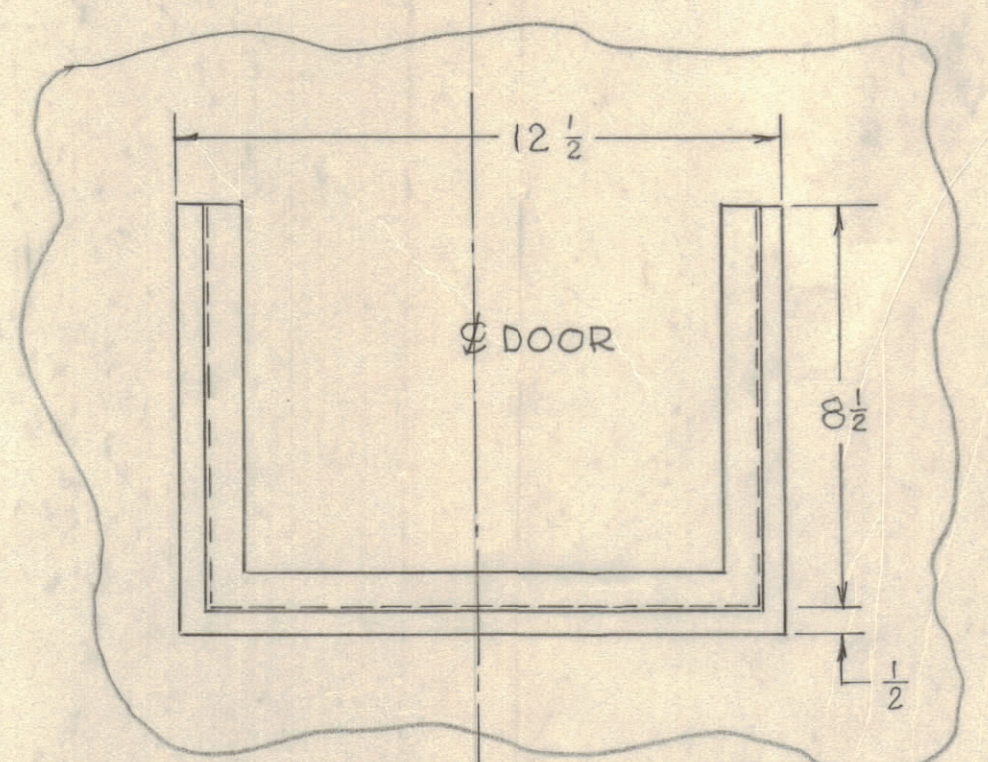
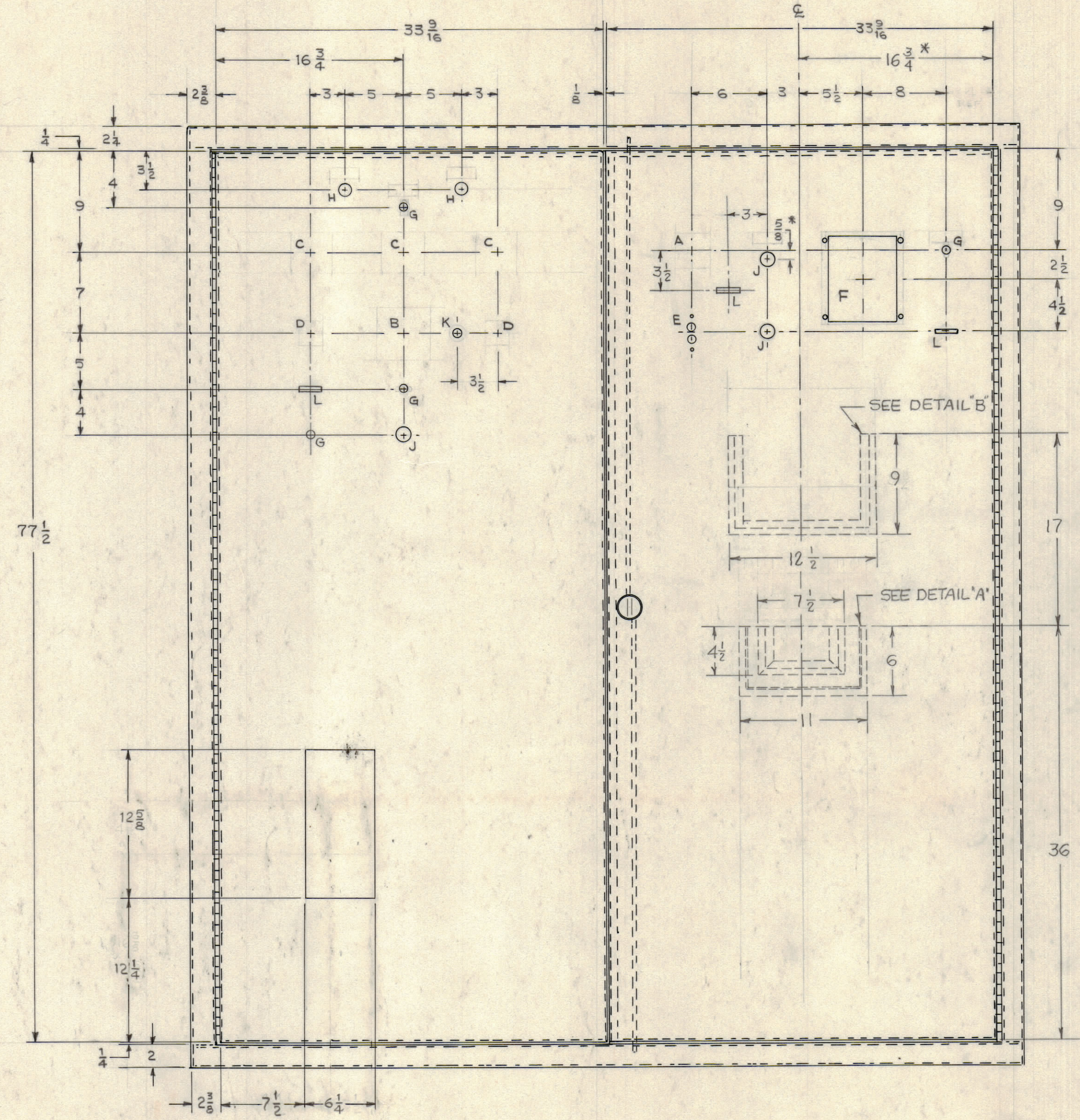
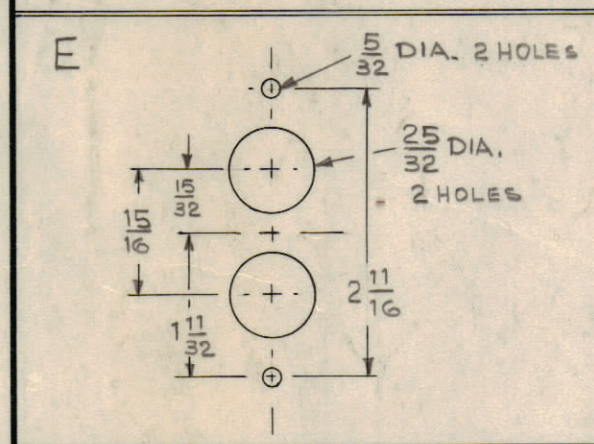
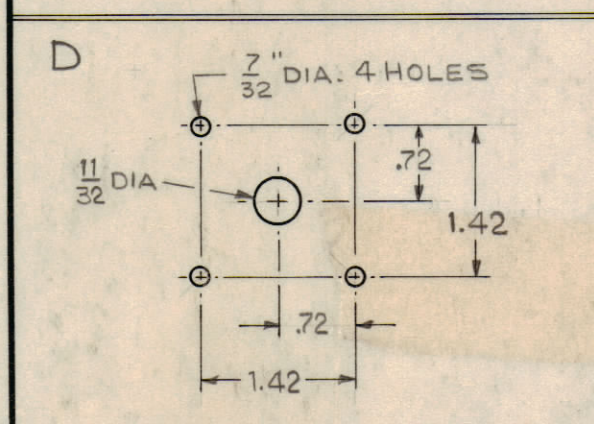
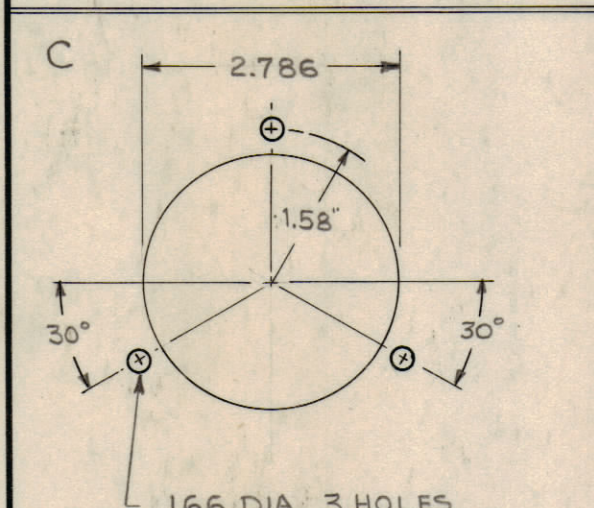


REVISIONS						
ZONE	LTR	DESCRIPTION	DATE	DRAFT	CHK'D	APP'D
A		REV. AS PER ASTERICK *	11-25-72	RM		

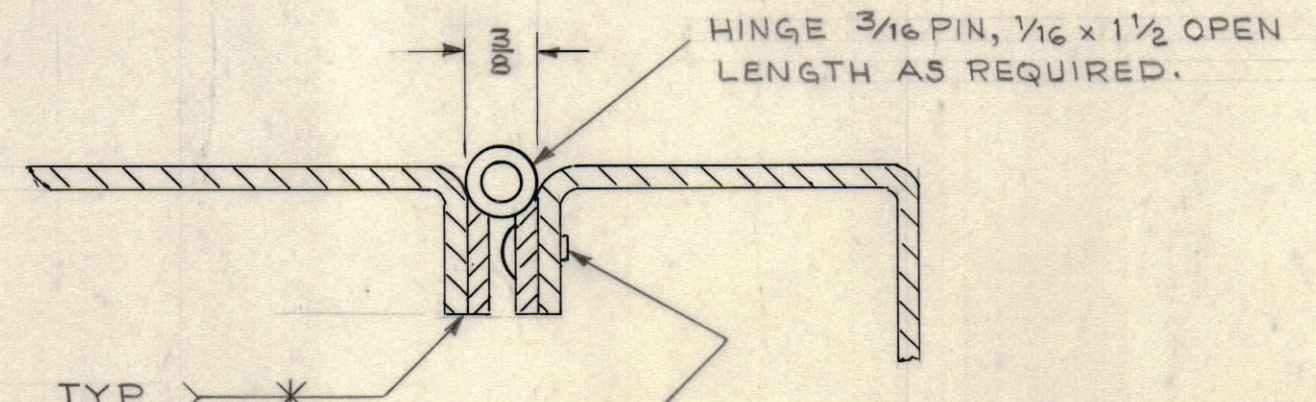


- G - 13/32"
- H - 1"
- J - 1 3/16"
- K - 1/2"
- L - 3/8 x 1 1/16" + 1/64"



INSIDE REAR SECTION
DOORS
SCALE 1/1

DOOR LATCH DIMENSION CAN CHANGE, LATCH IS TO BE PROVIDED AND FITTED BY CABINET MANUFACTURE.



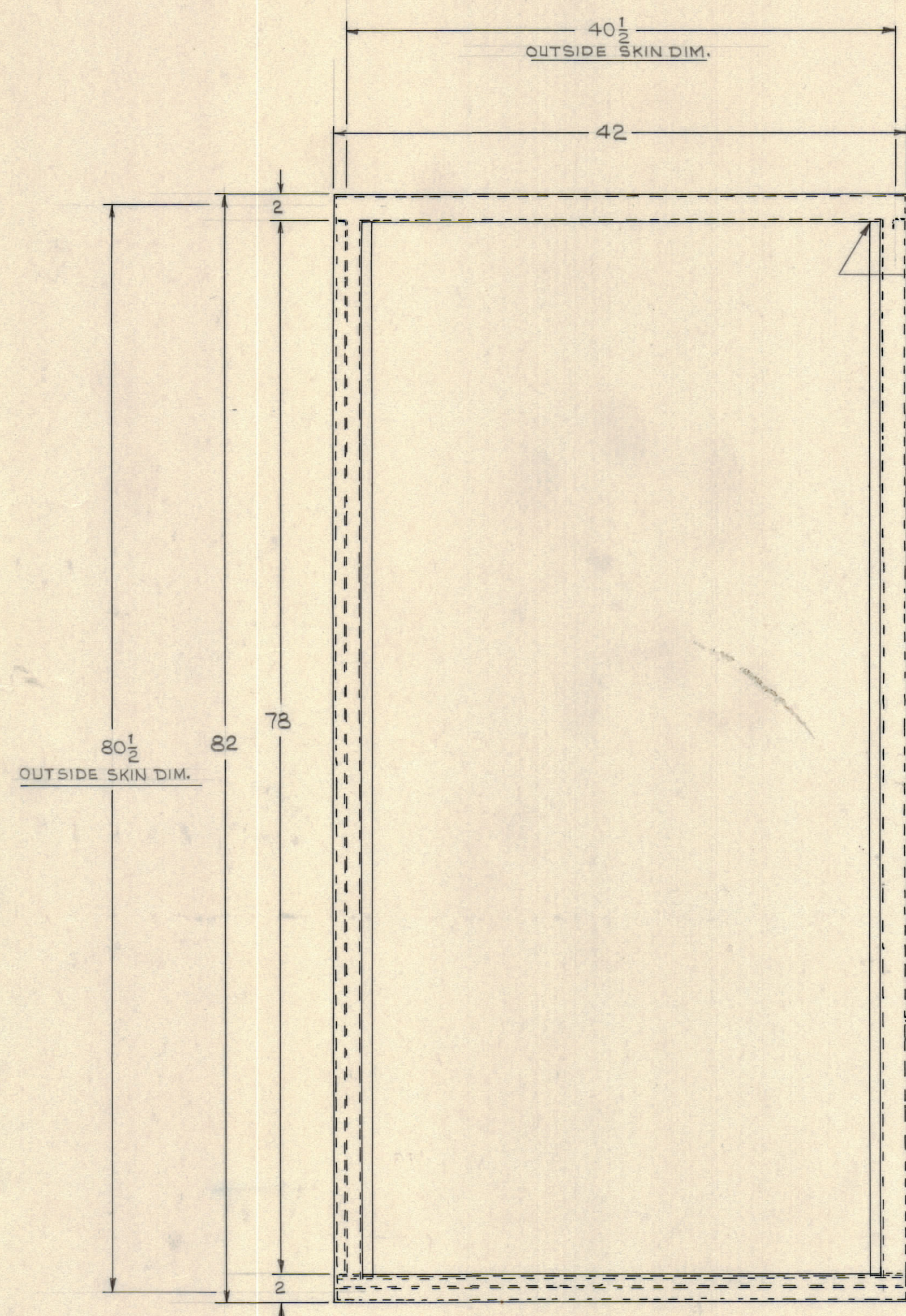
DOOR MOUNTING DETAIL
TYPICAL BOTH DOORS
SCALE 1/1

TAP 10-32 UNC-2B
NO. 10-32 x 3/8 LG.

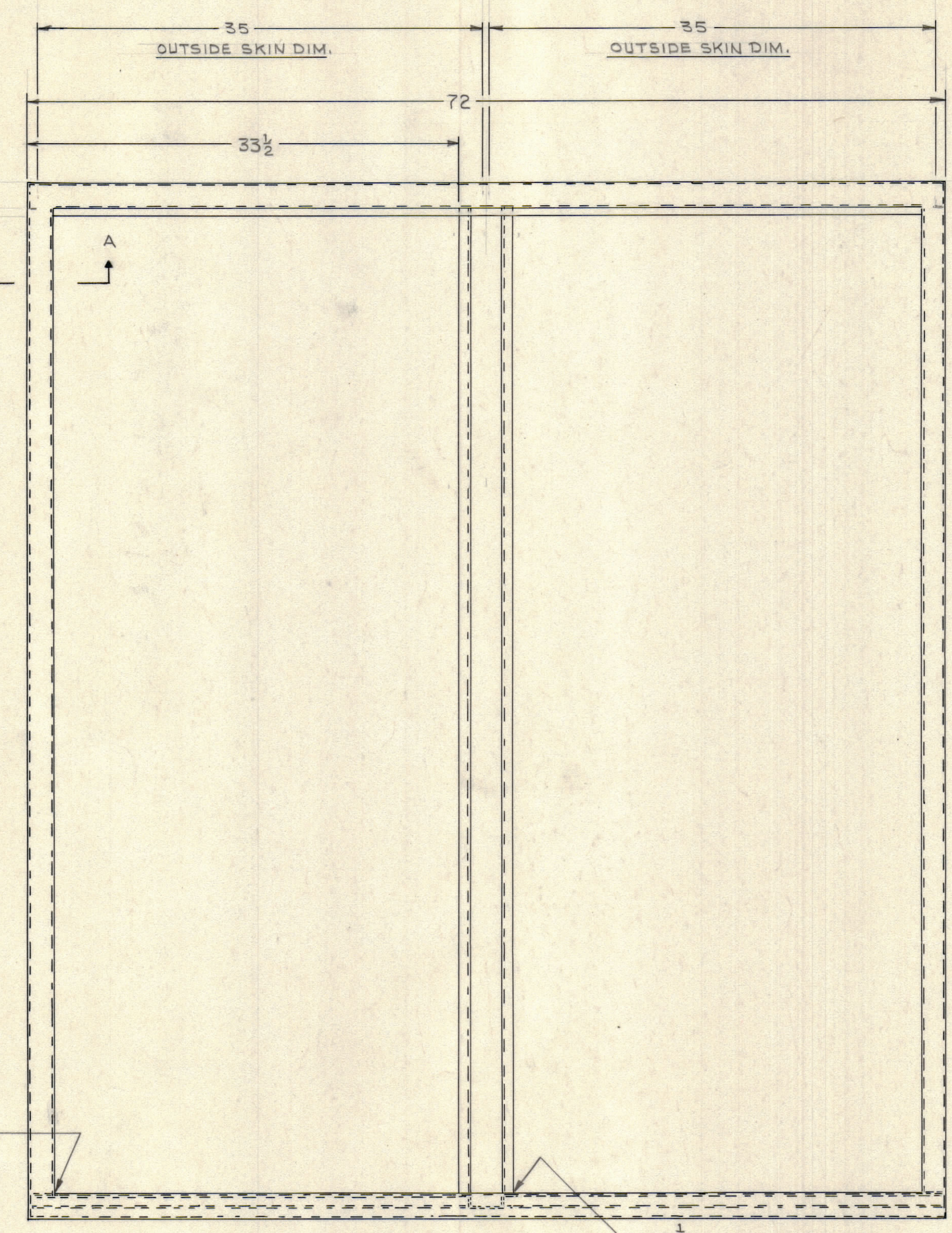
QTY REQ	QTY REQ	QTY REQ	ITEM	PART NO.	MANUFACTURER	DESCRIPTION	SYM
PARTS LIST							
			INTERPRET DRAWING PER LISTED DOCUMENTS				
			DIMENSIONING MIL - STD - 8 SURFACE ROUGHNESS MIL - STD - 10 ABBREVIATIONS MIL - STD - 12 ELECTRONIC SYMBOLS MIL - STD - 15 WELDING SYMBOLS JAN - STD - 19				
			UNLESS OTHERWISE SPECIFIED DIMENSIONS ARE IN INCHES AND INCLUDE CHEMICALLY APPLIED OR PLATED FINISHES REMOVE ALL BURRS AND SHARP EDGES				
			TOLERANCES ON FRACTIONS ANGLES DECIMALS				
			MATERIAL 11 GA. CRS				
			FINISH				
			NOTICE TO PERSONS RECEIVING THIS DRAWING THE TMC SYSTEMS AND POWER CORPORATION claims proprietary right in the material disclosed hereon. This drawing is issued in confidence for engineering information only and may not be reproduced or used to manufacture anything shown hereon without permission from THE TMC SYSTEMS AND POWER CORPORATION to the user. This drawing is loaned for mutual assistance and is subject to recall at any time.				

QTY REQ	QTY REQ	QTY REQ	ITEM	PART NO.	MANUFACTURER	DESCRIPTION	SYM	
PARTS LIST								
			DRAWN MITCH	DATE 10-23-72	THE TMC SYSTEMS AND POWER CORPORATION SPRINGFIELD, VIRGINIA			
			CHECKED	DATE				
			D. ENG.	DATE				
			P. ENG. <i>CRB</i>	DATE Nov 32				
			P. MGR.	DATE	CONTROL CABINET FABRICATION ASSEMBLY 120/208 VOLT SYSTEM. FAA			
			CHIEF, ENG. DEPT.	DATE				
					SIZE D	CODE IDENT NO 24146	DWG. NO. MS6140	REV A
					SCALE		SHEET 1 OF 3	

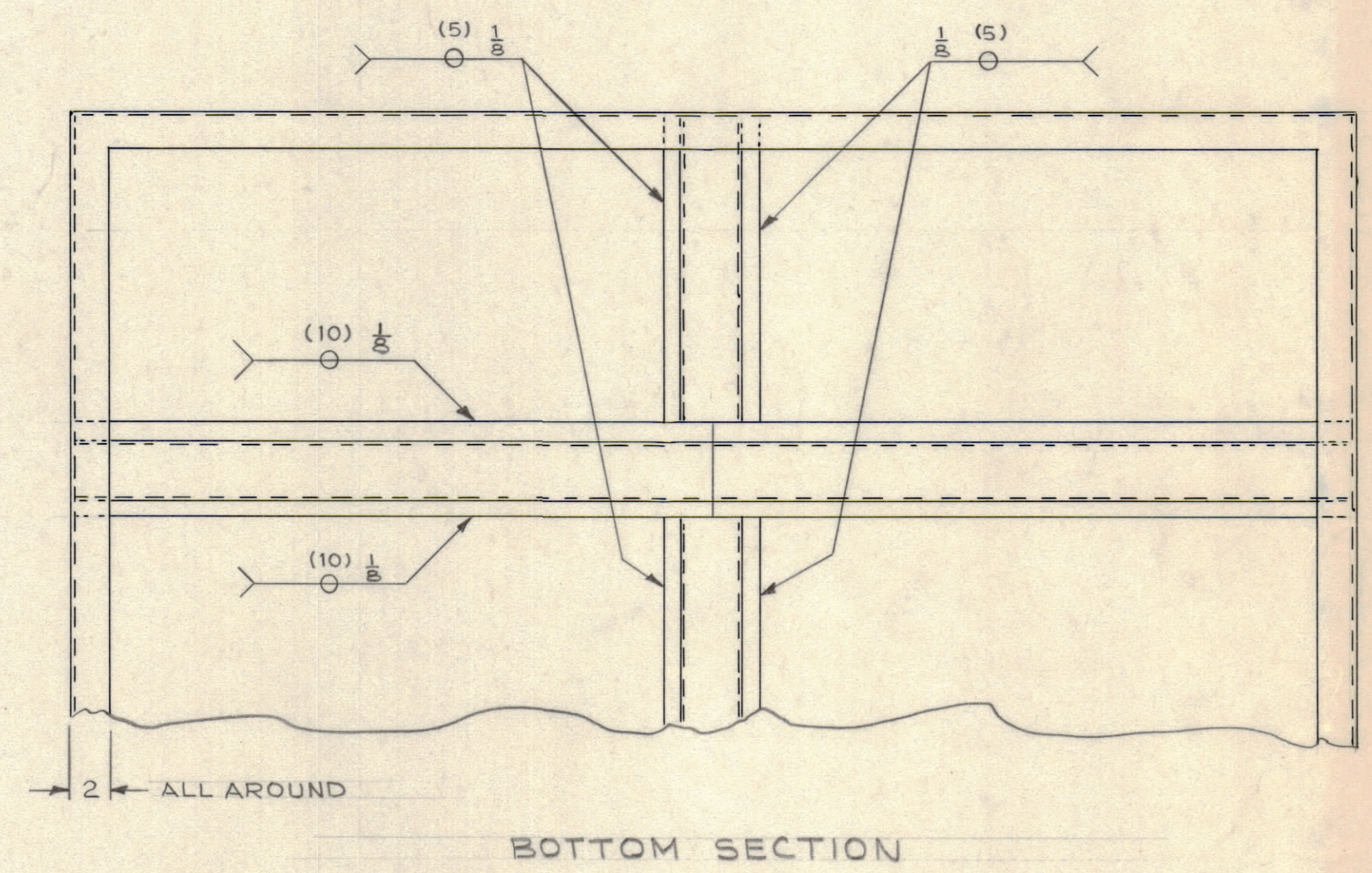
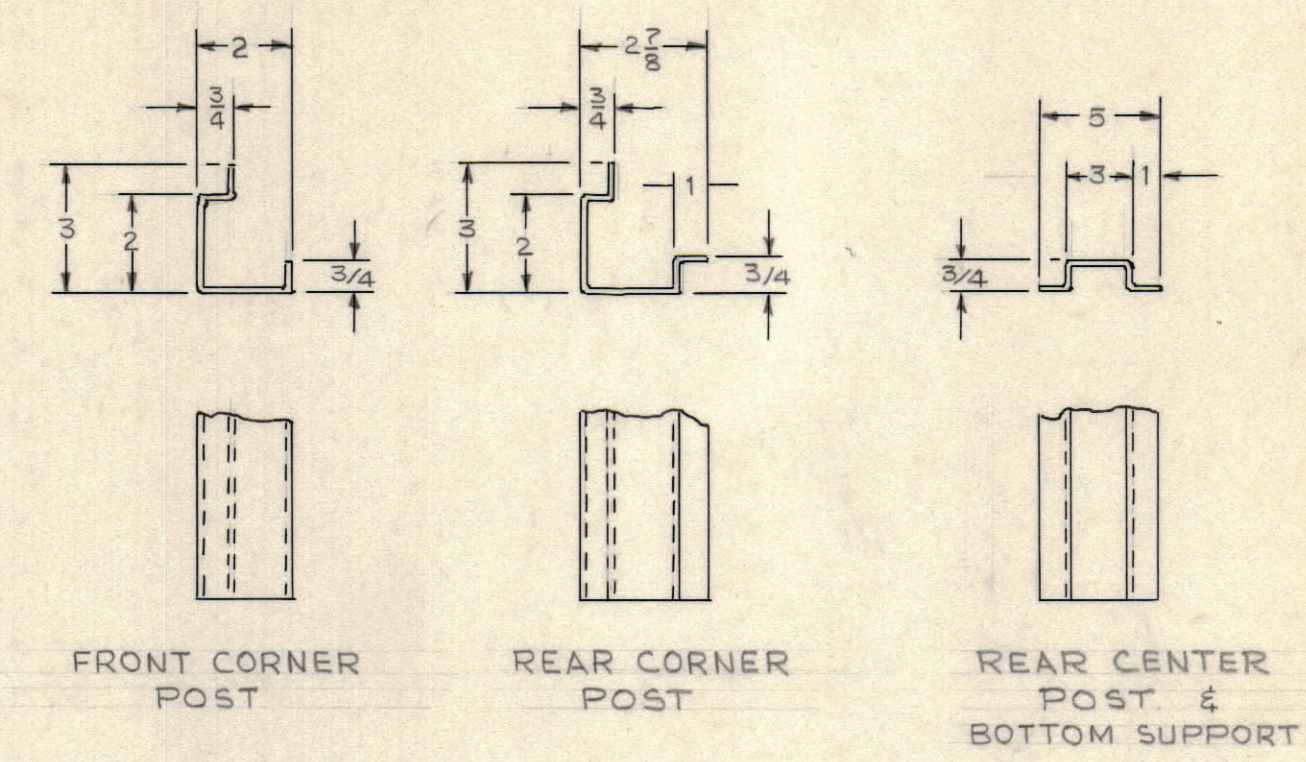
REVISIONS						
ZONE	LTR	DESCRIPTION	DATE	DRAFT	CHK'D	APPD



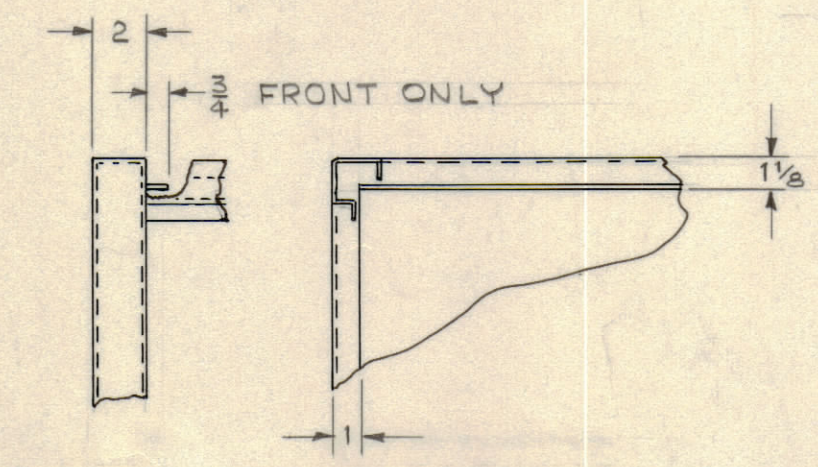
SIDE VIEW



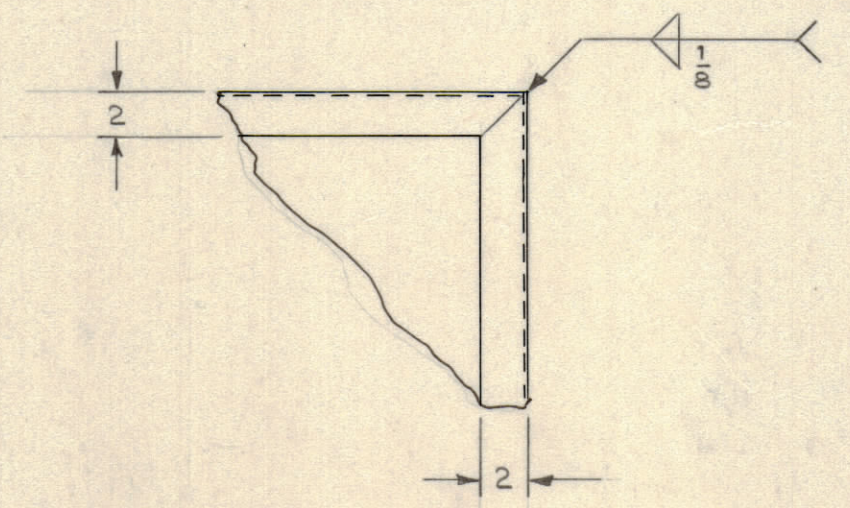
FRONT VIEW



BOTTOM SECTION



TOP INSIDE SECTION VIEW A-A



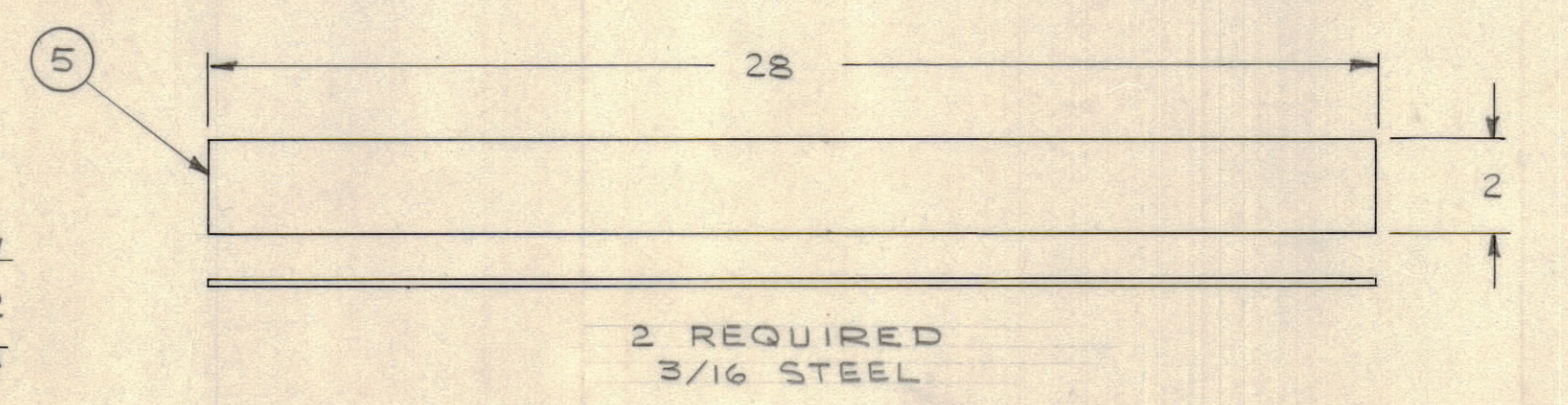
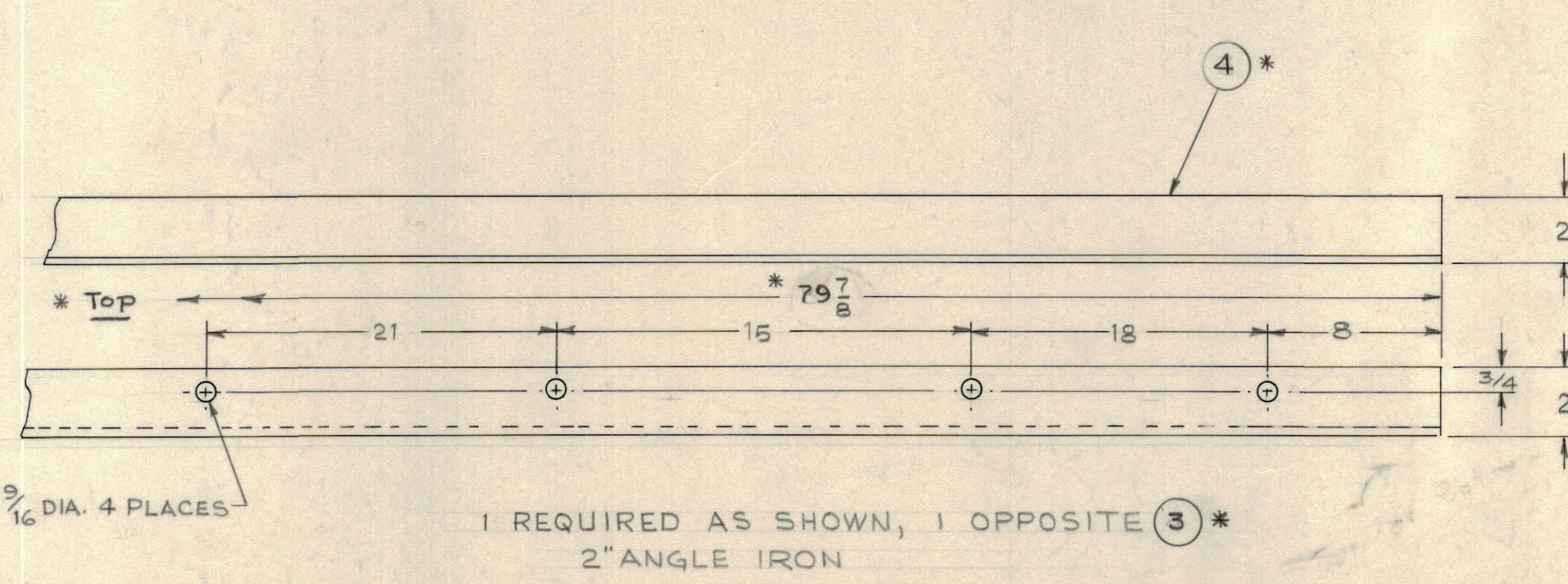
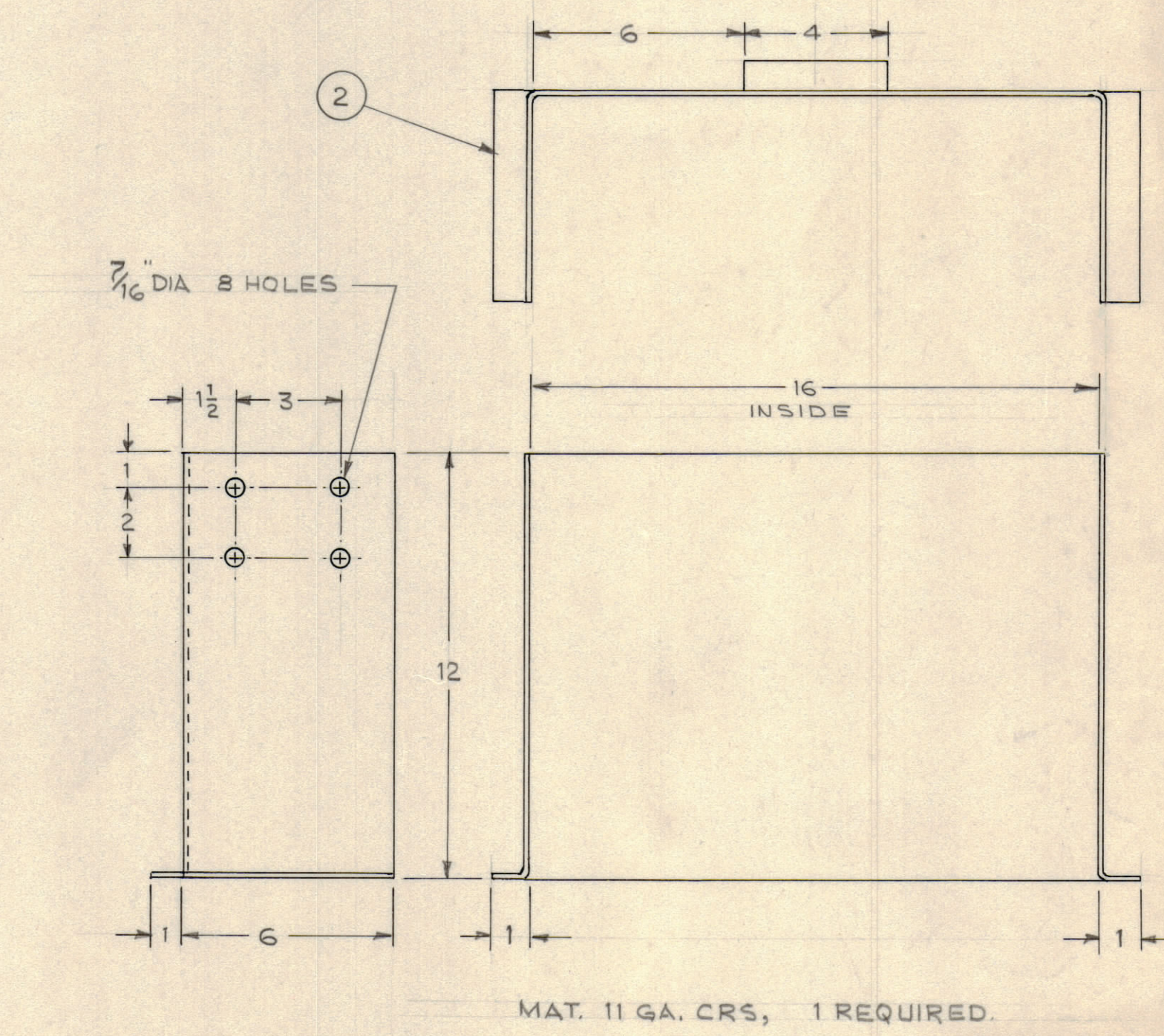
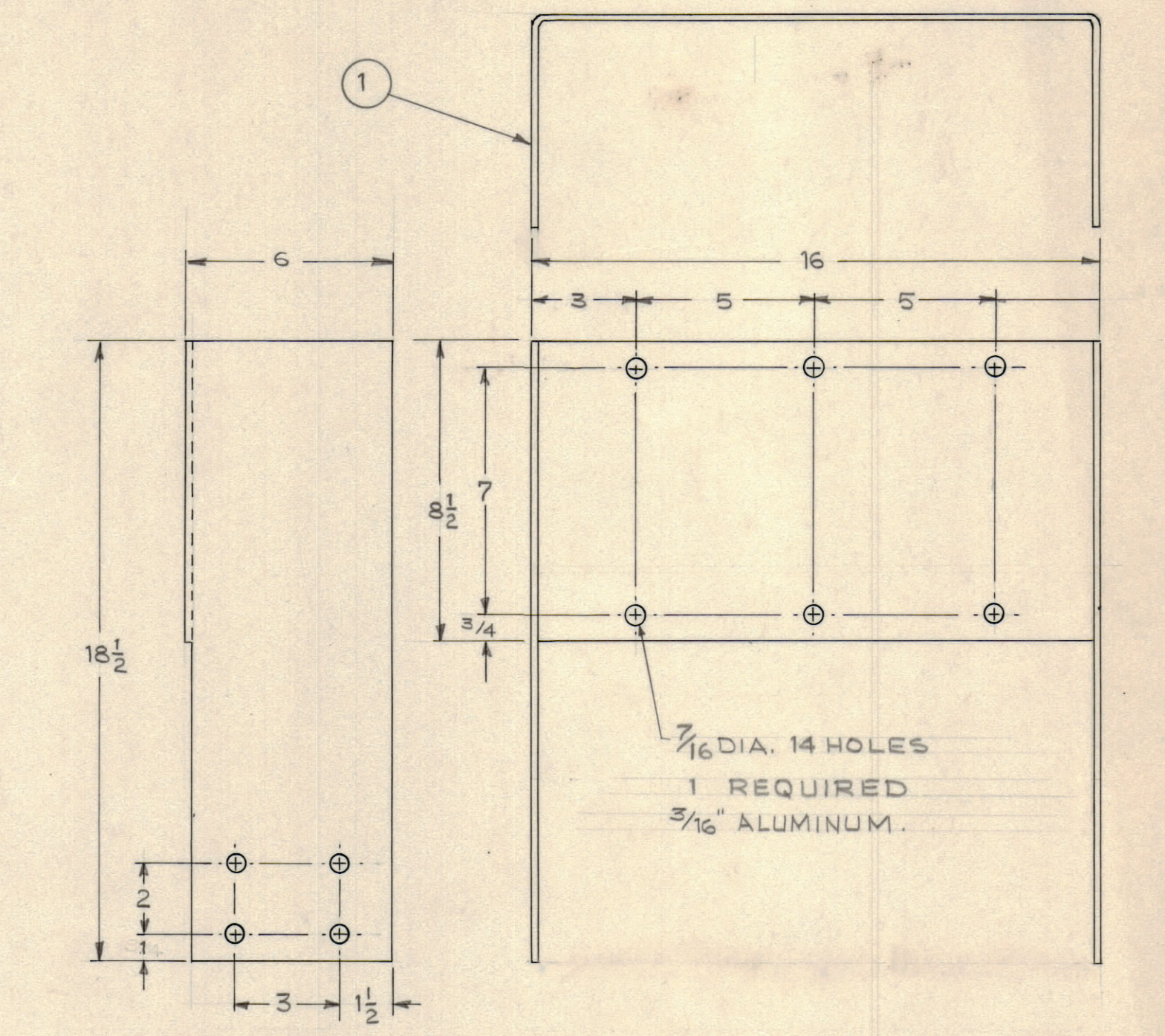
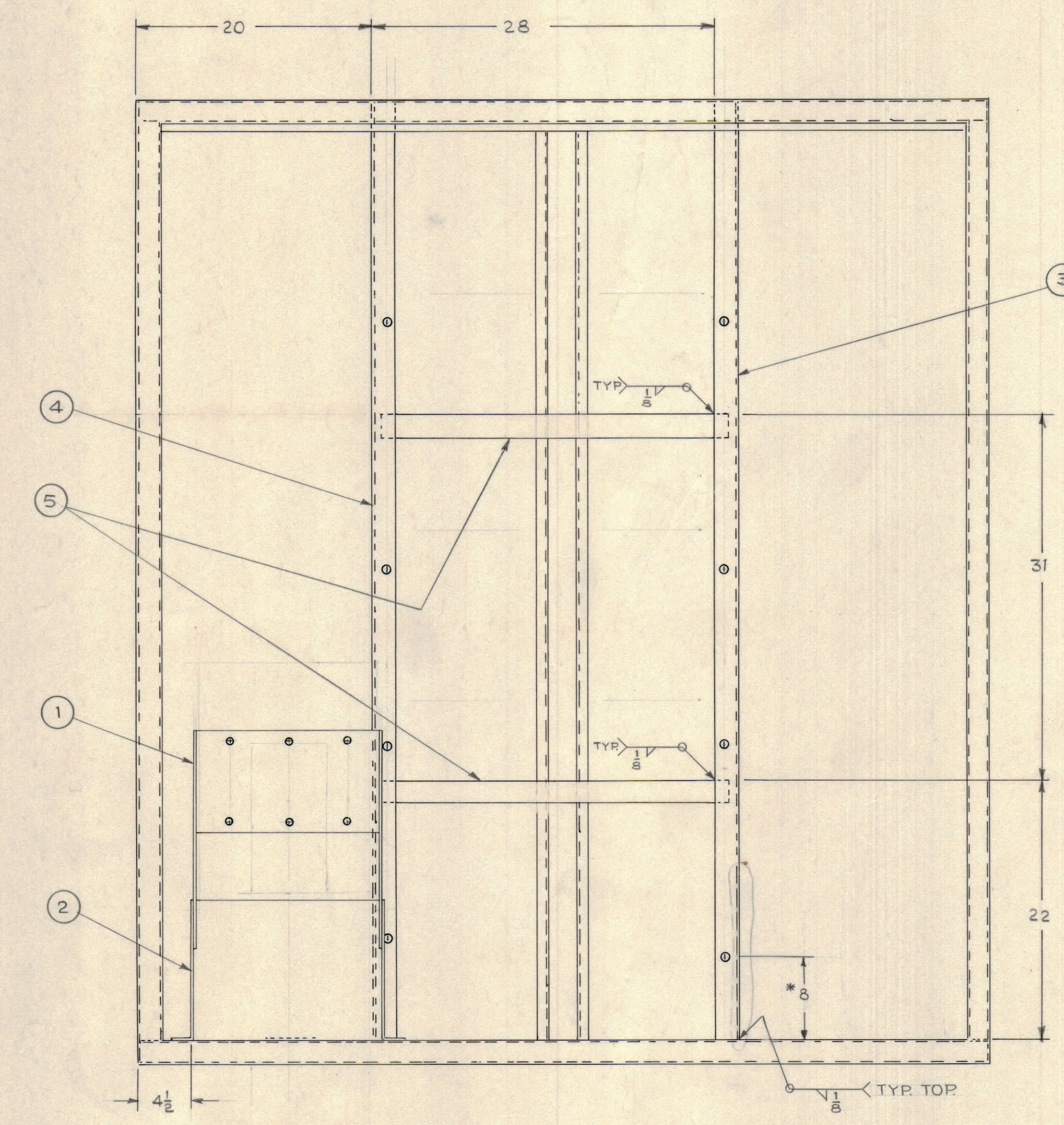
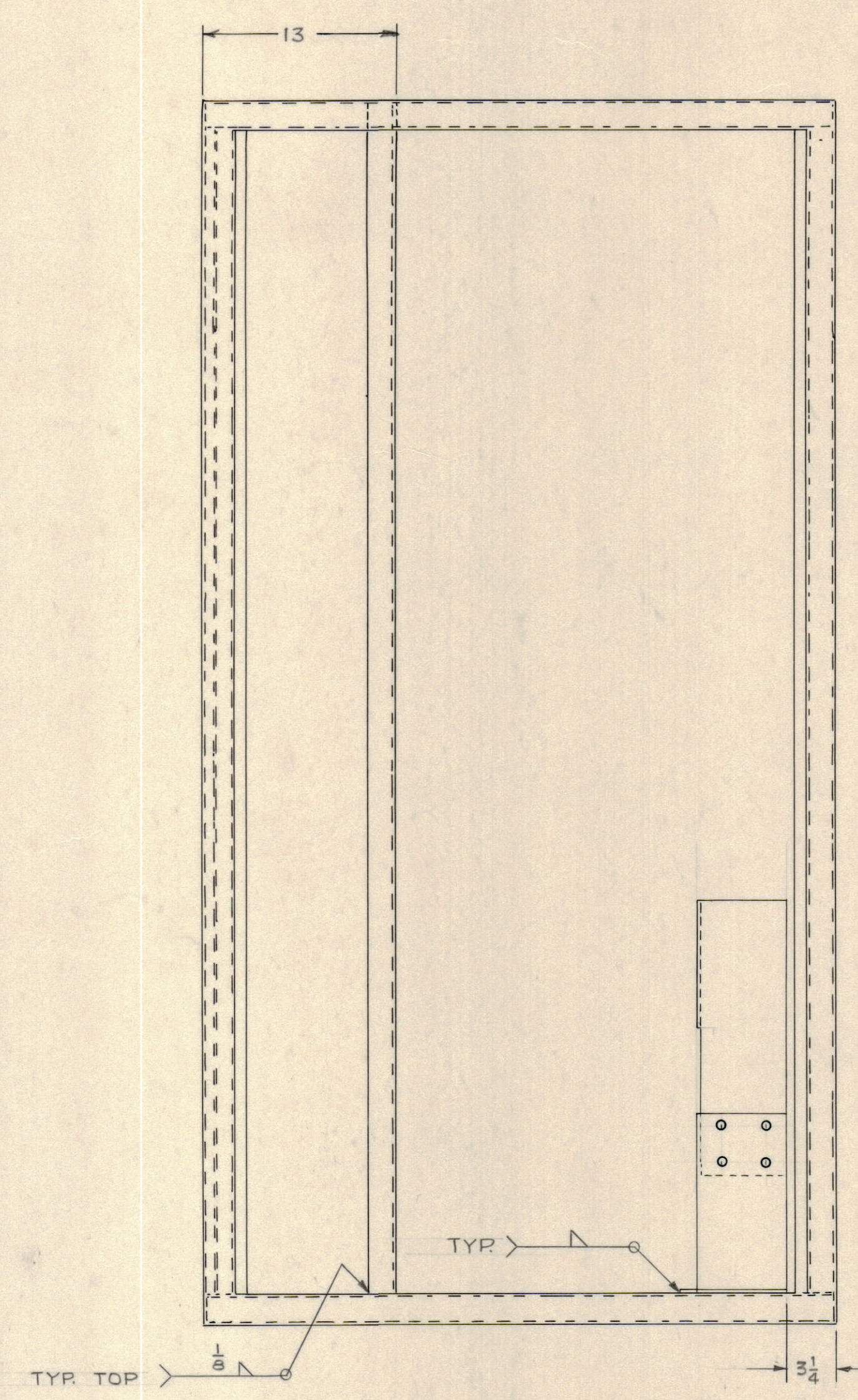
BOTTOM SECTION

- NOTE:
1. MATERIAL - 11 GAUGE CRS.
 2. SIDE AND REAR SKIN TO BE FABRICATED FROM 14 GA. CRS, MOUNTED WITH 1/4 SELF THREADING SCREWS. SIX (6) VERTICAL, THREE (3) HORIZONTAL, TOTAL 18 EACH SKIN.
 3. REMOVE ALL BURRS AND SHARP EDGES.
 4. PAINT IN ACCORDANCE WITH TMC SPEC NO. P4000
 5. SEE DWG. NO. AX721 FOR HOLE LOCATION IN TOP.

QTY REQ	QTY REQ	QTY REQ	ITEM	PART NO.	MANUFACTURER	DESCRIPTION	SYM
PARTS LIST							

INTERPRET DRAWING PER LISTED DOCUMENTS		UNLESS OTHERWISE SPECIFIED DIMENSIONS ARE IN INCHES AND INCLUDE CHEMICALLY APPLIED OR PLATED FINISHES REMOVE ALL BURRS AND SHARP EDGES		DRAWN MITCH DATE 10-23-72	THE TMC SYSTEMS AND POWER CORPORATION SPRINGFIELD, VIRGINIA	
DIMENSIONING MIL - STD - 8 SURFACE ROUGHNESS MIL - STD - 10 ABBREVIATIONS MIL - STD - 12 ELECTRONIC SYMBOLS MIL - STD - 15 WELDING SYMBOLS JAN - STD - 19		TOLERANCES ON FRACTIONS ANGLES DECIMALS ± 3/32		CHECKED DATE	CONTROL CABINET FABRICATION ASSEMBLY 120/208 VOLT SYSTEM FAA.	
NEXT ASSY	USED ON	MATERIAL NOTED		D. ENG. DATE	SIZE D	CODE IDENT NO 24146
APPLICATION		FINISH		P. ENG. <i>ERB</i> DATE NOV 72	DWG. NO. MS6140	REV A
NOTICE TO PERSONS RECEIVING THIS DRAWING THE TMC SYSTEMS AND POWER CORPORATION claims proprietary right in the material disclosed hereon. This drawing is issued in confidence for engineering information only and may not be reproduced or used to manufacture anything shown hereon without permission from THE TMC SYSTEMS AND POWER CORPORATION to the user. This drawing is loaned for mutual assistance and is subject to recall at any time.				P. MGR. DATE	SCALE	SHEET 2 OF 3
				CHIEF, ENG. DEPT. DATE		

REVISIONS						
ZONE	LTR	DESCRIPTION	DATE	DRAFT	CHK'D	APPD



1 REQUIRED AS SHOWN, 1 OPPOSITE (3) *
2" ANGLE IRON

QTY REQ	QTY REQ	QTY REQ	ITEM	PART NO.	MANUFACTURER	DESCRIPTION	SYM
PARTS LIST							
DRAWN MITCH				DATE 10-23-72			
CHECKED				DATE			
D. ENG.				DATE			
P. ENG. <i>ERB</i>				DATE Nov 72			
P. MGR.				DATE			
CHIEF, ENG. DEPT.				DATE			
SIZE	CODE IDENT NO	DWG. NO.		REV			
D	24146	MS6140		A			
SCALE				SHEET 3 OF 3			

INTERPRET DRAWING PER LISTED DOCUMENTS

UNLESS OTHERWISE SPECIFIED DIMENSIONS ARE IN INCHES AND INCLUDE CHEMICALLY APPLIED OR PLATED FINISHES REMOVE ALL BURRS AND SHARP EDGES

TOLERANCES ON FRACTIONS ANGLES DECIMALS ± 3/32 - -

MATERIAL NOTED

FINISH IN ACCORDANCE WITH TMC SPEC P4000

NOTICE TO PERSONS RECEIVING THIS DRAWING THE TMC SYSTEMS AND POWER CORPORATION claims proprietary right in the material disclosed hereon. This drawing is issued in confidence for engineering information only and may not be reproduced or used to manufacture anything shown hereon without permission from THE TMC SYSTEMS AND POWER CORPORATION to the user. This drawing is loaned for mutual assistance and is subject to recall at any time.

THE TMC SYSTEMS AND POWER CORPORATION
SPRINGFIELD, VIRGINIA

CONTROL CABINET
FABRICATION ASSEMBLY
120/208 VOLT SYSTEM FAA