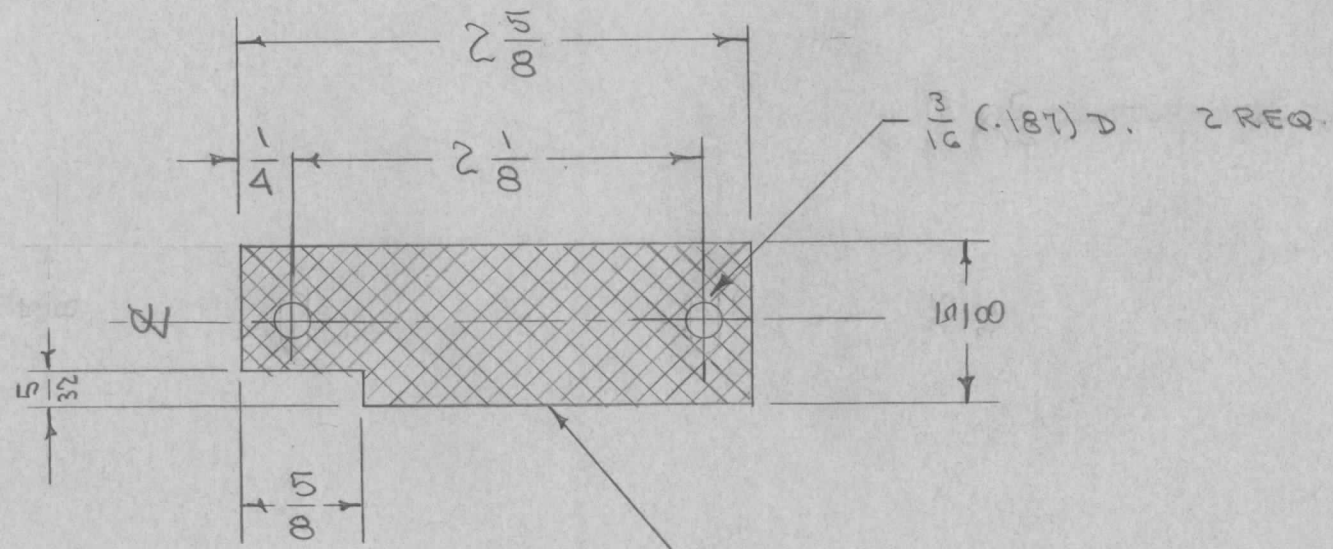


IF IT IS FOUND DESIRABLE TO CHANGE ANY TOLERANCE OR OTHER DETAIL SPECIFIED ON THIS DRAWING NOTIFY THE PURCHASER PROMPTLY.

MS-601 A

MAXIMUM ALLOWABLE TOLERANCES HAVE BEEN DETERMINED AND DEVIATIONS WILL BE CAUSE FOR REJECTION. REMOVE ALL BURRS AND SHARP EDGES

REQ. PER UNIT	USED ON			
	MODEL	PROJECT NO.	ASS'Y. NO.	DATE
1	VOX-1			1-24-55



.072 HOLES ON 1/8 CENTERS

REQ.	ITEM	PART NO.	DESCRIPTION	SYMBOL
		.051	THE TECHNICAL MATERIEL CORP.	
		STOCK SIZE	MAMARONECK. NEW YORK	
		ALUMINUM	SCREEN, VENTILATING	
		MATERIAL	WEIGHT PER PC.	
		52SH32 PERFORATED		
		TYPE & TEMPER	DRW. 1-24-55	WE
		HEAT TREAT. SPEC.	DRAWN	ELEC. DES. APP.
		FINISH & SPEC. NO.	CHKD 1-24-55	MECH. DES. APP.
			CHECKED	FINAL APPROVAL
				MS-601 A

ISSUE	ITEM	CHANGED FROM	DATE	CN. NO.	DRAFTS	CHECKER	ENG. APP.
A	1	S404- IRIDITE WAS S101- CAUSTIC DIP	12-7 59	1001	VP		EMN

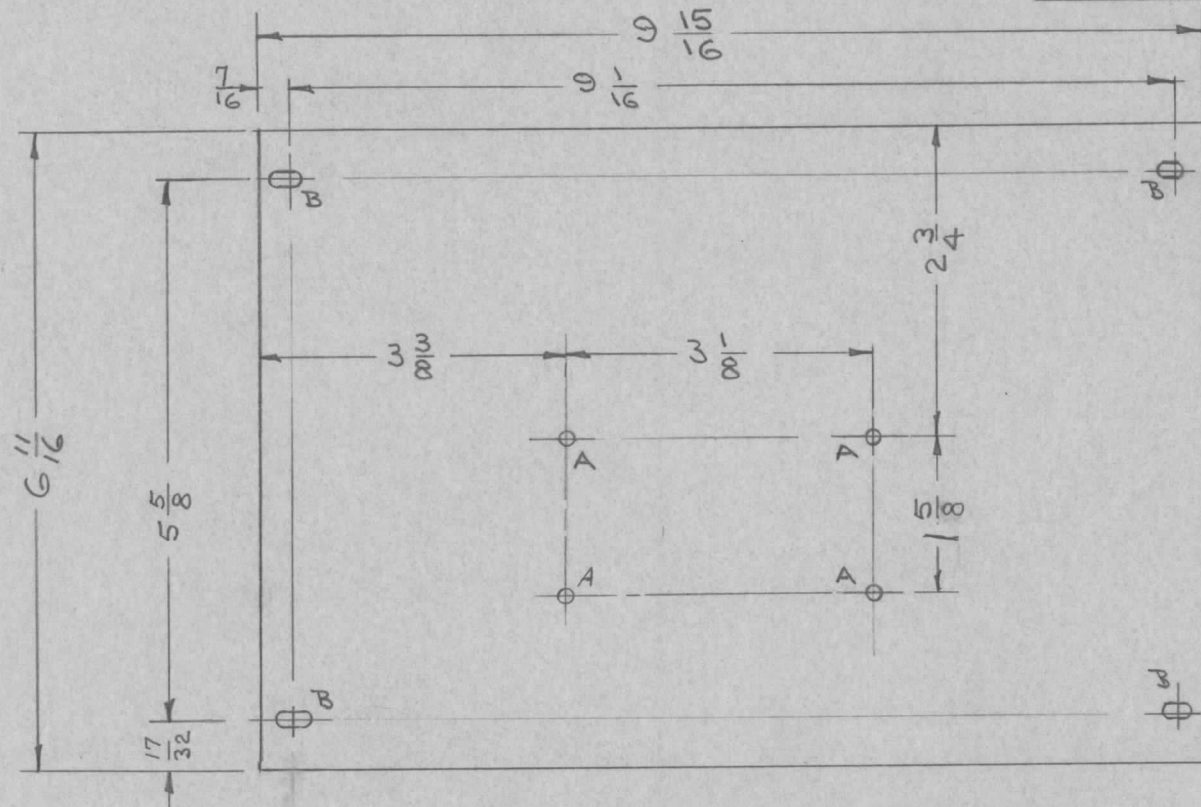
TOLERANCES	SCALE
DEC. DIM. ± FRAC. DIM. ± 1/64 ANGULAR DIM. ±	DRILL, PUNCH, COMMERCIAL STOCK SIZES AND MANUFACTURERS TOLERANCES ARE NOT INCLUDED.

IF IT IS FOUND DESIRABLE TO CHANGE ANY TOLERANCE OR OTHER DETAIL SPECIFIED ON THIS DRAWING NOTIFY THE PURCHASER PROMPTLY.

MS-605 B

MAXIMUM ALLOWABLE TOLERANCES HAVE BEEN DETERMINED AND DEVIATIONS WILL BE CAUSE FOR REJECTION. REMOVE ALL BURRS AND SHARP EDGES

REQ. PER UNIT	USED ON			
	MODEL	PROJECT NO.	ASS'Y. NO.	DATE
1	VOX			1-19-55
1	VOX-1			2-1-55
	VOX-2			



A - 1/8 (.125) D 4 REQ.
 B - 5/32 x 5/16 SLOTS 4 REQ.

B	1	S404 - IRIDITE WAS 5101 - CAUSTIC DIP	12-7 59	1001	P		EMN
A	1	ONE "A" HOLE ADDD.	2-4-55	1	P.B.	WDE	WDE
ISSUE	ITEM	CHANGED FROM	DATE	CN. NO.	DRAFTS	CHECKER	ENG. APP.
TOLERANCES			SCALE				
ALL OTHERS	DEC. DIM. ± FRAC. DIM. ± 1/64 ANGULAR DIM. ±		DRILL, PUNCH, COMMERCIAL STOCK SIZES AND MANUFACTURERS TOLERANCES ARE NOT INCLUDED.				

REQ.	ITEM	PART NO.	DESCRIPTION	SYMBOL
		.051 THK	THE TECHNICAL MATERIEL CORP. MAMARONECK. NEW YORK	
		STOCK SIZE		
		ALUMINUM	OVEN SUPPORT COVER	
		MATERIAL	TOP	
		WEIGHT PER PC.		
		525-H32		
		TYPE & TEMPER	DATE 2-1-55	WDE
			DRAWN	ELEC. DES. APP.
				MECH. DES. APP.
			CHECKED	FINAL APPROVAL
		HEAT TREAT. SPEC.		
		S404-IRIDITE		MS-605 B
		FINISH & SPEC. NO.		

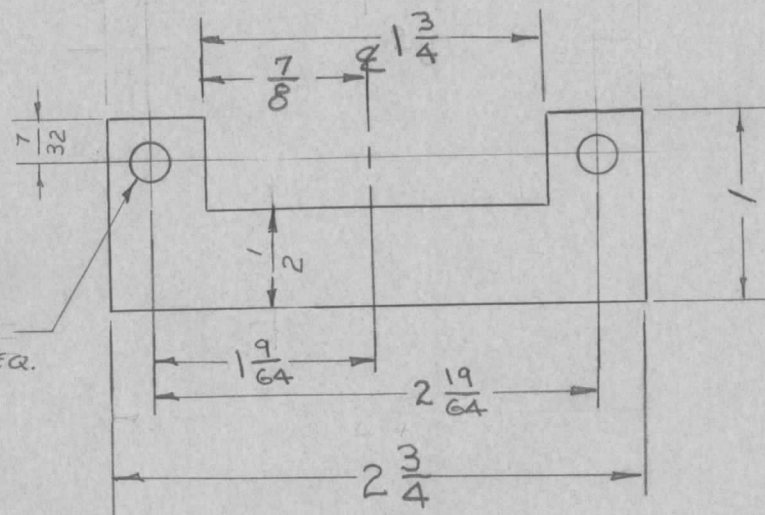
IF IT IS FOUND DESIRABLE TO CHANGE ANY TOLERANCE OR OTHER DETAIL SPECIFIED ON THIS DRAWING NOTIFY THE PURCHASER PROMPTLY.

MS-628

A

MAXIMUM ALLOWABLE TOLERANCES HAVE BEEN DETERMINED AND DEVIATIONS WILL BE CAUSE FOR REJECTION. REMOVE ALL BURRS AND SHARP EDGES

REQ. PER UNIT	USED ON			DATE
	MODEL	PROJECT NO.	ASS'Y. NO.	
1	TR-110			3-17-55



7/32 (.218) D
2 HOLES REQ.

REQ.	ITEM	PART NO.	DESCRIPTION	SYMBOL
		.064 THK.	THE TECHNICAL MATERIEL CORP. MAMARONECK. NEW YORK	
		STOCK SIZE		
		ALUMINUM	BRACKET, COIL SUPPORT	
		MATERIAL	TR-110	
		WEIGHT PER PC.		
		52 S H32		
		TYPE & TEMPER	P.B. 3-17-55	
			DRAWN	ELEC. DES. APP.
			CHECKED	FINAL APPROVAL
		HEAT TREAT. SPEC.		
		FINISH & SPEC. NO.	MS-628	A

ISSUE	ITEM	CHANGED FROM	DATE	CN. NO.	DRAFTS	CHECKER	ENG. APP.
A	1	S404 IRIDITE WAS S101 CAUSTIC DIP	12-7 59	1001	JP		EMN
TOLERANCES		SCALE					
ALL OTHERS	DEC. DIM. ± FRAC. DIM. ± 1/64 ANGULAR DIM. ±	DRILL, PUNCH, COMMERCIAL STOCK SIZES AND MANUFACTURERS TOLERANCES ARE NOT INCLUDED.					

IF IT IS FOUND DESIRABLE TO CHANGE ANY TOLERANCE OR OTHER DETAIL SPECIFIED ON THIS DRAWING NOTIFY THE PURCHASER PROMPTLY.

MS-629 C

MAXIMUM ALLOWABLE TOLERANCES HAVE BEEN DETERMINED AND DEVIATIONS WILL BE CAUSE FOR REJECTION. REMOVE ALL BURRS AND SHARP EDGES

REQ. PER UNIT

USED ON

MODEL

PROJECT NO.

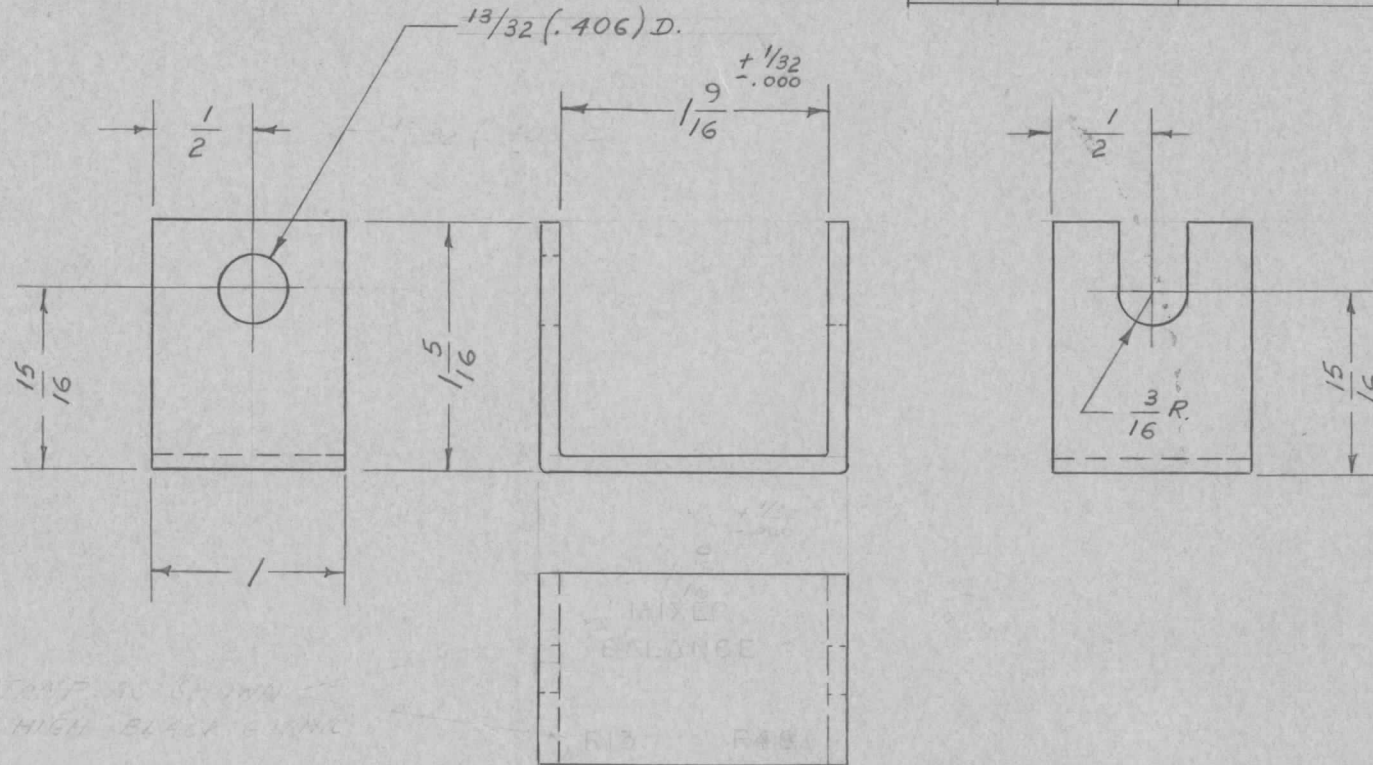
ASS'Y. NO.

DATE

1

XFK

3-17-55



REF: LD-957(1).

REQ.	ITEM	PART NO.	DESCRIPTION	SYMBOL
			.081 THK.	
			STOCK SIZE	
			ALUMINUM	
			52 S-H32	
			TYPE & TEMPER	
			HEAT TREAT. SPEC.	
			FINISH & SPEC. NO.	
			THE TECHNICAL MATERIEL CORP.	
			MAMARONECK. NEW YORK	
			BRACKET, BALANCE CONTROLS	
			PPB.	
			BB	
			WJ	
			DRAWN	
			ELEC. DES. APP.	
			MECH. DES. APP.	
			CHECKED	
			FINAL APPROVAL	
			MS-629	C

ISSUE	ITEM	CHANGED FROM	DATE	CN. NO.	DRAFTS	CHECKER	ENG. APP.
C	1	MIXER BALANCE RISE R48 STAMPING, DELETED	6-23-54	5127	M.A.G.	RLU	SPM
B	1	S404 - IRIDITE WAS S101 - CAUSTIC DIP	12-7-54	1001	JP		EMN
A	1	STAMPING ADDED	4-11-55	1	P.B.	JAL	WJ

TOLERANCES

SCALE

ALL OTHERS

DEC. DIM. ±
FRAC. DIM. ± 1/64
ANGULAR DIM. ±

DRILL, PUNCH, COMMERCIAL STOCK SIZES AND MANUFACTURERS TOLERANCES ARE NOT INCLUDED.

S404-IRIDITE

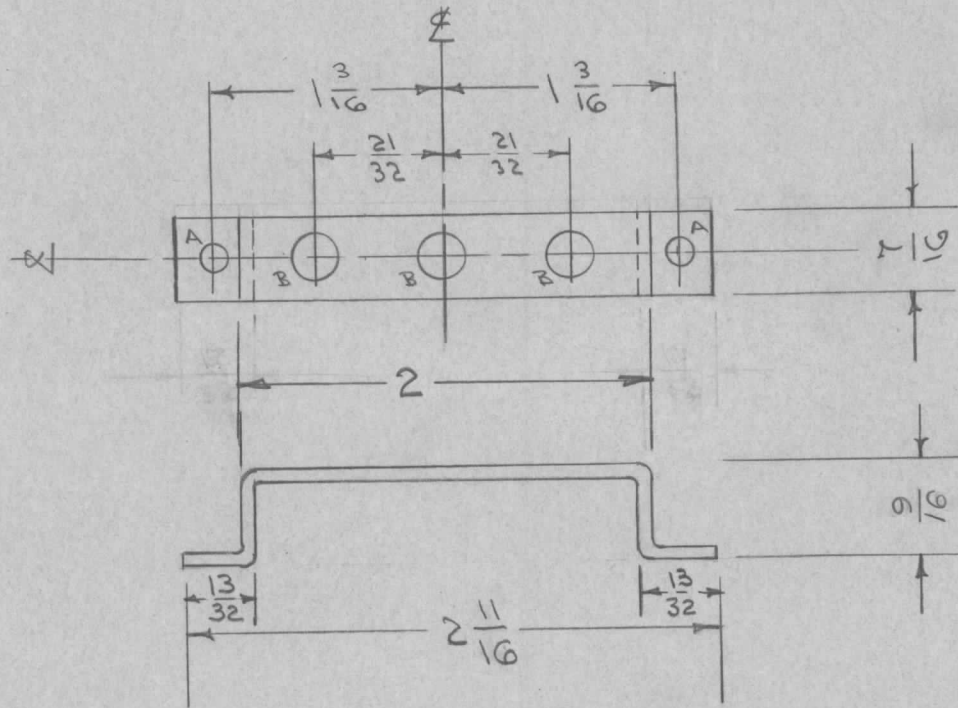
FINISH & SPEC. NO.

IF IT IS FOUND DESIRABLE TO CHANGE ANY TOLERANCE OR OTHER DETAIL SPECIFIED ON THIS DRAWING NOTIFY THE PURCHASER PROMPTLY.

MS-635 D

MAXIMUM ALLOWABLE TOLERANCES HAVE BEEN DETERMINED AND DEVIATIONS WILL BE CAUSE FOR REJECTION. REMOVE ALL BURRS AND SHARP EDGES

REQ. PER UNIT	USED ON			
	MODEL	PROJECT NO.	ASS'Y. NO.	DATE
2	GPR	297		4-1-55



A - 5/32 (.156) D. 2 REQ.
 B - 17/64 (.265) D. 3 " "

BLANK SIZE
 3 7/16 x 7/16

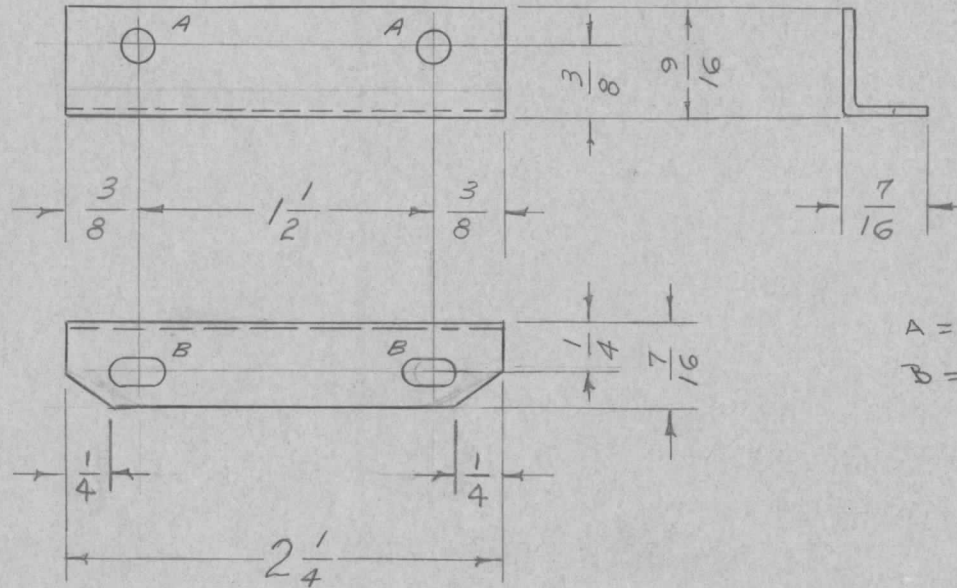
ISSUE	ITEM	CHANGED FROM	DATE	CN. NO.	DRAFTS	CHECKER	ENG. APP.	REQ.	ITEM	PART NO.	DESCRIPTION	SYMBOL	
D	1	5404- IRIDITE WAS 5131 - CAUSTIC DIP	12-7 59	1001	P		EMN		.064		THE TECHNICAL MATERIEL CORP.		
C	1	'B' HOLE WAS Y4 (250)	11/11/55	3	PB	ESS	WE		STOCK SIZE		MAMARONECK. NEW YORK		
B	1	9/16 WAS 1/2	9-8-55	2	PB	ESS	WE		ALUMINUM	#	BRACKET, OSC. TRIMMER		
A	1	13/32 WAS 7/16	4/7/55	1	ESS	##	G.T.O		MATERIAL	WEIGHT PER PC.	GPR		
									52S H32		CDD-4-1-55	##	
									TYPE & TEMPER		DRAWN	ELEC. DES. APP.	MECH. DES. APP.
									HEAT TREAT. SPEC.		G.T.O		
									FINISH & SPEC. NO.		CHECKED	FINAL APPROVAL	
												MS-635	D

IF IT IS FOUND DESIRABLE TO CHANGE ANY TOLERANCE OR OTHER DETAIL SPECIFIED ON THIS DRAWING NOTIFY THE PURCHASER PROMPTLY.

MAXIMUM ALLOWABLE TOLERANCES HAVE BEEN DETERMINED AND DEVIATIONS WILL BE CAUSE FOR REJECTION. REMOVE ALL BURRS AND SHARP EDGES

MS-642 A

REQ. PER UNIT	USED ON			
	MODEL	PROJECT NO.	ASS'Y. NO.	DATE
2	XFK		A-627	4-21-55



A = $\frac{1}{64}$ (.171) D, 2 HOLES
 B = $\frac{9}{64} \times \frac{9}{32}$ SLOTS, 2 SLOTS

REQ.	ITEM	PART NO.	DESCRIPTION	SYMBOL
		.051	THE TECHNICAL MATERIEL CORP. MAMARONECK, NEW YORK	
		STOCK SIZE		
		ALUMINUM	BRACKET, 200KC OVEN	
		MATERIAL		
		WEIGHT PER PC.		
A	1	5052 H32		
		TYPE & TEMPER	PB 4-21-55	
ISSUE	ITEM	CHANGED FROM	DRAWN	ELEC. DES. APP.
			FAIDe	
TOLERANCES		SCALE	CHECKED	FINAL APPROVAL
ALL OTHERS	DEC. DIM. \pm FRAC. DIM. $\pm \frac{1}{64}$ ANGULAR DIM. \pm	DRILL, PUNCH, COMMERCIAL STOCK SIZES AND MANUFACTURERS TOLERANCES ARE NOT INCLUDED.	MS-642 A	
		5404-IRIDITE		
		FINISH & SPEC. NO.		

DATE	CN. NO.	DRAFTS	CHECKER	ENG. APP.
12-7 59	1001	P		EMN

DATE	CN. NO.	DRAFTS	CHECKER	ENG. APP.

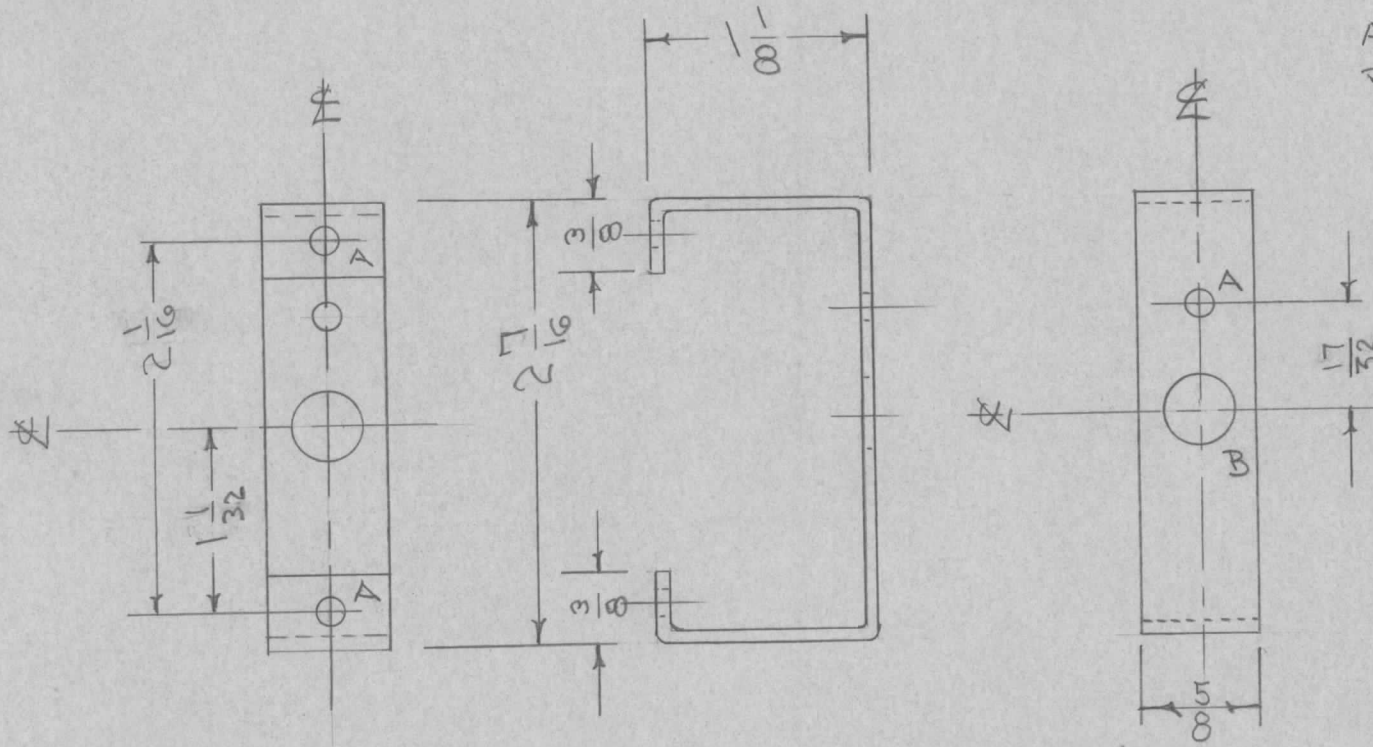
IF IT IS FOUND DESIRABLE TO CHANGE ANY TOLERANCE OR OTHER DETAIL SPECIFIED ON THIS DRAWING NOTIFY THE PURCHASER PROMPTLY.

MAXIMUM ALLOWABLE TOLERANCES HAVE BEEN DETERMINED AND DEVIATIONS WILL BE CAUSE FOR REJECTION. REMOVE ALL BURRS AND SHARP EDGES

MS-652

A

REQ. PER UNIT	USED ON			
	MODEL	PROJECT NO.	ASS'Y. NO.	DATE
1	FSS		A-1027	6-15-55



A - 5/32 (.156) D. 3 REQ.
 B - 3/8 (.375) D. 1 "

BLANK SIZE
 5 1/8 x 5/8

A	1	S404 - IRIDITE WAS S101 - CAUSTIC DIP	12-7 59	1001	P	EMN
ISSUE	ITEM	CHANGED FROM	DATE	CN. NO.	DRAFTS CHECKER	ENG. APP.

TOLERANCES		SCALE
ALL OTHERS	DEC. DIM. ± FRAC. DIM. ± 1/64 ANGULAR DIM. ±	DRILL, PUNCH, COMMERCIAL STOCK SIZES AND MANUFACTURERS TOLERANCES ARE NOT INCLUDED.

REQ.	ITEM	PART NO.	DESCRIPTION	SYMBOL
		.051	THE TECHNICAL MATERIEL CORP. MAMARONECK. NEW YORK	
		ALUMINUM	BRACKET, TIME BASE	
		52S H32	SWITCH FSS	
		TYPE & TEMPER	6-15-55	WDC
		HEAT TREAT. SPEC.	DB	WDC
		FINISH & SPEC. NO.	K2 A.J.J.	
			MS-652	A

IF IT IS FOUND DESIRABLE TO CHANGE ANY TOLERANCE OR OTHER DETAIL SPECIFIED ON THIS DRAWING NOTIFY THE PURCHASER PROMPTLY.

MS-654 A

MAXIMUM ALLOWABLE TOLERANCES HAVE BEEN DETERMINED AND DEVIATIONS WILL BE CAUSE FOR REJECTION. REMOVE ALL BURRS AND SHARP EDGES

REQ. PER UNIT

USED ON

MODEL

PROJECT NO.

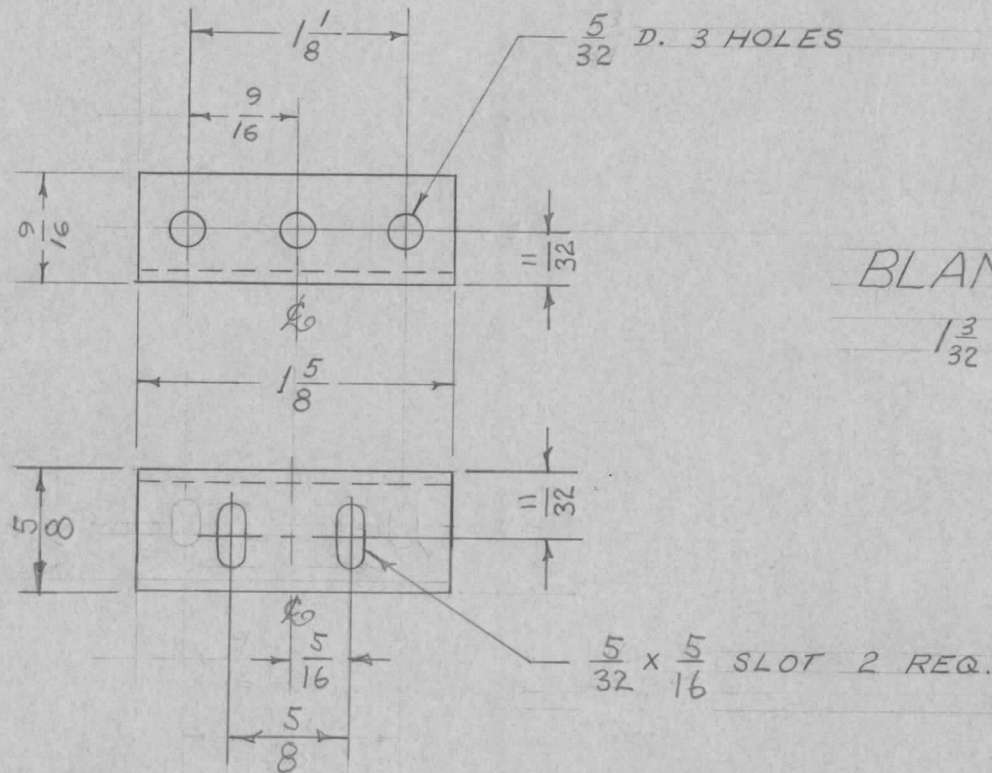
ASS'Y. NO.

DATE

2

FSS

6-16-55



REQ.	ITEM	PART NO.	DESCRIPTION	SYMBOL
	.051		THE TECHNICAL MATERIEL CORP.	
	STOCK SIZE		MAMARONECK. NEW YORK	
	ALUMINUM	#	RESISTOR BRACKET	
	MATERIAL	WEIGHT PER PC.		
	52 S-H32			
	TYPE & TEMPER		P.B. 6-16-55	BB
			DRAWN	ELEC. DES. APP.
			MECH. DES. APP.	
	HEAT TREAT. SPEC.		WZ	A.T.J.
	S404 IRIDITE		CHECKED	FINAL APPROVAL
	FINISH & SPEC. NO.		MS-654	A

A	1	S404-IRIDITE WAS S101-CAUSTIC DIP	12-7 59	1001	JP	EMN
ISSUE	ITEM	CHANGED FROM	DATE	CN. NO.	DRAFTS CHECKER	ENG. APP.

TOLERANCES

SCALE

ALL OTHERS

DEC. DIM. \pm
FRAC. DIM. \pm Y6A
ANGULAR DIM. \pm

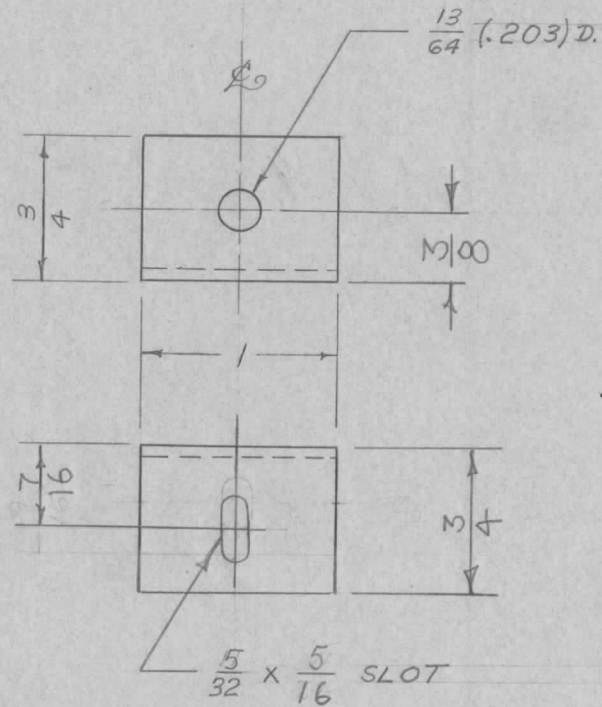
DRILL, PUNCH, COMMERCIAL STOCK
SIZES AND MANUFACTURERS
TOLERANCES ARE NOT INCLUDED.

IF IT IS FOUND DESIRABLE TO CHANGE ANY TOLERANCE OR OTHER DETAIL SPECIFIED ON THIS DRAWING NOTIFY THE PURCHASER PROMPTLY.

MS-655 A

MAXIMUM ALLOWABLE TOLERANCES HAVE BEEN DETERMINED AND DEVIATIONS WILL BE CAUSE FOR REJECTION. REMOVE ALL BURRS AND SHARP EDGES

REQ. PER UNIT	USED ON			
	MODEL	PROJECT NO.	ASS'Y. NO.	DATE
2	FSS			6-22-55

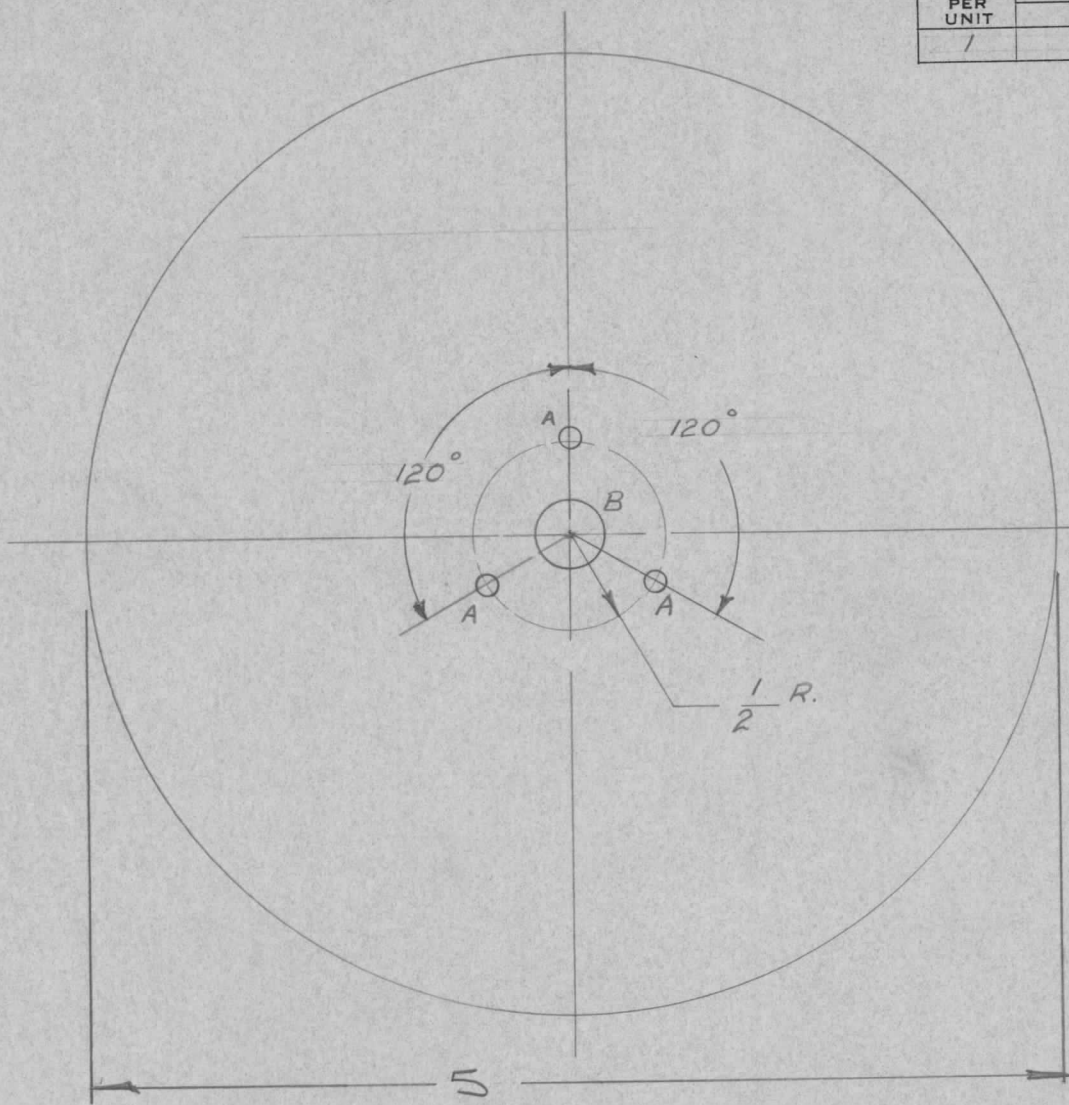


BLANK SIZE
 $\frac{13}{32} \times 1$

REQ.	ITEM	PART NO.	DESCRIPTION	SYMBOL
		.051	THE TECHNICAL MATERIEL CORP.	
		STOCK SIZE	MAMARONECK. NEW YORK	
	ALUMINUM	#	RESISTOR SUPPORT, SINGLE	
	MATERIAL	WEIGHT PER PC.	FSS	
		52 S - H 32		
		TYPE & TEMPER	PB 6-22-55	203
		#	DRAWN	ELEC. DES. APP. MECH. DES. APP.
		HEAT TREAT. SPEC.	7/12/55	KZ A.J.J.
		FINISH & SPEC. NO.	CHECKED	FINAL APPROVAL
				MS-655 A

A	1	S404- IRIDITE WAS S101- CAUSTIC DIP	12-7 59	1001	VP		EMN
ISSUE	ITEM	CHANGED FROM	DATE	CN. NO.	DRAFTS	CHECKER	ENG. APP.
TOLERANCES			SCALE				
ALL OTHERS	DEC. DIM. \pm FRAC. DIM. $\pm \sqrt[64]$ ANGULAR DIM. \pm		DRILL, PUNCH, COMMERCIAL STOCK SIZES AND MANUFACTURERS TOLERANCES ARE NOT INCLUDED.				

REQ. PER UNIT	USED ON			MS-657
	MODEL	ASS'Y. NO.	DATE	
1	FSS		6-24-55	



A - $\frac{1}{8}$ (.125) D. 3 HOLES
 B - $\frac{5}{16}$ (.312) D. 1 HOLE

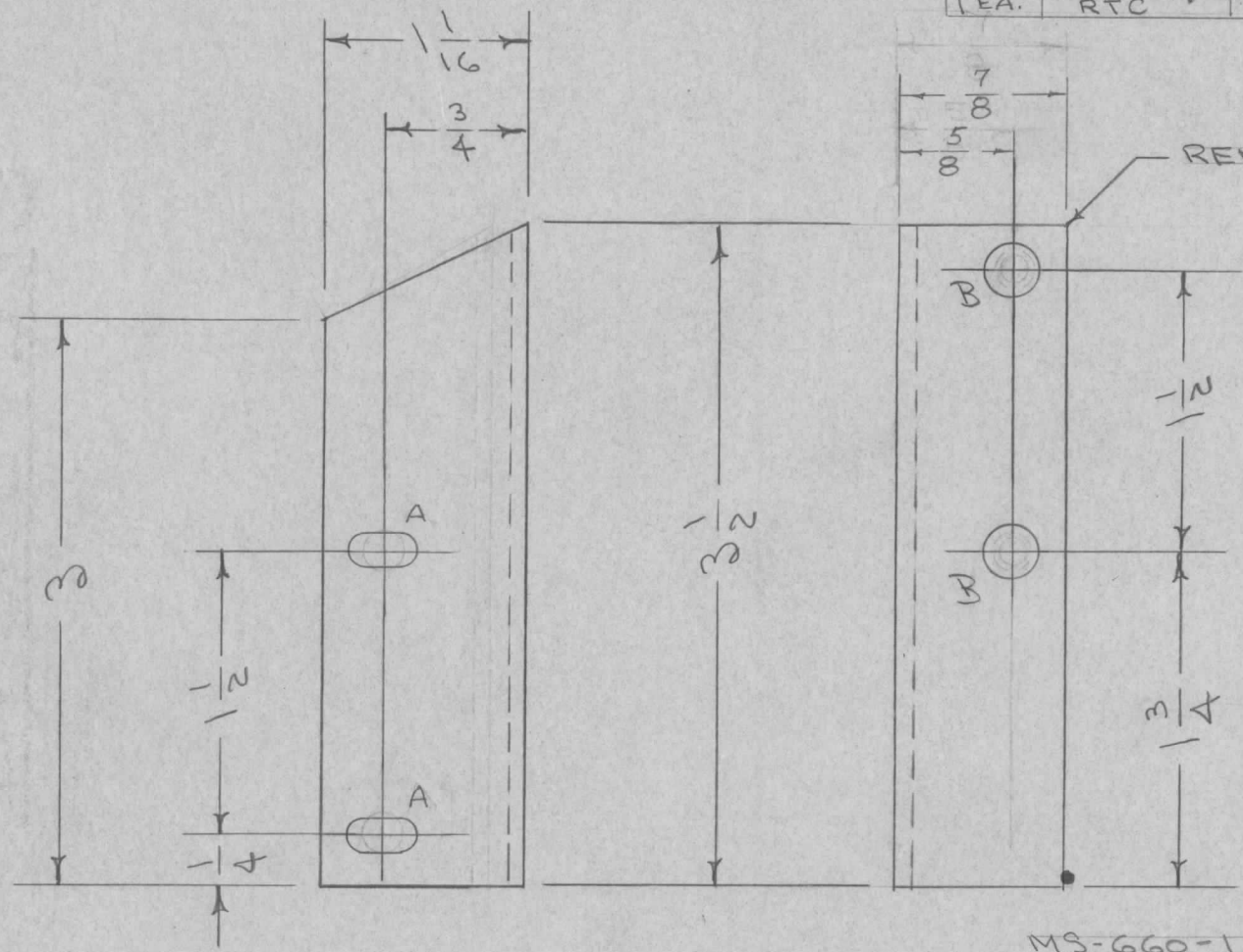
NOTE:
 OUTSIDE DIAMETER OF DIAL
 MUST BE CONCENTRIC TO BORE
 WITHIN .0015 F.I.R.

RF: TMC # LD-226

REF: ACKERMAN ENGRAVERS # AE-501 TMC # LD-226

								REQ. ITEM	PART NO.	DESCRIPTION	SYMBOL	
									.064	THE TECHNICAL MATERIEL CORP. MAMARONECK. NEW YORK DIAL BLANK FSS		
									STOCK SIZE			
									ALUMINUM			
									MATERIAL			
ISSUE	ITEM	CHANGED FROM	DATE	CH. NO.	DRAFTS	CHECKER	ENG. APP.	24 ST.	#	DRAWN: <i>PRB</i> CHECKED: <i>JAL</i> FINAL APPROVAL: <i>KZ A.T.J.</i>		
TOLERANCES			SCALE:					TYPE & TEMPER	HEAT TREAT. SPEC.	DRAWN: <i>ZB</i> CHECKED: <i>WZ</i> FINAL APPROVAL: <i>MS-657</i>		
DEC. DIM. \pm FRAC. DIM. $\pm \frac{1}{64}$ ANGULAR DIM. $\pm \frac{1}{2}^\circ$			MAXIMUM ALLOWABLE TOLERANCES HAVE BEEN DETERMINED AND ANY DEVIATIONS WILL BE CAUSE FOR REJECTION. REMOVE ALL BURRS AND SHARP EDGES					FINISH & SPEC. NO.		ELEC. DES. APP.	MECH. DES. APP.	

REQ. PER UNIT	USED ON			MS-660	G
	MODEL	ASS'Y. NO.	DATE		
1 EA.	GPR(S)		12-19-55		
1 EA.	RTC		1-13-56		



A - 13/64 X 13/32 SLOT 2 REQ.
 B - 9/32 D 2 HOLES

UNLESS OTHERWISE SPECIFIED DIMENSIONS ARE IN INCHES AND INCLUDE CHEMICALLY APPLIED OR PLATED FINISHES		
DECIMALS	TOLERANCES	FRACTIONS
.X ± .05		± 1/64
.XX ± .01		ANGLES
.XXX ± .005		± 0° 30'

CUT HERE
 GUARANTEED
 2-66

MS-660-1, LEFT SIDE - AS SHOWN
 MS-660-2, RIGHT " - OPPOSITE BEND

G	1	5404 - IRIDITE WAS S101 CAUSTIC DIP	12-7 59	1001	P		EMN	REQ. ITEM	PART NO.	DESCRIPTION	SYMBOL	
F	1	"A" WAS 11/64 X 11/32	3-2-56	6	B	JAR	WLC		.081	THE TECHNICAL MATERIEL CORP. MAMARONECK, NEW YORK	BRACKET, CABINET	
E	2	9/32 D. WAS 8-32 TAP	1-13-56	5	P3	JAR	WLC		STOCK SIZE			
D	1	COMPLETE REVISION	12/10/55	4	COO	HH	WLC		ALUMINUM			
ISSUE ITEM CHANGED FROM			DATE	CH. NO.	DRAFTS	CHECKER	ENG. APP.	MATERIAL				
TOLERANCES			SCALE:				S2S H32		EDD. 12/10/55	JAR	G.T.O.	
DEC. DIM. ± FRAC. DIM. ± ANGULAR DIM. ±			MAXIMUM ALLOWABLE TOLERANCES HAVE BEEN DETERMINED AND ANY DEVIATIONS WILL BE CAUSE FOR REJECTION. REMOVE ALL BURRS AND SHARP EDGES				TYPE & TEMPER HEAT TREAT. SPEC.		DRAWN	CHECKED	FINAL APPROVAL	
							S404 IRIDITE		HH	WLC	MS-660	G
							FINISH & SPEC. NO.		ELEC. DES. APP.	MECH. DES. APP.		

IF IT IS FOUND DESIRABLE TO CHANGE ANY TOLERANCE OR OTHER DETAIL SPECIFIED ON THIS DRAWING NOTIFY THE PURCHASER PROMPTLY.

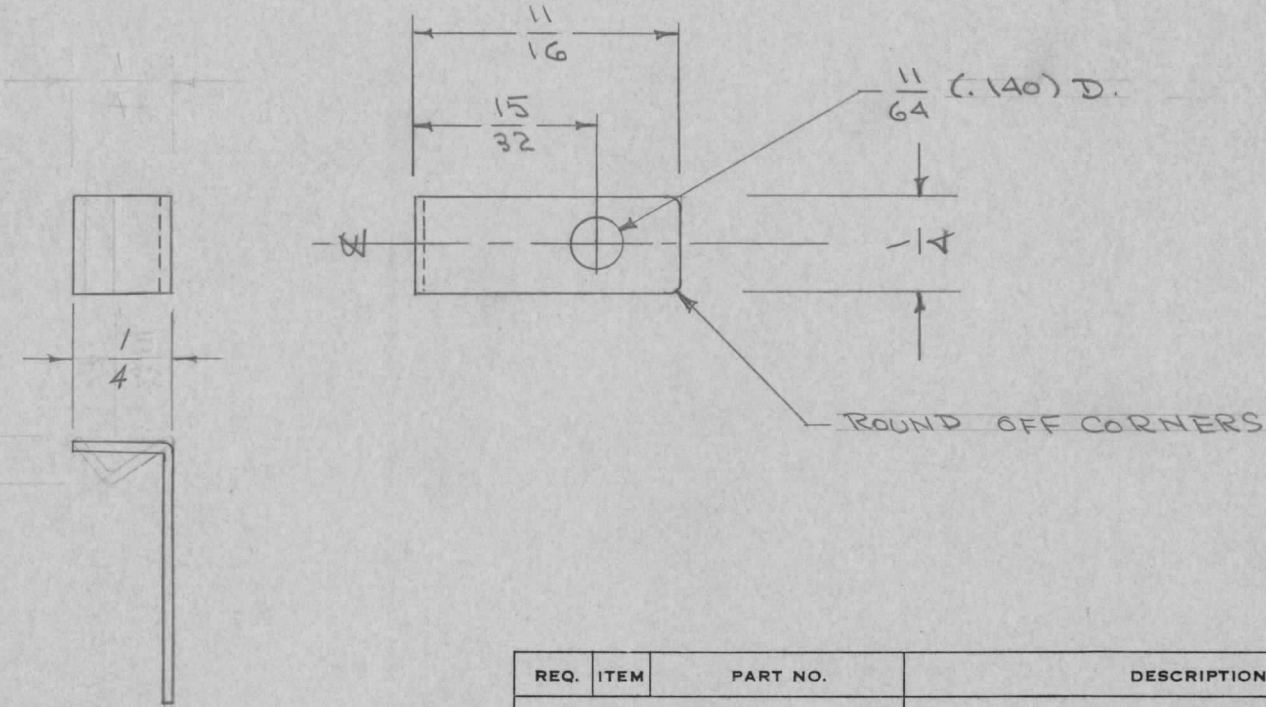
MS-665 A

MAXIMUM ALLOWABLE TOLERANCES HAVE BEEN DETERMINED AND DEVIATIONS WILL BE CAUSE FOR REJECTION. REMOVE ALL BURRS AND SHARP EDGES

REQ. PER UNIT	USED ON			
	MODEL	PROJECT NO.	ASS'Y. NO.	DATE
2	GPR			7-19-55

BLANK SIZE

$\frac{15}{16} \times \frac{1}{4}$



REQ.	ITEM	PART NO.	DESCRIPTION	SYMBOL
	.020		THE TECHNICAL MATERIEL CORP.	
	STOCK SIZE		MAMARONECK, NEW YORK	
	BRASS	— II —	SPRING LOCK, SLIDE SWITCH	
	MATERIAL	WEIGHT PER PC.	G P R.	
	SPRING			
	TYPE & TEMPER		ORD. 7-19-55	
	II		DRAWN	ELEC. DES. APP. MECH. DES. APP.
	HEAT TREAT. SPEC.		JAHL	WJC
	II		CHECKED	FINAL APPROVAL
	FINISH & SPEC. NO.			MS-665 A

ISSUE	ITEM	CHANGED FROM	DATE	CN. NO.	DRAFTS	CHECKER	ENG. APP.
A	1	COMPLETE REVISION	7/19/55	1	M3	EDS	WJC

TOLERANCES		SCALE
ALL OTHERS	DEC. DIM. \pm FRAC. DIM. $\pm \frac{1}{64}$ ANGULAR DIM. \pm	DRILL, PUNCH, COMMERCIAL STOCK SIZES AND MANUFACTURERS TOLERANCES ARE NOT INCLUDED.

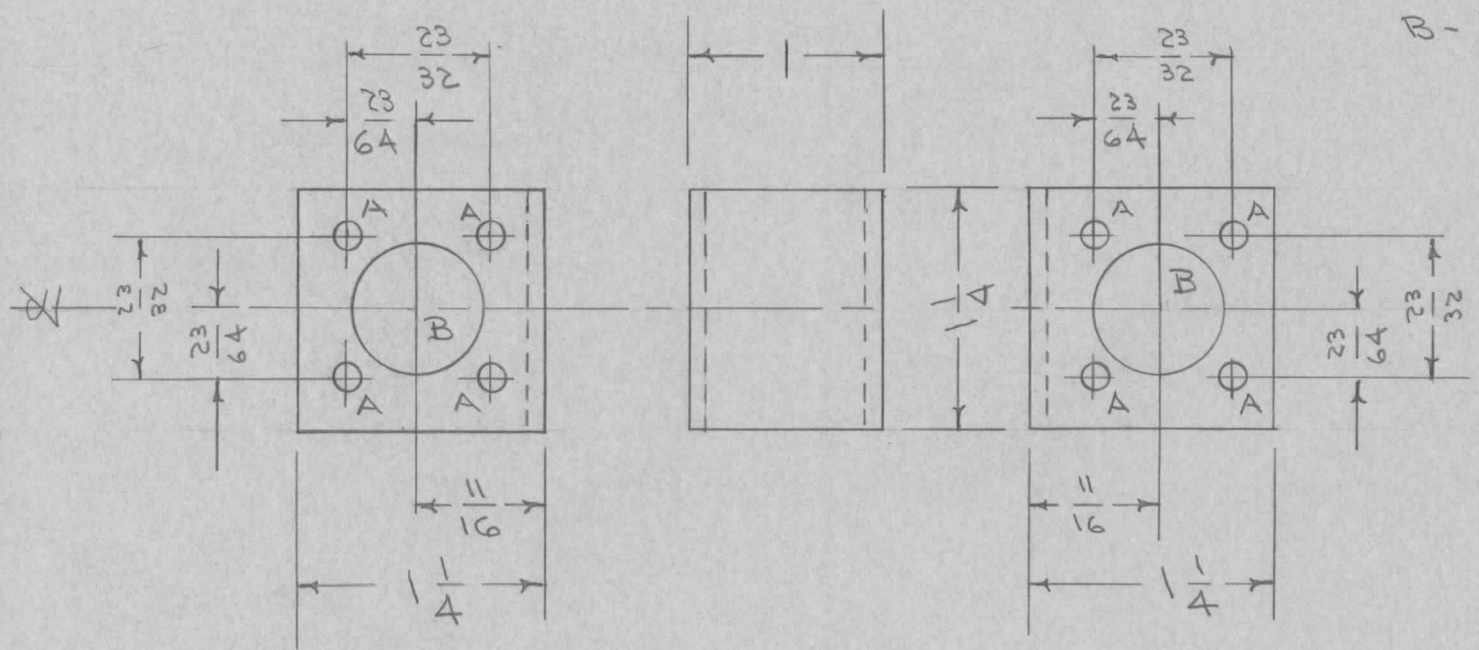
IF IT IS FOUND DESIRABLE TO CHANGE ANY TOLERANCE OR OTHER DETAIL SPECIFIED ON THIS DRAWING NOTIFY THE PURCHASER PROMPTLY.

MS-681 A

MAXIMUM ALLOWABLE TOLERANCES HAVE BEEN DETERMINED AND DEVIATIONS WILL BE CAUSE FOR REJECTION. REMOVE ALL BURRS AND SHARP EDGES

REQ. PER UNIT	USED ON			
	MODEL	PROJECT NO.	ASS'Y. NO.	DATE
1	AMC-6			8-29-55

A - 9/64 (.140) D. 8 HOLES
 B - 1/16 (.687) D. 2 "



REQ.	ITEM	PART NO.	DESCRIPTION	SYMBOL
		.081	THE TECHNICAL MATERIEL CORP.	
		STOCK SIZE	MAMARONECK. NEW YORK	
	ALUMINUM	#	BRACKET, COAX CONNECTOR	
	MATERIAL	WEIGHT PER PC.	AMC-6	
		52S H32	CDD. 8/29/55	WDC
		TYPE & TEMPER	DRAWN	ELEC. DES. APP. MECH. DES. APP.
		#	WDC	WDC
		HEAT TREAT. SPEC.	CHECKED	FINAL APPROVAL
		S404-IRIDITE		MS-681 A
		FINISH & SPEC. NO.		

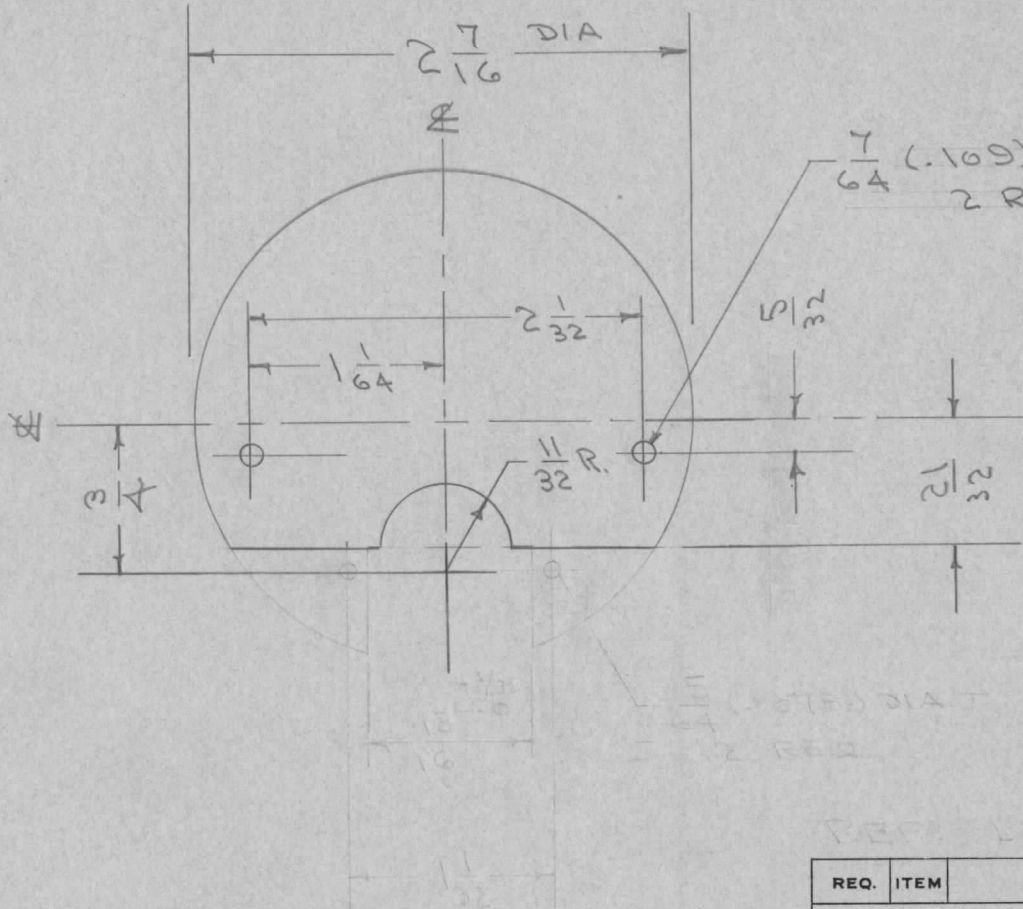
A	1	S404-IRIDITE WAS 5101-CAUSTIC DIP	12-7 59	1001	W	EMN	
ISSUE	ITEM	CHANGED FROM	DATE	CN. NO.	DRAFTS	CHECKER	ENG. APP.
TOLERANCES			SCALE				
ALL OTHERS	DEC. DIM. ± FRAC. DIM. ± 1/64 ANGULAR DIM. ±		DRILL, PUNCH, COMMERCIAL STOCK SIZES AND MANUFACTURERS TOLERANCES ARE NOT INCLUDED.				

IF IT IS FOUND DESIRABLE TO CHANGE ANY TOLERANCE OR OTHER DETAIL SPECIFIED ON THIS DRAWING NOTIFY THE PURCHASER PROMPTLY.

MS-682 A

MAXIMUM ALLOWABLE TOLERANCES HAVE BEEN DETERMINED AND DEVIATIONS WILL BE CAUSE FOR REJECTION. REMOVE ALL BURRS AND SHARP EDGES

REQ. PER UNIT	USED ON			
	MODEL	PROJECT NO.	ASS'Y. NO.	DATE
1	RSA-2			8-30-55
1	RSM-2			8-30-55



FOR TRIPLETT METER
MODEL 321-T TYPE B,
MODIFY MS-571 AS SHOWN.
(ADD 2, 7/64" HOLES)

NOTE: FOR SIMPSON METERS
USE MS-571.

REQ.	ITEM	PART NO.	DESCRIPTION	SYMBOL
		MS-571	THE TECHNICAL MATERIEL CORP. MAMARONECK, NEW YORK	
		STOCK SIZE	DIAL BLANK	
		MATERIAL	MODIFICATION	
		WEIGHT PER PC.		
		TYPE & TEMPER		
		HEAT TREAT. SPEC.		
		FINISH & SPEC. NO.		

ISSUE	ITEM	CHANGED FROM	DATE	CN. NO.	DRAFTS	CHECKER	ENG. APP.
A	1	DIM. REMOVED	8/30/55	1	COB	J. DeHoff	

TOLERANCES

SCALE

DRILL, PUNCH, COMMERCIAL STOCK SIZES AND MANUFACTURERS TOLERANCES ARE NOT INCLUDED.

ALL OTHERS

DEC. DIM. ±

FRAC. DIM. ± 1/64

ANGULAR DIM. ±

COB 8/30/55

DRAWN

ELEC. DES. APP.

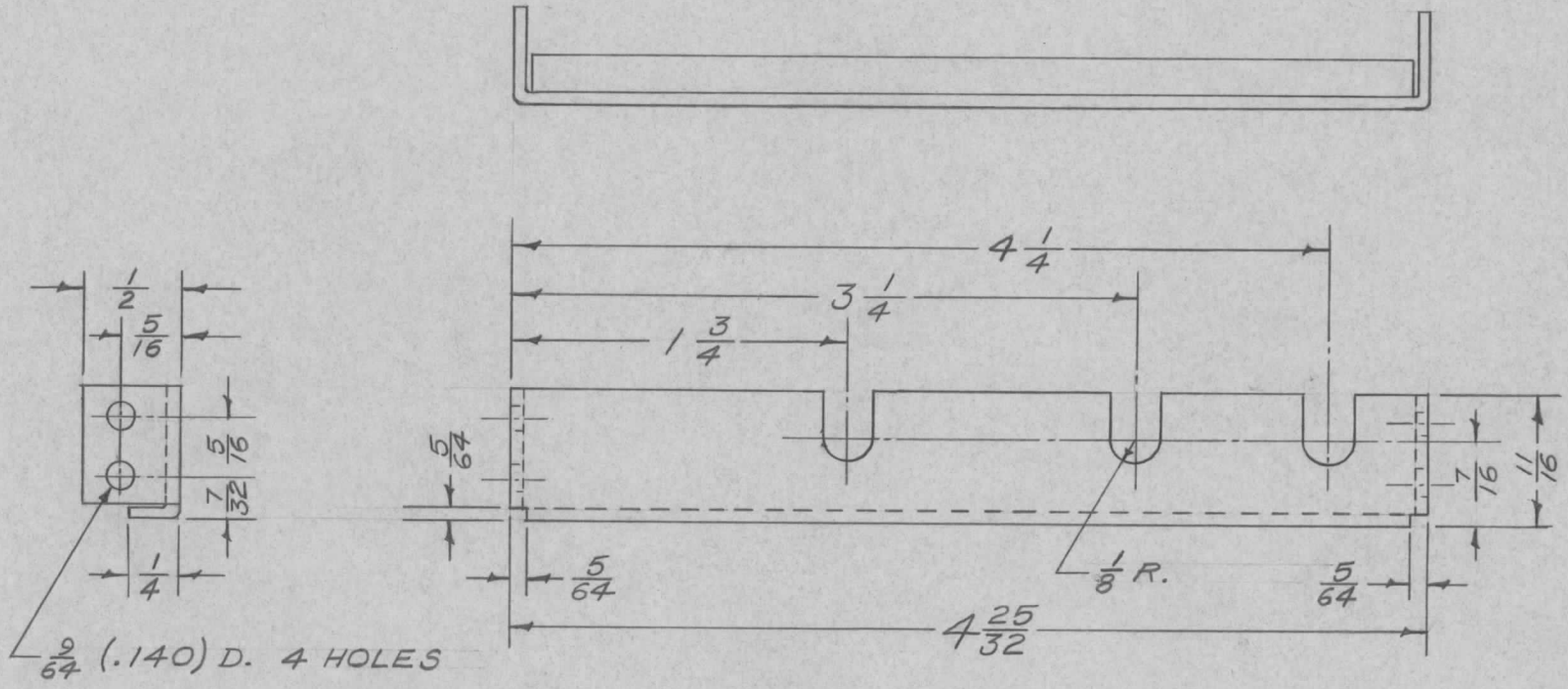
MECH. DES. APP.

CHECKED

FINAL APPROVAL

MS-682 A

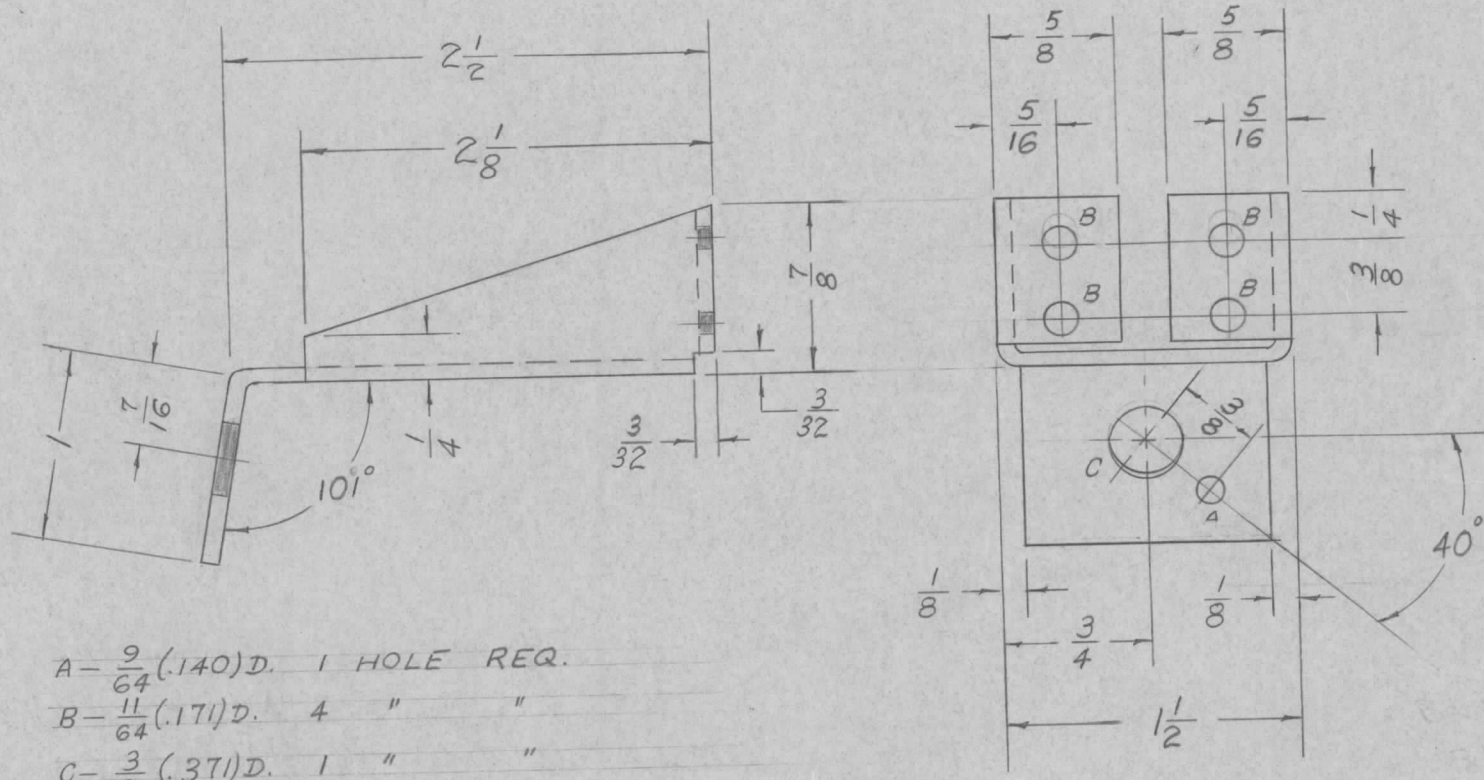
REQ. PER UNIT	USED ON			MS-695	C
	MODEL	ASS'Y. NO.	DATE		
1	RTF		10-30-56		



FLANK SIZE 27 3/32 X 5 19/32
 REF-LD-255 (STAMPING)

ISSUE	ITEM	CHANGED FROM	DATE	CH. NO.	DRAFTS	CHECKER	ENG. APP.	REQ. ITEM	PART NO.	DESCRIPTION	SYMBOL				
C	1	5404 - IRIDITE WAS 5101 - CAUSTIC DIP	12-7-59	1001	UP		EMN	.064		THE TECHNICAL MATERIEL CORP. MAMARONECK, NEW YORK					
B	1	Redrawn with dimension changes.	10/30/56	2	48	HAQ	WE	ALUMINUM		COIL SUPPORT BRACKET					
										MULTIPLIER CHASSIS GPT-750					
TOLERANCES			SCALE: Full					5052-H32	ff	4610-30-56	HAQ	WE			
DEC. DIM. ±			MAXIMUM ALLOWABLE TOLERANCES HAVE BEEN DETERMINED AND ANY DEVIATIONS WILL BE CAUSE FOR REJECTION. REMOVE ALL BURRS AND SHARP EDGES					TYPE & TEMPER	HEAT TREAT. SPEC.	DRAWN	CHECKED	FINAL APPROVAL			
FRAC. DIM. ± 1/64								5404-IRIDITE			WE				MS-695
ANGULAR DIM. ±								FINISH & SPEC. NO.	ELEC. DES. APP.	MECH. DES. APP.					C

REQ. PER UNIT	USED ON			MS-696	B
	MODEL	ASS'Y. NO.	DATE		
1	RTF		9-23-55		
1	RTF-2	MULT.	11-20-58		



A - $\frac{9}{64}$ (.140) D. 1 HOLE REQ.
 B - $\frac{11}{64}$ (.171) D. 4 " "
 C - $\frac{3}{8}$ (.375) D. 1 " "

ISSUE	ITEM	CHANGED FROM	DATE	CH. NO.	DRAFTS	CHECKER	ENG. APP.	REQ. ITEM	PART NO.	DESCRIPTION	SYMBOL
										THE TECHNICAL MATERIEL CORP. MAMARONECK, NEW YORK	
									.081 STOCK SIZE	BRACKET, - R.F. OUTPUT SWITCH	
									ALUMINUM	MULTIPLIER CHASSIS GPT-750	
									MATERIAL		
									52S-H32	11-20-58	
									TYPE & TEMPER	CHECKED	FINAL APPROVAL
									HEAT TREAT. SPEC.		
									5404 IRIDITE		MS-696 B
									FINISH & SPEC. NO.	ELEC. DES. APP.	MECH. DES. APP.

TOLERANCES
 DEC. DIM. ±
 FRAC. DIM. ± $\frac{1}{64}$
 ANGULAR DIM. ± $\frac{1}{2}^\circ$

SCALE:
 MAXIMUM ALLOWABLE TOLERANCES HAVE BEEN DETERMINED AND ANY DEVIATIONS WILL BE CAUSE FOR REJECTION.
 REMOVE ALL BURRS AND SHARP EDGES