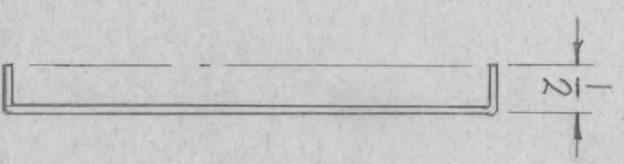
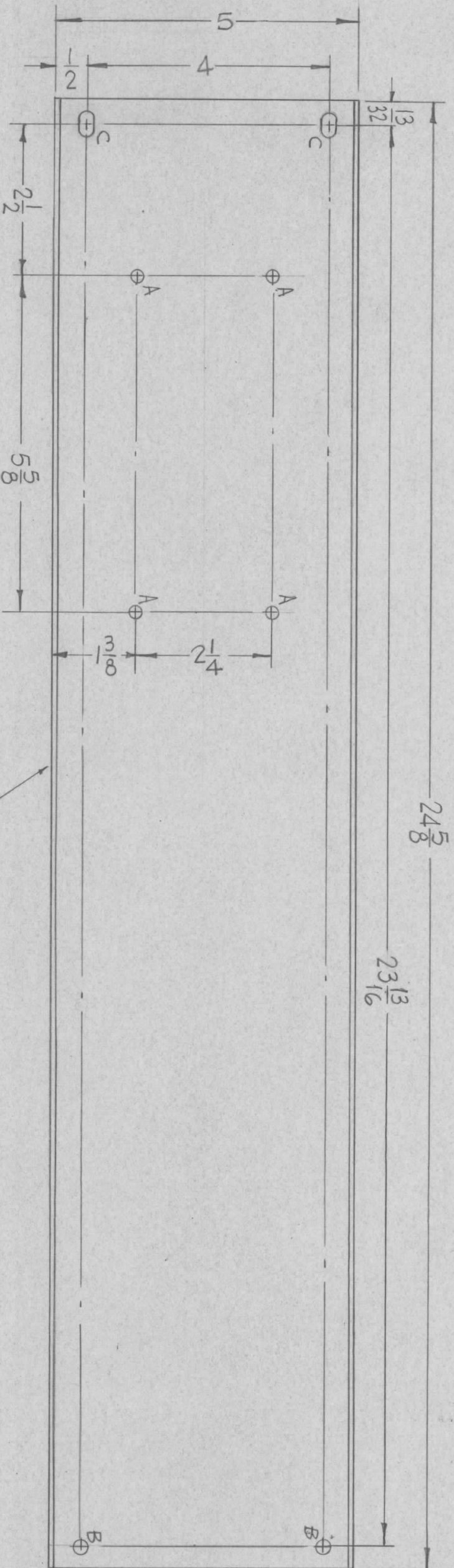


HOLES	DESCRIPTION	REQ.
A	13/64 DIA.	4
B	15/64 DIA.	2
C	1/32 X 3/8 SLOT	2

REVISIONS		DESCRIPTION	DATE	E.M.N. NO.	DRAFT	CHKD	APPD
X		EXP RELEASE	2-16-67				
Ø		ORIG RELEASE FOR PROD	4-6-67				



MARK TMC P/N (MS 6093-)  
1/8 HIGH GOTHIC W/LATEST  
REV. LETTER

- UNLESS OTHERWISE SPECIFIED:
1. USE MATERIAL THICKNESS FOR MAXIMUM RADIUS ON ALL BENDS
  2. ALL ANGULAR BENDS 90 DEGREES
  3. REMOVE ALL BURRS AND SHARP EDGES

QTY / UNIT	1	SBT-1KPA2	MODEL USED ON	ASS'Y NO.
		APPLICATION		
S401-451		CODE	S401-	
S401-		CODE	A	

NOTICE TO PERSONS RECEIVING THIS DRAWING  
THE TECHNICAL MATERIEL CORPORATION claims proprietary right in the material disclosed hereon. This drawing is issued in confidence for engineering information only and may not be reproduced or used to manufacture anything shown hereon without permission from THE TECHNICAL MATERIEL CORPORATION to the user. This drawing is loaned for mutual assistance and is subject to recall at any time.

UNLESS OTHERWISE SPECIFIED  
DIMENSIONS ARE IN INCHES  
AND INCLUDE CHEMICALLY APPLIED  
OR PLATED FINISHES

DECIMALS	X ± .05	TOLS.	FRACTIONS	1/64
	.XX ± .01		ANGLES	0° .30'
	.XXX ± .005			
MATERIAL	.081 THK ALUMINUM 5052-H32			
FINISH	5520 TEX VINYL PAINT			

REQ'D ITEM	PART NUMBER	DESCRIPTION	SYM.
F. BUDETTI		LIST OF MATERIAL	

THE TECHNICAL MATERIEL CORP.  
MAMARONECK, NEW YORK

PLATE, MTG. CONNECTOR BRKT.

FINAL APPROVAL	DATE	SIZE	CODE IDENT. NO.	DWG NO.	ISSUE
<i>[Signature]</i>	2/16/67	B	82679	MS6093	Ø
MECH. DES.	DATE	SCALE	1:2	SHEET	OF
<i>[Signature]</i>	2/16/67				
ELECT. DES.	DATE				
<i>[Signature]</i>					
CHECKED	DATE				
<i>[Signature]</i>					
DRAWN	DATE				
<i>[Signature]</i>	2-16-67				