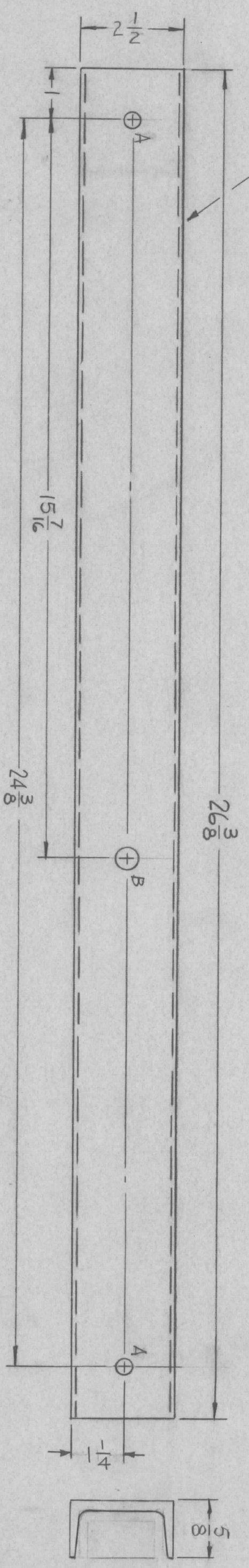


REVISIONS						
ZONE	LTR	DESCRIPTION	DATE	E.M.N. NO.	DRAFT	CHKD
	X	EXP. RELEASE	2-7-67			
	X1	MATERIAL WAS SOLD R. STEEL	221-67			
	X2	MTL. WAS 2 X 9/16 X 3/16 & CHG'D 14 7/16 TO 15 7/16	3/10/67		RME	
	Ø	ORIG RELEASE FOR PROD	4-6-67		Ø	CV

MARK TMC P/N MS6085-  
HIGH GOTHIC W/LATEST  
REV. LETTER.



HOLES:  
A - 15/64 DIA. (2REQ.)  
B - 7/16 DIA. (1REQ.)

QTY / UNIT	2	MODEL USED ON	SBT-1KPA2	ASS'Y NO.	
APPLICATION		CODE	S401-		
S401-451		CODE	A		

UNLESS OTHERWISE SPECIFIED  
DIMENSIONS ARE IN INCHES  
AND INCLUDE CHEMICALLY APPLIED  
OR PLATED FINISHES

DECIMALS      FRACTIONS  
X ± .05      1/64  
.XX ± .01      ANGLES  
.XXX ± .005      0° .30'

MATERIAL 2 1/2 X 5/8 X 3/16  
HOT ROLLED STEEL  
BAR SIZE CHANNEL  
FINISH  
SIDS CAD, PLATED

REQ'D ITEM	PART NUMBER	DESCRIPTION	SYM.
F. BUDETTI			
LIST OF MATERIAL			
THE TECHNICAL MATERIEL CORP. MAMARONECK, NEW YORK			
TRACK, SUPPORT			
SIZE	CODE IDENT. NO.	DWG NO.	ISSUE
B	82679	MS6085	Ø
SCALE	NONE	SHEET	OF

NOTICE TO PERSONS RECEIVING THIS DRAWING  
THE TECHNICAL MATERIEL CORPORATION claims proprietary right in the material disclosed hereon. This drawing is issued in confidence for engineering information only and may not be reproduced or used to manufacture anything shown hereon without permission from THE TECHNICAL MATERIEL CORPORATION to the user. This drawing is loaned for mutual assistance and is subject to recall at any time.