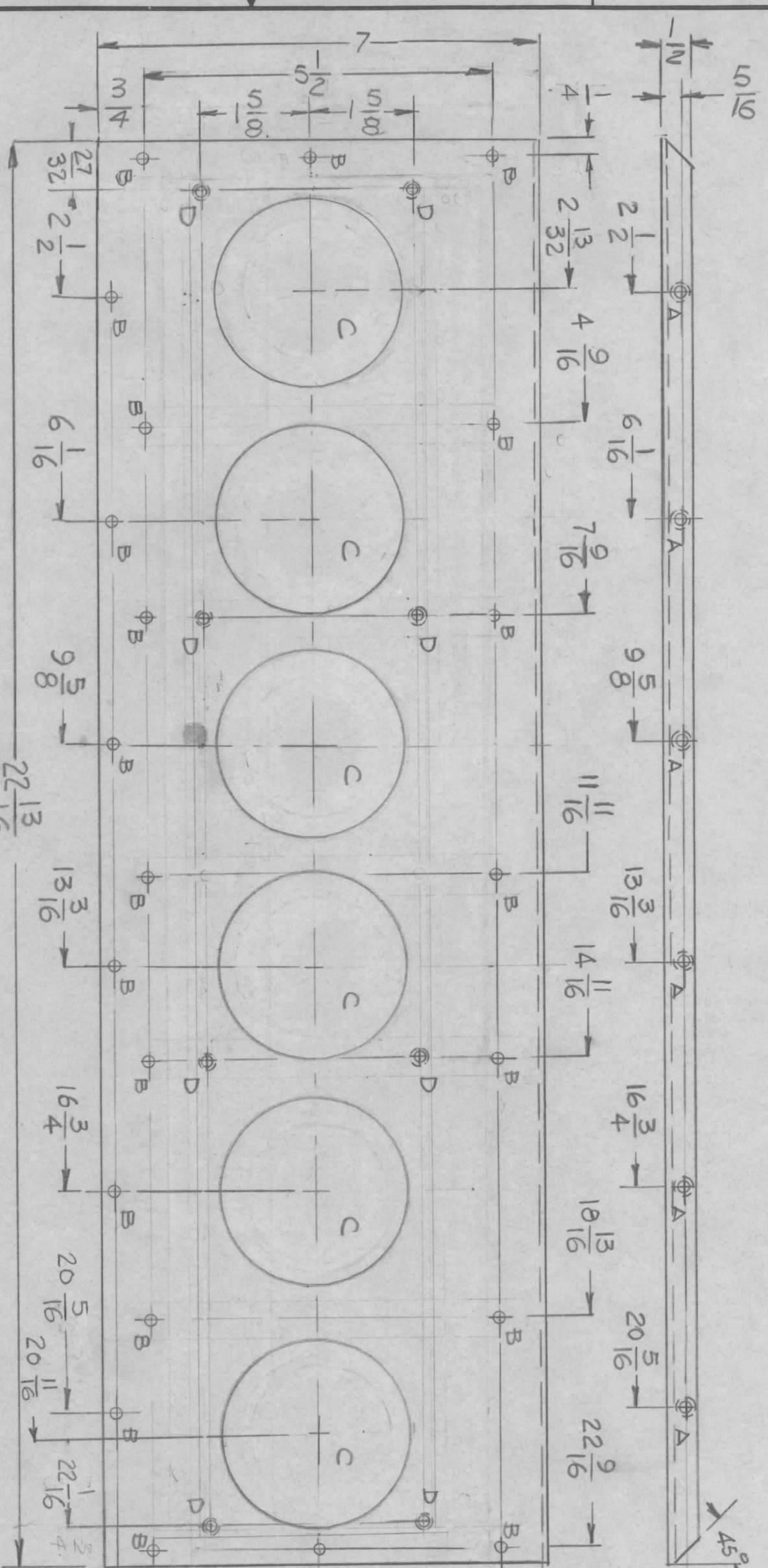


REVISIONS							
EM.N. NO.	DRAFT	CHKD	ZONE	LTR	DESCRIPTION	DATE	APPROVED
22008	G-DL			A	REDRAWN - DELETE SQUARE CUTOUT ADD "C" & "D" HOLES	11-9-81	



HOLES
 A-.191-.194 DIA G REQ
 B-.11/64 DIA 22 REQ
 C-.3" DIA 6 REQ
 D-.161-.164 DIA 8 REQ

TMC P/NO	DESCRIPTION
MS6071-1	AS SHOWN
MS6071-2	EXCLUDE "C" & "D" HOLES TURN LIP OPP. DIRECTION

REQ'D	ITEM	PART NUMBER	DESCRIPTION	SYM.
B	2	NT129-440-4	NUT, ROUND	D
6	1	NT129-632-4	NUT, ROUND	A

LIST OF MATERIAL
 THE TECHNICAL MATERIEL CORP.
 MAMARONECK, NEW YORK

PLATE, TOP & BOTTOM

QTY / UNIT	MODEL USED ON	ASS'Y. NO.
1 EA	LPFA-40K	
APPLICATION		
CODE		

DECIMALS	FRACTIONS	TOLS.	ANGLES
.X ± .05	1/64		
.XX ± .01			0° .30'
.XXX ± .005			

MATERIAL .064 THK
 ALUM. 5052-H32

FINISH 5520 TEX. PAINT
 OUTSIDE ONLY

SIZE	CODE IDENT. NO.	DWG NO.	ISSUE
B	82679	MS 6071	A

SCALE 1:2 SHEET OF

- UNLESS OTHERWISE SPECIFIED:
- USE MATERIAL THICKNESS FOR MAXIMUM RADIUS ON ALL BENDS.
 - ALL ANGULAR BENDS 90 DEGREES.
 - REMOVE ALL BURRS AND SHARP EDGES.
 - MOUNT INSERTS AFTER FINISHING.

NOTICE TO PERSONS RECEIVING THIS DRAWING
 THE TECHNICAL MATERIEL CORPORATION claims proprietary right in the material disclosed hereon. This drawing is issued in confidence for engineering information only and may not be reproduced or used to manufacture anything shown hereon without permission from THE TECHNICAL MATERIEL CORPORATION to the user. This drawing is loaned for mutual assistance and is subject to recall at any time.