

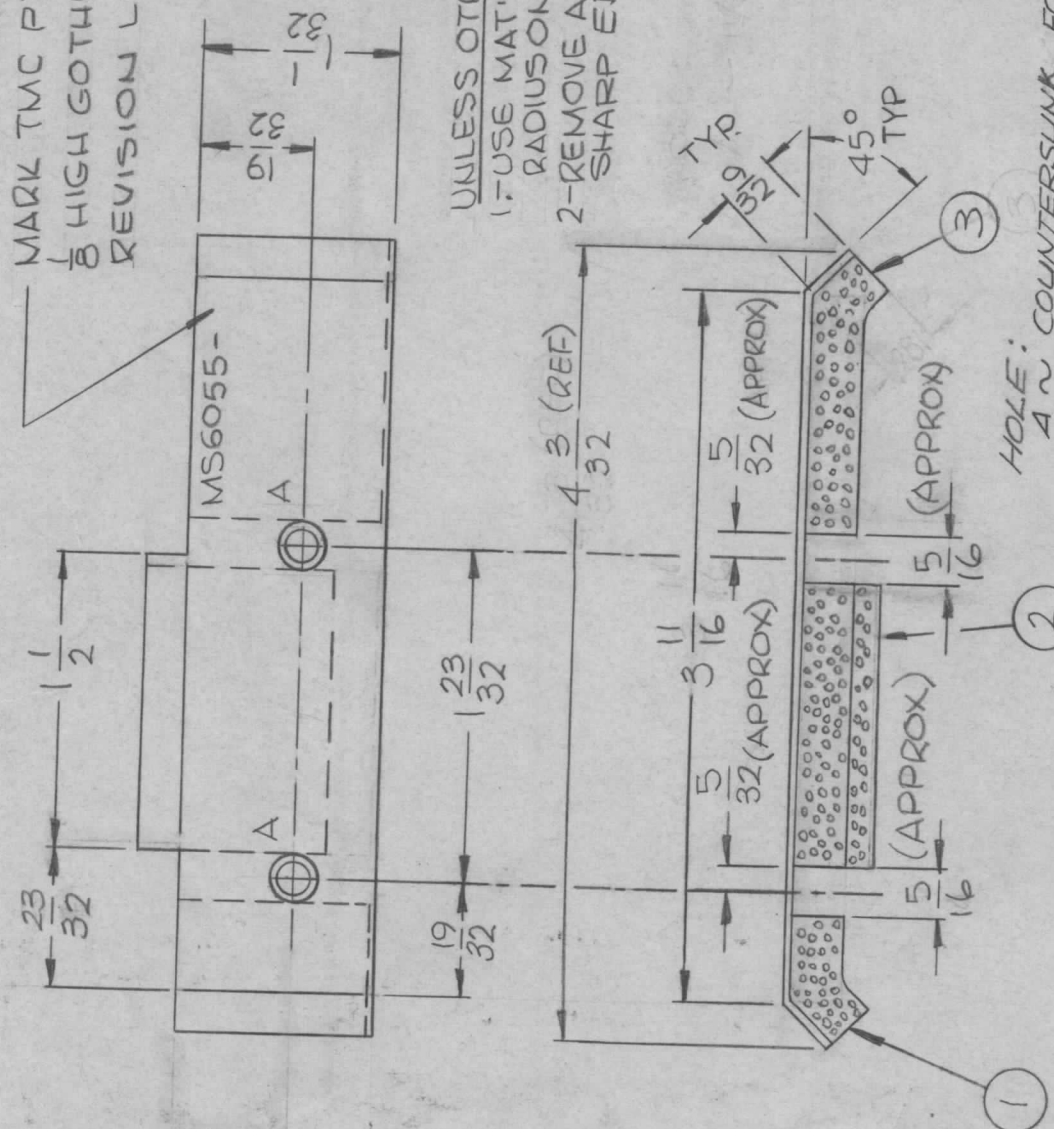
APPLICATION

QTY	MODEL USED ON	ASSY NO.	LTR
1	VOX-7	A4512	X
1	MMX-()	A4212	Ø
1	HOLE		A
1	A-HOLE		B

REVISIONS

DESCRIPTION	DATE	E.M.N. NO	DRAFT	CHKD	APPD
EXPERIMENTAL RELEASE	11/17/67		WTW		
ORIG. RELEASE FOR PROD.	6-26-67	Ø	RG		
MOD HFSR-4 DELETED	10/24/67	CC	8/8/67		
MOD MMX-() WAS MMX-1					
A-HOLE LEG. WAS 1/64 DIA.	12/2/68	19/31	K.H.		

MARK TMC PT/NO
 1/8 HIGH GOTHIC W/LATEST
 REVISION LETTER



UNLESS OTHERWISE SPEC.
 1-USE MAT'L THK FOR MAX
 RADIUS ON ALL BENDS.
 2-REMOVE ALL BURRS &
 SHARP EDGES.

HOLE:
 A ~ COUNTERSUNK FOR 6-32 F.M.S.
 .144 DIA. & 82° C SINK TO .284 DIA.

REQ'D	ITEM	PART NUMBER	DESCRIPTION	SYM.
1	3	TAIII-2-8-1.50A	TAPE, URETHANE	
1	2	TAIII-2-8-1.43A	TAPE, URETHANE	
1	1	TAIII-2-8-0.62A	TAPE, URETHANE	
			O. POSE	

LIST OF MATERIAL SK3213MS67

THE TECHNICAL MATERIEL CORP.
 MAMARONECK, NEW YORK

CLAMP, CAPACITOR

FINAL APPROVAL	DATE
MECH. DES.	DATE
ELECT. DES.	DATE
CHECKED	DATE
DRAWN	DATE

UNLESS OTHERWISE SPECIFIED
 DIMENSIONS ARE IN INCHES
 AND INCLUDE CHEMICALLY APPLIED
 OR PLATED FINISHES

DECIMALS FRACTIONS
 .X ± .05 TOLS. 1/64
 .XX ± .01 ANGLES 0°-30'
 .XXX ± .005

MATERIAL .051 THICK
 ALUMINUM, 5052-H32

FINISH
 S404-YELIRIDITE
 S401-451

NOTICE TO PERSONS RECEIVING THIS DRAWING
 THE TECHNICAL MATERIEL CORPORATION claims proprietary right in the material
 disclosed hereon. This drawing is issued in confidence for engineering information only
 and may not be reproduced or used to manufacture anything shown hereon without
 permission from THE TECHNICAL MATERIEL CORPORATION to the user. This drawing is
 loaned for mutual assistance and is subject to recall at any time.

SIZE	CODE IDENT. NO.	DWG NO.	ISSUE
A	82679	MS6055	B
SCALE 1:1		SHEET	OF

M/L MLD-6/26/67