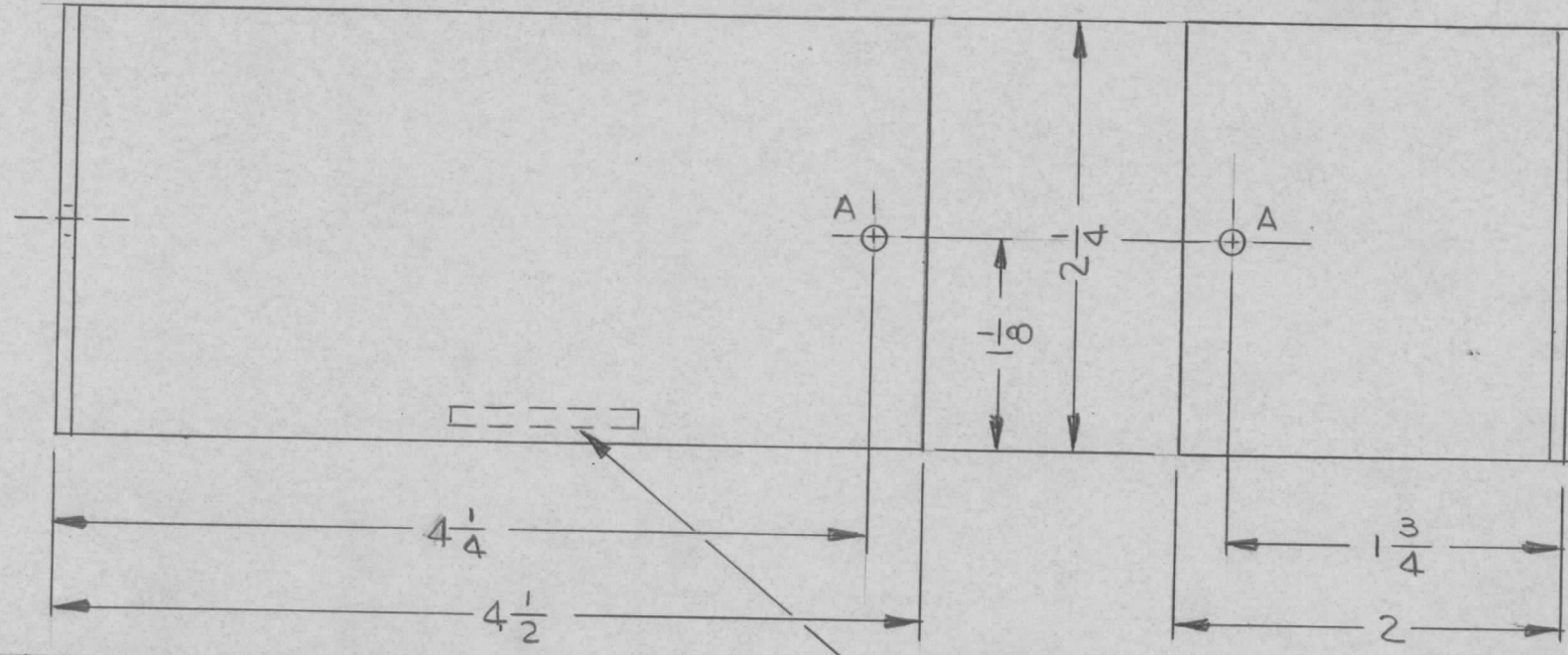


HOLE	HOLE LEGEND	REQ
A	DESCRIPTION	
A	9/64 DIA	2

REQ. PER UNIT	USED ON		
	MODEL	ASS'Y. NO.	DATE
1	GPR-92A		6/9/66
1	GPR-92B		11/1/66

MS6025  $\emptyset$



- UNLESS OTHERWISE SPECIFIED:
1. USE MATERIAL THICKNESS FOR MAXIMUM RADIUS ON ALL BENDS
  2. ALL ANGULAR BENDS 90 DEGREES
  3. REMOVE ALL BURRS AND SHARP EDGES

MARK TMC PT NO. 1/8 HIGH GOTHIC W/LATEST REV. LETTER

REQ. ITEM	PART NO.	DESCRIPTION	SK2300-14	SYMBOL
$\emptyset$	ORIGINAL RELEASE FOR PRODUCTION	11/1/66	$\emptyset$ RME	<i>JL</i>
X	EXP RELEASE	11/1/66	JL	
SYM	DESCRIPTION	DATE	CH. NO.	DRAFTS
	UNLESS OTHERWISE SPECIFIED DIMENSIONS ARE IN INCHES AND INCLUDE CHEMICALLY APPLIED OR PLATED FINISHES	SCALE	1/1	CHECKER
	DECIMALS .X $\pm$ .05 .XX $\pm$ .01 .XXX $\pm$ .005	FRACTIONS $\pm$ 1/64 ANGLES $\pm$ 0° 30'	CODE	ENG. APP.
	TOLERANCES			
	5052-H32	JL	<i>JL</i>	<i>11/1/66</i>
	TYPE & TEMPER	HEAT TREAT. SPEC.	DRAWN	CHECKED
	YEL IRIDITE S404			FINAL APPROVAL
	FINISH & SPEC. NO.	ELEC. DES. APP.	MECH. DES. APP.	MS6025 $\emptyset$