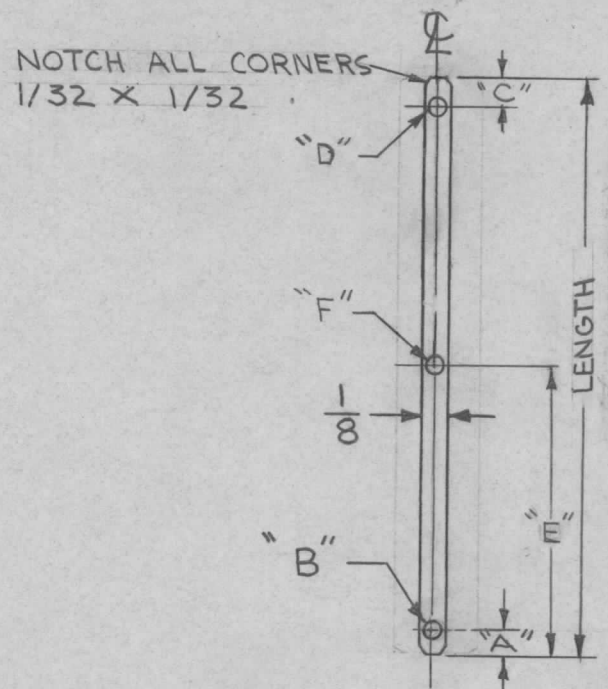


TMC NO.	A	B	C	D	E	F	MAT'L THK.	REQ. PER UNIT	USED ON			MS6022	Q
	DIM.(INCH)	DIA.	DIM.(INCH)	DIA.	DIM.(INCH)	DIA.			MODEL	ASS'Y. NO.	DATE		
MS6022-1	1/8	5/64	—	NH	—	NH	.020		PAL-350		10/24/66		



TMC PART NO. WILL BE IN THE FOLLOWING FORM:

MS6022 - 1 - 3.000

BASIC DWG. NO.

DRILLING PLAN CODE

LENGTH (INCHES)

NOTE:

NH = NO HOLE

SEE APPROPRIATE ML FOR REQUIRED LENGTH

SYM	DESCRIPTION	DATE	CH. NO.	DRAFTS	CHECKER	ENG. APP.	REQ. ITEM	PART NO.	DESCRIPTION	SYMBOL		
Q	ORIGINAL RELEASE FOR PRODUCTION	12/24/66	4	WTD			SEE CHART		THE TECHNICAL MATERIEL CORP. MAMARONECK, NEW YORK	LEAD, CONNECTING, 1/8 WIDE		
X	EXPERIMENTAL RELEASE	10/24/66	X	RME			COPPER					
	UNLESS OTHERWISE SPECIFIED DIMENSIONS ARE IN INCHES AND INCLUDE CHEMICALLY APPLIED OR PLATED FINISHES	SCALE					OFHC - SOFT		RME	Jale	MS6022	Q
	DECIMALS .X ± .05 .XX ± .01 .XXX ± .005	FRACTIONS ± 1/64 ANGLES ± 0° 30'	CODE				5245 SILVER PLATE .0003	HEAT TREAT. SPEC.	DRAWN	CHECKED	MS6022	Q
	TOLERANCES						FINISH & SPEC. NO.		ELEC. DES. APP.	MECH. DES. APP.		