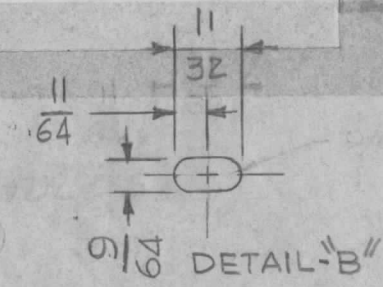


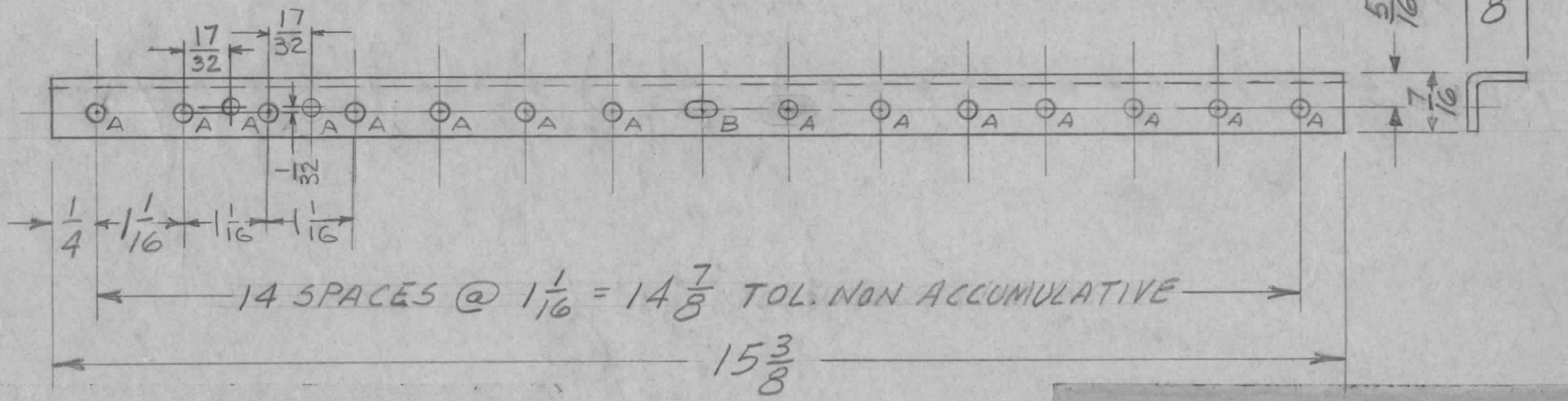
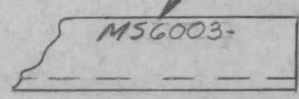
HOLE	DESCRIPTION	REQ
A	9/64 DIA.	16
B	SEE DETAIL	1

REA PER UNIT	USED ON		
	MODEL	ASS'Y. NO.	DATE
	VOX-7	BMA-114	PH 114
	MMX-( )	BMA-103	PH 103

MSG003 B



MARK TMC P/N  
1/8 HIGH GOTHIC W/LATEST  
REV. LETTER



- UNLESS OTHERWISE SPECIFIED:
1. USE MATERIAL THICKNESS FOR MAXIMUM RADIUS ON ALL BENDS
  2. ALL ANGULAR BENDS 90 DEGREES
  3. REMOVE ALL BURRS AND SHARP EDGES

C	'A' HOLE QTY WAS 15	12-19-77	21610	APP	KP	KP	
B	'A' HOLE ADDED	12-11-67	18664	APP	OP	OP	
A	MODEL HFSR-4 DELETED MOD. MMX-( ) WAS MMX-1	10/24/67	CC	APP	OP	OP	
Ø	ORIG. RELEASE FOR PROD.	6-26-67	RG				
X2	QTY. REQ FOR EACH MODEL WAS 2	5-1-67	GDL				
X1	B HOLE WAS 9/64 DIA	1-19-67	GDL				
X	EXP. RELEASE	11/3/66	JL				
ISSUE	ITEM	CHANGED FROM	DATE	CH. NO.	DRAFTS	CHECKER	ENG. APP.
TOLERANCES			SCALE: DO NOT SCALE				
DEC. DIM. ±	S401-451		MAXIMUM ALLOWABLE TOLERANCES HAVE BEEN DETERMINED AND ANY DEVIATIONS WILL BE CAUSE FOR REJECTION.				
FRAC. DIM. ±			REMOVE ALL BURRS AND SHARP EDGES				
ANGULAR DIM. ±							

REQ.	ITEM	PART NO.	O. POSE	DESCRIPTION	SYMBOL
		.063 THICK		SK324611	
		STOCK SIZE		THE TECHNICAL MATERIEL CORP. MAMARONECK, NEW YORK	
		ALUMINUM		ANGLE, STIFFENER	
		MATERIAL			
		5052-H32	G.D.L.		
		TYPE & TEMPER	HEAT TREAT. SPEC.	DRAWN	CHECKED
		5404 YEL. IRIDITE			
		FINISH & SPEC. NO.	ELEC. DES. APP.	MECH. DES. APP.	
					MSG003 B