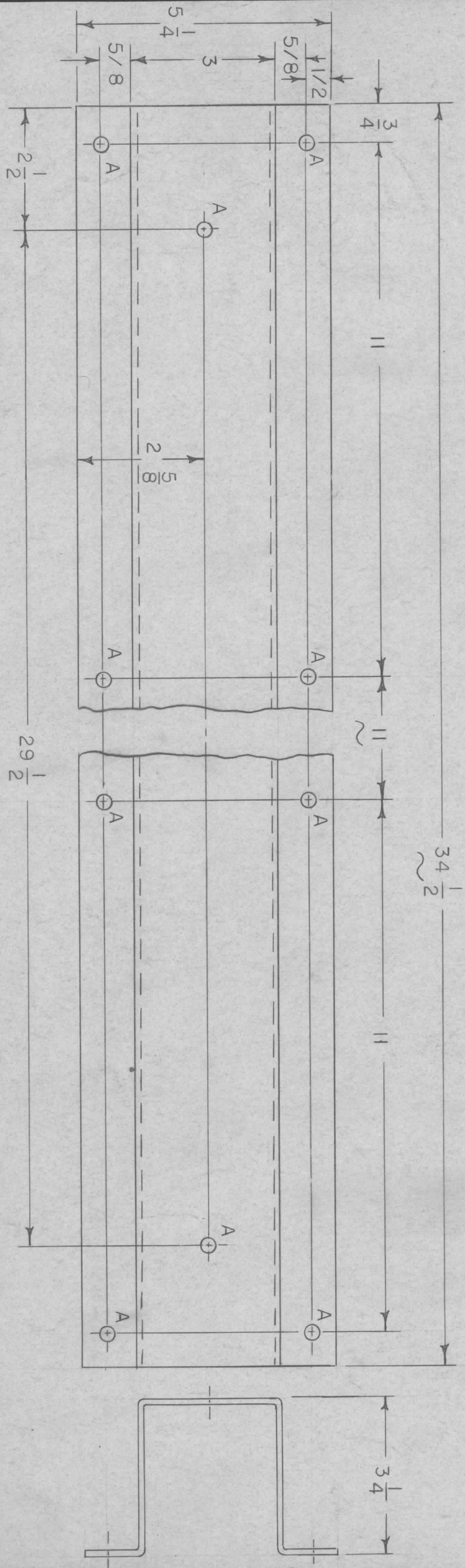


HOLE	DIMENSION	REQD
A	5/16 DIA	10

REVISIONS							
ZONE	LTR	DESCRIPTION	DATE	E.M.N.NO	DRAFT	CHKD	APPD
X		EXP RELEASE	5-7-71		RF		
Ø		ORIG RELEASE FOR PROD	1/12/72		CV		



NOTES:

- UNLESS OTHERWISE SPECIFIED:
1. USE MATERIAL THICKNESS FOR MAXIMUM RADIUS ON ALL BENDS.
  2. ALL ANGULAR BENDS 90 DEGREES.
  3. REMOVE ALL BURRS AND SHARP EDGES.
  4. MOUNT INSERTS AFTER FINISHING.

QTY / UNIT	1	BCT-10KA	BMA 466
MODEL USED ON	APPLICATION		
CODE			

**NOTICE TO PERSONS RECEIVING THIS DRAWING**  
 THE TECHNICAL MATERIEL CORPORATION claims proprietary right in the material disclosed hereon. This drawing is issued in confidence for engineering information only and may not be reproduced or used to manufacture anything shown hereon without permission from THE TECHNICAL MATERIEL CORPORATION to the user. This drawing is loaned for mutual assistance and is subject to recall at any time.

DECIMALS	FRACTIONS
.X ± .05 TOLS.	1/64 ANGLES
.XX ± .01	0° .30'
.XXX ± .005	
MATERIAL 1/8 THK	
ALUM 5052 H32	
FINISH T M C	
GREY	

REQ'D ITEM	PART NUMBER	DESCRIPTION	SYM.
LIST OF MATERIAL			

FINAL APPROVAL	DATE	THE TECHNICAL MATERIEL CORP.	
<i>F. BUDETTI</i>	5/7/71	MAMARONECK, NEW YORK	
MECH. DES.	DATE	PAD, STAB. MTG.	
<i>[Signature]</i>	5/7/71		
ELECT. DES.	DATE		
CHECKED	DATE		
<i>[Signature]</i>	5-7-71		
DRAWN	DATE		
<i>[Signature]</i>	5-7-71		

SIZE	CODE IDENT. NO.	DWG NO.	ISSUE
B	82679	MS 5986	Ø
SCALE	1/2	SHEET	1 OF 1