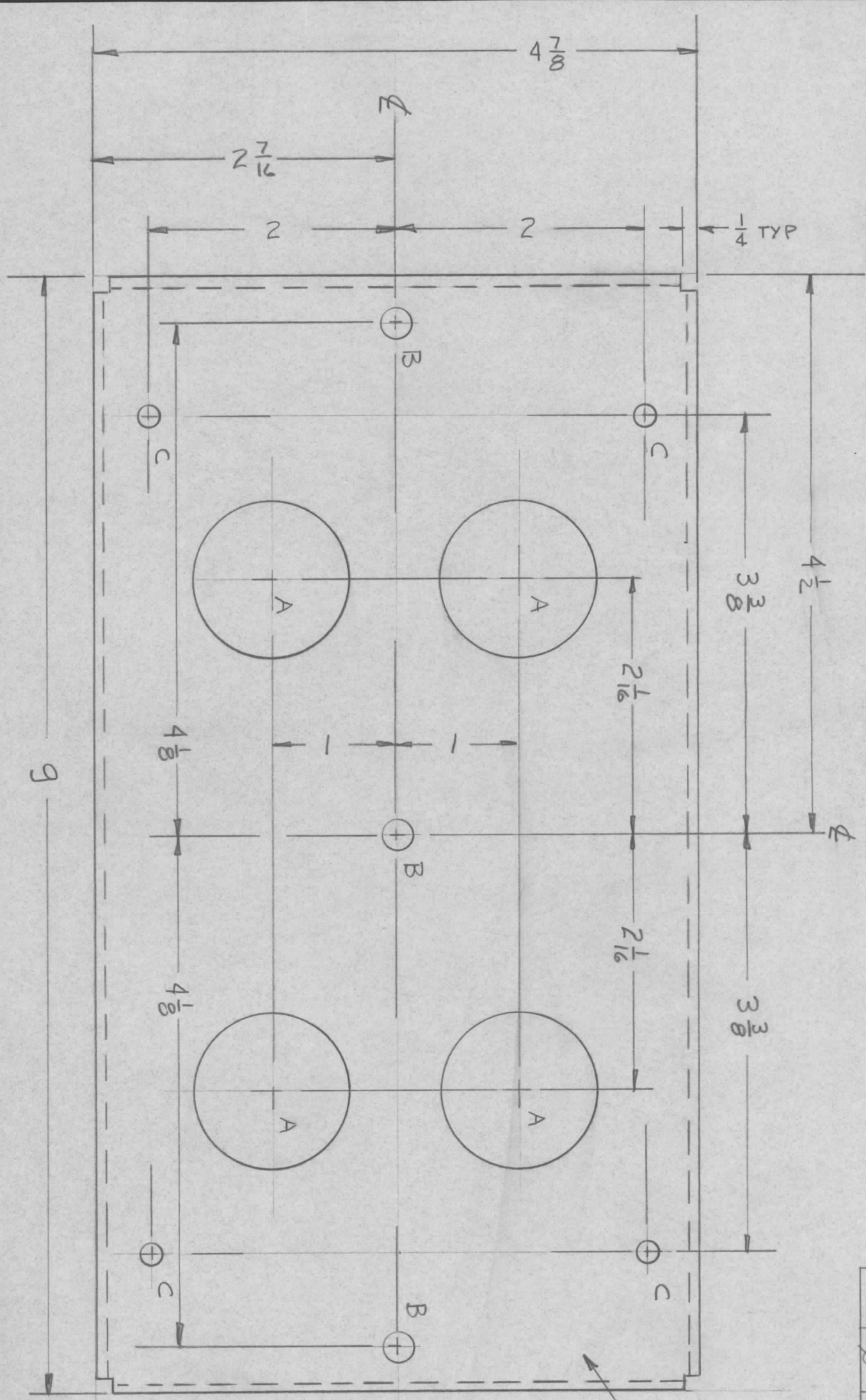


REVISIONS							
ZONE	LTR	DESCRIPTION	DATE	E.M.N.NO	DRAFT	CHKD	APPD
Ø		ORIGINAL RELEASE	5/5/71				

MARK TMC PART NUMBER
1/8 HIGH GOTHIC WITH LATEST
REVISION LETTER

- A ~ 1/4 DIA 4 REQ
- B ~ 15/64 DIA 3 REQ
- C ~ 11/64 DIA 4 REQ

ALL LIPS 3/8"



UNLESS OTHERWISE SPECIFIED:

1. USE MATERIAL THICKNESS FOR MAXIMUM RADIUS ON ALL BENDS.
2. ALL ANGULAR BENDS 90 DEGREES.
3. REMOVE ALL BURRS AND SHARP EDGES.
4. MOUNT INSERTS AFTER FINISHING.

QTY / UNIT	2	MODEL USED ON	HFTA-1KJ	ASSY NO.	AP152
APPLICATION		CODE			

NOTICE TO PERSONS RECEIVING THIS DRAWING
THE TECHNICAL MATERIEL CORPORATION claims proprietary right in the material disclosed hereon. This drawing is issued in confidence for engineering information only and may not be reproduced or used to manufacture anything shown hereon without permission from THE TECHNICAL MATERIEL CORPORATION to the user. This drawing is loaned for mutual assistance and is subject to recall at any time.

DECIMALS	FRACTIONS
X ± .05	1/64
.XX ± .01	TOLS. ANGLES
.XXX ± .005	0° .30'

MATERIAL: 081 ALUM
52052-H 32
FINISH
S404 YEL 121D

REQ'D ITEM	PART NUMBER	DESCRIPTION	SYM.
LIST OF MATERIAL			
BUD 211			

THE TECHNICAL MATERIEL CORP.
MAMARONECK, NEW YORK

BRRKT, CAP MTG

DATE	15/5/71	DATE	23/5/71
MECH. DES.	[Signature]	CHECKED	[Signature]
ELECT. DES.		DRAWN	[Signature]
SIZE	B	CODE IDENT. NO.	82679
SCALE		DWG NO.	MS 5946
		SHEET	OF
		ISSUE	