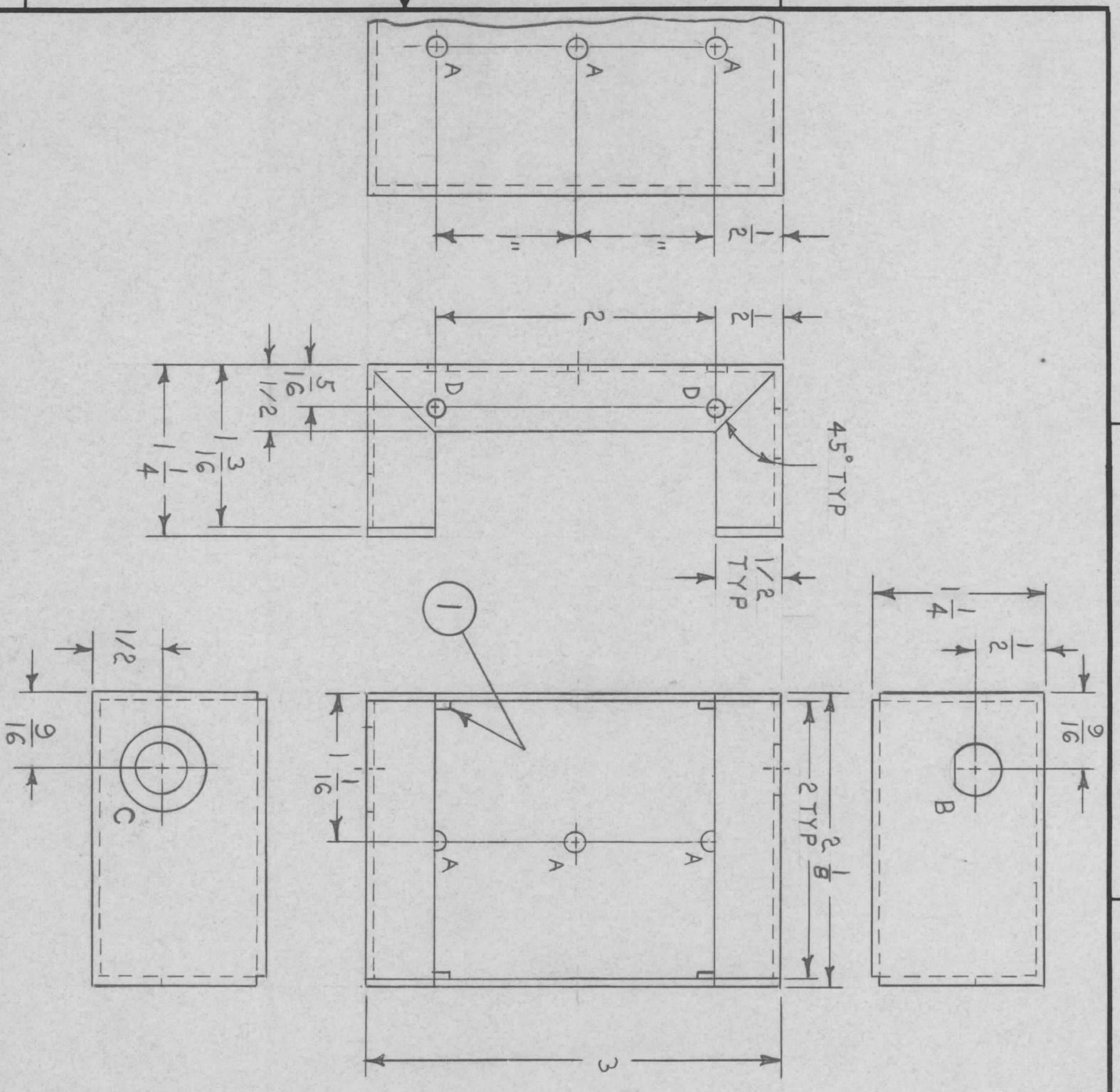
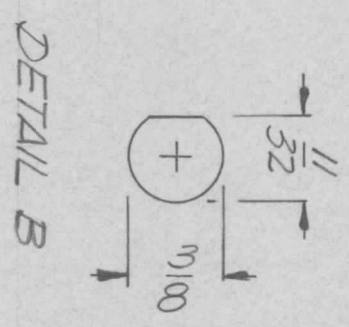


REVISIONS							
ZONE	LTR	DESCRIPTION	DATE	E.M.N. NO.	DRAFT	CHKD	APPD
	X	RELEASED FOR EXP.	11/19/70		RT		
		ORIGINAL RELEASE	11/19/70		Q.		

- HOLE LEGEND
- A - 5/32 D. - 3 REQ'D.
  - B - SEE DETAIL - 1 REQ'D.
  - C - 5/8 D. - 1 REQ'D.
  - D - 1/64 D. - 4 REQ'D.



REF: LD 2436

REQ'D ITEM	PART NUMBER	DESCRIPTION	SYM.
1	NT-129-0440-4	NUT, ROUND, P.E.M.	

THE TECHNICAL MATERIEL CORP.  
MAMARONECK, NEW YORK

BOX

FINAL APPROVAL MECH. DES.	DATE	SIZE	CODE IDENT. NO.	DWG. NO.	ISSUE
<i>[Signature]</i>	11/19/70	B	82679	MS 5696	<i>[Mark]</i>
ELECT. DES.	DATE	SCALE	SHEET 1 OF 1		
<i>[Signature]</i>	11/19/70	1/1			
CHECKED	DATE				
<i>[Signature]</i>	11/19/70				
DRAWN	DATE				
<i>[Signature]</i>	11/19/70				

QTY / UNIT	MODEL USED ON	ASS'Y NO.
1	AX 5127	AX 5127
APPLICATION		
CODE		

NOTICE TO PERSONS RECEIVING THIS DRAWING  
THE TECHNICAL MATERIEL CORPORATION claims proprietary right in the material disclosed hereon. This drawing is issued in confidence for engineering information only and may not be reproduced or used to manufacture anything shown hereon without permission from THE TECHNICAL MATERIEL CORPORATION to the user. This drawing is loaned for mutual assistance and is subject to recall at any time.

- UNLESS OTHERWISE SPECIFIED:
1. USE MATERIAL THICKNESS FOR MAXIMUM RADIUS ON ALL BENDS.
  2. ALL ANGULAR BENDS 90 DEGREES.
  3. REMOVE ALL BURRS AND SHARP EDGES.
  4. MOUNT INSERTS AFTER FINISHING.