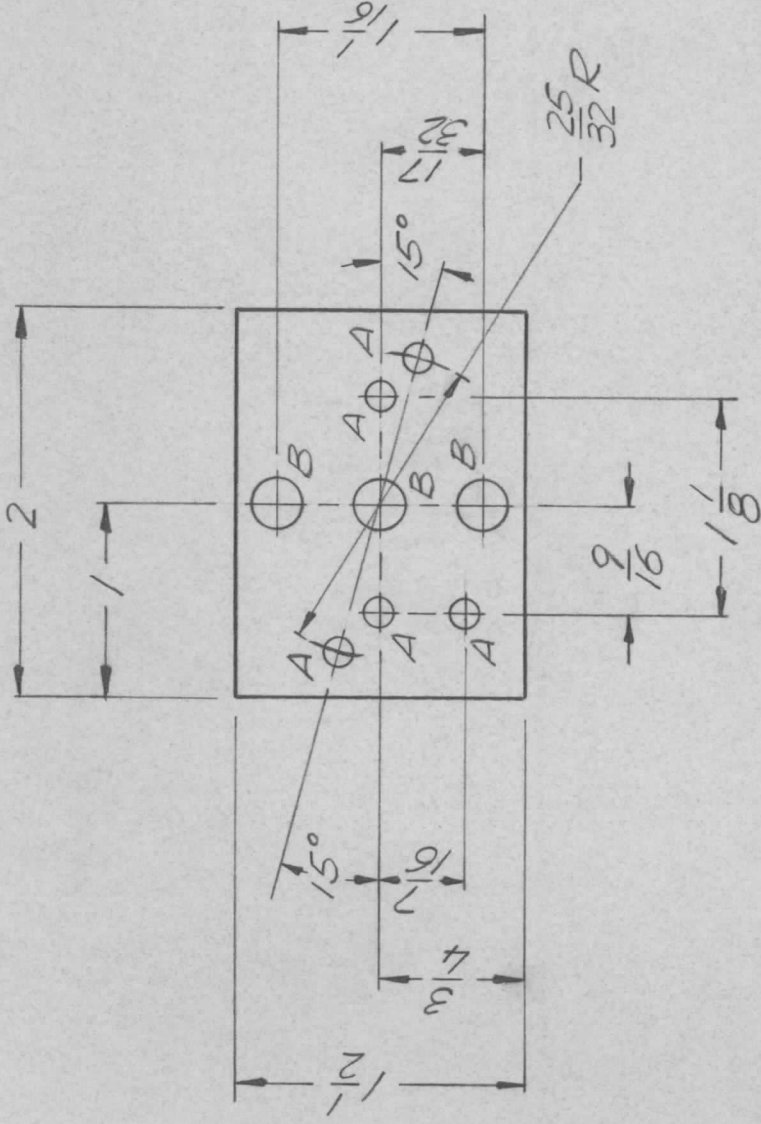


APPLICATION

REVISIONS

QTY	MODEL USED ON	ASS'Y NO.	LTR	DESCRIPTION	DATE	E.M.N.NO	DRAFT	CHKD	APPD
1	LPFB-2		Ø	ORIGINAL RELEASE	11/30/70		Ø		



HOLE DESCRIPTION QTY

A 9/64 DIA 5

B 1/4 DIA 3

UNLESS OTHERWISE SPECIFIED DIMENSIONS ARE IN INCHES AND INCLUDE CHEMICALLY APPLIED OR PLATED FINISHES		REQ'D ITEM	PART NUMBER	DESCRIPTION	SYM.
DECIMALS	FRACTIONS	LIST OF MATERIAL			
X ± .05	1/64	F. BUDETTI		THE TECHNICAL MATERIEL CORP.	
.XX ± .01	TOLS.	FINAL APPROVAL		MAMARONECK, NEW YORK	
.XXX ± .005	ANGLES 0°-30°	MECH. DES.	DATE 20 Nov 70		
		ELECT. DES.	DATE 11-30-70		
		CHECKED	DATE		
		DRAWN	DATE 10/29/70	BRACKET, WAFERMOUNT	
MATERIAL 064 ALUM		SIZE CODE IDENT. NO. DWG NO. ISSUE			
5052 H32		A 82679 MS 5691 Ø			
FINISH S404		SCALE 1:1 SHEET OF			
YEL. IRIDITE					

NOTICE TO PERSONS RECEIVING THIS DRAWING

THE TECHNICAL MATERIEL CORPORATION claims proprietary right in the material disclosed hereon. This drawing is issued in confidence for engineering information only and may not be reproduced or used to manufacture anything shown hereon without permission from THE TECHNICAL MATERIEL CORPORATION to the user. This drawing is loaned for mutual assistance and is subject to recall at any time.