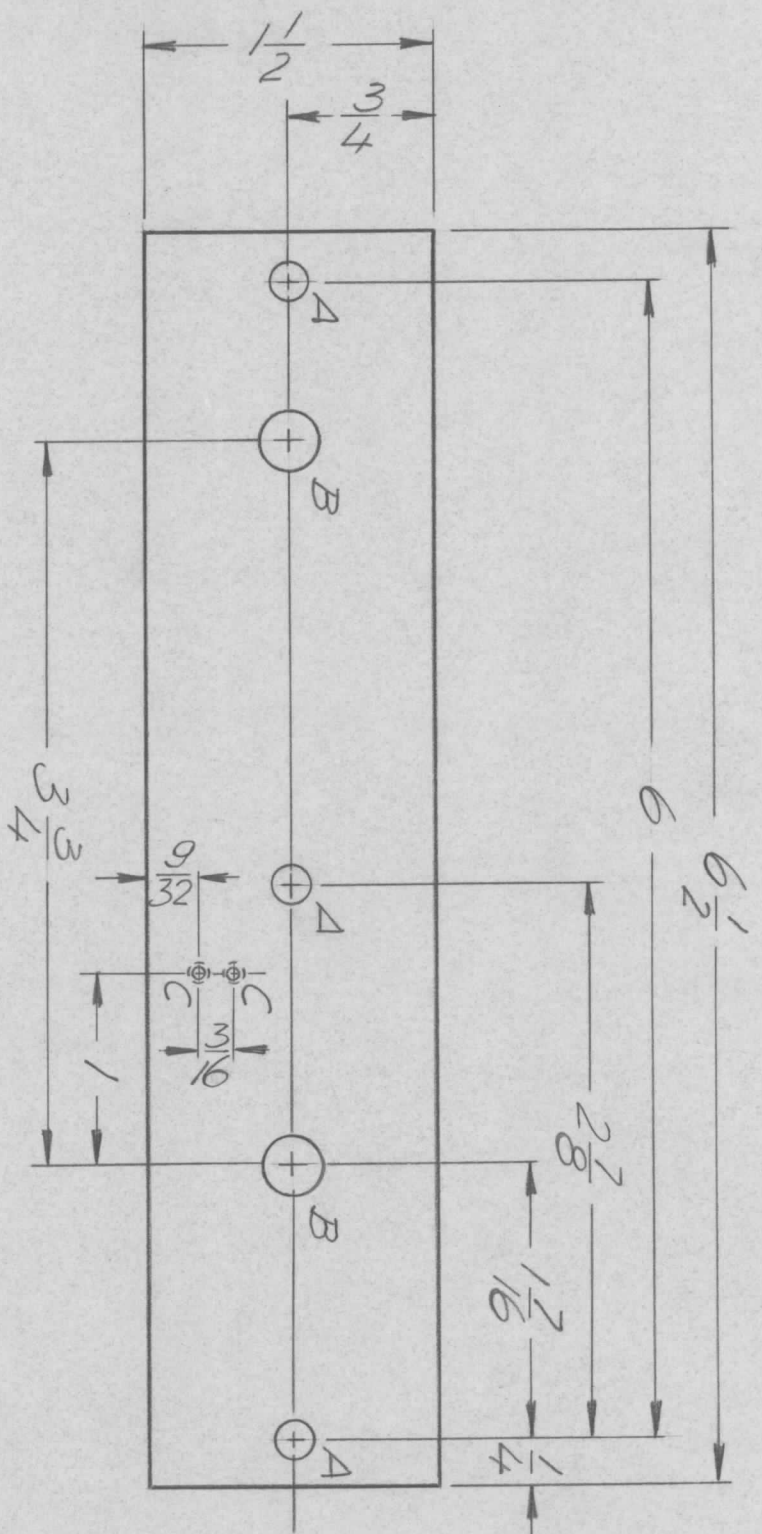


REVISIONS							
ZONE	LTR	DESCRIPTION	DATE	E.M.N. NO	DRAFT	CHKD	APPD
	X	EXP. RELEASE	8/28/70				
	Ø	ORIGINAL RELEASE	10/26/70				



HOLE LEGEND

A - 13/64 DIA. (3 REQ.)

B - 5/16 DIA. (2 REQ.)

C - DRILL & TAP
0256 (THRU) (2 REQ.)

QTY / UNIT	1	MODEL USED ON	TLAM - 1K	ASS'Y NO.	AS 147
APPLICATION					
CODE					

NOTICE TO PERSONS RECEIVING THIS DRAWING
 THE TECHNICAL MATERIEL CORPORATION claims proprietary right in the material disclosed hereon. This drawing is issued in confidence for engineering information only and may not be reproduced or used to manufacture anything shown hereon without permission from THE TECHNICAL MATERIEL CORPORATION to the user. This drawing is loaned for mutual assistance and is subject to recall at any time.

REQ'D ITEM	PART NUMBER	DESCRIPTION	SYM.
F. BUDETT			
FINAL APPROVAL	DATE	LIST OF MATERIAL	
Mech. Des. ALPETROCCA	28 Oct 70	THE TECHNICAL MATERIEL CORP.	
ELECT. DES.	10-23-70	MAMARONECK, NEW YORK	
CHECKED	DATE	BAR, SUPPORT, BS. ASS'Y	
DRAWN	DATE	SIZE CODE IDENT. NO. DWG NO. ISSUE	
	8/28/70	B 82679 MS 5680 Ø	
SCALE 1:1		SHEET OF	

UNLESS OTHERWISE SPECIFIED DIMENSIONS ARE IN INCHES AND INCLUDE CHEMICALLY APPLIED OR PLATED FINISHES

DECIMALS FRACTIONS

.X ± .05 TOLS. 1/64 ANGLES 0° - 30'

.XX ± .01

.XXX ± .005

MATERIAL 1/8 ALUM

FINISH 2024 - T3

S404 YEL. IRIDITE