

APPLICATION

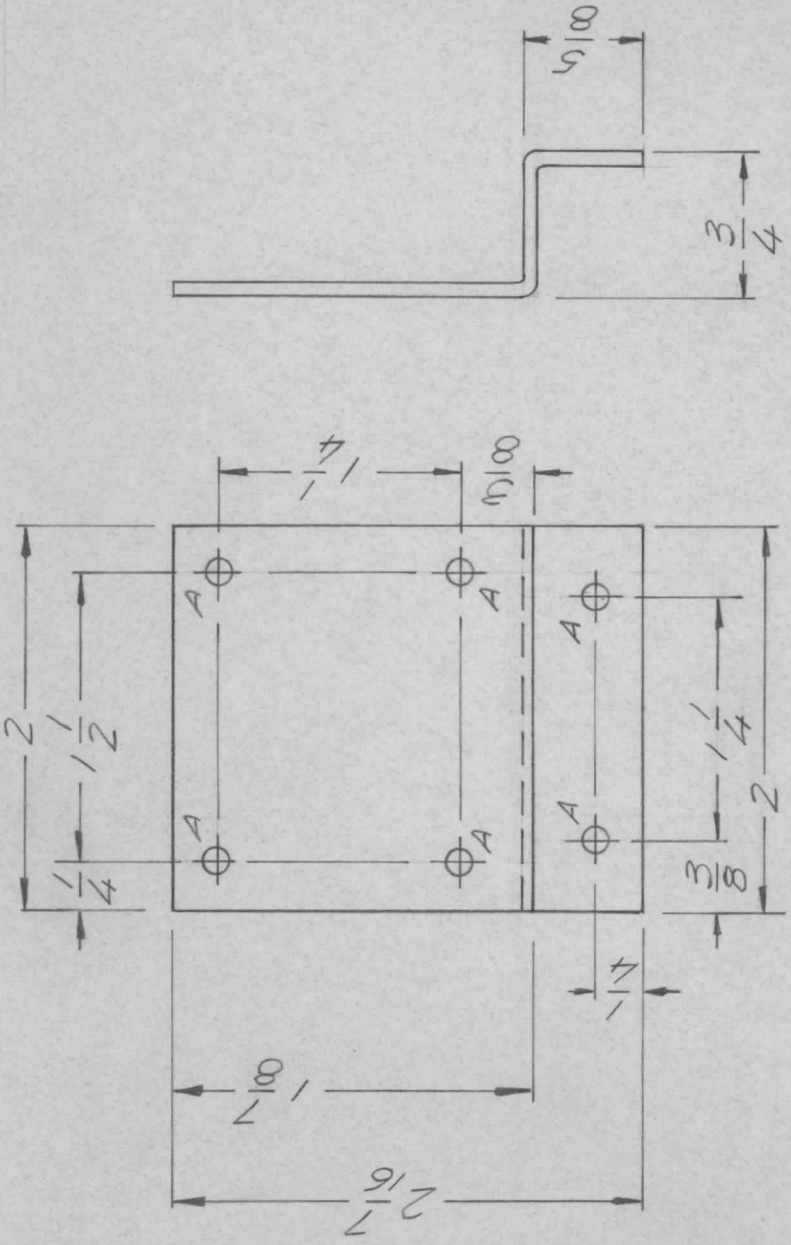
QTY	MODEL USED ON	ASS'Y NO.	LTR
1	SYM-1200	AX5121	X

DESCRIPTION	DATE
EXP RELEASE	8/21/70
ORIGINAL RELEASE	9/17/70

REVISIONS

E.M.N.NO	DRAFT	CHKD	APPD
	GE		
	CO		

HOLE DESCRIPTION QTY.
A 11/64 DIA. 6



UNLESS OTHERWISE SPECIFIED:

1. USE MATERIAL THICKNESS FOR MAXIMUM RADIUS ON ALL BENDS.
2. ALL ANGULAR BENDS 90 DEGREES.
3. REMOVE ALL BURRS AND SHARP EDGES.
4. MOUNT INSERTS AFTER FINISHING.

UNLESS OTHERWISE SPECIFIED DIMENSIONS ARE IN INCHES AND INCLUDE CHEMICALLY APPLIED OR PLATED FINISHES

DECIMALS	FRACTIONS
X ± .05	1/64
.XX ± .01	ANGLES
.XXX ± .005	0°-30°

MATERIAL 5052 H32

.0063 ALUM

FINISH IRIDITE

REQ'D ITEM	PART NUMBER	DESCRIPTION
F. BLUDETTI		LIST OF MATERIAL
FINAL APPROVAL	DATE	
<i>[Signature]</i>	17 SEP 70	
MECH. DES.	DATE	
<i>[Signature]</i>	8/24/70	
ELECT. DES.	DATE	
CHECKED	DATE	
DRAWN	DATE	
GE	8/21/70	

SYMBOL	DESCRIPTION
	THE TECHNICAL MATERIEL CORP. MAMARONECK, NEW YORK
	BRACKET, MTG., RELAY

NOTICE TO PERSONS RECEIVING THIS DRAWING
THE TECHNICAL MATERIEL CORPORATION claims proprietary right in the material disclosed hereon. This drawing is issued in confidence for engineering information only and may not be reproduced or used to manufacture anything shown hereon without permission from THE TECHNICAL MATERIEL CORPORATION to the user. This drawing is loaned for mutual assistance and is subject to recall at any time.

SIZE	CODE IDENT. NO.	DWG NO.	ISSUE
A	82679	MS 5651	Ø
SCALE	1:1	SHEET	OF