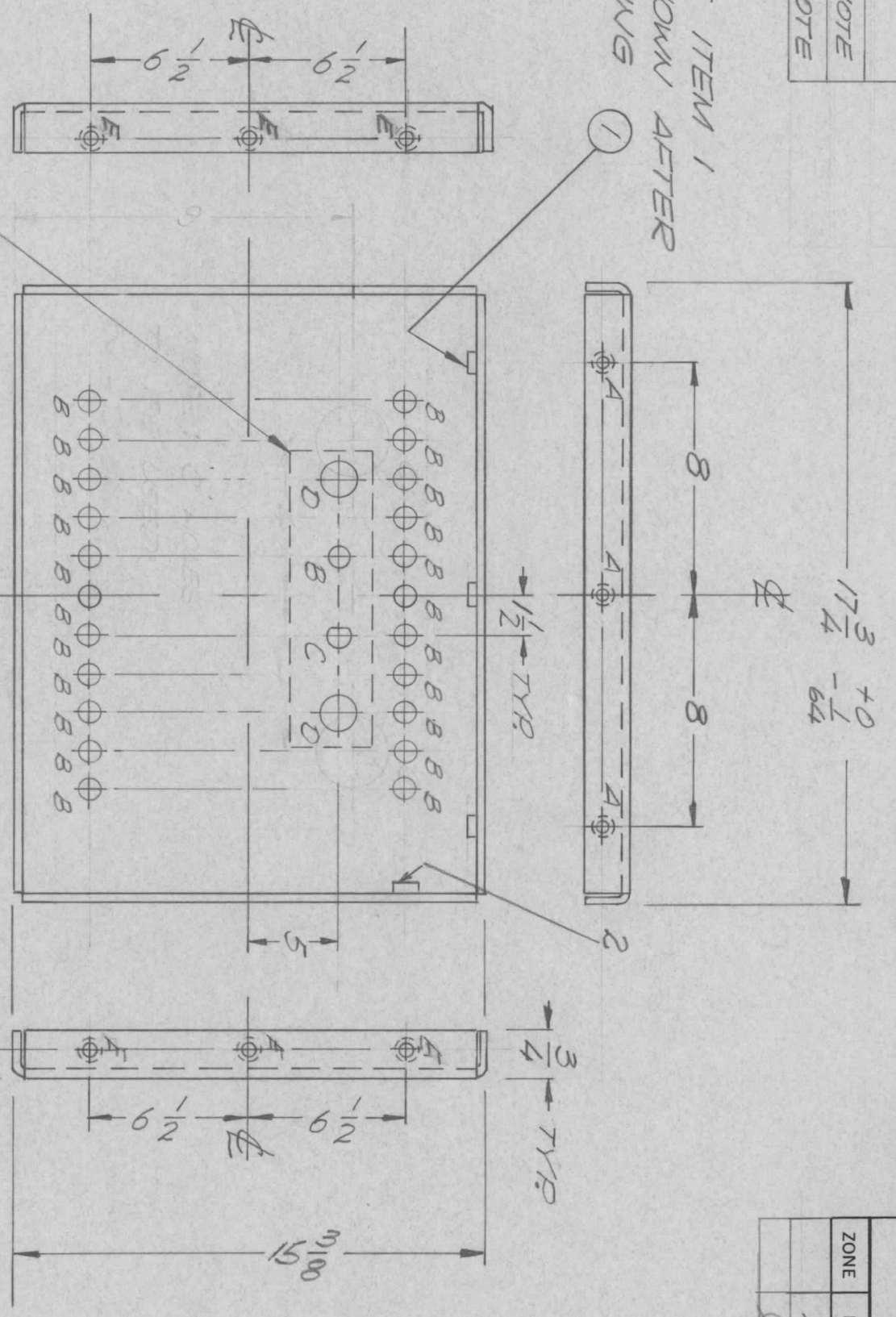


TMC P/N	
MS 5649-1	SEE NOTE
MS 5649-2	SEE NOTE

MOUNT ITEM 1 AS SHOWN AFTER FINISHING



HOLE	DESCRIPTION	QTY
A	.191-.194 DIA.	3
B	1/2 DIA.	23
C	SEE DETAIL	1
D	1" DIA.	2
E	.251-.254 DIA	9

C - DETAIL

NOTE:
FOR MS5649-2 DELETE HOLES D, B, C, D AS SHOWN IN DOTTED LINE ONLY.
FOR MS 5649-1 INCLUDE HOLES D, B, C, D IN DOTTED LINE.
REF: LD2420

UNLESS OTHERWISE SPECIFIED:

1. USE MATERIAL THICKNESS FOR MAXIMUM RADIUS ON ALL BENDS.
2. ALL ANGULAR BENDS 90 DEGREES.
3. REMOVE ALL BURRS AND SHARP EDGES.
4. MOUNT INSERTS AFTER FINISHING.

REVISIONS							
ZONE	LTR	DESCRIPTION	DATE	E.M.N. NO	DRAFT	CHKD	APPD
	X	EXP RELEASE	8/6/76		GE		
	Ø	ORIGINAL RELEASE	9/17/76		Ø		

REQ'D	ITEM	PART NUMBER	DESCRIPTION	SYM.
Ø	2	NT129-1032-4	NUT SPLINE	E
Ø	1	NT129-0632-4	NUT SPLINE	A

LIST OF MATERIAL		
FINAL APPROVAL	DATE	THE TECHNICAL MATERIEL CORP.
MECH. DES.	DATE	MAMARONECK, NEW YORK
ELECT. DES.	DATE	
CHECKED	DATE	
DRAWN	DATE	

PAVEL FR. & REAR

QTY / UNIT	2	SYN 1200	AX5121
MODEL USED ON		ASS'Y NO.	
APPLICATION			
CODE			

UNLESS OTHERWISE SPECIFIED DIMENSIONS ARE IN INCHES AND INCLUDE CHEMICALLY APPLIED OR PLATED FINISHES

DECIMALS: .X ± .05 TOLS. 1/64
.XX ± .01 ANGLES 0°-30'
.XXX ± .005

MATERIAL: .081 ALUM., 5052 H32

FINISH: S114 S520 TMC BLUE-GREY TEXTURED

SCALE	N.T.S.	SHEET	OF
SIZE	B	CODE IDENT. NO.	82679
DWG NO.	MS 5649	ISSUE	Ø

NOTICE TO PERSONS RECEIVING THIS DRAWING

THE TECHNICAL MATERIEL CORPORATION claims proprietary right in the material disclosed hereon. This drawing is issued in confidence for engineering information only and may not be reproduced or used to manufacture anything shown hereon without permission from THE TECHNICAL MATERIEL CORPORATION to the user. This drawing is loaned for mutual assistance and is subject to recall at any time.