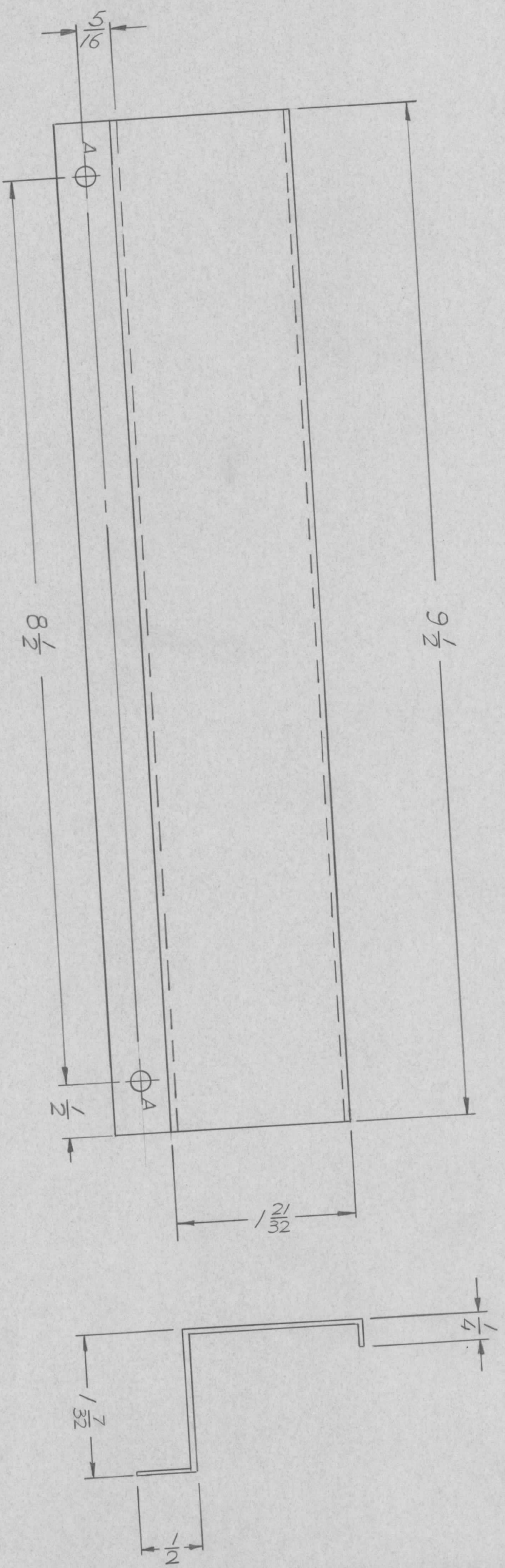


| ZONE | LTR | DESCRIPTION | DATE | INITIALS |
|------|-----|-------------------------|---------|----------|
| X | | EXP RELEASE | 9/18-69 | GE |
| Y1 | | DIM 1 9/16 CHG TO 1 3/2 | 9/24/69 | GE |
| Ø | | ORIGINAL RELEASE | 1/11/70 | Ø |



2 HOLES 1/16 DIA.
(2 REQ)

| | | | | | |
|-------------|---|---------------|----------|----------|--------|
| QTY / UNIT | 1 | MODEL USED ON | PALA-10K | ASSY NO. | AP 148 |
| APPLICATION | | CODE | | | |

NOTICE TO PERSONS RECEIVING THIS DRAWING
 THE TECHNICAL MATERIEL CORPORATION claims proprietary right in the material disclosed hereon. This drawing is issued in confidence for engineering information only and may not be reproduced or used to manufacture anything shown hereon without permission from THE TECHNICAL MATERIEL CORPORATION to the user. This drawing is loaned for mutual assistance and is subject to recall at any time.

| | |
|-------------|-----------|
| DECIMALS | FRACTIONS |
| .X ± .05 | 1/64 |
| .XX ± .01 | ANGLES |
| .XXX ± .005 | 0° - 30' |

FINISH S404
VEL. IRIDITE

| | | | |
|----------------|-------------|--|------|
| REQ'D ITEM | PART NUMBER | DESCRIPTION | SYM. |
| F. BUDETTI | | COVER, CABLE GUIDE | |
| FINAL APPROVAL | DATE | THE TECHNICAL MATERIEL CORP. MAMARONECK, NEW YORK | |
| MECH. DES. | DATE | | |
| ELECT. DES. | DATE | | |
| CHECKED | DATE | | |
| DRAWN | DATE | | |

| | | | |
|-------|-----------------|---------|-------|
| SIZE | CODE IDENT. NO. | DWG NO. | ISSUE |
| B | 82679 | M55611 | Ø |
| SCALE | 1:1 | SHEET | OF |
| | | 1 | |

4

3

2

1

A

B

B

C

D

5

(10-66)