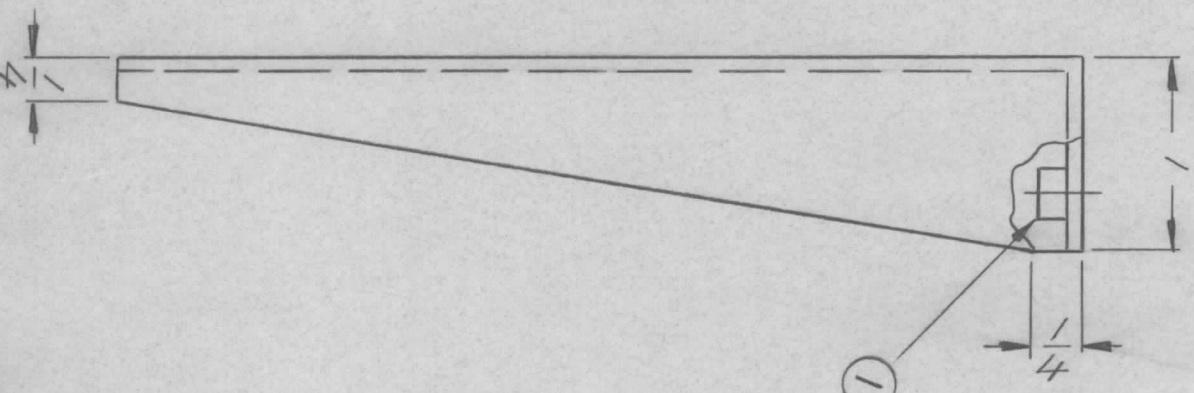
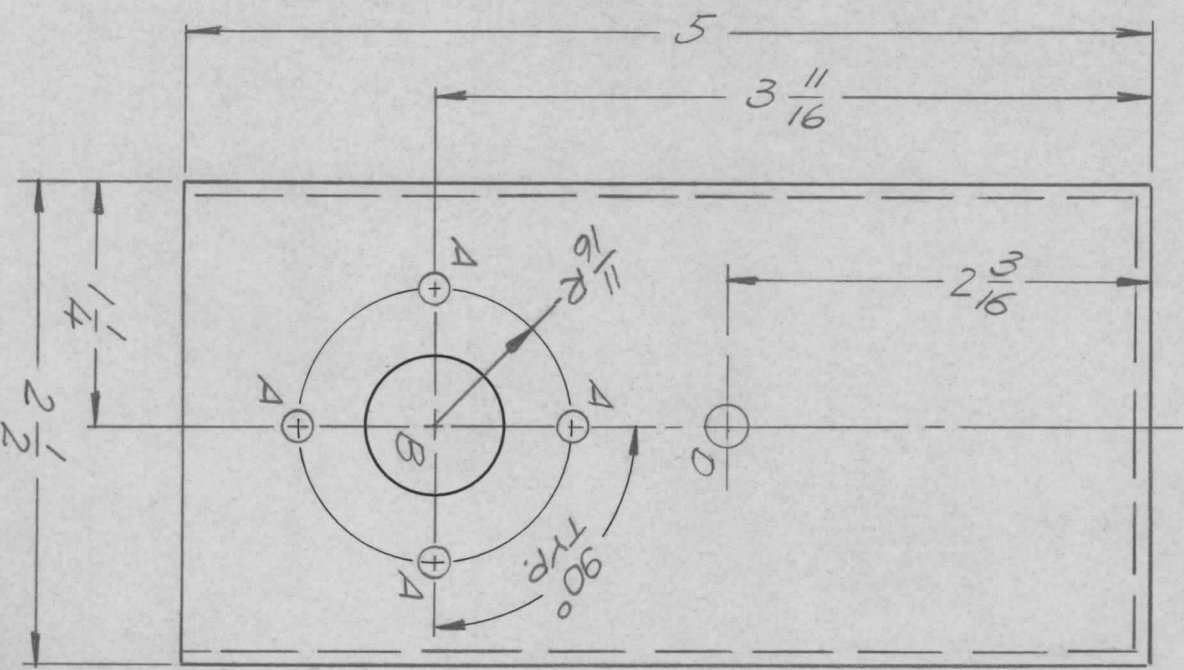
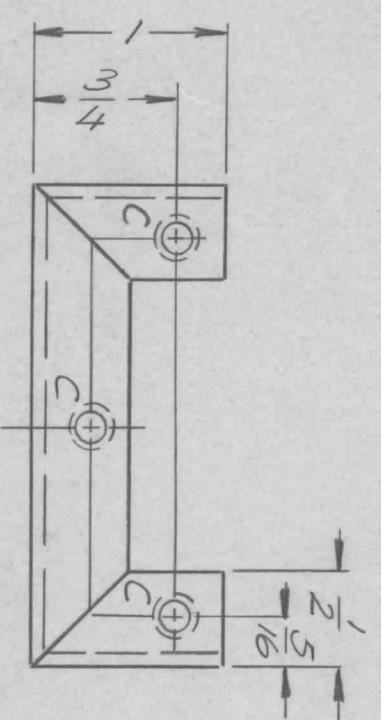


REVISIONS						
ZONE	LTR	DESCRIPTION	DATE	E.M.N. NO	DRAFT	CHKD
X		EXP. RELEASE	10/28/69		KLH	
D		ORIGINAL RELEASE	1/14/69		QJ	
A		ADD ONE D HOLE	12/7/6	20145	GE	QJ



① MOUNT IN ALL 1" C" HOLES AS SHOWN.

HOLE	DESCRIPTION	REQ.
A	9/64 DIA	4
B	11/16 DIA.	1
C	.221-.224 DIA.	3
D	7/32 DIA.	1

REF: LD 2382

REQ'D ITEM	PART NUMBER	DESCRIPTION	SYM.
3	1	NT129-0832-4 NUT, ROUND, SWAGE TYPE	C

THE TECHNICAL MATERIEL CORP.
MAMARONECK, NEW YORK

BRACKET, MTG, INPUT BOT.

QTY / UNIT	1	MODEL USED ON	PALA-10K	ASS'Y NO.	AP 148
APPLICATION					
CODE					

UNLESS OTHERWISE SPECIFIED DIMENSIONS ARE IN INCHES AND INCLUDE CHEMICALLY APPLIED OR PLATED FINISHES	FRACTIONS	1/64
DECIMALS	TOLS.	ANGLES
.X ± .05		0° - 30'
.XX ± .01		
.XXX ± .005		

FINAL APPROV. DATE	MECH. DES. DATE	ELECT. DES. DATE
ALF. 1/2-70		
CHECKED DATE	DRAWN DATE	

SIZE	CODE IDENT. NO.	DWG NO.	ISSUE
B	82679	M5 5525	A
SCALE	1:1	SHEET	OF

NOTICE TO PERSONS RECEIVING THIS DRAWING
THE TECHNICAL MATERIEL CORPORATION claims proprietary right in the material disclosed hereon. This drawing is issued in confidence for engineering information only and may not be reproduced or used to manufacture anything shown hereon without permission from THE TECHNICAL MATERIEL CORPORATION to the user. This drawing is loaned for mutual assistance and is subject to recall at any time.