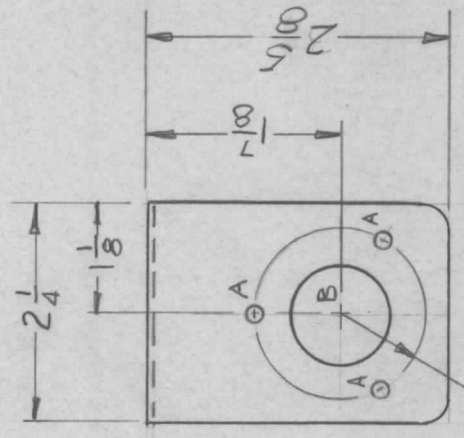
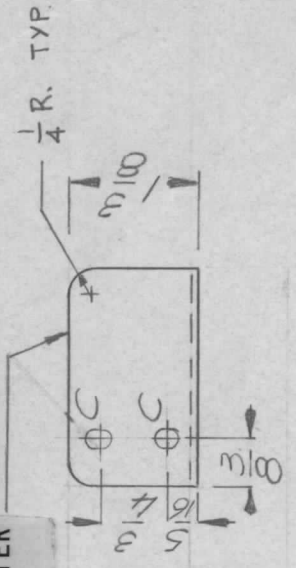


APPLICATION			REVISIONS						
QTY	MODEL USED ON	ASS'Y NO.	LTR	DESCRIPTION	DATE	E.M.N.NO	DRAFT	CHKD	APPD
1	TLAM-1K	AS147	Ø	ORIGINAL RELEASE'	1/14/71				
			A	REVISED	3/31/71	20303	GE	W. B. B.	

MARK TMC PART NUMBER
1/8 HIGH GOTHIC WITH LATEST
REVISION LETTER



UNLESS OTHERWISE SPECIFIED:
 1. USE MATERIAL THICKNESS FOR MAXIMUM RADIUS ON ALL BENDS.
 2. ALL ANGULAR BENDS 90 DEGREES.
 3. REMOVE ALL BURRS AND SHARP EDGES.

3 Holes $\frac{7}{8}$ R
 120° APART
 A ~ $\frac{1}{64}$ DIA. 3 REQ'D
 B ~ 1" DIA. 1 REQ'D.
 C - 1/164 x 11/32 SLOT 2 REQ.

REQ'D ITEM	PART NUMBER	DESCRIPTION	SYM.
LIST OF MATERIAL			
THE TECHNICAL MATERIEL CORP. MAMARONECK, NEW YORK			
STRAP, CAP			
SIZE	CODE IDENT. NO.	DWG NO.	ISSUE
A	82679	MS 5498	A
SCALE	N/T/S	SHEET	OF

FINAL APPROVAL	DATE
<i>[Signature]</i>	15 Jan 71
MECH. DES.	DATE
<i>[Signature]</i>	15 Jan 71
ELECT. DES.	DATE
CHECKED	DATE
DRAWN	DATE
<i>[Signature]</i>	11 Jan 71

UNLESS OTHERWISE SPECIFIED
DIMENSIONS ARE IN INCHES
AND INCLUDE CHEMICALLY APPLIED
OR PLATED FINISHES

DECIMALS FRACTIONS
 X ± .05 1/64
 .XX ± .01 TOLS. ANGLES
 .XXX ± .005 0°-30°

MATERIAL .030
 HOT ROLLED COPPER
 FINISH
 S245 SILVER PLATE

NOTICE TO PERSONS RECEIVING THIS DRAWING
 THE TECHNICAL MATERIEL CORPORATION claims proprietary right in the material disclosed hereon. This drawing is issued in confidence for engineering information only and may not be reproduced or used to manufacture anything shown hereon without permission from THE TECHNICAL MATERIEL CORPORATION to the user. This drawing is loaned for mutual assistance and is subject to recall at any time.