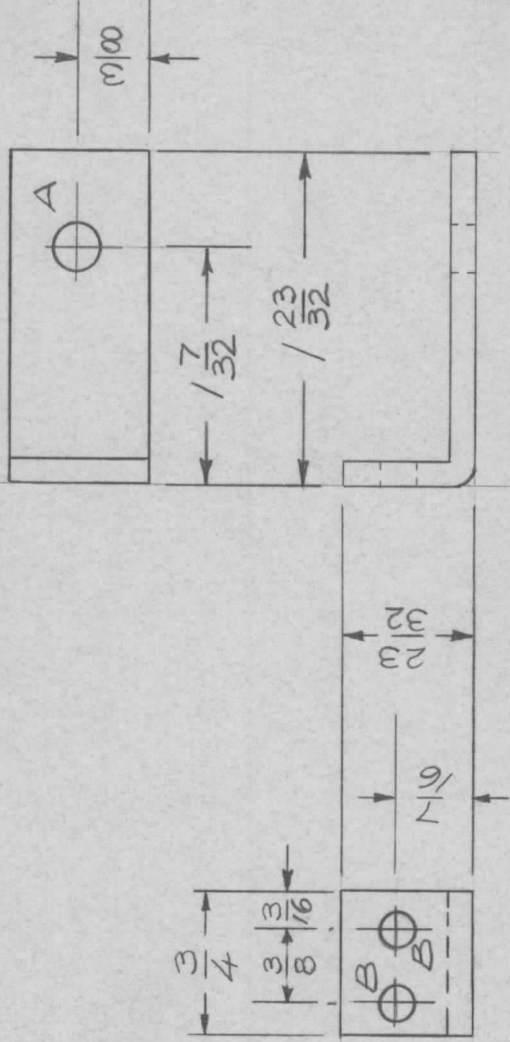


APPLICATION

QTY	MODEL USED ON	ASS'Y NO.	LTR
7	HFRR-4	BMA291	X

REVISIONS

DESCRIPTION	DATE	E.M.N.NO	DRAFT	CHKD	APPD
EXP. RELEASE	2/27/69	--	GE		
ORIG. RELEASE FOR PROD.	2/28/69		RG		JDE



SYM	HOLE SIZE	REQ
A	15/64	1
B	1/64	2

UNLESS OTHERWISE SPECIFIED DIMENSIONS ARE IN INCHES AND INCLUDE CHEMICALLY APPLIED OR PLATED FINISHES

DECIMALS ± .05
 .XX ± .01
 .XXX ± .005
 FRACTIONS 1/64
 TOLS. ANGLES 0°-30°

MATERIAL 1/8" ALUM
 5052-H32
 FINISH S404
 YELLOW IRIDITE

REQ'D ITEM	PART NUMBER	DESCRIPTION	SYM.
LIST OF MATERIAL			
FINAL APPROVAL	DATE	THE TECHNICAL MATERIEL CORP. MAMARONECK, NEW YORK BRACKET, MTG, TUNER	
MECH. DES.	DATE		
ELECT. DES.	DATE		
CHECKED	DATE		
DRAWN	DATE		

NOTICE TO PERSONS RECEIVING THIS DRAWING
 THE TECHNICAL MATERIEL CORPORATION claims proprietary right in the material disclosed hereon. This drawing is issued in confidence for engineering information only and may not be reproduced or used to manufacture anything shown hereon without permission from THE TECHNICAL MATERIEL CORPORATION to the user. This drawing is loaned for mutual assistance and is subject to recall at any time.

SIZE	CODE IDENT. NO.	DWG NO.	ISSUE
A	82679	MS 5452	0
SCALE	1:1	SHEET	OF