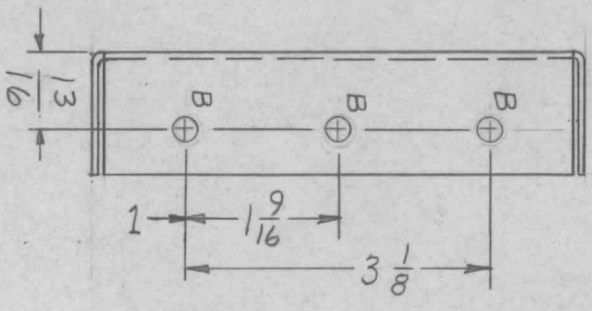
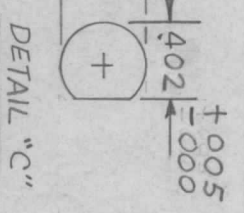
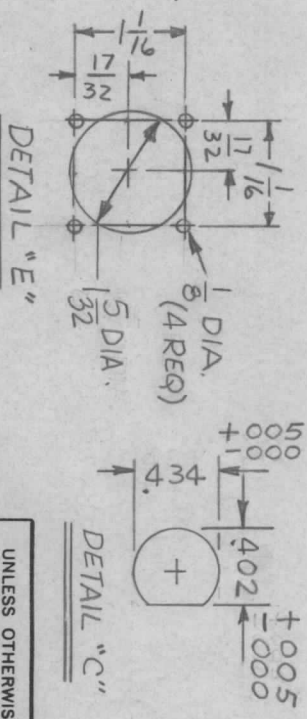
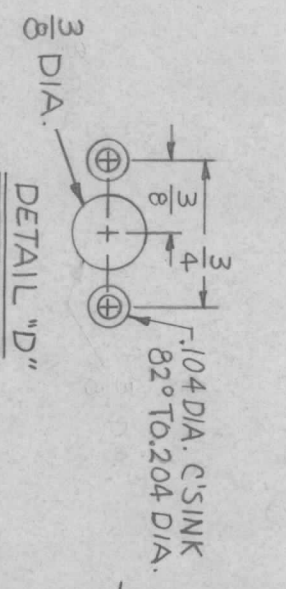
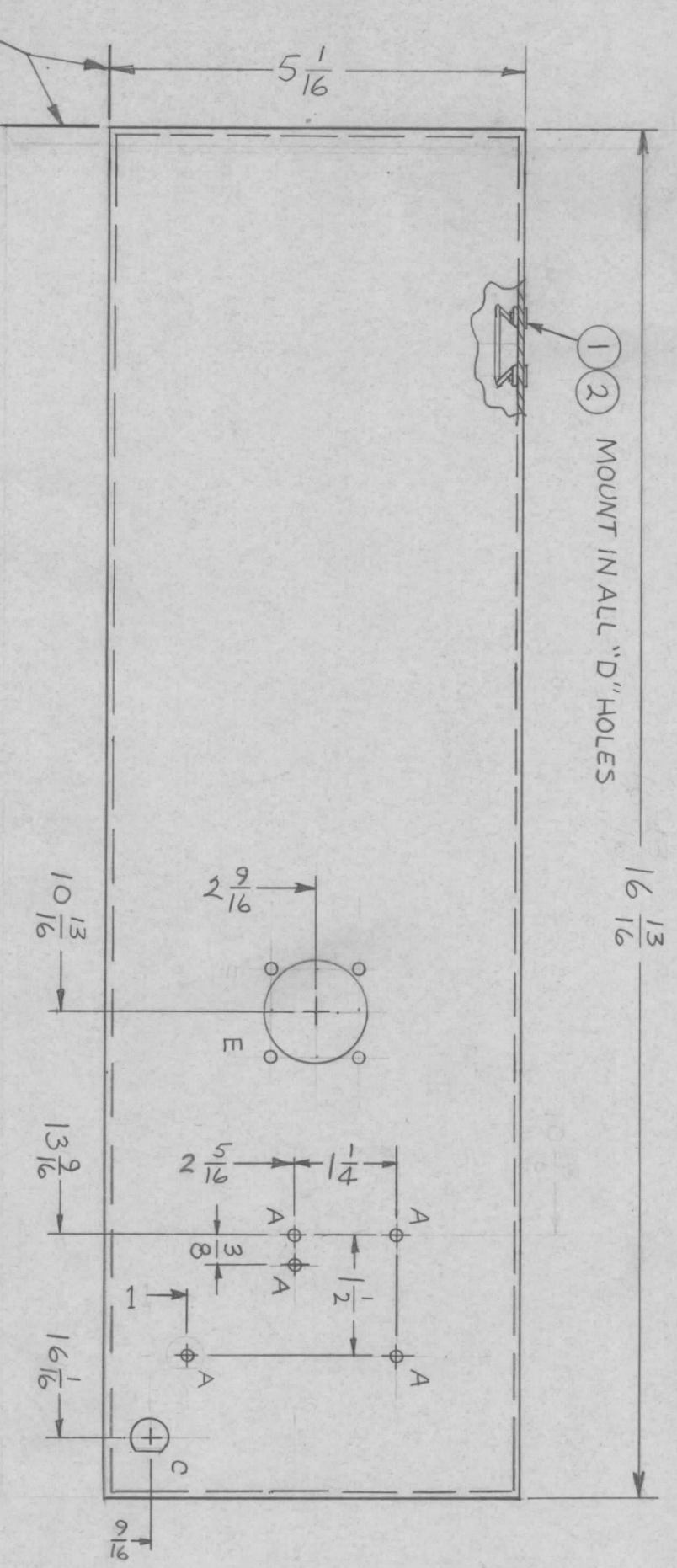
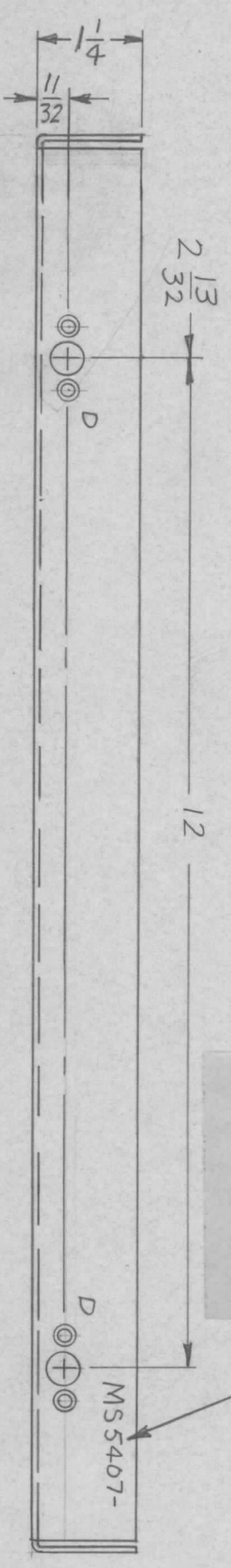


| REVISIONS | | | | | | |
|-----------|-----|------------------|---------|-----------|-------|------|
| ZONE | LTR | DESCRIPTION | DATE | E.M.N. NO | DRAFT | CHKD |
| X | | EXP. RELEASE | 6/27/68 | | MS. | |
| Ø | | ORIGINAL RELEASE | 8/7/69 | Ø | (O) | |

MARK TMC PART NUMBER
1/8 HIGH GOTHIC WITH LATEST
REVISION LETTER



| HOLE | DESCRIPTION | REQ |
|------|-------------|-----|
| A | 1/8 DIA | 5 |
| B | 13/64 DIA | 6 |
| C | SEE DETAIL | 1 |
| D | SEE DETAIL | 2 |
| E | SEE DETAIL | 1 |

| REQ'D ITEM | PART NUMBER | DESCRIPTION | SYM. |
|------------|---------------|--------------|------|
| 2 | FS 102-2 | FASTENERS | D |
| 4 | RI 100-094-32 | BLIND RIVETS | D |

THE TECHNICAL MATERIEL CORP.
MAMARONECK, NEW YORK

PANEL, REAR

| | | | |
|-------|-----------------|----------|-------|
| SIZE | CODE IDENT. NO. | DWG. NO. | ISSUE |
| B | 82679 | MS 5407 | Ø |
| SCALE | 2:1 | SHEET | OF |

| | | | | | |
|-------------|---|---------------|----------|-----------|--|
| QTY / UNIT | 1 | MODEL USED ON | SBS-11 | ASS'Y NO. | |
| APPLICATION | | CODE | S401-451 | | |

NOTICE TO PERSONS RECEIVING THIS DRAWING
THE TECHNICAL MATERIEL CORPORATION claims proprietary right in the material disclosed hereon. This drawing is issued in confidence for engineering information only and may not be reproduced or used to manufacture anything shown hereon without permission from THE TECHNICAL MATERIEL CORPORATION to the user. This drawing is loaned for mutual assistance and is subject to recall at any time.

| | |
|-------------|-----------|
| DECIMALS | FRACTIONS |
| X ± .05 | 1/64 |
| .XX ± .01 | ANGLES |
| .XXX ± .005 | 0° - 30' |

UNLESS OTHERWISE SPECIFIED DIMENSIONS ARE IN INCHES AND INCLUDE CHEMICALLY APPLIED OR PLATED FINISHES
MATERIAL: 064 THICK
ALUMINUM 5052-H32
FINISH S404 YELLOW
IRIDITE

UNLESS OTHERWISE SPECIFIED:

- USE MATERIAL THICKNESS FOR MAXIMUM RADII ON ALL BENDS.
- ALL ANGULAR BENDS 90 DEGREES.
- REMOVE ALL BURRS AND SHARP EDGES.
- MOUNT INSERTS AFTER FINISHING.

LOCATING BASE LINES