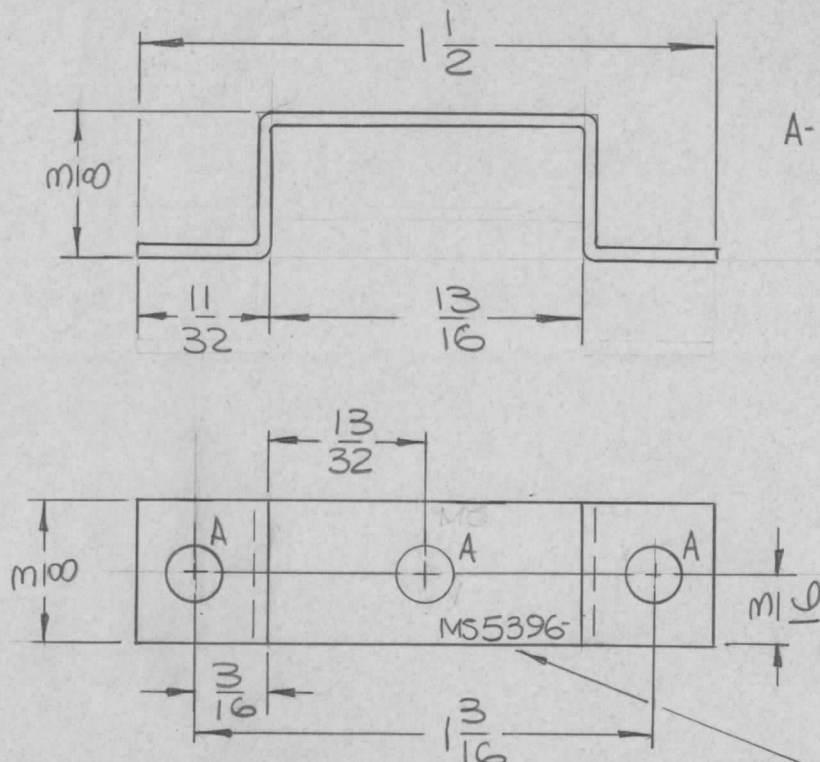


APPLICATION			REVISIONS						
QTY	MODEL USED ON	ASS'Y NO.	LTR	DESCRIPTION	DATE	E.M.N.NO	DRAFT	CHKD	APPD
1	HFRR-4		X	EXP. RELEASE	5-29-68				
				ORIG. RELEASE FOR PROD.	11-6-68	Ø	R.G.		



HOLES:
A- $\frac{9}{64}$ DIA (3REQ.)

- UNLESS OTHERWISE SPECIFIED:
- 1- USE MATERIAL THICKNESS FOR MAXIMUM RADIUS ON ALL BENDS.
 - 2- ALL ANGULAR BENDS 90°.
 - 3- REMOVE ALL BURRS & SHARP EDGES.

MARK TMC P/N $\frac{1}{8}$ HIGH GOTHIC W/LATEST REV. LETTER.

UNLESS OTHERWISE SPECIFIED DIMENSIONS ARE IN INCHES AND INCLUDE CHEMICALLY APPLIED OR PLATED FINISHES		REQ'D	ITEM	PART NUMBER	DESCRIPTION	SYM.
DECIMALS .X ± .05 .XX ± .01 .XXX ± .005		FRACTIONS 1/64 ANGLES 0° - 30'		M. ZETENA	LIST OF MATERIAL SK3252-003-56	
MATERIAL .031 THK ALUMINUM 5052-H32		FINAL APPROVAL	DATE	THE TECHNICAL MATERIEL CORP. MAMARONECK, NEW YORK		
FINISH 3404 YEL IRIDITE		MECH. DES.	DATE	BRACKET, MTG FILTER		
3401-451		ELECT. DES.	DATE			
		CHECKED	DATE			
		DRAWN	DATE			

NOTICE TO PERSONS RECEIVING THIS DRAWING THE TECHNICAL MATERIEL CORPORATION claims proprietary right in the material disclosed hereon. This drawing is issued in confidence for engineering information only and may not be reproduced or used to manufacture anything shown hereon without permission from THE TECHNICAL MATERIEL CORPORATION to the user. This drawing is loaned for mutual assistance and is subject to recall at any time.				SIZE A	CODE IDENT. NO. 82679	DWG NO. MS5396	ISSUE Ø
SCALE 2:1		SHEET OF					