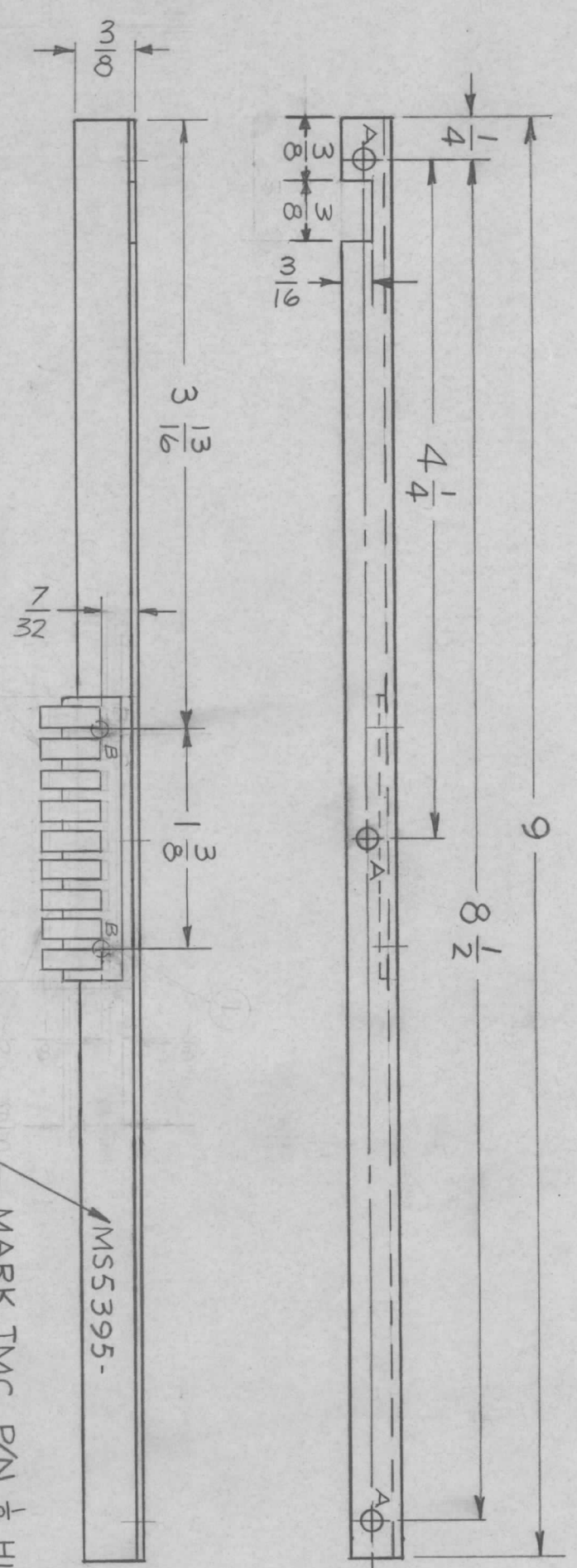


REVISIONS						
ZONE	LTR	DESCRIPTION	DATE	E.M.N.NO	DRAFT	CHKD
	X	EXP. RELEASE	5.20.68		K2	
	Ø	ORIG. RELEASE FOR PROD.	8-1-68	Ø	R.G.	



HOLE	DESCRIPTION	REQ
A	1/8 DIA.	3
B	5/64 DIA.	2

MARK TMC P/N  $\frac{1}{8}$  HIGH  
GOTHIC W/LATEST REV.  
LETTER

UNLESS OTHERWISE SPECIFIED:

1. USE MATERIAL THICKNESS FOR MAXIMUM RADIUS ON ALL BENDS
2. ALL ANGULAR BENDS 90 DEGREES
3. REMOVE ALL BURRS AND SHARP EDGES

QTY / UNIT	MODEL USED ON	ASS'Y NO.
1	CHG(-)-4	4505
1	MMX-( )	4505
1	VOX-7	4505

UNLESS OTHERWISE SPECIFIED DIMENSIONS ARE IN INCHES AND INCLUDE CHEMICALLY APPLIED OR PLATED FINISHES

DECIMALS	TOLS.	FRACTIONS	ANGLES
.X	± .05	1/64	
.XX	± .01		
.XXX	± .005		0° - 30'

ALUMINUM 5052-H32  
FINISH S404  
YEL IRIDITE

REQ'D ITEM	PART NUMBER	DESCRIPTION	SYM.
1	FP199-4	CONTACT, ELEC	B
2	EY100-5	EYELET, MTL	B

THE TECHNICAL MATERIEL CORP.  
MAMARONECK, NEW YORK

STIFFENER, P.C. BOARD

NOTICE TO PERSONS RECEIVING THIS DRAWING  
THE TECHNICAL MATERIEL CORPORATION claims proprietary right in the material disclosed hereon. This drawing is issued in confidence for engineering information only and may not be reproduced or used to manufacture anything shown hereon without permission from THE TECHNICAL MATERIEL CORPORATION to the user. This drawing is loaned for mutual assistance and is subject to recall at any time.

APPLICATION  
CODE S401-451

DATE 8-7-68  
DATE 5.20.68

SCALE 1:1  
SHEET OF