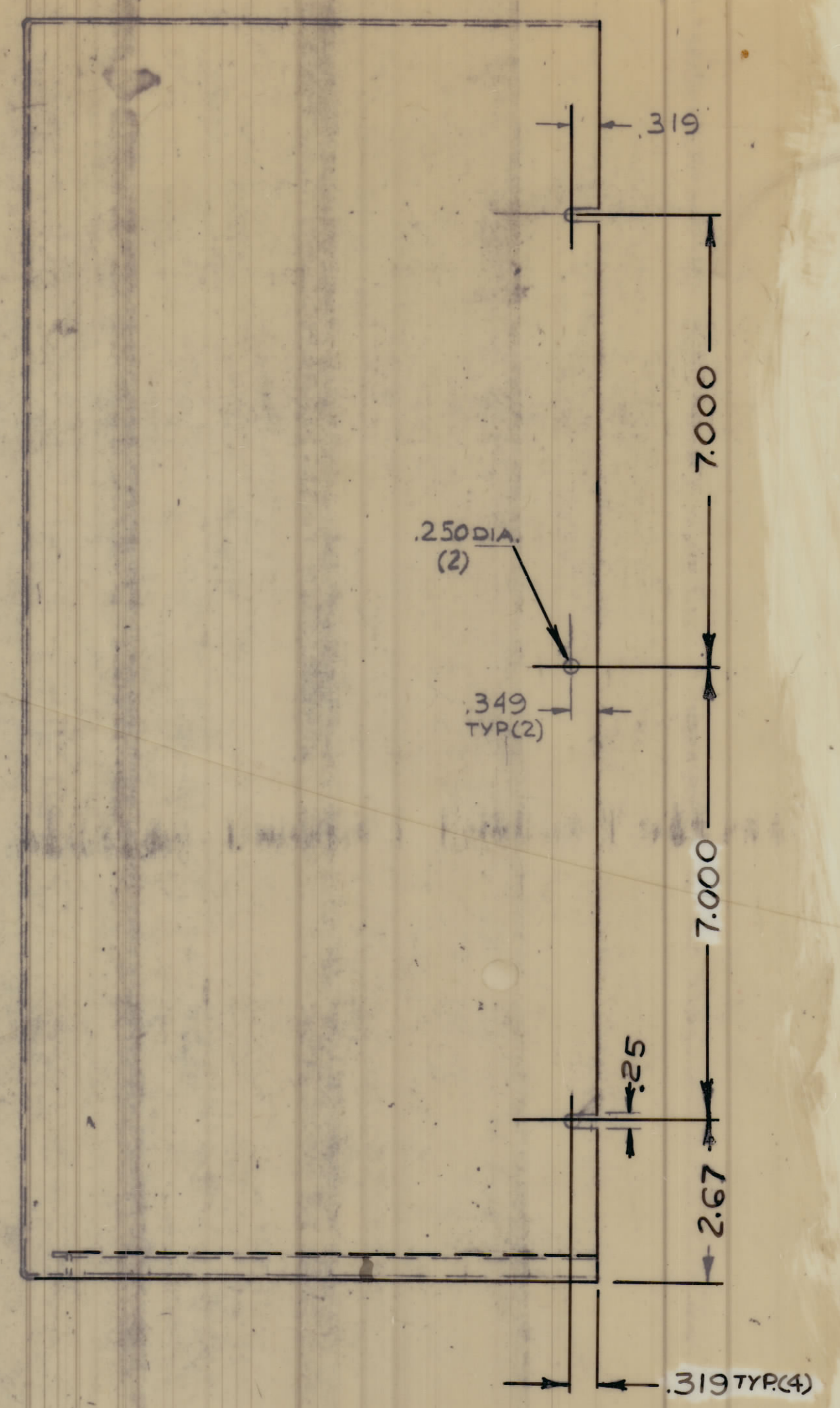


REVISIONS						
ZONE	LTR	DESCRIPTION	DATE	EM	NO	DRAFT
	X	EXP. RELEASE	3-6-68			PH
	XI	REVISED & UPDATED	1/10/69			PH
	0	ORIG. RELEASE FOR PRODUCTION	1/10/69			R.G.
	A	ADDED A & B HOLES	5-19-71	20344	R	PH

HOLE	DESCRIPTION	REQD
A	1 3/4 DIA	11
B	11/64 DIA	10



NOTE:
 1. ZINC CHROMATE PRIMER, PRIME ALL OVER
 PRIMER TO MATCH BLUE S-520.
 2. PAINT TMC BLUE TEXTURE S-520
 OUTSIDE ONLY.

QTY. REQ.	ITEM	PART NO.	DESCRIPTION	SYMBOL
2	2	TEFLON TAPE	3/16 W x 8.44 LG x .010 THK, ADHESIVE	
1	1	M3231-1	HOUSING (18 GA. STL)	

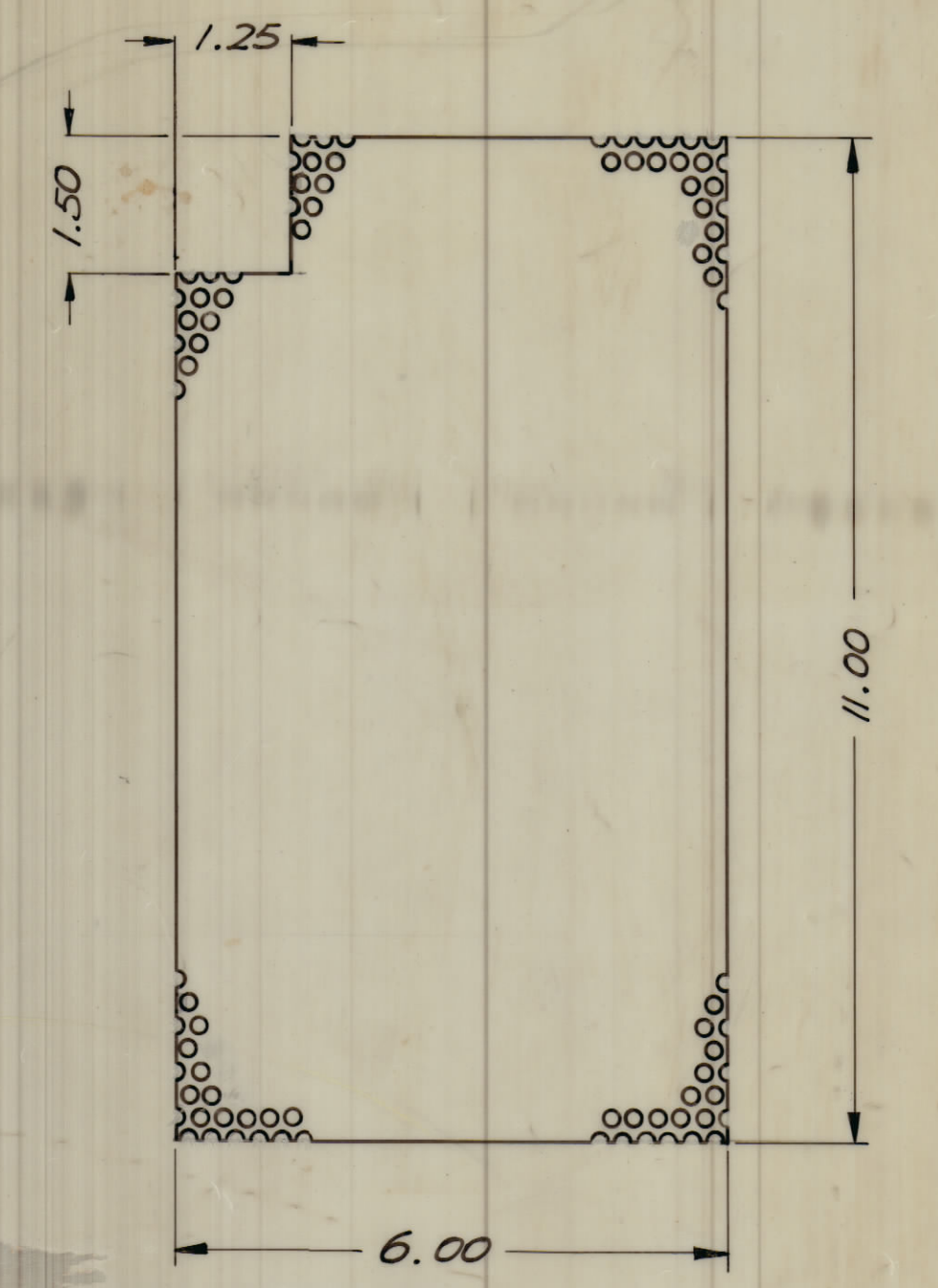
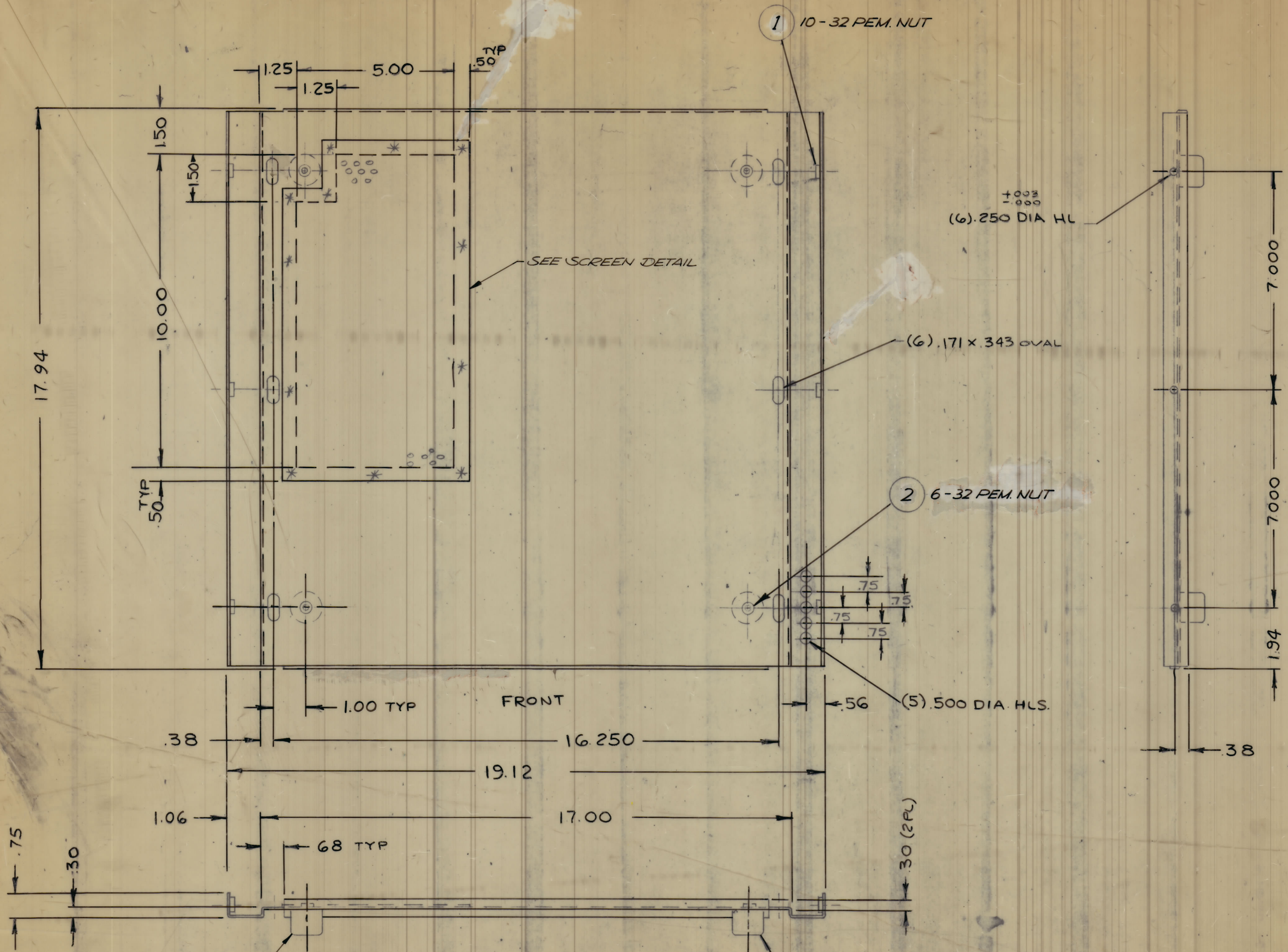
FINAL APPROVAL		DATE		THE TECHNICAL MATERIEL CORP.	
MECH. DES.	EP	1/10/69		MAMARONECK, NEW YORK	
ELECT. DES.	EP	1/10/69		CABINET, ELECTRICAL COMPONENT (C.P.A.-2) (HOUSING)	
CHECKED	PH	1-7-69			
DRAWN	PH	3-5-68		SIZE	CODE IDENT. NO. DWG. NO.
				82679	MS 5373

MATERIAL	FINISH	UNLESS OTHERWISE SPECIFIED DIMENSIONS ARE IN INCHES AND INCLUDE CHEMICALLY APPLIED OR PLATED FINISHES
18 GA STEEL	AS NOTED	

DECIMALS	FRACTIONS	TOLERANCES
0.0009	± 1/64	
0.0018	± 1/32	
0.0036	± 1/16	
0.0072	± 3/32	
0.0144	± 1/8	
0.0288	± 3/16	
0.0576	± 1/4	
0.1152	± 3/8	
0.2304	± 1/2	
0.4608	± 3/4	
0.9216	± 1	

NOTICE TO PERSONS RECEIVING THIS DRAWING
 THE TECHNICAL MATERIEL CORPORATION claims proprietary right in the material disclosed hereon. This drawing is issued in confidence for engineering information only and may not be reproduced or used to manufacture anything shown hereon without permission from THE TECHNICAL MATERIEL CORPORATION to the user. This drawing is loaned for mutual assistance and is subject to recall at any time.

REVISIONS						
ZONE	LTR	DESCRIPTION	DATE	E.M.N.O.	DRAET	CHKD. APPD.
X		EXP RELEASE	3/6/68			
XI		REVISED & UPDATED	1/10/69			
Ø		ORIG. RELEASE FOR PRODUCTION	1/10/69			R.G.
A		SEE SHT 1 OF 2	5-19-71	20344	R.F.	CO PBA



SCREEN DETAIL
 MATERIAL: 18 GA. STEEL, PERFORATED
 .140 DIA. HOLES ON 3/16
 STAGGERED CENTERS

NOTE:
 1. ZINC CHROMATE PRIMER, PRIME ALL OVER
 2. PRIMER TO MATCH TMC BLUE S-520

CABINET BUMPER, HEAVY DUTY
 (W/ STEEL WASHER INSERT)
 MOLDED NEOPRENE. 1" DIA., 13/16" HIGH
 COLOR: BLACK
 REF.: JAN HARDWARE MFG CO.
 CATALOG NO.: AK576-4
 (4 REQ.)

3
 4 MACHINE SCREW, PHILIP HEAD
 6-32 x 1/2 LONG, STEEL, CADMIUM PLATE

QTY. REQ.	ITEM	PART NO.	DESCRIPTION	SYMBOL
4	4	#6-32 x 1/2"	PHM SCREW (STL CAD PL)	
4	3	AK576-4	BUMPER (NEOP BLACK)	
4	2	S-632-2	PEM DUT #6-32	
6	1	SS-032-2	PEM NUT #10-32	

FINAL APPROVAL		DATE		LIST OF MATERIAL	
[Signature]		1/10/69		THE TECHNICAL MATERIEL CORP. MAMARONECK, NEW YORK	
MECH. DES.		DATE		CABINET ELECTRICAL COMPONENT (CPA-2) (BASE)	
ELECT. DES.		DATE			
CHECKED		DATE			
DRAWN		DATE			

MATERIAL	#16 GA STEEL
FINISH	AS NOTED

NOTICE TO PERSONS RECEIVING THIS DRAWING
 THE TECHNICAL MATERIEL CORPORATION claims proprietary right in the material disclosed herein. This drawing is issued in confidence for engineering information only and may not be reproduced or used to manufacture anything shown hereon without permission from THE TECHNICAL MATERIEL CORPORATION to the user. This drawing is loaned for mutual assistance and is subject to recall at any time.

UNLESS OTHERWISE SPECIFIED DIMENSIONS ARE IN INCHES AND INCLUDE CHEMICALLY APPLIED OR PLATED FINISHES	SIZE	CODE IDENT. NO.	DWG NO.	ISSUE
DECIMALS: 3/16 ± 0.003, 1/32 ± 0.002, 1/64 ± 0.001	82679	MS5373		A
FRACTIONS: 1/8 ± 0.005, 3/16 ± 0.004, 1/4 ± 0.005, 5/16 ± 0.004, 3/8 ± 0.005, 7/16 ± 0.004, 1/2 ± 0.005, 5/8 ± 0.004, 3/4 ± 0.005, 7/8 ± 0.004	SCALE			SHEET 2 OF 2