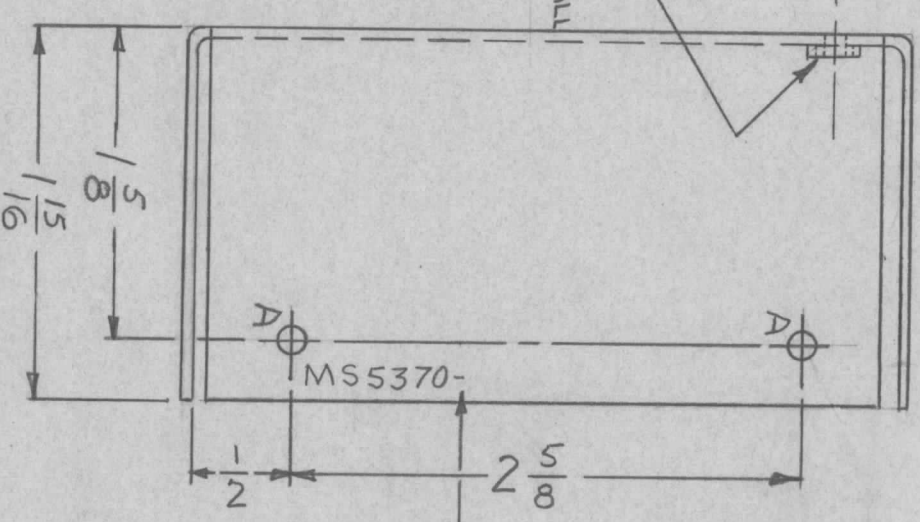
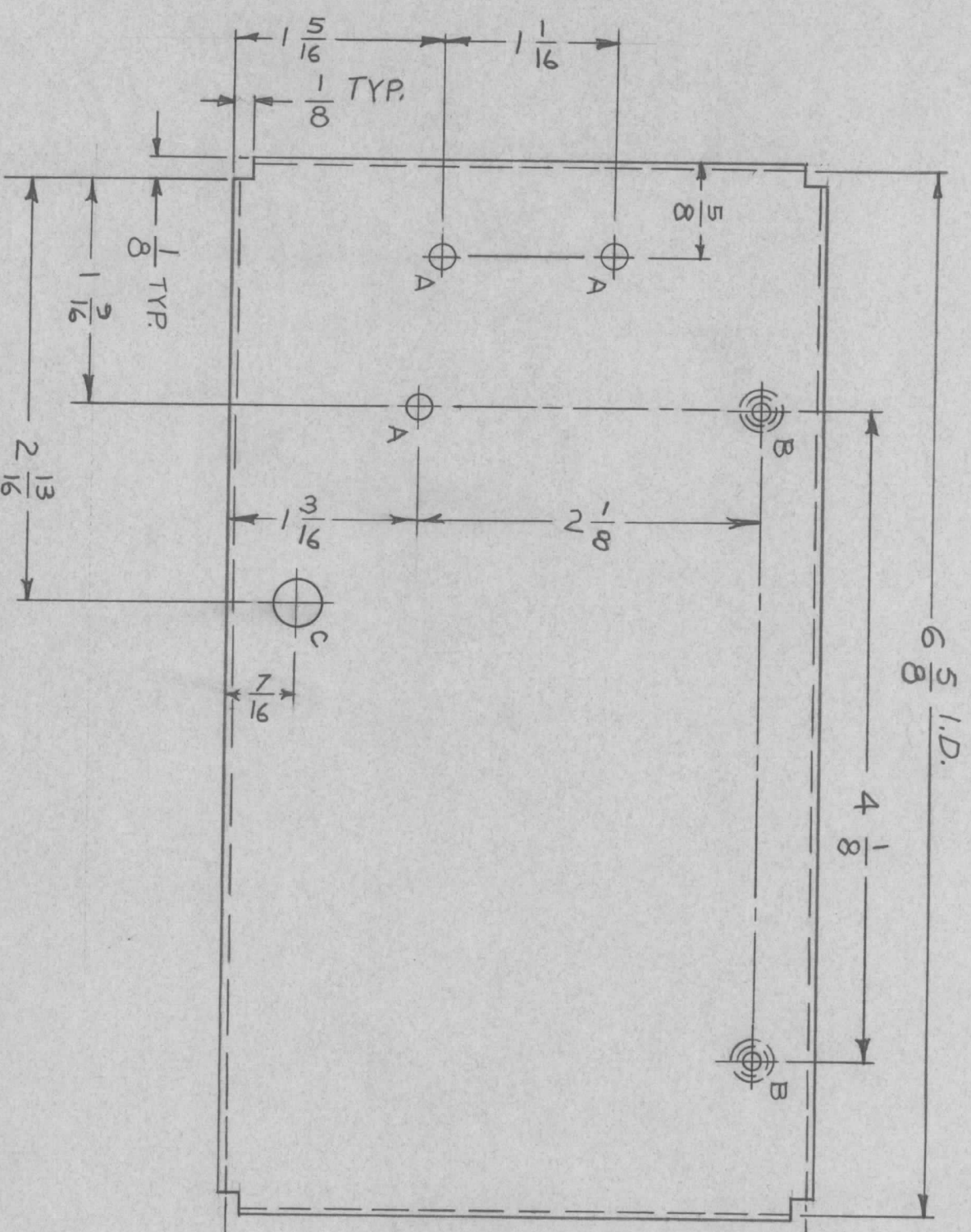


REVISIONS						
ZONE	LTR	DESCRIPTION	DATE	E.M.N.NO	DRAFT	CHKD
X		EXP. RELEASE	3.4.68	-		
Ø		ORIG. RELEASE FOR PROD	3.14.68	Ø	R.G.	
A		ADD CHART & ITM 1	1.6.70	19696	KD	



HOLE	DESCRIPTION	REQ
A	9/64 Dia	7
B	.250-.253 Dia	2
C	9/32 Dia	1

MARK TMC P/N 1/8 HIGH
GOTHIC W/LATEST
REV. LETTER

OPPOSITE SIDE IDENTICAL

REF: MS5369

UNLESS OTHERWISE SPECIFIED
DIMENSIONS ARE IN INCHES
AND INCLUDE CHEMICALLY APPLIED
OR PLATED FINISHES

DECIMALS
.X ± .05
.XX ± .01
.XXX ± .005

FRACTIONS
1/64
ANGLES
0°-30'

MATERIAL, .051 THICK
ALUMINUM 5052-H32
FINISH S404 YEL
IRIDITE

REQ'D ITEM	PART NUMBER	DESCRIPTION	SYM.
2	1	NT129-1032-3	NUT, PLAIN, SPLINE
1	1	MS5370-	

THE TECHNICAL MATERIEL CORP.
MAMARONECK, NEW YORK

COVER, MTG, PLATE

SIZE	CODE IDENT. NO.	DWG NO.	ISSUE
B	82679	MS5370	A

QTY / UNIT	MODEL USED ON	ASSY NO.
1	CHG ()-4	
APPLICATION		
CODE	S401-451	
A		

NOTICE TO PERSONS RECEIVING THIS DRAWING
THE TECHNICAL MATERIEL CORPORATION claims proprietary right in the material
disclosed hereon. This drawing is issued in confidence for engineering information only
and may not be reproduced or used to manufacture anything shown hereon without
permission from THE TECHNICAL MATERIEL CORPORATION to the user. This drawing is
loaned for mutual assistance and is subject to recall at any time.

- UNLESS OTHERWISE SPECIFIED
1. USE MATERIAL THICKNESS FOR MAXIMUM RADIUS ON ALL BENDS.
 2. ALL ANGULAR BENDS 90 DEGREES.
 3. REMOVE ALL BURRS & SHARP EDGES.