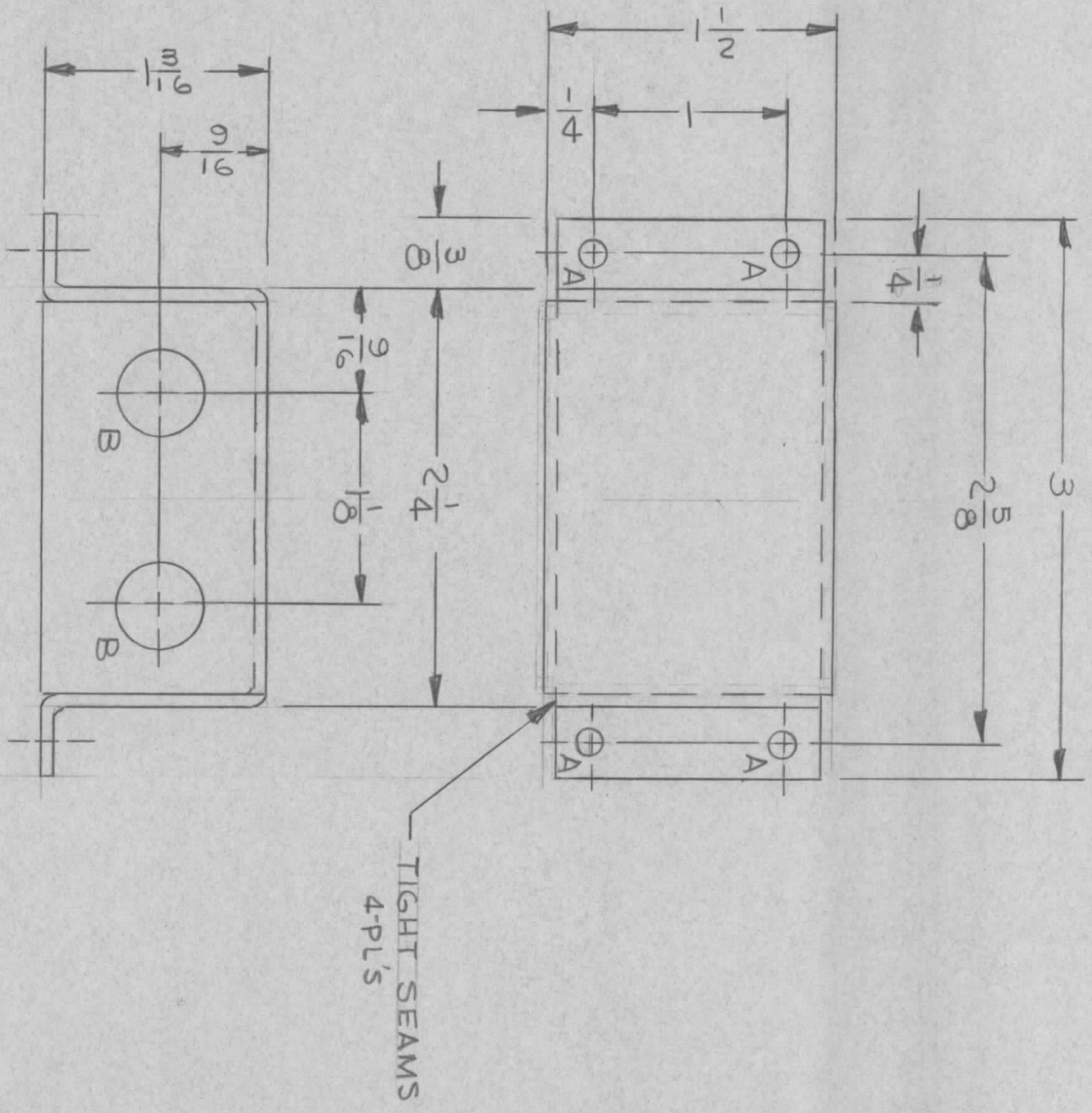


REVISIONS						
ZONE	LTR	DESCRIPTION	DATE	E.M.N.NO	DRAFT	CHKD
Ø		ORIG. RELEASE FOR PROD	11-7-68	Ø	R.G.	

HOLE LEGEND		
HOLE	DESCRIPTION	REQ
A	9/64 DIA	4
B	1/2 DIA	2



QTY / UNIT	1	MODEL USED ON	HFSR-4	ASS'Y NO.	
APPLICATION		CODE	SHA 238		

NOTICE TO PERSONS RECEIVING THIS DRAWING
 THE TECHNICAL MATERIEL CORPORATION claims proprietary right in the material disclosed hereon. This drawing is issued in confidence for engineering information only and may not be reproduced or used to manufacture anything shown hereon without permission from THE TECHNICAL MATERIEL CORPORATION to the user. This drawing is loaned for mutual assistance and is subject to recall at any time.

UNLESS OTHERWISE SPECIFIED DIMENSIONS ARE IN INCHES AND INCLUDE CHEMICALLY APPLIED OR PLATED FINISHES	
DECIMALS	FRACTIONS
X ± .05	1/64
.XX ± .01	TOLS.
.XXX ± .005	ANGLES
	90° .30'
MATERIAL	
OOSTHR ALUM	
S052-H32	
FINISH	
YELLOW IRIDIUM	
S404	

REQ'D ITEM	PART NUMBER	DESCRIPTION	SYM.
		LIST OF MATERIAL SK 3252-004-10	
<p align="center">THE TECHNICAL MATERIEL CORP. MAMARONECK, NEW YORK</p>			
DATE	DATE	DATE	DATE
11/7/68	9/13/67	10/30/68	
FINAL APPROVAL	ELECT. DES.	CHECKED	DRAWN
<i>[Signature]</i>	<i>[Signature]</i>	<i>[Signature]</i>	<i>[Signature]</i>
MECH. DES.			
<i>[Signature]</i>			
SIZE	CODE IDENT. NO.	DWG NO.	ISSUE
B	82679	MS 5349	Ø
SCALE		SHEET	OF