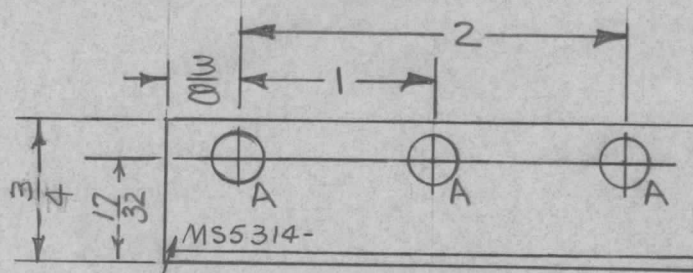
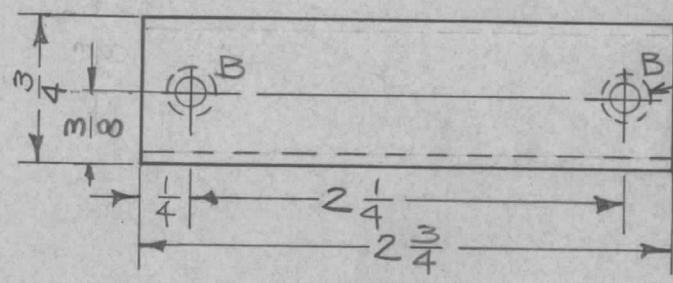


APPLICATION			REVISIONS							
QTY	MODEL USED ON	ASS'Y NO.	LTR	DESCRIPTION	DATE	E.M.N.NO	DRAFT	CHKD	APPD	
1	SWCD-3K		X	EXP. RELEASE	1.3.68		A.P.			
			Ø	ORIGINAL RELEASE FOR PRODUCTION	5.7.68	Ø				



HOLE	DESCRIPTION	REQ
A	1/4 DIA.	3
B	.191-.194 DIA.	2

MARK TMC P/N 1/8 HIGH
GOTHIC W/LATEST
REV. LETTER



1 MOUNT IN "B" HOLES
AS SHOWN AFTER
FINISHING

UNLESS OTHERWISE SPECIFIED:

1. USE MATERIAL THICKNESS FOR MAXIMUM RADIUS ON ALL BENDS.
2. ALL ANGULAR BENDS 90 DEGREES.
3. REMOVE ALL BURRS & SHARP EDGES.
4. MOUNT INSERTS AFTER FINISHING

REQ'D	ITEM	PART NUMBER	DESCRIPTION	SYM.
2	1	NT129-632-4	NUT, PLAIN, SPLINE	B

BUDETTI LIST OF MATERIAL			
FINAL APPROVAL		DATE	
MECH. DES.		DATE	
ELECT. DES.		DATE	
CHECKED		DATE	
DRAWN		DATE	
A. PETROCCA		1.3.68	
THE TECHNICAL MATERIEL CORP. MAMARONECK, NEW YORK BRACKET, RESISTOR MOUNT			

UNLESS OTHERWISE SPECIFIED DIMENSIONS ARE IN INCHES AND INCLUDE CHEMICALLY APPLIED OR PLATED FINISHES	
DECIMALS	FRACTIONS
.X ± .05	1/64
.XX ± .01	TOLS. ANGLES
.XXX ± .005	0° - 30'
MATERIAL .064 ALUMINUM 5052-H32	
FINISH S404-YEL. IRIDITE	
S401-451	

NOTICE TO PERSONS RECEIVING THIS DRAWING
THE TECHNICAL MATERIEL CORPORATION claims proprietary right in the material disclosed hereon. This drawing is issued in confidence for engineering information only and may not be reproduced or used to manufacture anything shown hereon without permission from THE TECHNICAL MATERIEL CORPORATION to the user. This drawing is loaned for mutual assistance and is subject to recall at any time.

SIZE	CODE IDENT. NO.	DWG NO.	ISSUE
A	82679	MS5314	Ø
SCALE DO NOT SCALE		SHEET	OF