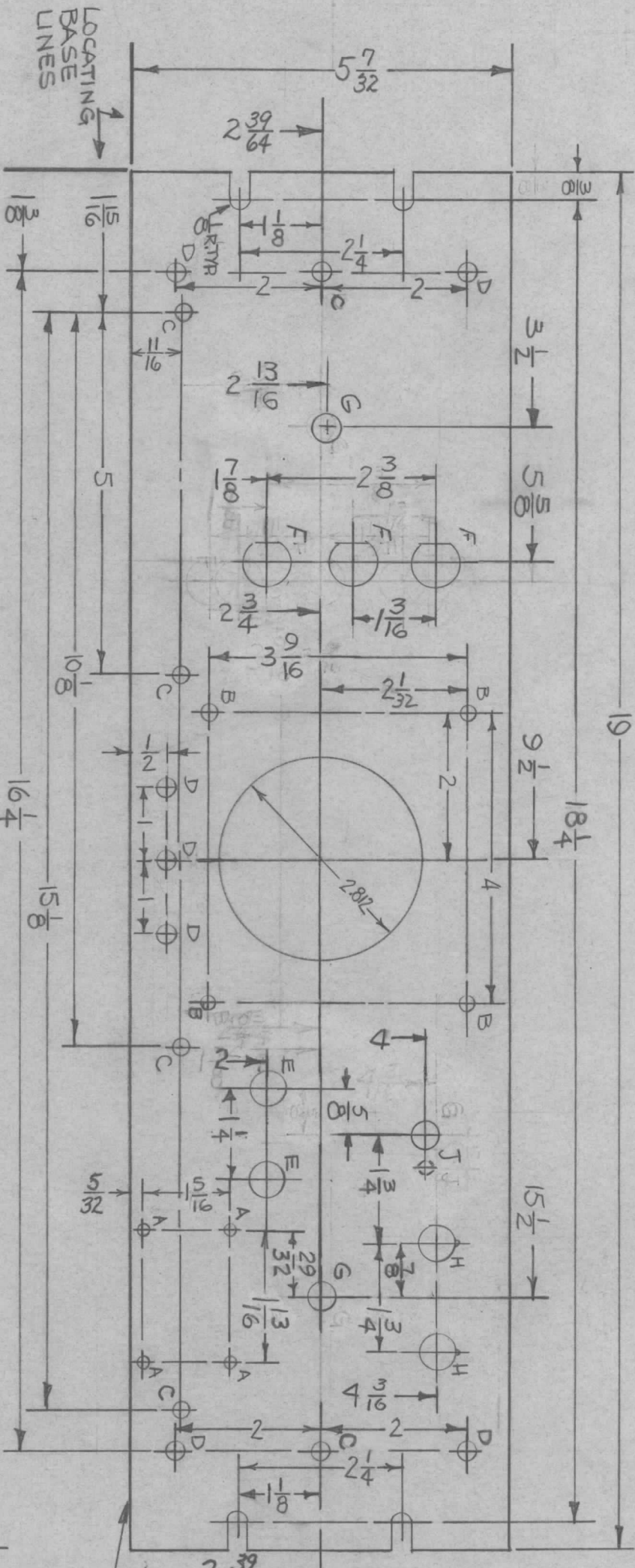


REVISIONS							
ZONE	LTR	DESCRIPTION	DATE	E.M.N. NO	DRAFT	CHKD	APPD
	X1	ADD 'J' HOLE	1-5-68		A.P.		
	X2	2" C' HOLE S WERE "D" HOLES	1-30-68		A.P.		
	X3	ONE "G" HOLE RELOCATED	4-22-68		G.P.L.		
		ORIGINAL RELEASE FOR PRODUCTION	5-7-68				



HOLE	DESCRIPTION	REQ
A	.076 DIA.	4
B	11/64 DIA.	4
C	13/64 DIA.	6
D	15/64 DIA.	7
E	1/2 DIA.	2
F	SEE DETAIL	3
G	3/8 DIA.	2
H	SEE DETAIL	2
J	SEE DETAIL	1

MARK TMC P/M(MSS 5310) 1/8 HIGH
GOTHIC W/LATEST REV. LETTER
ON REAR.

- FINISH NOTES:**
- S404 ~ YEL. IRIDITE
 - S114 ~ ZINC CHROMATE PRIMER
 - S115 ~ SMOOTH GRAY ENAMEL
 - PRIME AND PAINT FRONT AND EDGES ONLY.

- MACHINING:**
- MILL ALL EDGES.
 - HOLES MUST BE DRILLED, UNLESS OTHERWISE SPECIFIED.
 - LATERAL BOW OF PANEL MUST BE KEPT TO .031 TOLERANCE.
 - PANEL MUST BE FREE OF ALL MACHINING MARKS, GOUGES AND SCRATCHES. IF NECESSARY, SAND FRONT OF PANEL WITH NO. 120 GRIT SANDPAPER.

QTY / UNIT	1	MODEL USED ON	SWCD-3K	ASS'Y NO.	
APPLICATION		CODE	A	S401-451	

DECIMALS	FRACTIONS
.X ± .05	1/64
.XX ± .01	ANGLES
.XXX ± .005	0° .30'
MATERIAL	
3/16 THK. ALUMINUM	
FINISH	
SEE NOTES	

REQ'D ITEM	PART NUMBER	DATE
	BUDETTI	

MECH. DES.	DATE
A. PETROCCA	12-5-67
ELECT. DES.	DATE
	5-3-68
CHECKED	DATE
	5-7-68
DRAWN	DATE
A. PETROCCA	12-5-67

LIST OF MATERIAL			
THE TECHNICAL MATERIEL CORP.			
MAMARONECK, NEW YORK			
PANEL, FRONT			
SIZE	CODE IDENT. NO.	DWG NO.	ISSUE
B	82679	MSS 5310	Ø
SCALE	BONOT	SHEET	OF