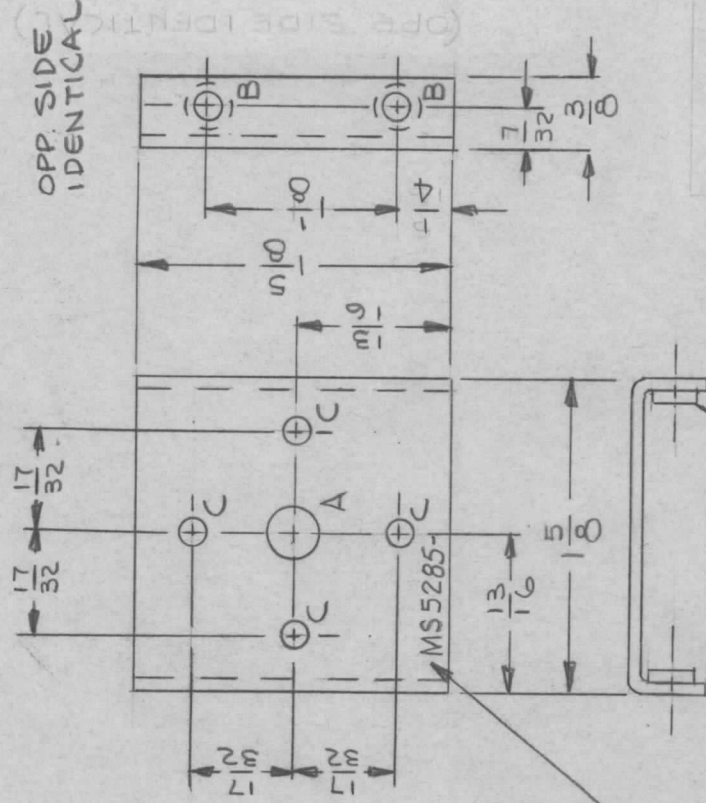


APPLICATION

REVISIONS

QTY	MODEL USED ON	ASSY NO.	LTR	DESCRIPTION	DATE	E.M.N.NO.	DRAFT	CHKD	APPD
5	MSAR-4		X	EXP. RELEASE	11/17/67		JL		
1	HFRR-4		Ø	ORIG. RELEASE FOR PROD.	11-6-68	Ø	R.G.		JLS



MARK TMC P/N
 $\frac{1}{8}$ HIGH GOTHIC
 W/LATEST REV.
 LETTER

1 MOUNT IN ALL
 "B" HOLES

HOLE	DESCRIPTION	REQ
A	13/32 DIA.	1
B	.161-.164 DIA.	4
C	5/32 DIA.	4

UNLESS OTHERWISE SPECIFIED:

1. USE MATERIAL THICKNESS FOR MAXIMUM RADIUS ON ALL BENDS
2. ALL ANGULAR BENDS 90 DEGREES
3. REMOVE ALL BURRS AND SHARP EDGES
4. MOUNT INSERTS AFTER FINISHING

REQ'D	ITEM	PART NUMBER	DESCRIPTION	SYM.
4	1	NT129-440-4	NUT, PLAIN, SPLINE	B
HOGAN (ZETENA)				
LIST OF MATERIAL SK 3252-005-13			THE TECHNICAL MATERIEL CORP.	
			MAMARONECK, NEW YORK	
SUPPORT, FRONT, LEDEX CHASSIS				
NOTICE TO PERSONS RECEIVING THIS DRAWING			DISCLOSED HEREON. THIS DRAWING IS ISSUED IN CONFIDENCE FOR ENGINEERING INFORMATION ONLY AND MAY NOT BE REPRODUCED OR USED TO MANUFACTURE ANYTHING SHOWN HEREON WITHOUT PERMISSION FROM THE TECHNICAL MATERIEL CORPORATION TO THE USER. THIS DRAWING IS LOANED FOR MUTUAL ASSISTANCE AND IS SUBJECT TO RECALL AT ANY TIME.	
FINISH APPROVAL			DATE	
MECH. DES.			DATE	
ELECT. DES.			DATE	
CHECKED			DATE	
DRAWN			DATE	
MATERIAL .063 THICK				
ALUMINUM 5052-H32				
FINISH S404				
YEL IRIDITE				
S401-451				
SIZE	CODE IDENT. NO.	DWG NO.	ISSUE	
A	82679	MS5285	Ø	
SCALE	1/1	SHEET	1	OF 1