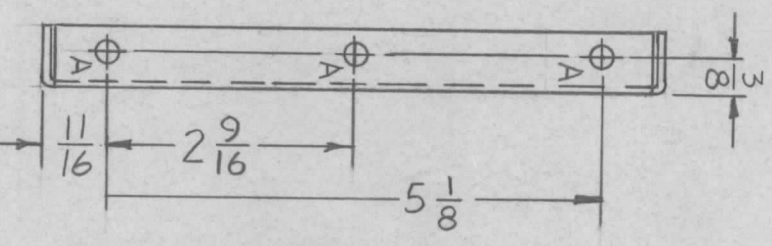
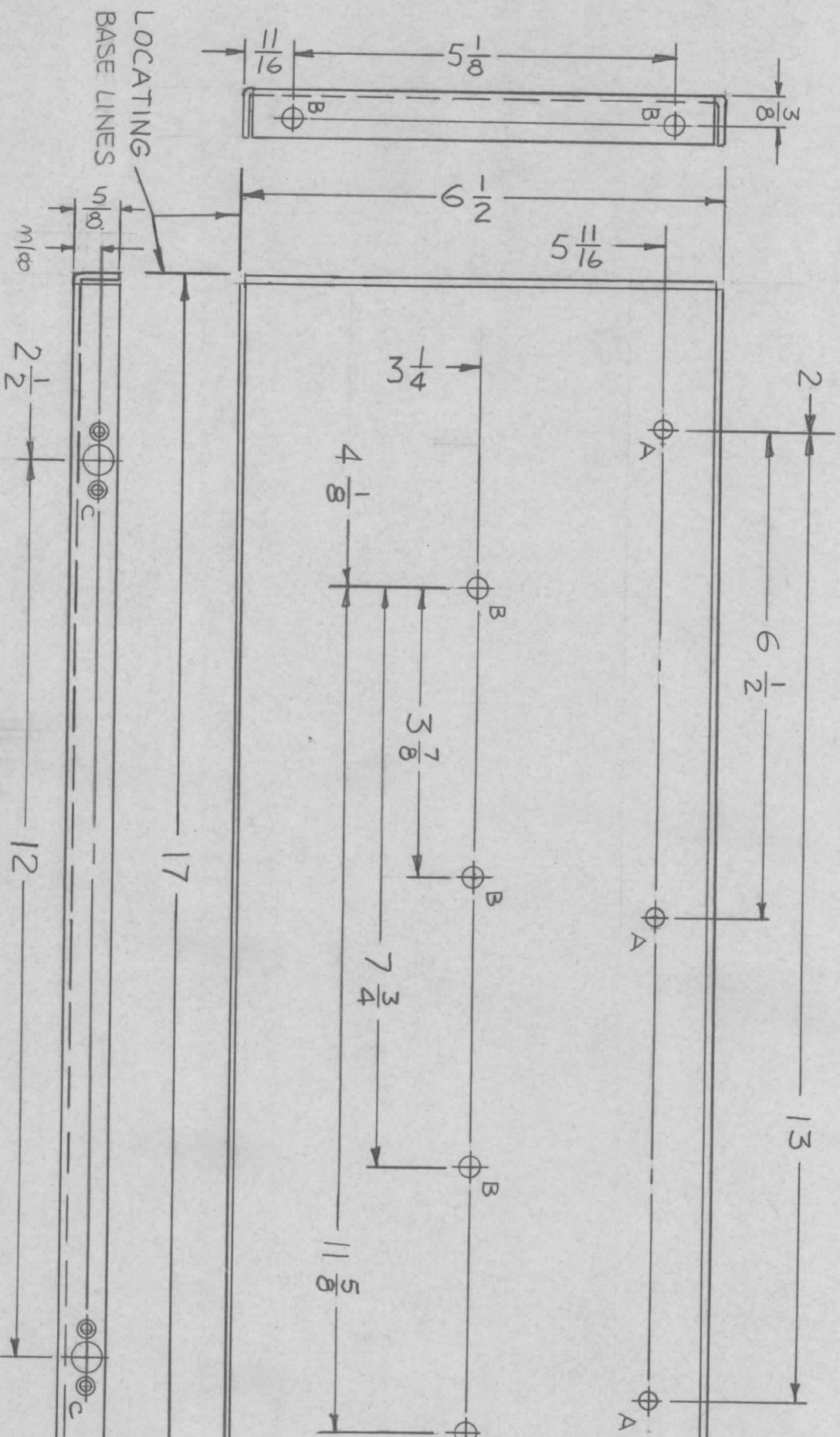


REVISIONS						
ZONE	LTR	DESCRIPTION	DATE	E.M.N. NO	DRAFT	CHKD
X		EXP. RELEASE	11-24-67	-	MS	MS
Ø		ORIGINAL RELEASE FOR PRODUCTION	4/1/68	Ø	MS	MS



HOLE	DESCRIPTION	REQ.
A	13/64 DIA.	6
B	15/64 DIA.	6
C	SEE DETAIL	4

MARK TMC P/N 1/8 HIGH
GOTHIC W/LATEST REV.
LETTER.

← .104 DIA. C'SINK
Ø2° TO .204 DIA.
(2 REQ.)
DETAIL "C"

OPP. SIDE IDENTICAL

UNLESS OTHERWISE SPECIFIED:

1. USE MATERIAL THICKNESS FOR MAXIMUM RADIUS ON ALL BENDS
2. ALL ANGULAR BENDS 90 DEGREES
3. REMOVE ALL BURRS AND SHARP EDGES

QTY / UNIT	1
MODEL USED ON	BCT-10KA
ASS'Y NO.	AX683
APPLICATION	
CODE	A
	S 401-451

NOTICE TO PERSONS RECEIVING THIS DRAWING
THE TECHNICAL MATERIEL CORPORATION claims proprietary right in the material disclosed hereon. This drawing is issued in confidence for engineering information only and may not be reproduced or used to manufacture anything shown hereon without permission from THE TECHNICAL MATERIEL CORPORATION to the user. This drawing is loaned for mutual assistance and is subject to recall at any time.

DECIMALS	FRACTIONS
X ± .05	1/64
.XX ± .01	ANGLES
.XXX ± .005	0° - 30'

UNLESS OTHERWISE SPECIFIED DIMENSIONS ARE IN INCHES AND INCLUDE CHEMICALLY APPLIED OR PLATED FINISHES

MATERIAL .081 THK ALUMINUM 5052-H32 FINISH S404 YEL. IRIDITE

REQ'D ITEM	PART NUMBER	DESCRIPTION	SYM.
F. BUDETTI		LIST OF MATERIAL SK 3290 - 5025	

FINAL APPROVAL	DATE
MECH. DES.	DATE
ELECT. DES.	DATE
CHECKED	DATE
DRAWN	DATE

THE TECHNICAL MATERIEL CORP.
MAMARONECK, NEW YORK

PLATE, SIDE, RIGHT

SIZE	CODE IDENT. NO.	DWG NO.	ISSUE
B	82679	MS 5241	Ø
SCALE	1:2	SHEET	OF