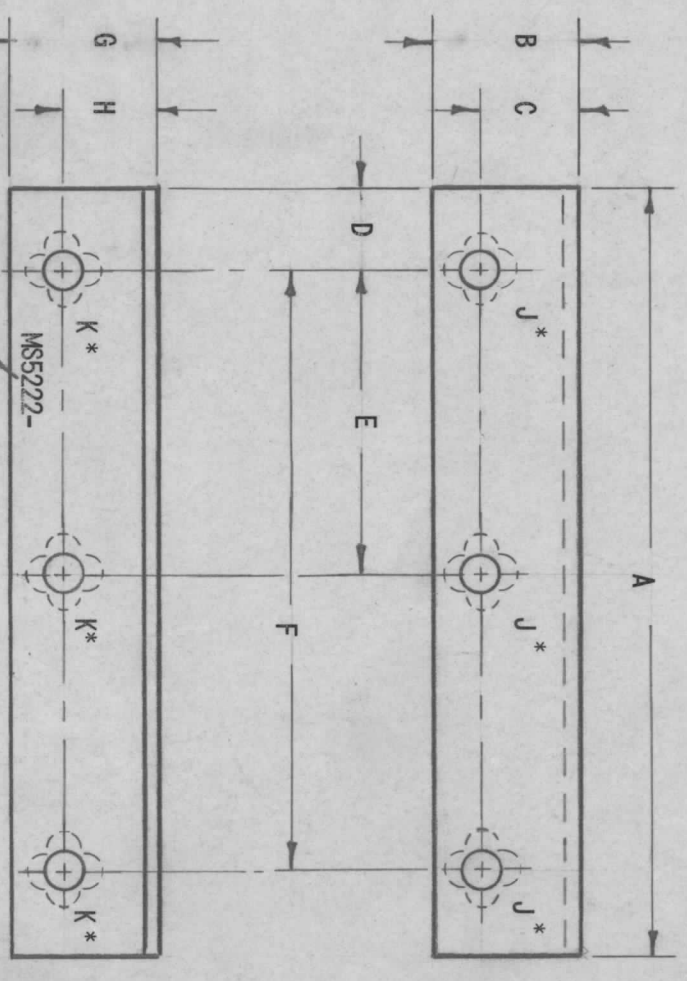


TMC P/N	A	B	C	D	E	F	G	H	J	K	MATERIAL	FINISH
MS5222-1	9-3/4	3/4	1/2	7/8	4	8	3/4	1/2	15/64	15/64	.063 ALUM 5052-H32	S404 YEL IRIDITE
-2	4	1	1/2	1/2	—	3	1	1/2	* 3/16 X 1/2	15/64	"	"
-3	3-1/4	2-3/4	2	1/2	—	2-1/4	1-1/4	5/8	* 1/4 X 1/2	* 1/4 X 1/2	"	"
-4	6	1	5/8	1	—	4	1	5/8	* 1/4 X 1/2	* 1/4 X 1/2	1/8 ALUM 5052-H32	"
-5	3	1/2	1/4	1/4	—	2-1/2	1/2	1/4	11/64	11/64	.050 ALUM 5052-H32	"
-6	12	3/4	—	1	—	10	7/8	1/2	—	3/16 X 1/2	.063 ALUM H32	S115 GREY
-7	4	3/4	3/8	1/2	—	3	3/4	3/8	15/64	15/64	.081 ALUM 5052-H32	S404 YEL IRIDITE

ZONE	LTR	DESCRIPTION	DATE	E.M.N.NO	DRAFT	CHKD	APPD
X		EXPERIMENTAL RELEASE	10/12/67		C.V.		
Ø		ORIGINAL RELEASE FOR PRODUCTION	4/1/68		HS		
A		MS5222-4 ADDED	9/17/69	19214	CV		FB
B		MS5222-5 ADDED	5/21/69	19442	GE		FB
C		MS 5222-6 ADDED	5-18-71	20361	RY		FB
D		MS5222-7 ADD	6-5-81	21906	C.B.L		FB



MARK TMC P/N
1/8 HIGH GOTHIC
WITH LATEST REV
LETTER

* = WHEN USING VERTICAL SLOTS SHOW ASTERISK WITH DIMENSIONS

- UNLESS OTHERWISE SPECIFIED:
1. USE MATERIAL THICKNESS FOR MAXIMUM RADIUS ON ALL BENDS
 2. ALL ANGULAR BENDS 90 DEGREES
 3. REMOVE ALL BURRS AND SHARP EDGES

STANDARD	BCT 10KA	MODEL USED ON	ASS'Y NO.
APPLICATION	CODE A	S1401-451	

QTY / UNIT	DECIMALS	FRACTIONS
	X ± .05	1/64
	.XX ± .01	ANGLES
	.XXX ± .005	0° - 30'

NOTICE TO PERSONS RECEIVING THIS DRAWING
THE TECHNICAL MATERIEL CORPORATION claims proprietary right in the material disclosed hereon. This drawing is issued in confidence for engineering information only and may not be reproduced or used to manufacture anything shown hereon without permission from THE TECHNICAL MATERIEL CORPORATION to the user. This drawing is loaned for mutual assistance and is subject to recall at any time.

REQ'D ITEM	PART NUMBER	DESCRIPTION	SYM.
F. BUDETTI			
LIST OF MATERIAL			
THE TECHNICAL MATERIEL CORP. MAMARONECK, NEW YORK			
BRACKET, ANGLE			
SIZE	CODE IDENT. NO.	DWG NO.	ISSUE
B	82679	MS 5222	D
SCALE		SHEET	OF

FINAL APPROVAL	DATE
<i>[Signature]</i>	4-9-68
MECH. DES.	DATE
<i>[Signature]</i>	4-2-68
ELECT. DES.	DATE
CHECKED	DATE
<i>[Signature]</i>	4-1-68
DRAWN	DATE
ENJ	10/5/67