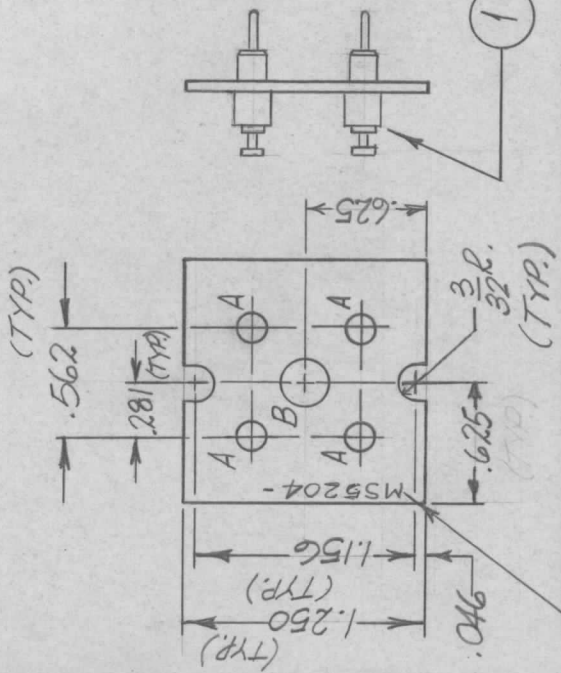


REVISIONS

| QTY | MODEL USED ON | ASS'Y NO. | LTR | DESCRIPTION | DATE | E.M.N.NO | DRAFT | CHKD | APPD |
|-----|---------------|-----------|-----|-------------------------|----------|----------|----------|------|------|
| 12 | VLRC - 1 | A4644 | X | EXP. RELEASE | 10.3.67 | | ADD. APT | | |
| | | | Ø | ORIG. RELEASE FOR PROD. | 10-12-67 | Ø | R.G. | | |



MARK TMC PT. NO. 1/8 HIGH
GOTHIC W/LATEST REV. LETTER.

NOTE:

- 1- DEBURR ONE EDGE OF HOLE BEFORE INSERTING ITEM 1.
- 2- MOUNT ITEM 1 AFTER PLATING.

REF: LD2255
BX221

| REQ'D | ITEM | PART NUMBER | DESCRIPTION | SYMBOL |
|--|-----------|-----------------------|--------------------------|---------|
| 4 | 1 | TE169-1 | TERM., FDTHRU, INSULATED | A |
| <p>MAET IN ENGO</p> <p>LIST OF MATERIAL SK3292-001-17</p> <p>THE TECHNICAL MATERIEL CORP. MAMARONECK, NEW YORK</p> <p>PLATE, COVER</p> | | | | |
| UNLESS OTHERWISE SPECIFIED DIMENSIONS ARE IN INCHES AND INCLUDE CHEMICALLY APPLIED OR PLATED FINISHES | | | | |
| DECIMALS | FRACTIONS | | | |
| .X ± .05 | 1/64 | | | |
| .XX ± .01 | ANGLES | | | |
| .XXX ± .005 | 0° - 30° | | | |
| MATERIAL .050 THK. HALF HARD BRASS | | | | |
| FINISH BRASS PLATE | | | | |
| S401-451 | | | | |
| FINAL APPROVAL | DATE | | | |
| MECH. DES. | DATE | | | |
| ELECT. DES. | DATE | | | |
| CHECKED | DATE | | | |
| DRAWN | DATE | | | |
| SIZE A | | CODE IDENT. NO. 82679 | DWG NO. MS5204 | ISSUE Ø |
| SCALE 1:1 | | SHEET | | OF |

NOTICE TO PERSONS RECEIVING THIS DRAWING: THE TECHNICAL MATERIEL CORPORATION claims proprietary right in the material disclosed hereon. This drawing is issued in confidence for engineering information only and may not be reproduced or used to manufacture anything shown hereon without permission from THE TECHNICAL MATERIEL CORPORATION to the user. This drawing is loaned for mutual assistance and is subject to recall at any time.