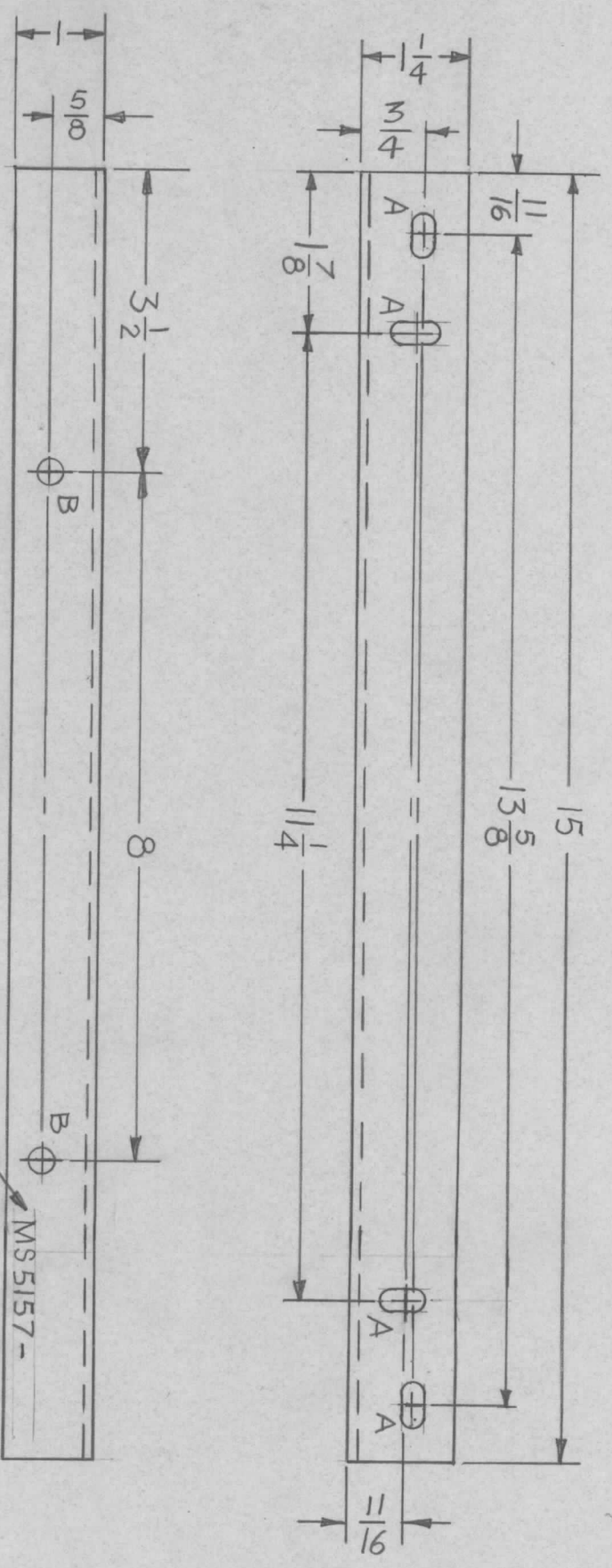


REVISIONS						
ZONE	LTR	DESCRIPTION	DATE	E.M.N.NO	DRAFT	CHKD
X		EXP. RELEASE	11.2.67		REV.	
Ø		ORIGINAL RELEASE FOR PRODUCTION	9/1/65	Ø	H.S.	



HOLE	DESCRIPTION	REQ
A	1/4 X 1/2 SLOT	4
B	9/32 DIA.	2

FINISH NOTES:
 1. S404 - IRIDITE 14-2 AL-COAT
 2. S114 - ZINC CHROMATE PRIMER
 3. S115 - SMOOTH GRAY ENAMEL
 OR
 PRIME AND PAINT PER CUSTOMER'S SPECIFICATIONS.

2	GPT-10KRL		
2	BCT-10KA		
QTY / UNIT		MODEL USED ON	ASS'Y NO.
APPLICATION		CODE	S401-451
		CODE	A

UNLESS OTHERWISE SPECIFIED DIMENSIONS ARE IN INCHES AND INCLUDE CHEMICALLY APPLIED OR PLATED FINISHES

DECIMALS .X ± .05
 .XX ± .01
 .XXX ± .005

FRACTIONS 1/64
 ANGLES 0°-30'

MATERIAL 1/8 THICK ALUMINUM 5052-H32

FINISH SEE NOTE

REQ'D ITEM	PART NUMBER	DESCRIPTION	SYM.
F. BUDETTI		LIST OF MATERIAL	SK 3290 - MS1015
FINAL APPROVAL	DATE	THE TECHNICAL MATERIEL CORP.	
MECH. DES.	DATE	MAMARONECK, NEW YORK	
ELECT. DES.	DATE	SUPPORT, MTG, RESISTOR	
CHECKED	DATE	SIZE	CODE IDENT. NO.
DRAWN	DATE	B	82679
		SCALE	DWG NO.
		1:2	MS 5157
		SHEET	ISSUE
		OF	Ø