

APPLICATION

QTY	MODEL USED ON	TMC PART NO.	ASS'Y NO.	LTR
2	RTH-3	MS5151-1		X
2	RTPH-3	MS5151-2		X1
2	RTMU-4	MS5151-2		X2
2	RTTD-5	MS5151-2		X3
2	SWCA-3K	MS5151-2		Ø

REVISIONS

DESCRIPTION	DATE	E.M.N.NO	DRAFT	CHKD	APPD
EXP. RELEASE	9-5-67		G.D.L.	M.Y.	J.P.C.
RTTD-5 ADDED	8/4/68	-1-			
SWCA-3K ADDED	9/18/68	X 2			
SWCA-3K WAS MS5151-1	9/19/68	X 3			
ORIG. RELEASE FOR PROD.	11-20-68	Ø	R.G.		J.P.C.

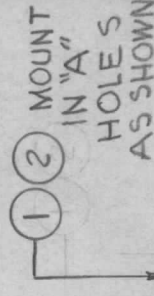
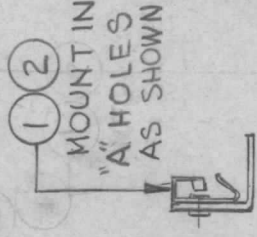
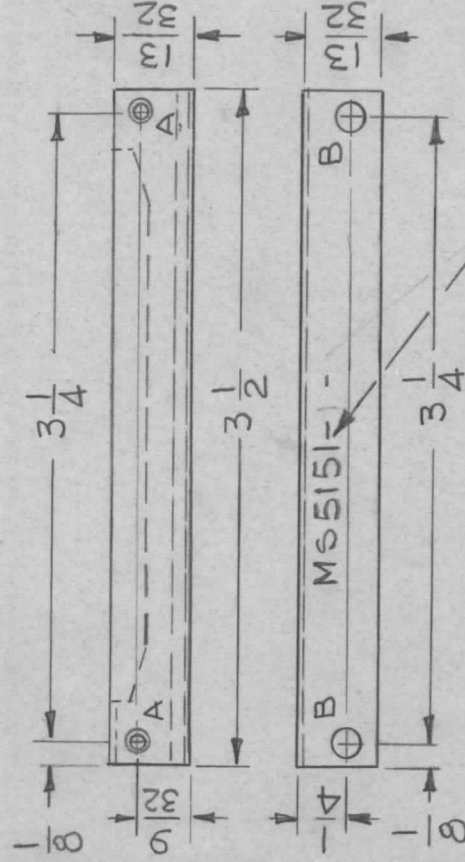
UNLESS OTHERWISE SPECIFIED:

1. USE MATERIAL THICKNESS FOR MAXIMUM RADIUS ON ALL BENDS
2. ALL ANGULAR BENDS 90 DEGREES
3. REMOVE ALL BURRS AND SHARP EDGES
4. MOUNT INSERTS AFTER FINISHING

HOLE

A -.067 DIA 2 REQ.

B - 9/64 DIA 2 REQ.



MS5151-1

MS5151-2

SEE APPLICATION CHART

SEE APPLICATION CHART

MARK TMC P/NO 1/8 HIGH
GOTHIC W/LATEST
REV. LETTER

1EA	2	CU157-4	RETAINER PC BOARD	A
2EA	1	EY100-5	EYELET, MTL	A
REQ'D	ITEM	PART NUMBER	DESCRIPTION	SYM.

F. EATON

LIST OF MATERIAL SK3252-007-9

FINAL APPROVAL	DATE
<i>J. De Marco</i>	11/19/68
MECH. DES.	DATE
	2/4/68
ELECT. DES.	DATE
	9-5-67
CHECKED	
<i>J. De Marco</i>	
DRAWN	
G.D.L.	

UNLESS OTHERWISE SPECIFIED
DIMENSIONS ARE IN INCHES
AND INCLUDE CHEMICALLY APPLIED
OR PLATED FINISHESDECIMALS FRACTIONS
X ± .05 1/64
.XX ± .01 ANGLES
.XXX ± .005 0°-30°MATERIAL .031 THK
ALUMINUM 5052-H32FINISH
S404 YEL. IRIDITE

S401-451

THE TECHNICAL MATERIEL CORP.

MAMARONECK, NEW YORK

BRACKET, MTG. RETAINER PC BD

NOTICE TO PERSONS RECEIVING THIS DRAWING

THE TECHNICAL MATERIEL CORPORATION claims proprietary right in the material disclosed hereon. This drawing is issued in confidence for engineering information only and may not be reproduced or used to manufacture anything shown hereon without permission from THE TECHNICAL MATERIEL CORPORATION to the user. This drawing is loaned for mutual assistance and is subject to recall at any time.

SIZE CODE IDENT. NO. DWG NO.

A 82679 MS5151-

ISSUE

Ø

SCALE 1:1

SHEET

OF