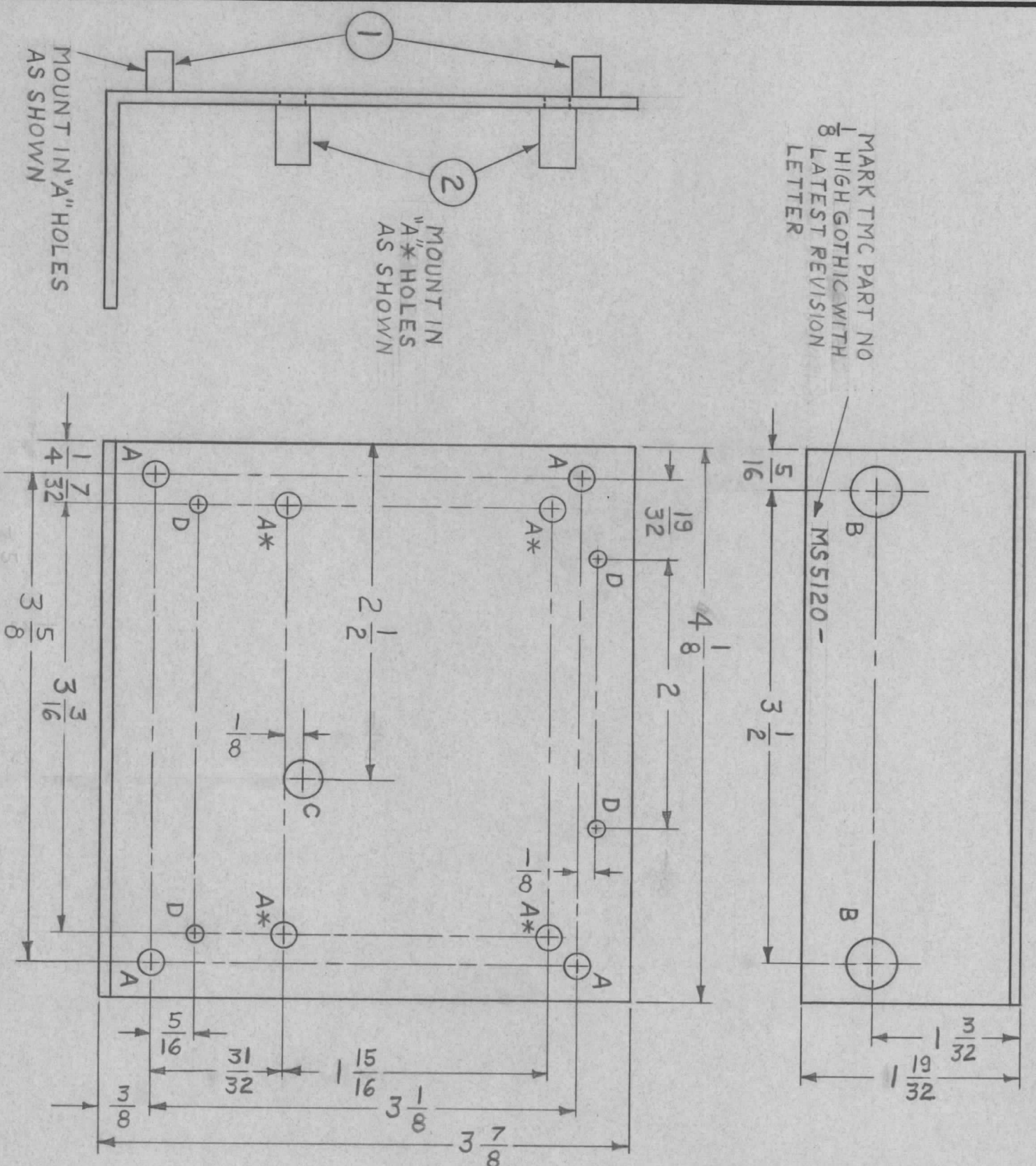


REVISIONS							
ZONE	LTR	DESCRIPTION	DATE	E.M.N. NO	DRAFT	CHKD	APPD
X		EXPERIMENTAL RELEASE	5-29-67		L.A.K.		
Ø		ORIG. RELEASE FOR PROD.	6-2-67		Ø	RG	

MARK TMC PART NO
1
HIGH GOTHIC WITH
8
LATEST REVISION
LETTER



HOLE	DESCRIPTION	REQ
A	.189 DIA	8
B	3/8 DIA	2
C	9/32 DIA	1
D	9/64 DIA	4

REQ'D ITEM	PART NUMBER	DESCRIPTION	SYM.
4	TE108-19	NUT, PLAIN, SPLINE	A*
4	TE108-11	NUT, PLAIN, SPLINE	A

LIST OF MATERIAL

THE TECHNICAL MATERIEL CORP.
MAMARONECK, NEW YORK

BRACKET, MOUNTING, PC BOARD

QTY / UNIT	MODEL USED ON	ASSY NO.
1	SMEA-1	
	SMEB-1	
APPLICATION		
S401-451	CODE	A

DECIMALS	FRACTIONS
.X ± .05	1/64
.XX ± .01	ANGLES
.XXX ± .005	0° - 30'
UNLESS OTHERWISE SPECIFIED DIMENSIONS ARE IN INCHES AND INCLUDE CHEMICALLY APPLIED OR PLATED FINISHES	
MATERIAL	
.081 THICK ALUM	
5052-H32	
FINISH	
S404	
YELLOW IRIDITE	

FINAL APPROVAL	DATE
Mech. DES.	DATE
ELECT. DES.	DATE
CHECKED	DATE
DRAWN	DATE
L. KOLIBABEK	5-29-67

SIZE	CODE IDENT. NO.	DWG NO.	ISSUE
B	82679	MS5120	Ø
SCALE	1:1	SHEET	OF

- UNLESS OTHERWISE SPECIFIED:
1. USE MATERIAL THICKNESS FOR MAXIMUM RADIUS ON ALL BENDS
 2. ALL ANGULAR BENDS 90 DEGREES
 3. REMOVE ALL BURRS AND SHARP EDGES
 4. MOUNT INSERTS AFTER FINISHING