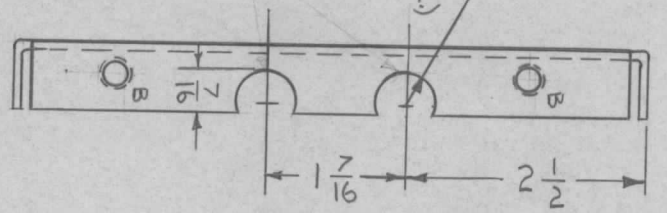
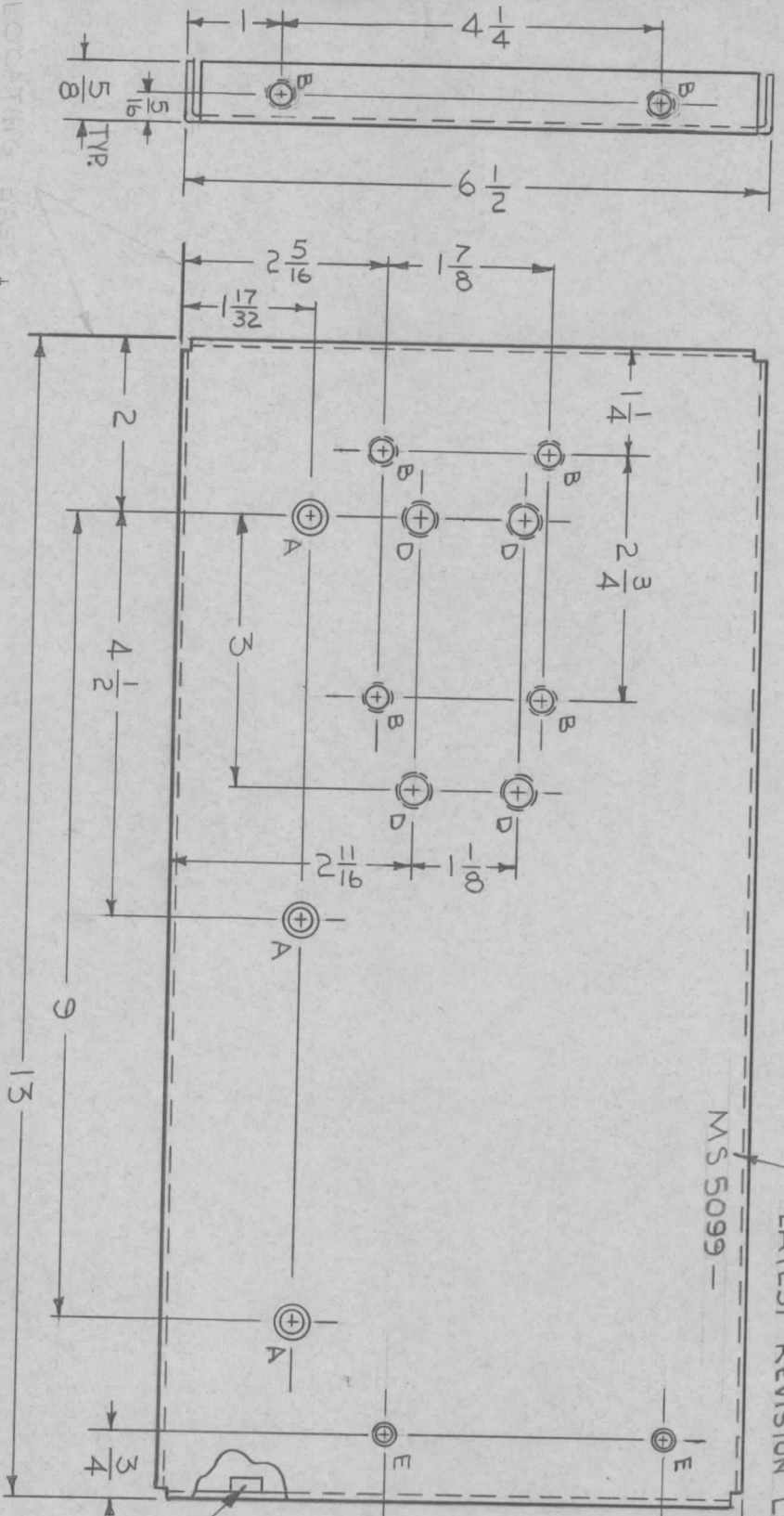


TMC PART NO.	DESCRIPTION
MS 5099 - 1	A5 SHOWN, RIGHT SIDE (W/ CUTOUTS & "E" HOLES)
MS 5099 - 2	OPPOSITE HAND, LEFT SIDE (W/OUT CUTOUTS & "E" HOLES)

REVISIONS		DATE	E.M.N. NO.	DRAFT	CHKD	APPD
X	EXPERIMENTAL RELEASE	9/22/66	X	RME		
Ø	ORIGINAL RELEASE FOR PRODUCTION	9/26/66	Ø			

MS 5099

METAL STAMP
TMC P/NO 1/8
HIGH GOTHIC WITH
LATEST REVISION LETTER

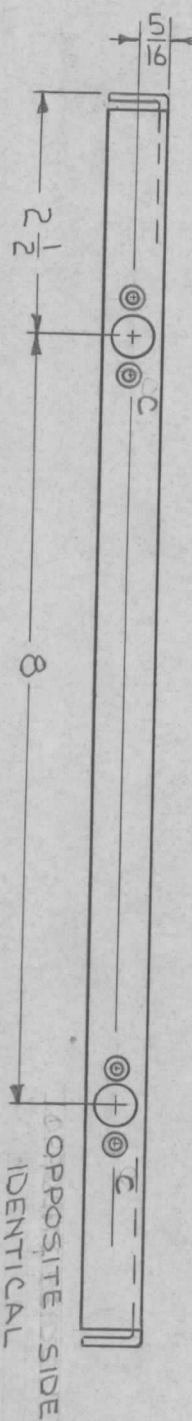


HOLE	DESCRIPTION	REQ
A	.169 DIA. & C'SINK 82° TO .337 DIA.	3
B	.221 - .224 DIA.	8
C	SEE DETAIL	4
D	.250 - .253 DIA.	4
E	.120 DIA. C'SINK 82° TO .230 DIA	2

NOTE:
CUTOUTS & "E" HOLES
ON RIGHT SIDE PLATE
ONLY.

SEE NOTE
SEE NOTE
SEE NOTE

1 MOUNT IN ALL "B" HOLES



REQ'D.	ITEM	PART NUMBER	DESCRIPTION	SYMBOL
4	2	NT 129-1032-4	NUT, ROUND, SWAGE TYPE	D
8	1	NT 129-832-4	NUT, ROUND, SWAGE TYPE	B

LIST OF MATERIAL
THE TECHNICAL MATERIEL CORP.
MAMARONECK, NEW YORK

DRAWN		RME	DATE	9/22/66	FINAL APPROVAL	DATE	9/26/66
CHECKED		HQ	DATE	9/26/66			
ELECT. DES.			DATE				
MECH. DES.			DATE				

QTY./UNIT	1	MODEL USED ON	SMEA-1	ASSY. NO.	
SCALE	1:2	CODE	A		

- UNLESS OTHERWISE SPECIFIED:
1. USE MATERIAL THICKNESS FOR MAXIMUM RADIUS ON ALL BENDS.
 2. ALL ANGULAR BENDS 90 DEGREES
 3. REMOVE ALL BURRS AND SHARP EDGES
 4. MOUNT INSERTS AFTER FINISHING

NOTES