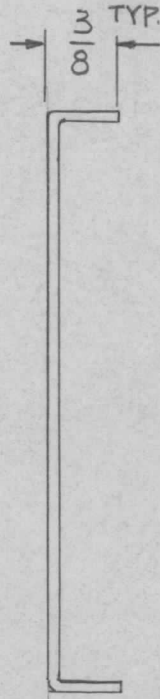
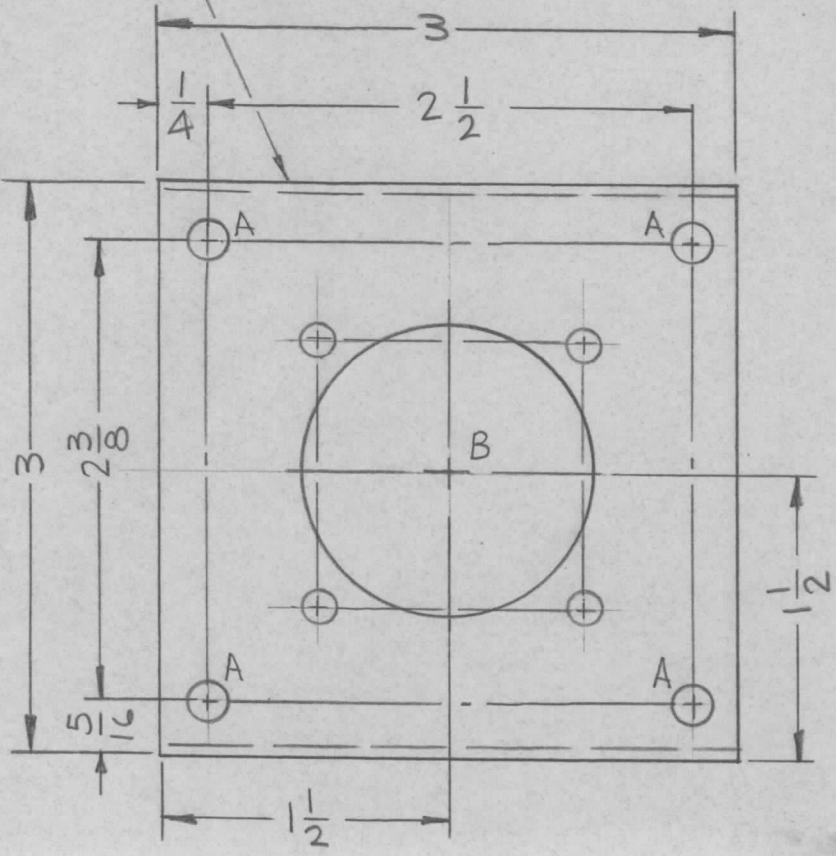
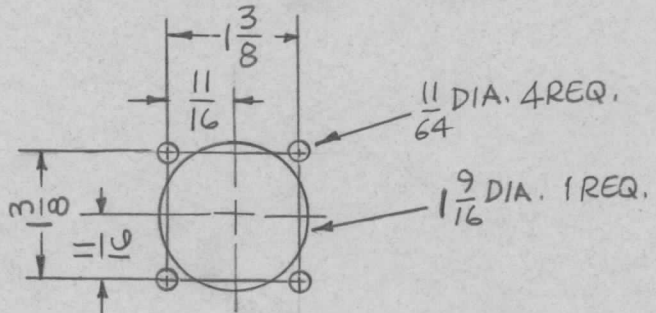


MARK TMC P/N (MS 5091)
 $\frac{1}{8}$ HIGH GOTHIC W/LATEST
 REV. LETTER.

| | | | | |
|---------------|---------|------------|---------|---|
| REQ. PER UNIT | USED ON | | MS5091 | Ø |
| | MODEL | ASS'Y. NO. | | |
| 1 | AX631 | | 9-15-66 | |



HOLES:
 A - 13/64 DIA. (4 REQ.)
 B - SEE DETAIL (1 REQ.)



DETAIL - B

- UNLESS OTHERWISE SPECIFIED:
1. USE MATERIAL THICKNESS FOR MAXIMUM RADIUS ON ALL BENDS
 2. ALL ANGULAR BENDS 90 DEGREES
 3. REMOVE ALL BURRS AND SHARP EDGES

REF. LD 2169 -

| | | | | | | | | | | | | | |
|---|---------------------------------|-------------|---------|-----------|---------|--------------------|----------|------------------------------|-------------|-----------------|--|----------------|--|
| | | | | | | REQ. ITEM | PART NO. | F. BUDETTI | DESCRIPTION | SYMBOL | | | |
| | | | | | | .064 THICK | | THE TECHNICAL MATERIEL CORP. | | | | | |
| | | | | | | STOCK SIZE | | MAMARONECK, NEW YORK | | | | | |
| Ø | ORIGINAL RELEASE FOR PRODUCTION | 1/11/67 | Ø | CV | | ALUMINUM | | BRACKET, MTG. CONNECTOR | | | | | |
| X | EXP. RELEASE | 9-15-66 | X | | | MATERIAL | | | | | | | |
| SYM | DESCRIPTION | DATE | CH. NO. | DRAFTS | CHECKER | ENG. APP. | | | | | | | |
| UNLESS OTHERWISE SPECIFIED DIMENSIONS ARE IN INCHES AND INCLUDE CHEMICALLY APPLIED OR PLATED FINISHES | | SCALE | | | | | | | | | | | |
| | | 1:1 | | | | 5052-H32 | | DRAWN | | CHECKED | | FINAL APPROVAL | |
| | | TOLERANCES | | FRACTIONS | | TYPE & TEMPER | | HEAT TREAT. SPEC. | | DRAWN | | CHECKED | |
| | | .X ± .05 | | ± 1/64 | | S404 YEL. IRIDITE | | | | DRAWN | | CHECKED | |
| | | .XX ± .01 | | ANGLES | | FINISH & SPEC. NO. | | ELEC. DES. APP. | | MECH. DES. APP. | | MS5091 | |
| | | .XXX ± .005 | | ± 0° 30' | | | | | | | | Ø | |