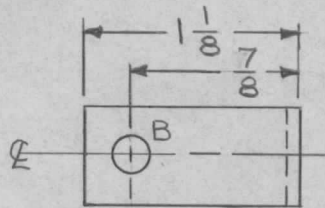
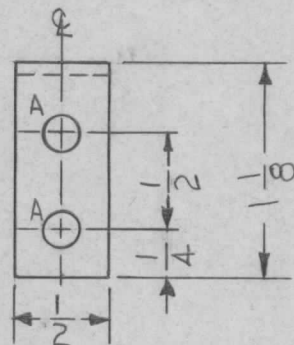
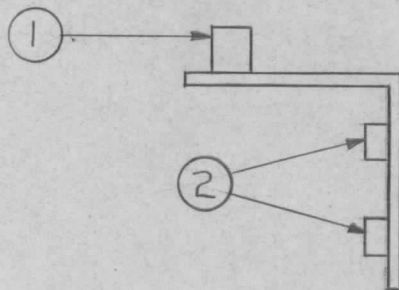


REQ. PER UNIT	USED ON			MS5068	Ø
	MODEL	ASS'Y. NO.	DATE		
2	RGCA		9.6.66		



HOLE	DESCRIPTION	REQ.
A	.191-.194 DIA.	2
B	.189 DIA.	1



UNLESS OTHERWISE SPECIFIED:

1. USE MATERIAL THICKNESS FOR MAXIMUM RADIUS ON ALL BENDS
2. ALL ANGULAR BENDS 90 DEGREES
3. REMOVE ALL BURRS AND SHARP EDGES
4. MOUNT INSERTS AFTER FINISHING

NOTE: MOUNT INSERTS AFTER FINISHING

2	2	NT129-632-4	NUT, PLAIN, SPLINE		
1	1	TE108-1	STAND OFF, RIVET TYPE		
REQ. ITEM	PART NO.		F. EATON	DESCRIPTION	SYMBOL
.062			THE TECHNICAL MATERIEL CORP.		
STOCK SIZE			MAMARONECK, NEW YORK		
ALUMINUM			BRACKET, PC SUPPORT		
MATERIAL					
UNLESS OTHERWISE SPECIFIED DIMENSIONS ARE IN INCHES AND INCLUDE CHEMICALLY APPLIED OR PLATED FINISHES		SCALE			
		1:1			
DECIMALS	TOLERANCES		FRACTIONS	CODE	
.X ± .05			± 1/64		
.XX ± .01			ANGLES		
.XXX ± .005			± 0° 30'		
5052-H32		HEAT TREAT. SPEC.	RME	DRAWN	CHECKED
S404 IRIDITE			FINAL APPROVAL		
FINISH & SPEC. NO.		ELEC. DES. APP.	MECH. DES. APP.	MS5068 Ø	