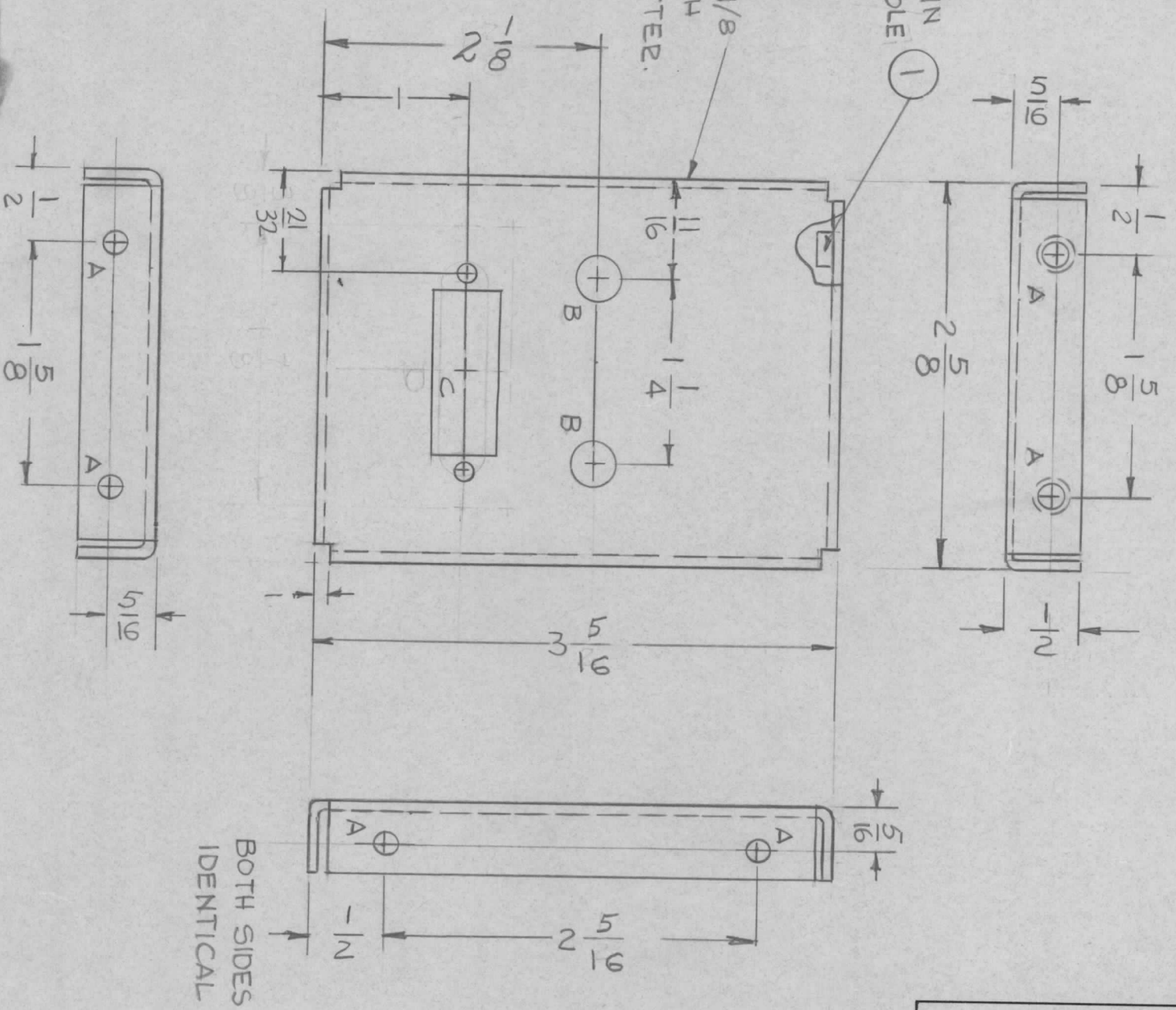


- UNLESS OTHERWISE SPECIFIED:
1. USE MATERIAL THICKNESS FOR MAXIMUM RADIUS ON ALL BENDS
 2. ALL ANGULAR BENDS 90 DEGREES
 3. REMOVE ALL BURRS AND SHARP EDGES
 4. MOUNT INSERTS AFTER FINISHING

NOTES

MARK TMC P/No 1/8
HIGH GOTHIC WITH
LATEST REV. LETTER.

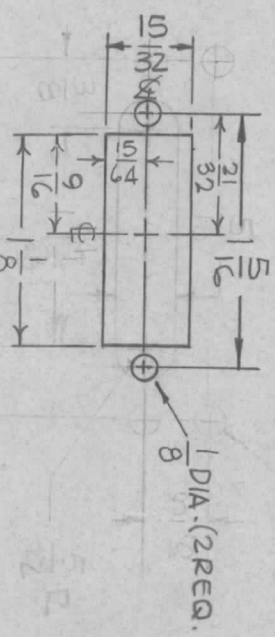
MOUNT IN
ALL "A" HOLE



MS 5044

SYMBOL		DESCRIPTION		DATE	E.M.N. NO.	DRAFT	CHKD	APPD
X		EXPERIMENTAL RELEASE		8/19/66	X	GDL	ADL	
X1		COMPLETELY REVISED		8-22-66	X1	JBC		
X2		2 1/8 DIM WAS 1 7/8		8/23/66	X2			
X3		C DETAIL WAS FOR A TERMINAL STRIP		8-24-66	X3			
Ø		ORIGINAL RELEASE FOR PRODUCTION		11-22-66	Ø	RME		

HOLE	DESCRIPTION	REQ.
A	.191-.194 DIA.	8
B	.312 DIA.	2
C	SEE DETAIL	1
D	SEE DETAIL	1



DETAIL "C"
(1 REQ.)

REF.	LD2150	NT 129-632-4	NUT PLAIN, SPLINE	DESCRIPTION	SYMBOL
8	1				C

MATERIAL	FINISH	TITLE
.064 THK. ALUMINUM 5052-H32	S404 YEL. IBIDITE	PLATE, REAR

QTY./UNIT	SCALE	MODEL USED ON	CODE	ASSY. NO.
1	1:1	SWCA-3K	A	BMA149

UNLESS OTHERWISE SPECIFIED DIMENSIONS ARE IN INCHES AND INCLUDE CHEMICALLY APPLIED OR PLATED FINISHES

DECIMALS: .X ± .05, .XX ± .01, .XXX ± .005

FRACTIONS: ± 1/64 ANGLES, ± 0° 30'

THE CONTENTS OF THIS DRAWING ARE THE EXCLUSIVE PROPERTY OF THE TECHNICAL MATERIEL CORP. ITS UNAUTHORIZED USE OR REPRODUCTION IN WHOLE OR IN PART IS STRICTLY FORBIDDEN.

LIST OF MATERIAL	THE TECHNICAL MATERIEL CORP.	MAMARONECK, NEW YORK
DRAWN: GDL	CHECKED: GDS	DATE: 8-19-66
ELECT. DES.:	MECH. DES.:	DATE: 11-19-66
DATE: 11-24-66	DATE: 11-24-66	DATE: 11-24-66
FINAL APPROVAL: [Signature]	DATE: 11-24-66	DATE: 11-24-66
SHEET: MS5044	REV. LTR.:	