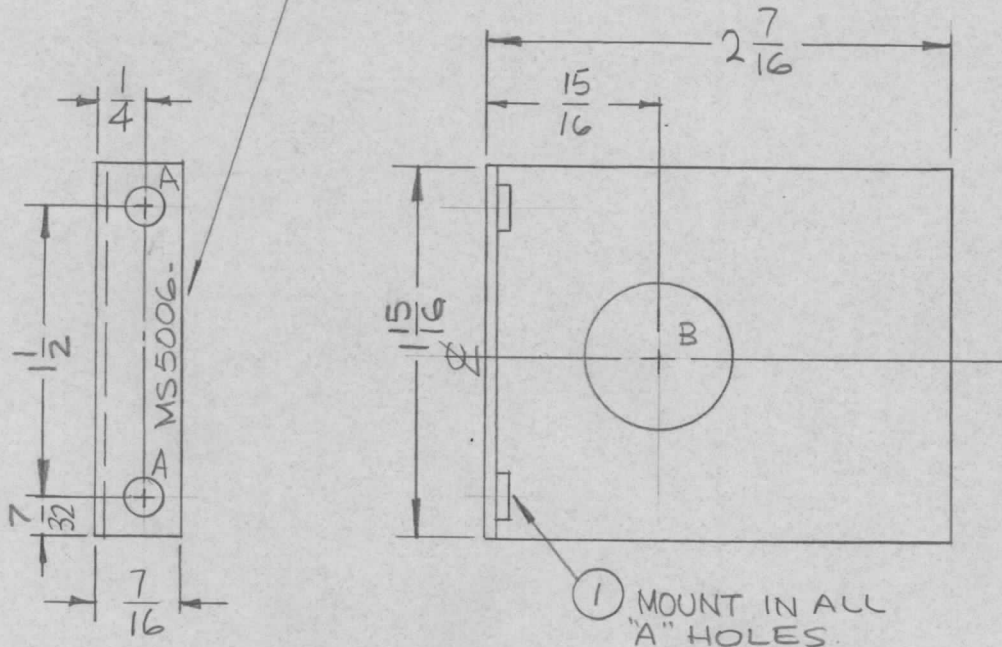


REQ. PER UNIT	USED ON			MS5006	Ø
	MODEL	ASS'Y. NO.	DATE		
3	LPFA-1K		7-13-66		

MARK TMC P/N  
 $\frac{1}{8}$ " HIGH GOTHIC  
 W/LATEST REV.  
 LETTER.

HOLES:

- A - .191-.194 DIA. (2REQ.)
- B - 3/4 DIA. (1REQ.)



UNLESS OTHERWISE SPECIFIED:

1. USE MATERIAL THICKNESS FOR MAXIMUM RADIUS ON ALL BENDS
2. ALL ANGULAR BENDS 90 DEGREES
3. REMOVE ALL BURRS AND SHARP EDGES
4. MOUNT INSERTS AFTER FINISHING

		2 1		NT129-632-3		NUT, PLAIN, SPLINE		A	
		REQ.	ITEM	PART NO.		F. BUDETTI DESCRIPTION		SYMBOL	
				.051 THICK		THE TECHNICAL MATERIEL CORP.			
				STOCK SIZE		MAMARONECK, NEW YORK			
				ALUMINUM		SHIELD, 1K FILTER			
				MATERIAL					
				5052-H32		DRAWN		CHECKED	
				TYPE & TEMPER		HEAT TREAT. SPEC.		FINAL APPROVAL	
				S404YEL. IRIDITE				MS5006 Ø	
				FINISH & SPEC. NO.		ELEC. DES. APP.		MECH. DES. APP.	

UNLESS OTHERWISE SPECIFIED DIMENSIONS ARE IN INCHES AND INCLUDE CHEMICALLY APPLIED OR PLATED FINISHES		SCALE		1:1	
DECIMALS .X ± .05 .XX ± .01 .XXX ± .005		FRACTIONS ± 1/64 ANGLES ± 0° 30'		CODE A	
TOLERANCES		S401-451			

Ø	ORIG RELEASE FOR PROD	5-25-67	Ø	RG	file
X	EXP. RELEASE	7-13-66	X		