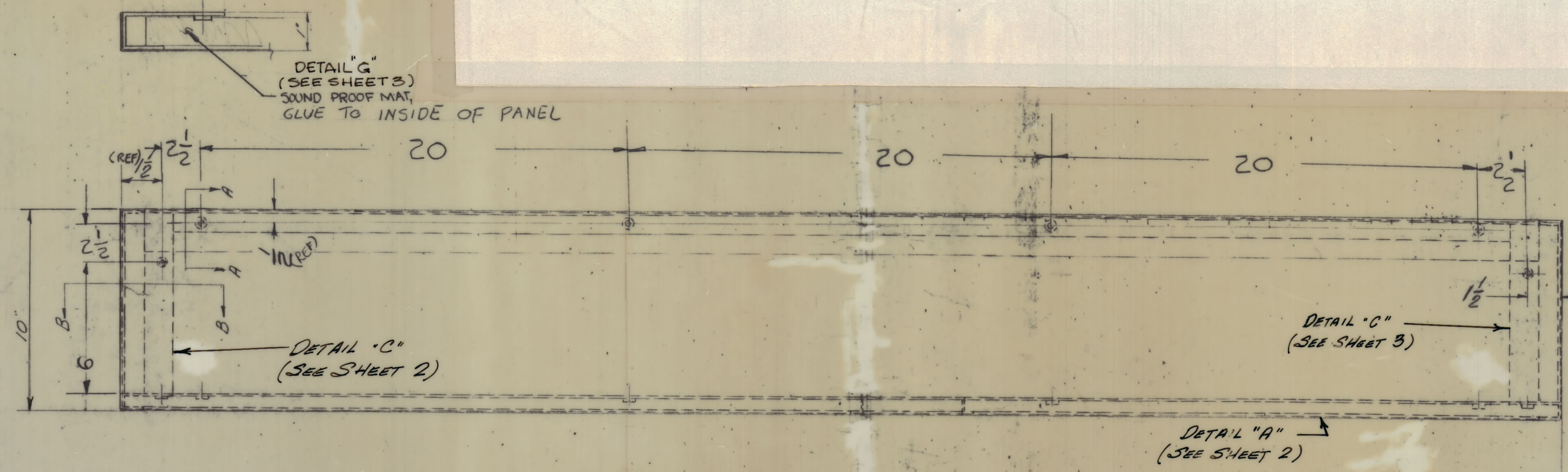
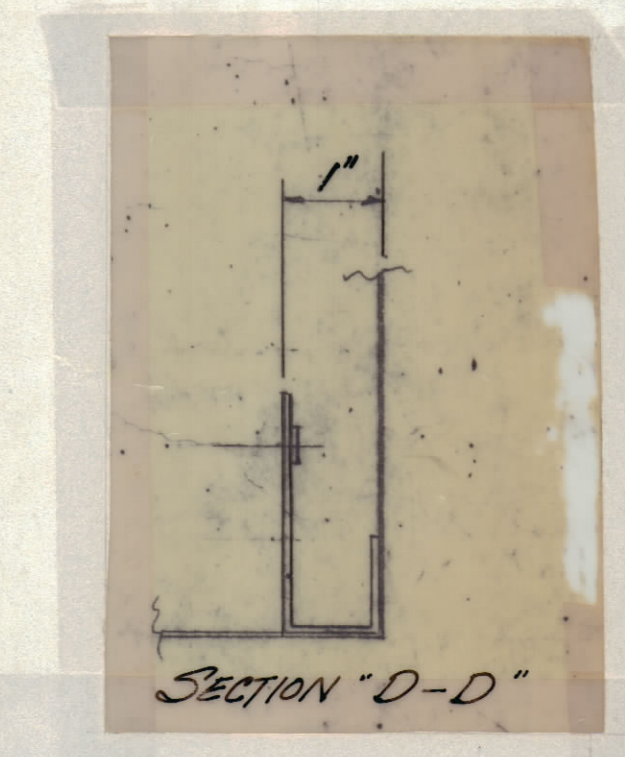
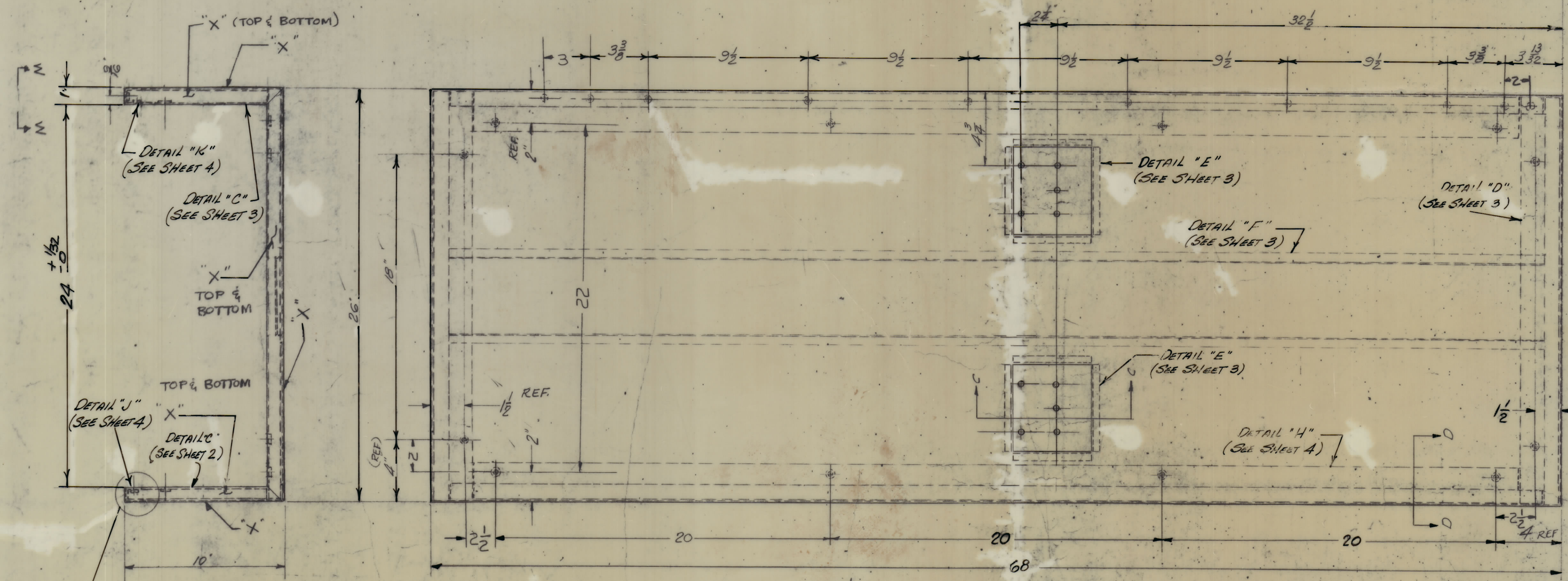
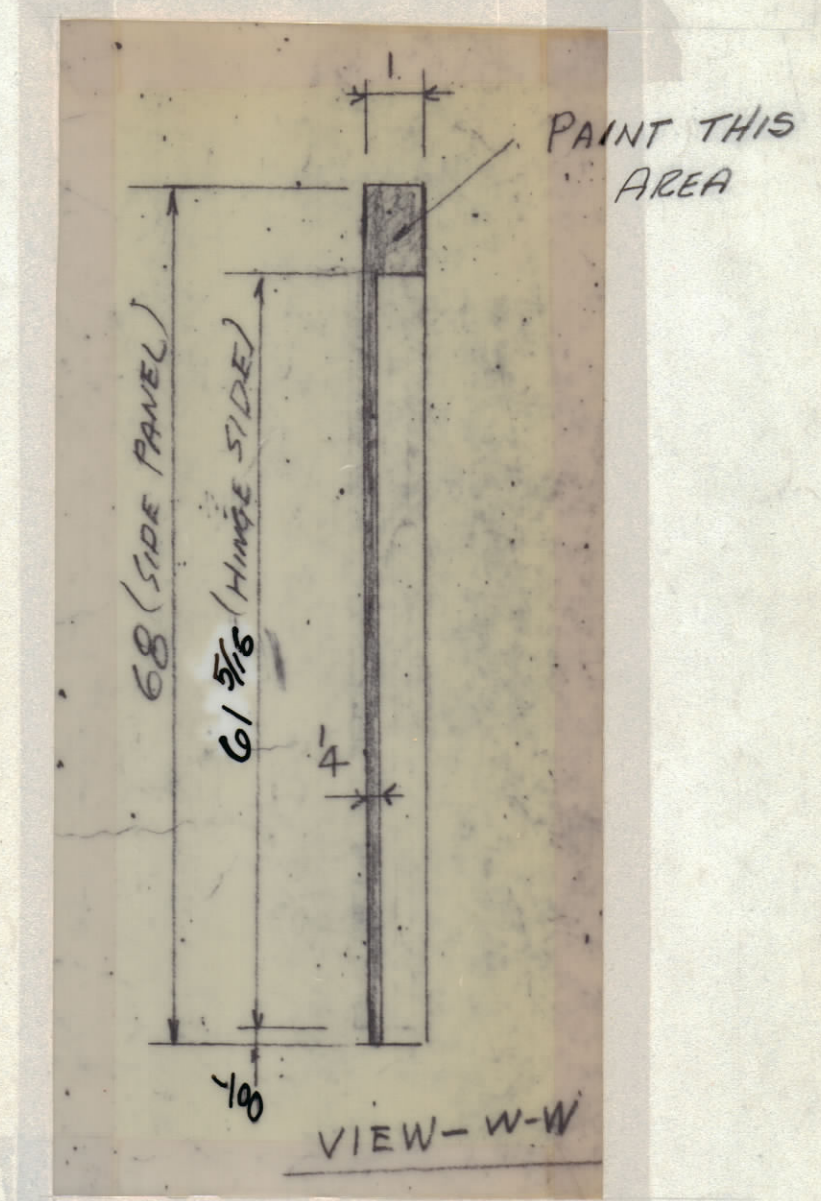
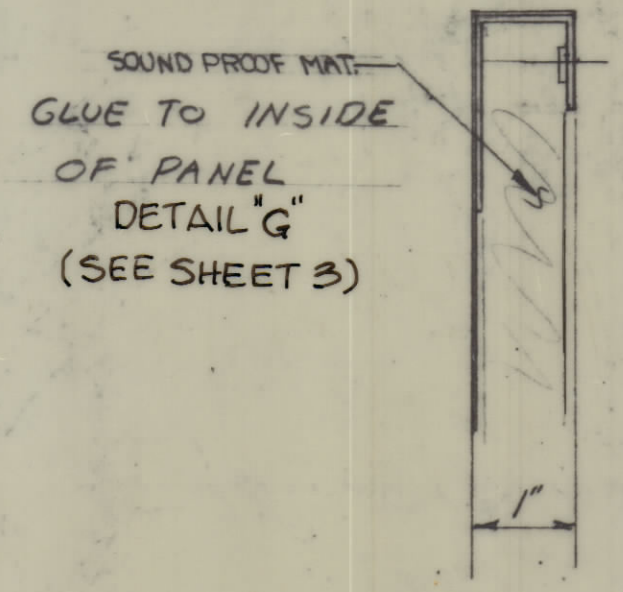


| REVISIONS | | | | | | |
|-----------|-----|---------------------------------|----------|------------|-------|------|
| ZONE | SYM | DESCRIPTION | DATE | E.M.N. NO. | DRAFT | CHKD |
| | | ORIGINAL RELEASE FOR PRODUCTION | 12/16/65 | | | |

SECTION "B-B"



SECTION "A-A"



NOTE: MS3142-1 (AS SHOWN)
MS3142-2 (OPP. HAND)

FINISH NOTE
1- COPPER FLASH PER 3898 OR EQUIVALENT & CLEAR IRIDITE PER 3425 ALL OVER.
2- S114 & BLUE TEXTURED SURFACES, S52D INDICATED BY (X).

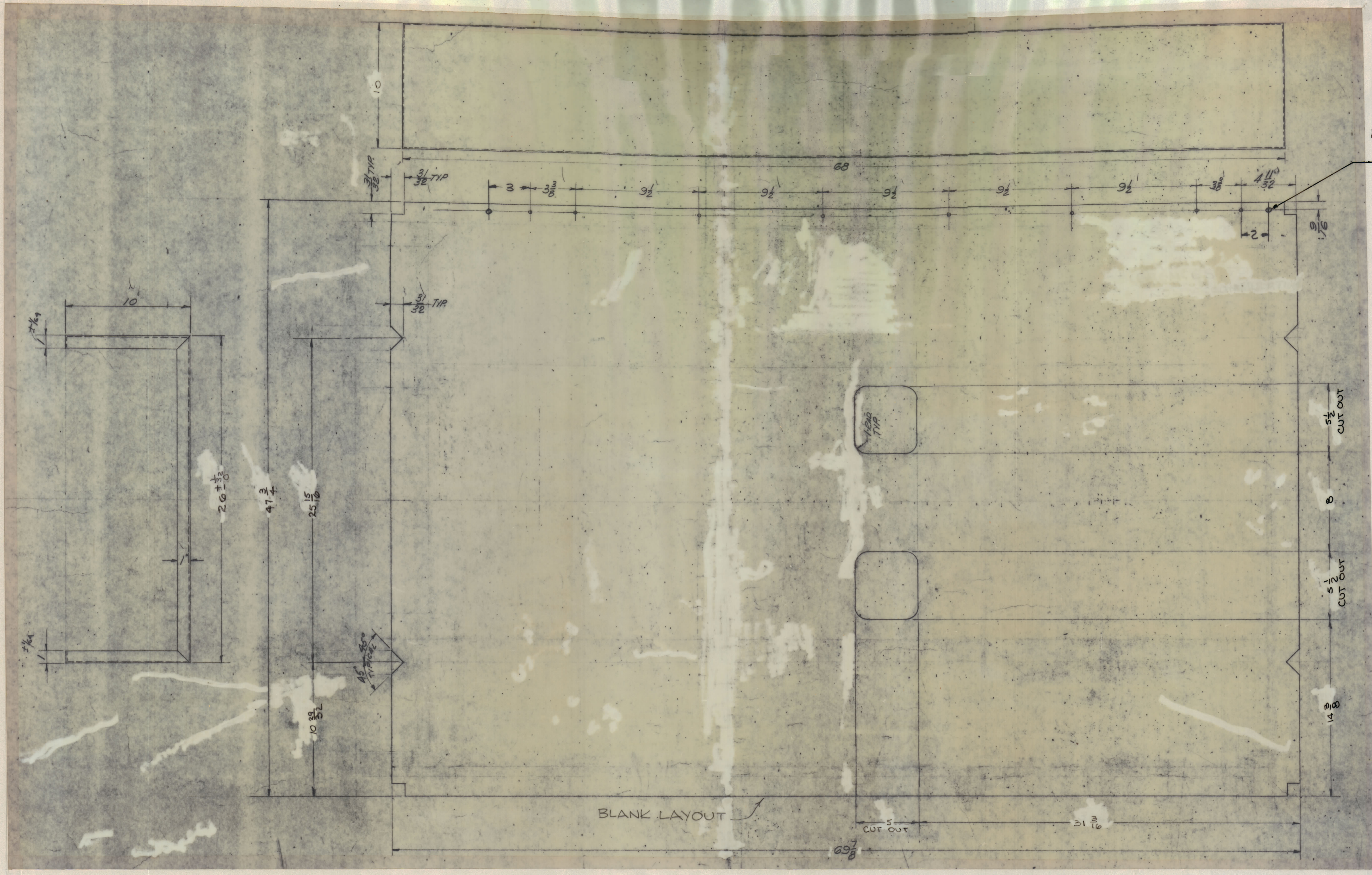
- UNLESS OTHERWISE SPECIFIED
- CONSTRUCTION 16 GA. STEEL
 - MOUNT ALL INSERTS AFTER FINISHING.
 - ALL WELD JOINTS TO BE VEE'D OUT PRIOR TO WELDING.
 - WELDING TO BE PER MIL-T-5021C, TUNGSTEN INERT GAS PROCESS.
 - ALL JOINTS SHOULD BE WELDED INSIDE AND OUTSIDE.
 - ALL OUTSIDE WELDS TO BE GROUND FLUSH.
 - OUTSIDE SURFACES TO BE REASONABLY FREE OF SCRATCHES AND TOOL MARKS AND HAVE A SURFACE ROUGHNESS NOT TO EXCEED 132

NOTES

| QTY/UNIT | MODEL USED ON | ASBY. NO. |
|----------|---------------|-----------|
| AS NOTED | TER-100K | |
| SCALE | CODE | SA01-189 |

| REQ'D. | ITEM | PART NUMBER | DESCRIPTION | SYMBOL |
|---|------|---|-------------|----------------|
| BUDETTI LIST OF MATERIAL | | | | |
| MATERIAL | | THE TECHNICAL MATERIEL CORP. MAMARONECK, NEW YORK | | |
| FINISH | | TITLE SKIN, SIDE PANEL | | |
| UNLESS OTHERWISE SPECIFIED DIMENSIONS ARE IN INCHES AND INCLUDE CHEMICALLY APPLIED OR PLATED FINISHES | | DRAWN | DATE | FINAL APPROVAL |
| | | AL. HUSTIN | 11-65 | |
| | | CHEKED | DATE | |
| | | | 12/16/65 | |
| | | ELECT. DES. | DATE | |
| | | | | |
| | | MECH. DES. | DATE | |
| | | | | |
| | | MS3142 | | |
| | | SHEET 1 OF 2 | | |

MS3142



.250 DIA. HOLES
(10 REQ)

DETAIL "A"
FINISH UPON
ASSEMBLY

BLANK LAYOUT

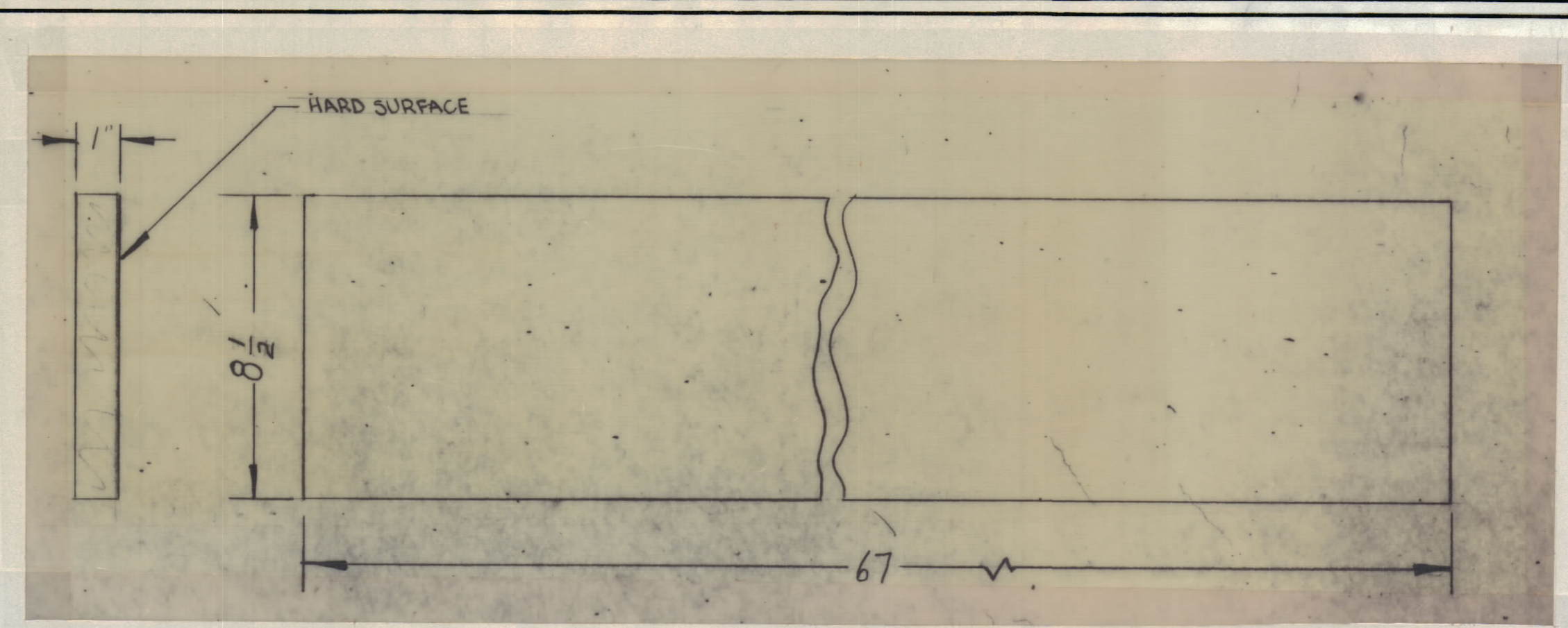
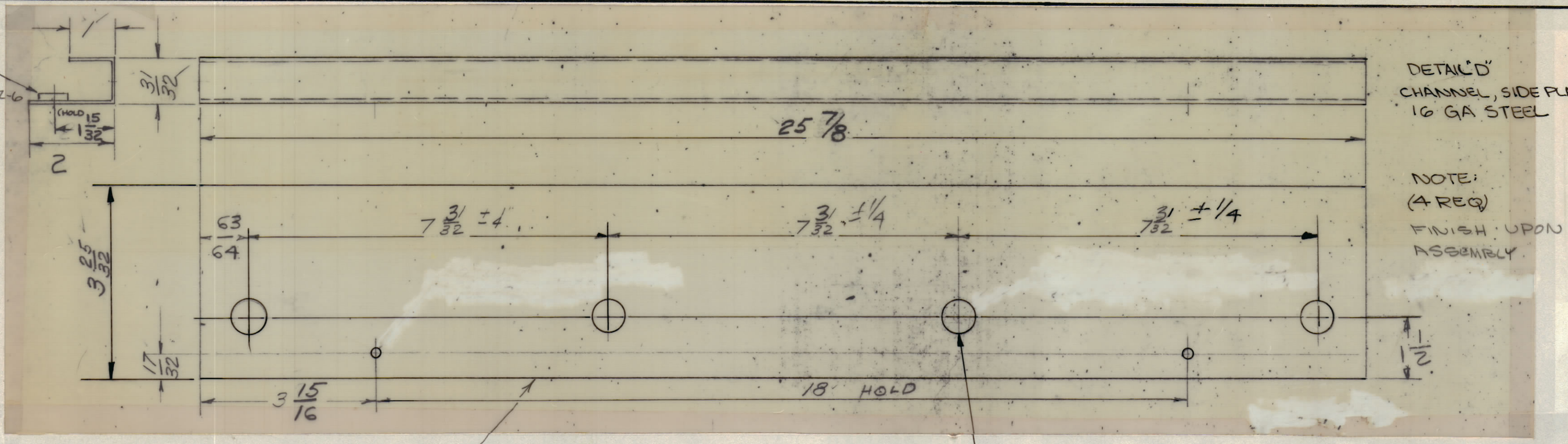
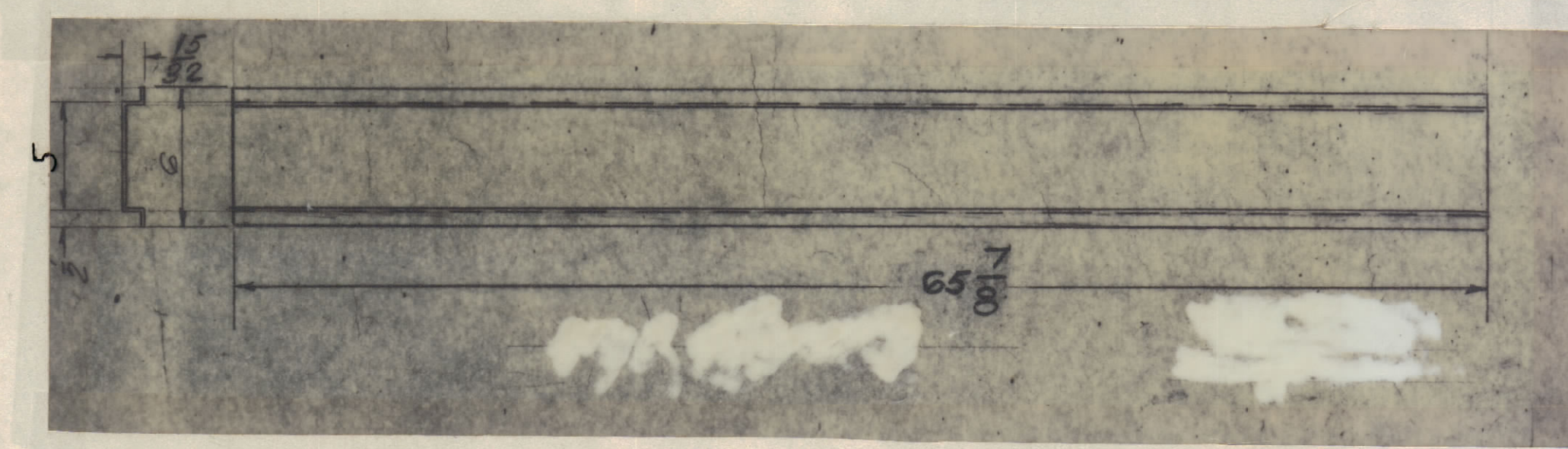
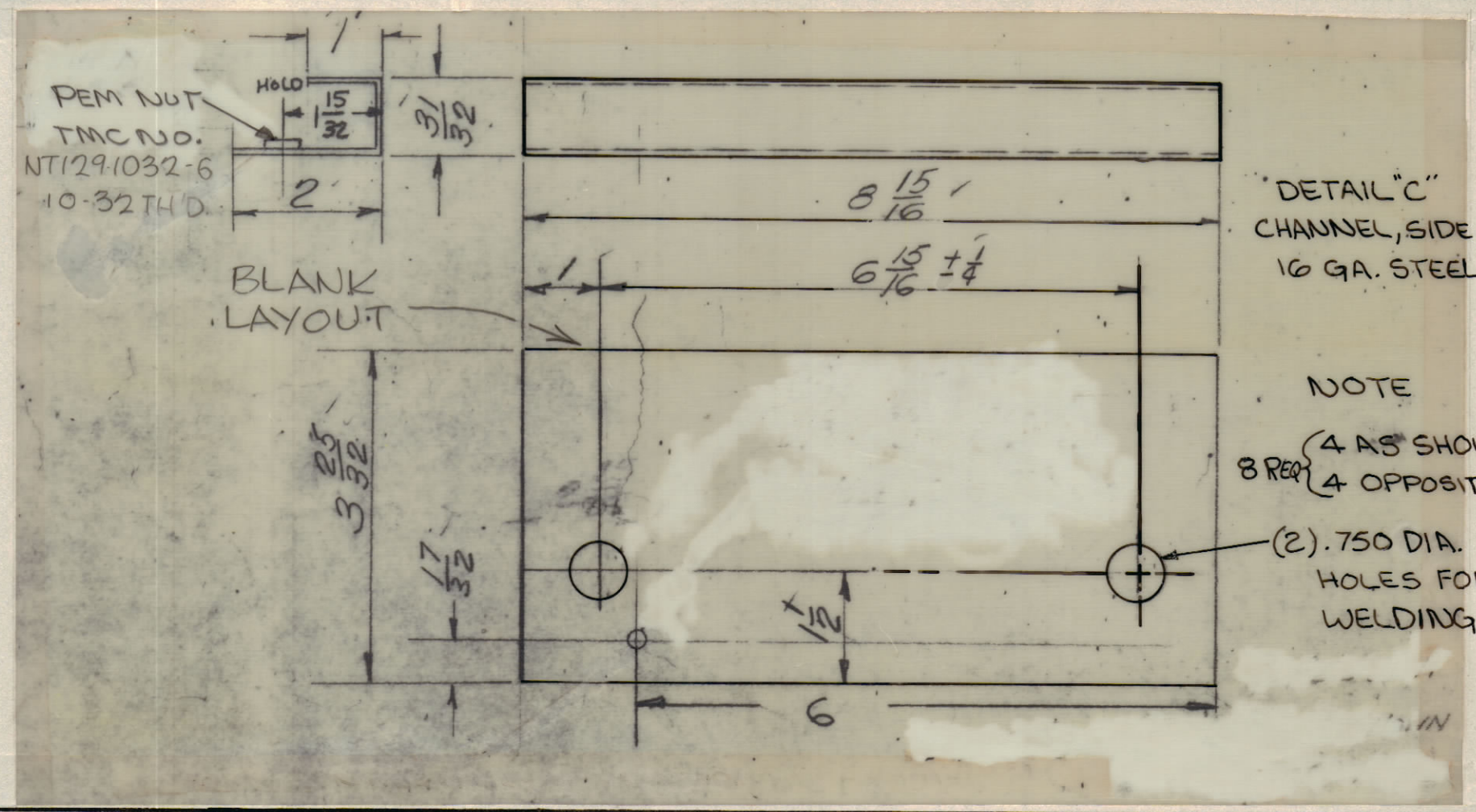
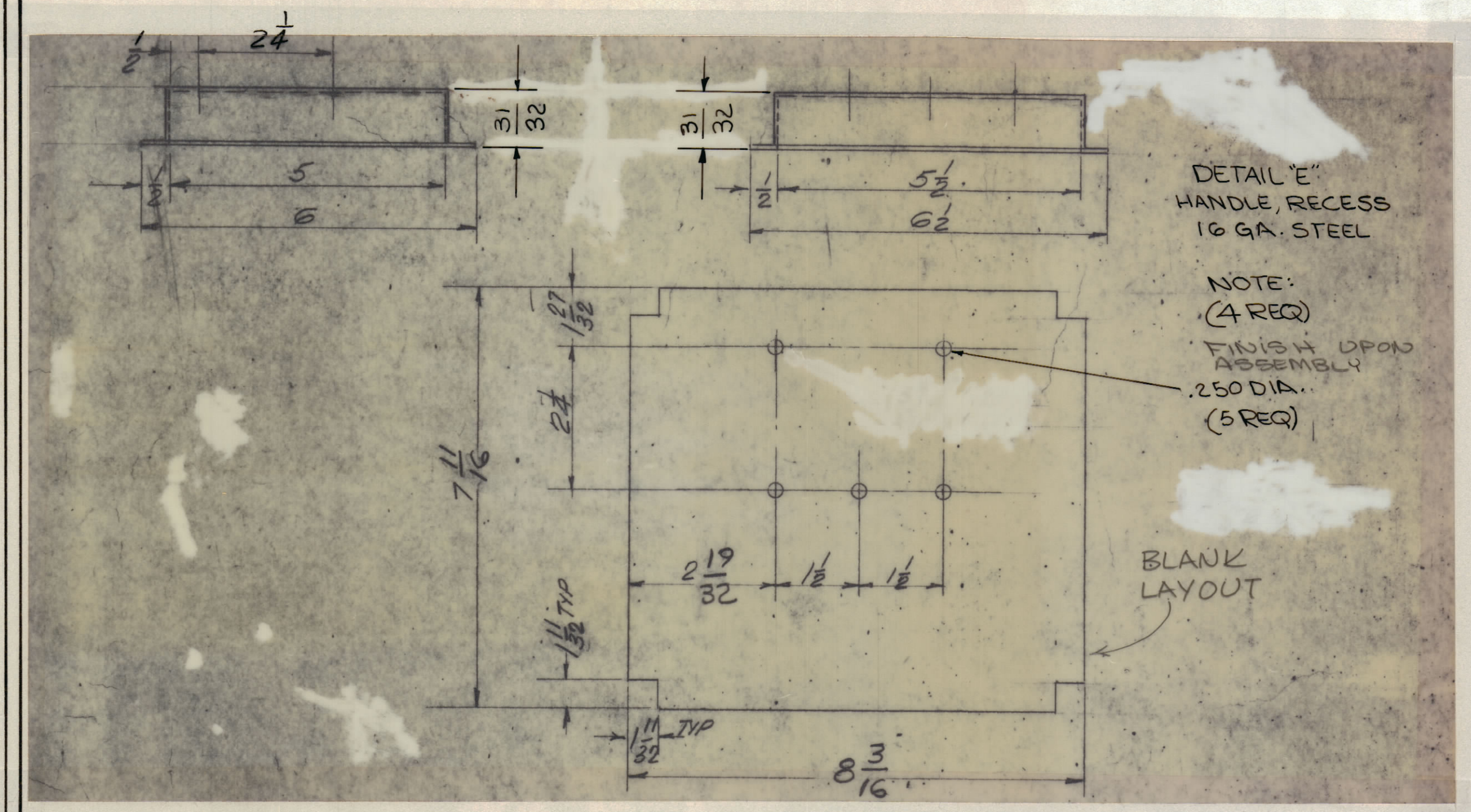
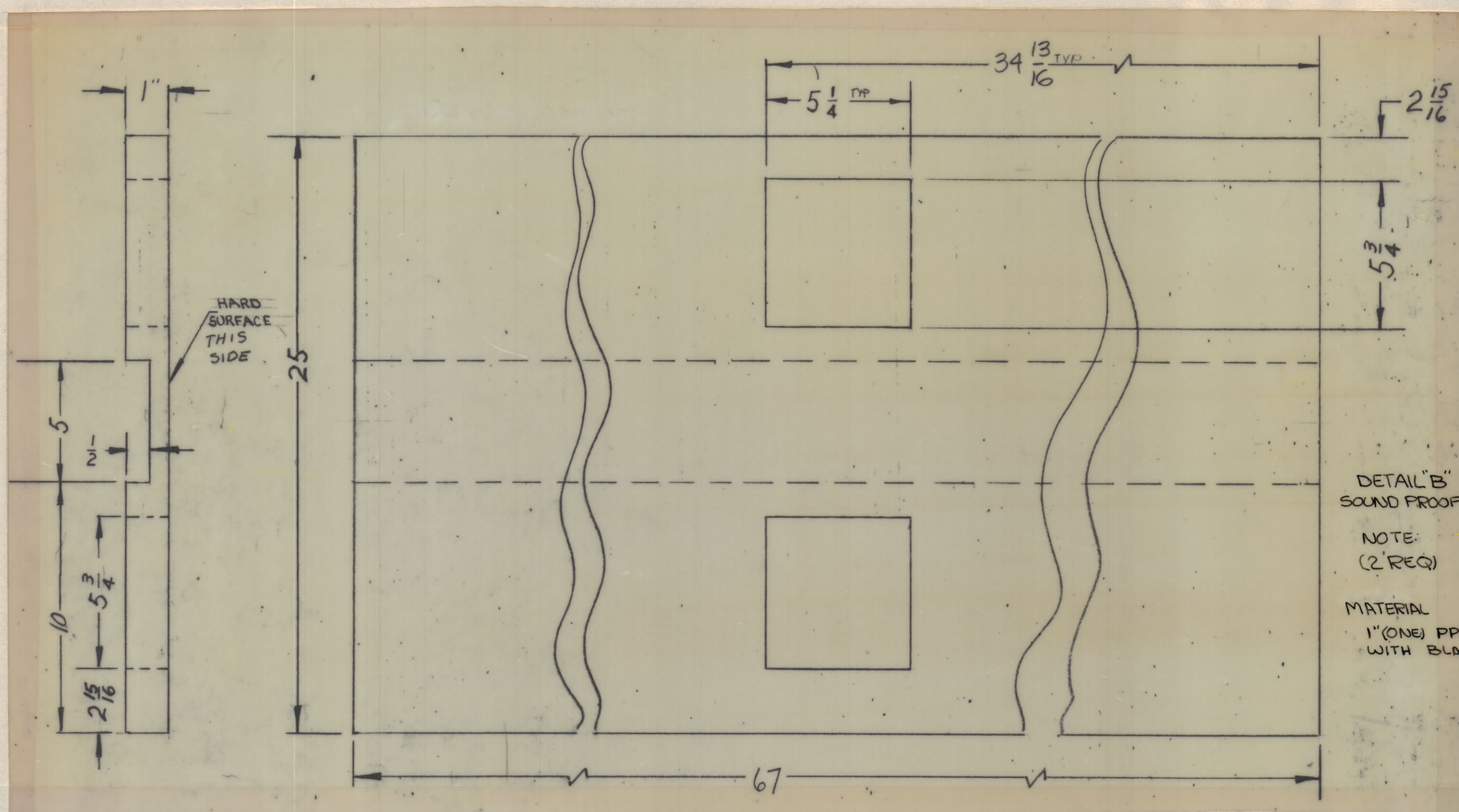
NOTE:
2 REQ. (AS SHOWN)
OPPOSITE

TOLERANCES TO BE NON ACCUMULATIVE

| REQ'D. | ITEM | PART NUMBER | DESCRIPTION | SYMBOL |
|---|------|--------------------------------|-------------|----------------|
| BUDETTI LIST OF MATERIAL | | | | |
| MATERIAL | | THE TECHNICAL MATERIEL CORP. | | |
| 20 GA. STEEL | | MAMARONECK, NEW YORK | | |
| FINISH | | TITLE | | |
| SEE SHEET Ø | | SKIN, SIDE PANEL DETAIL "A" | | |
| UNLESS OTHERWISE SPECIFIED DIMENSIONS ARE IN INCHES AND INCLUDE CHEMICALLY APPLIED OR PLATED FINISHES | | DRAWN | DATE | FINAL APPROVAL |
| DECIMALS XX ± .05 XXX ± .005 | | 10/5/60 | 7-1-60 | |
| FRACTIONS ± 1/64 ANGLES ± 0° 30' | | ELECT. DES. | DATE | |
| TOLERANCES | | MECH. DES. | DATE | |
| THE CONTENTS OF THIS DRAWING ARE THE EXCLUSIVE PROPERTY OF THE TECHNICAL MATERIEL CORP. ITS UNAUTHORIZED USE OR REPRODUCTION IN WHOLE OR IN PART IS STRICTLY FORBIDDEN. | | | | REV. LTR. |
| | | | | MS3142 |
| | | | | SHEET 2 OF 4 |

NOTES

| REVISIONS | | | | | | |
|-----------|-----|---------------------------------|-------|------------|-------|------|
| ZONE | SYM | DESCRIPTION | DATE | E.M.N. NO. | DRAFT | CHKD |
| Ø | | ORIGINAL RELEASE FOR PRODUCTION | 10/65 | Ø | | JD |

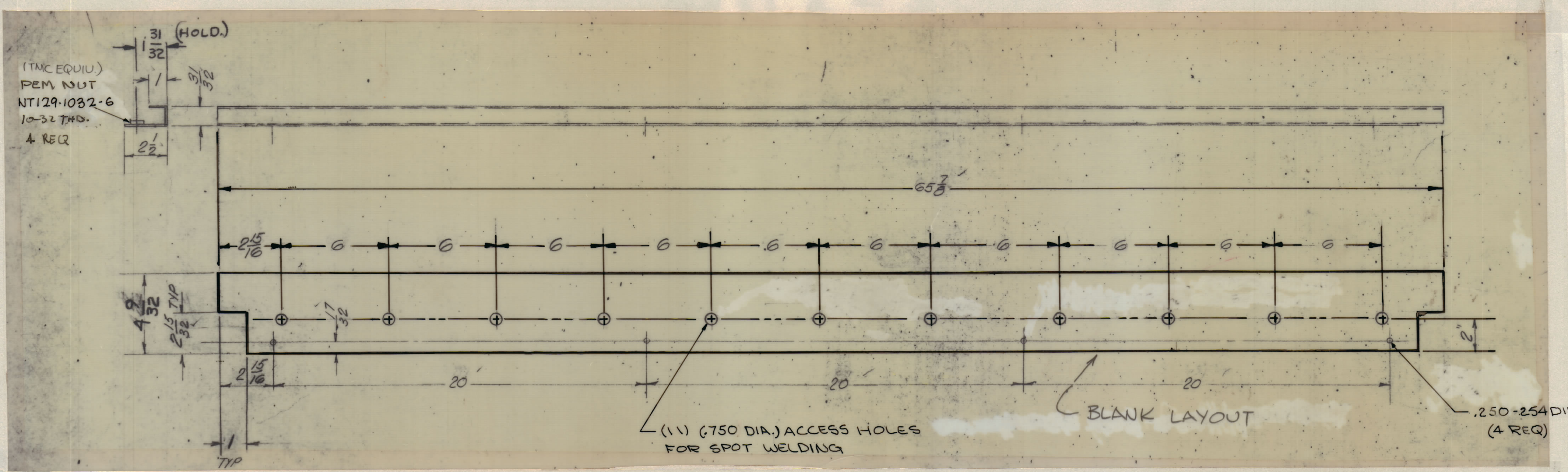


| REQ'D. | ITEM | PART NUMBER | DESCRIPTION | SYMBOL |
|---|------|-------------------------|--|----------------------------|
| BUDETTI LIST OF MATERIAL | | | | |
| MATERIAL | | AS NOTED | THE TECHNICAL MATERIEL CORP. MAMARONECK, NEW YORK | |
| FINISH | | SEE SHEET Ø | TITLE SKIN, SIDE PANEL DETAILS B-C-D-E-F-G | |
| UNLESS OTHERWISE SPECIFIED DIMENSIONS ARE IN INCHES AND INCLUDE CHEMICALLY APPLIED OR PLATED FINISHES | | DRAWN CANZA | DATE 7-1-65 | FINAL APPROVAL [Signature] |
| DECIMALS XX ± .05 .XXX ± .005 | | CHECKED [Signature] | DATE 10/65 | DATE |
| FRACTIONS ± 1/64 ANGLES ± 0° 30' | | ELECT. DES. [Signature] | | DATE |
| TOLERANCES | | MECH. DES. [Signature] | | DATE |
| SCALE DOWNSIDE SCALE | | CODE S401-189 | | ASSY. NO. |
| THE CONTENTS OF THIS DRAWING ARE THE EXCLUSIVE PROPERTY OF THE TECHNICAL MATERIEL CORP. ITS UNAUTHORIZED USE OR REPRODUCTION IN WHOLE OR IN PART IS STRICTLY FORBIDDEN. | | | | |
| REV. LTR. | | | MS3142 | |
| SHEET 3 OF 4 | | | REV. LTR. | |

NOTES

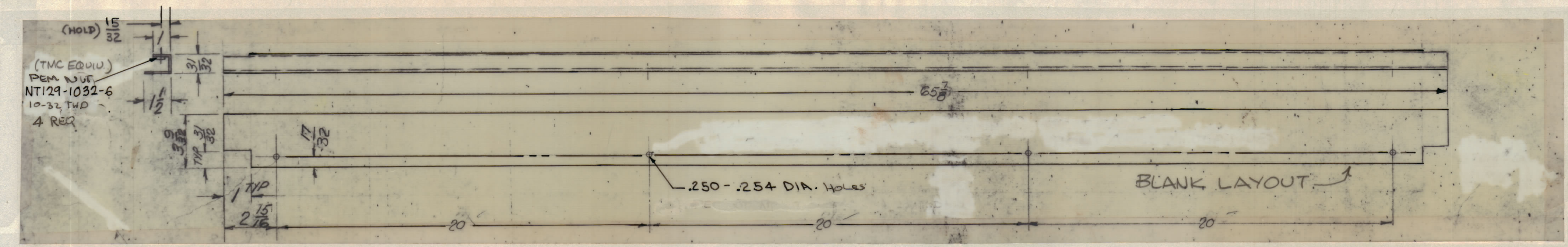
MS3142

| REVISIONS | | | | | | |
|-----------|-----|---------------------------------|-------|-----------|-------|------|
| ZONE | SYM | DESCRIPTION | DATE | EM.N. NO. | DRAFT | CHKD |
| | Ø | ORIGINAL RELEASE FOR PRODUCTION | 12/16 | Ø | | JQ |



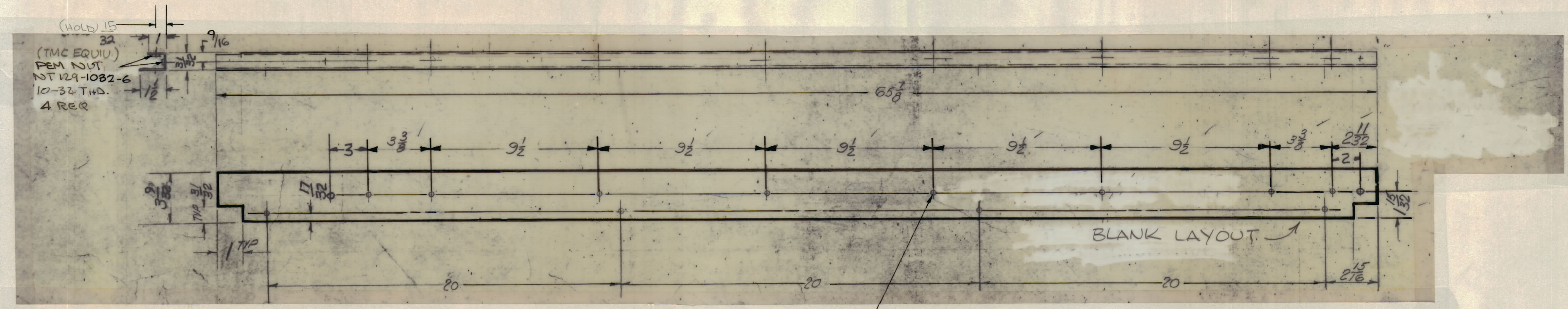
DETAIL H
CHANNEL, SIDE PANEL
16 GA. STEEL

NOTE:
4 REQ.
FINISH UPON ASSEMBLY



DETAIL J
CHANNEL, SIDE PANEL
16 GA. STEEL

NOTE:
2 REQ.
FINISH UPON ASSEMBLY



DETAIL K
CHANNEL, SIDE PANEL
16 GA. STEEL

NOTE:
2 REQ. (1 AS SHOWN
OPPOSITE HAND)
FINISH UPON ASSEMBLY

MS3142

| | | |
|--------------|---------------|-----------|
| AS NOTED | TER-100K | ASSY. NO. |
| QTY./UNIT | MODEL USED ON | |
| SCALE | CODE | S401-139 |
| DO NOT SCALE | | |

| 22 | NT129-1032-4 | NUT ROUND SWAGE TYPE | | |
|---|--------------|--|---------------------|-----------------------------------|
| REQ'D. | ITEM | PART NUMBER | DESCRIPTION | SYMBOL |
| BUDETTI LIST OF MATERIAL | | | | |
| MATERIAL | | THE TECHNICAL MATERIEL CORP. MAMARONECK, NEW YORK | | |
| AS NOTED | | TITLE SKIN, SIDE PANEL DETAILS H-J-K | | |
| FINISH (SEE SHEET Ø) | | DRAWN EANZA | DATE 10/5/65 | FINAL APPROVAL [Signature] |
| UNLESS OTHERWISE SPECIFIED DIMENSIONS ARE IN INCHES AND INCLUDE CHEMICALLY APPLIED OR PLATED FINISHES | | CHECKED [Signature] | DATE 10/5/65 | DATE 12/16/65 |
| DECIMALS X ± .05 XX ± .01 XXX ± .005 | TOLERANCES | FRACTIONS ± 1/64 ANGLES ± 0° 30' | ELECT. DES. DATE | MECH. DES. DATE |
| THE CONTENTS OF THIS DRAWING ARE THE EXCLUSIVE PROPERTY OF THE TECHNICAL MATERIEL CORP. ITS UNAUTHORIZED USE OR REPRODUCTION IN WHOLE OR IN PART IS STRICTLY FORBIDDEN. | | | | <p>MS3142</p> <p>SHEET 4 OF 4</p> |

NOTES