

THE CONTENTS OF THIS DRAWING ARE THE EXCLUSIVE PROPERTY OF THE TECHNICAL MATERIEL CORP. ITS UNAUTHORIZED USE FOR REPRODUCTION IN WHOLE OR IN PART IS STRICTLY FORBIDDEN.

REQ. PER UNIT

USED ON

MODEL

ASS'Y. NO.

DATE

1

HFS-1

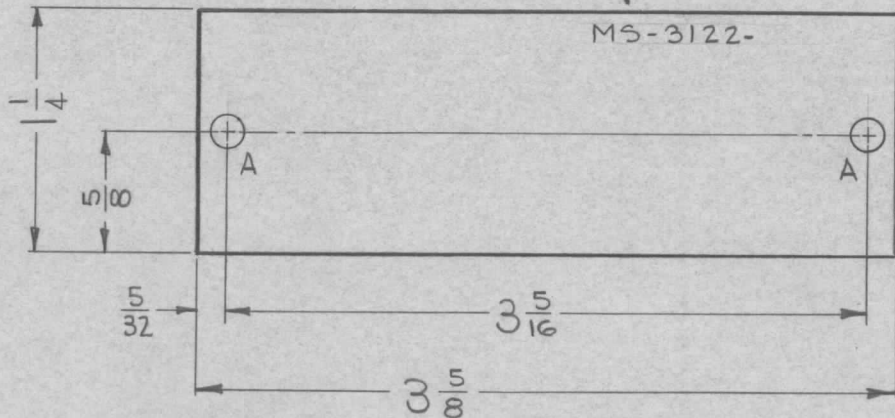
AX-384

3-15-63

MS-3122

METAL STAMP TMC  
PART NO. 1/8 HIGH,  
GOTHIC.

LEGEND		
HOLE	DESCRIPTION	REQ
A	5/32 DIA.	2



SYM	DESCRIPTION	DATE	CH. NO.	DRAFTS	CHECKER	ENG. APP.	REQ. ITEM	PART NO.	DESCRIPTION	SYMBOL	
									J. STRUMER		
							.005 THK		THE TECHNICAL MATERIEL CORP.		
							STOCK SIZE		MAMARONECK, NEW YORK		
							SHIM BRASS		PLATE, CRYSTAL GROUNDING		
							MATERIAL				
UNLESS OTHERWISE SPECIFIED DIMENSIONS ARE IN INCHES AND INCLUDE CHEMICALLY APPLIED OR PLATED FINISHES		SCALE		FULL							
DECIMALS .X ± .05 .XX ± .01 .XXX ± .005	TOLERANCES	FRACTIONS ± 1/64 ANGLES ± 0° 30'	CODE				TYPE & TEMPER	HEAT TREAT. SPEC.	DRAWN <i>[Signature]</i>	CHECKED <i>[Signature]</i>	FINAL APPROVAL <i>[Signature]</i>
							FINISH & SPEC. NO.		ELEC. DES. APP. <i>[Signature]</i>	MECH. DES. APP. <i>[Signature]</i>	MS-3122