

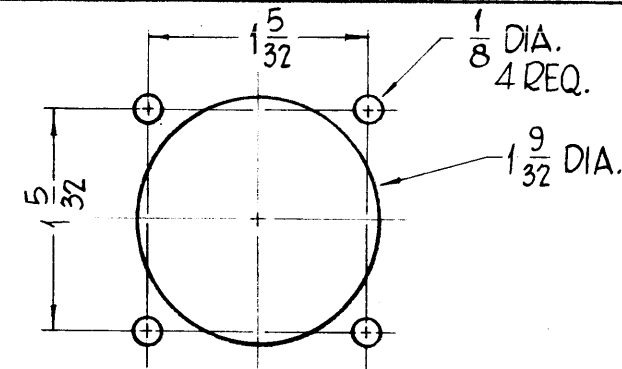
METAL STAMP TMC PART NO.
1/8 HIGH GOTHIC.

MS-3066

REVISIONS

SYM	DESCRIPTION	DATE	E.M.N. NO.	DRAFT	CHKD	APPD
0	ORIGINAL RELEASE FOR PRODUCTION	3-2-64		A.M.		

HOLES —
 A ~ 9/64 DIA. ————— 2 REQ.
 B - .221 MIN., .224 MAX. DIA'S FOR MTG. ————— 4 REQ.
 ITEM 1 (NT-129-8-32-4)



REF-TMC DWG. LD-1174 "C" DETAIL ————— 1 REQ.

REQ'D.	ITEM	PART NUMBER	DESCRIPTION	SYMBOL
4	1	NT-129-8-32-4	NUT, ROUND, SWAGE TYPE	

UNLESS OTHERWISE SPECIFIED:

1. USE MATERIAL THICKNESS FOR MAXIMUM RADIUS ON ALL BENDS.
2. ALL ANGULAR BENDS 90°.
3. REMOVE ALL BURRS AND SHARP EDGES.
4. MOUNT INSERTS AFTER FINISHING.

NOTES

THE CONTENTS OF THIS DRAWING ARE THE EXCLUSIVE PROPERTY OF THE TECHNICAL MATERIEL CORP. ITS UNAUTHORIZED USE OR REPRODUCTION IN WHOLE OR IN PART IS STRICTLY FORBIDDEN.

F. BUDETTI		LIST OF MATERIAL	
MATERIAL .081 THICK, ALUMINUM, 5052 - H-32		THE TECHNICAL MATERIEL CORP. MAMARONECK, NEW YORK	
FINISH S404 IRIDITE		TITLE BRACKET, CONNECTOR MTG.	
UNLESS OTHERWISE SPECIFIED DIMENSIONS ARE IN INCHES AND INCLUDE CHEMICALLY APPLIED OR PLATED FINISHES		DRAWN John C. Biele CHECKED JCB DATE 2/12/64	FINAL APPROVAL Rde DATE 2/12/64
DECIMALS .X ± .05 .XX ± .01 .XXX ± .005	FRACTIONS ± 1/64 ANGLES ± 0° 30'	MS-3066 0	SHEET REV. LTR.